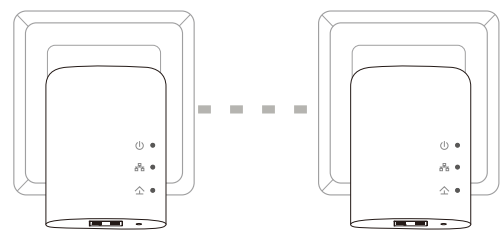


Quick Install Guide

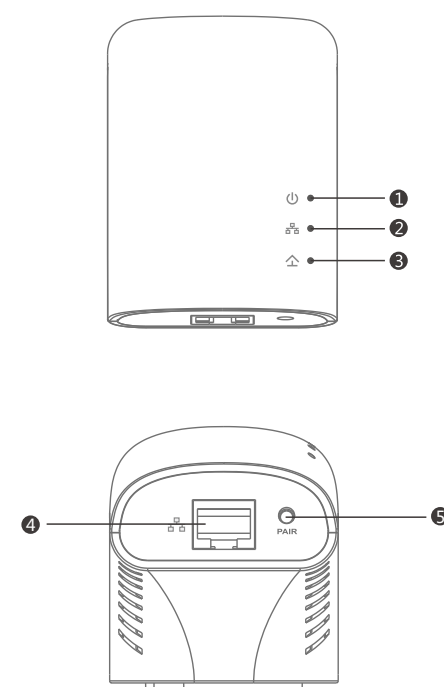
PowerLine Network Kit



Thank you for purchasing the PowerLine Network Kit. Follow the easy steps in this guide to properly set up your PowerLine adapters. Please verify that all of the package contents listed below are available.

REV.1

Hardware Overview



1	Power LED	<ul style="list-style-type: none"> • ON: The device is receiving electrical power. • Fast Flashing: The device is creating/joining private network • Slow Flashing: The device is power saving mode. • Off: The device is not receiving electrical power.
2	Ethernet LED	<ul style="list-style-type: none"> • ON: The Ethernet port is linked. • Off: There is no Ethernet connection. • Flashing: Transferring data to/from a network device
3	PowerLine LED	<ul style="list-style-type: none"> • ON: The device is connected to a Powerline network. The color indicates the Powerline link rate: • Green: The Powerline link rate is best. • Yellow: The Powerline link rate is better. • Red: The Powerline link rate is good. • Off: The device has not detected or is in power saving mode.
4	10/100 Ethernet Port	Connect to an Ethernet device such as a router, computer, gaming console, network storage device, or a media player.
5	PAIR Button Reset Button	Press and hold the button for 1-3 seconds to secure your network or hold the button for 10-12 seconds to reset to the factory default settings.

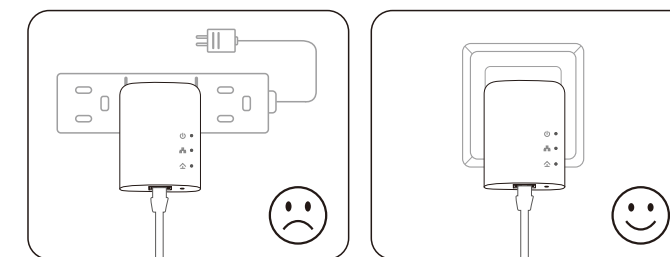
Package Contents

2 x Powerline Adapter
2 x RJ-45 Ethernet Cable
1 x Quick Installation Guide

If any of the above items are missing, please contact your reseller.

Installation

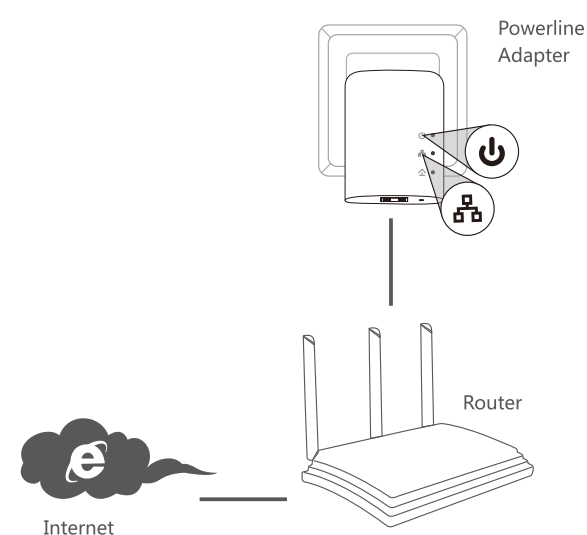
Warning Before Installation



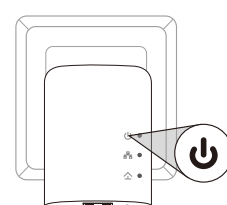
Recommendations

- For best results, use in a regular wall outlet without any other devices plugged in. Plugging into a power strip or a surge protector may adversely affect the performance of this product.
- Avoid using the PowerLine adapters in an electrical outlet that is located near an appliance that uses a lot of power, such as a washer or dryer, refrigerator, microwave, hair dryer, or air conditioning unit.
- To verify connectivity or if you are having connection problems, plug the adapters in the same room to verify whether your home's electrical wiring is contributing to the issue. The adapters' PowerLine LED indicators will illuminate if the connection is established. Once configured you may place the adapter in the location of your choice.

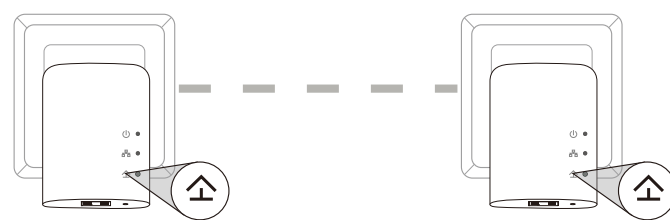
- 1** Plug in one of the PowerLine adapters and connect to your router with an Ethernet cable. The Power and Ethernet LEDs should both light up.



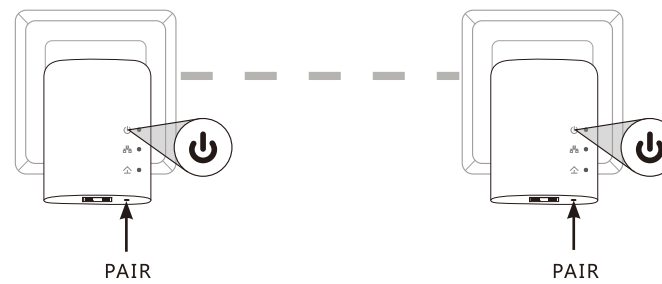
- 2** Plug in the other Powerline Adapter in the room that you want to extend your network. The Power LED will turn on.



- 3** Verify that the PowerLine LEDs on both adapters are lit. If they are, the adapters are connected. If not, try another outlet (closer to the other PowerLine adapter).

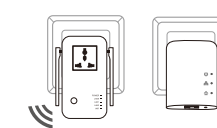


- 4** To secure your network, press the **PAIR** button for 2 seconds on one of the adapters. The Power LED will start to blink. Then, within 2 minutes, press the **PAIR** button on the other adapter for 2 seconds. Once the Power LEDs stop blinking, verify that the PowerLine LED is lit on both adapters (as in Step 3). This indicates that your adapters are properly connected to each other.

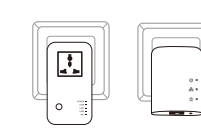


- 5** You can now connect another device using an Ethernet cable to the Powerline Adapter adapter. Verify that the Ethernet LED is lit. Your installation is completed.

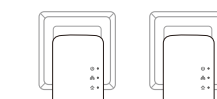
Relative Products



PowerLine AV500 Wireless Kit



PowerLine AV500 Network Kit



PowerLine AV500 PowerLine Network



PowerLine AV200 Network Kit



PowerLine AV200 Network Kit