

# NEXTECH



## DUAL 2.5"/3.5" SATA HDD Docking Station XC4689 User Manual

Distributed by:  
TechBrands by Electus Distribution Pty. Ltd.  
320 Victoria Rd, Rydalmere  
NSW 2116 Australia

Ph: 1300 738 555  
Int'l: +61 2 8832 3200  
Fax: 1300 738 500

www.techbrands.com

Made in China

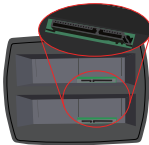
### 1. CONTENT

- 2.5" HDD Enclosure
- USB 3.0 cable
- Mounting screws and driver
- PU Leather pouch
- User Manual

### 3. CONNECTING HDD



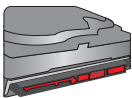
ENIYOU-602U3



Locate the connector on the cap



Be careful with the connector pins, watch the position when connecting the HDD



Locate the HDD's pins



Connect the HDD in to the SATA connector



Connect the DC adaptor into the case and case and connect the other cable side in the wall outlet



Locate the USB port that you will use and connect the USB cable



Connect the other side of the USB cable in the HDD case



Slide the power button to turn it on

### 4. Offline cloning

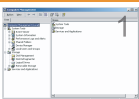


Plug in the power cord

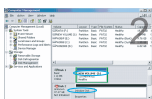


Press the CLONE button twice to clone

### 5. Partition and Format



Right click on "My Computer" icon and select "Manager". When this window appears, select "Disk Management".



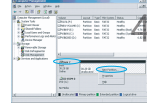
Right click on the disk on "New Volume" and select "Initialize Disk".

### 2.OS Support

Windows 2000/ Me/ XP / Vista/ 7/ 8/ 8.1/10 and above,  
Mac OS 9.1/10 and above



Select the new disk to start with the configuration.



When new disk appears, right click on it and select "New partition".



When the wizard window appears, click on [Next].



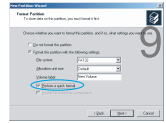
Select "Primary Partition" and click on [Next]



Select the partition size we recommend to use as maximum and click on [Next].



Select the drive letter to a sign the hard disk and click on [Next].



Select the format settings: "FAT 32", "DEFAULT" and Volume Label (Select the features that you need to format: "FAT32", "Predefined", the CD label that you need (example: "New Volume") and "Perform a quick format".



New partition is complete and your hard disk is ready to be used. Click on [Finish].

### 6. Product Specifications

Supported Devices	Supports standard 2.5/3.5 inch SATA/III HDDs and SSDs
External Interface	USB 3.0
Maximum Data Transfer Rate	USB 3.0 (MAX 5Gbps) / USB 2.0 (MAX 480Mbps)
OS Support	Windows 2000/ Me/ XP /Vista/ 7/ 8/ 8.1/10 above, Mac OS 9.1/10, above
Power	12V power adaptor
Plug and play	Support
Material	ABS Material
Package Contents	SATA Docking Station, USB 3.0 Cable, User Manual, 12V power Supply
Please Note	HDD is not included

Clone button  
HDD2 light  
HDD1 light  
Clone light  
Power light

HDDs and SSDs  
12V DC IN  
USB 3.0 Interface  
Power

LED2 LED1	Clone light	Cloning progress
1 light	1 light	0%~25%
1, 2 lights	1, 2 lights	25%~50%
1, 2, 3 lights	1, 2, 3 lights	50%~75%
1, 2, 3, 4 lights	1, 2, 3, 4 lights	75%~100%