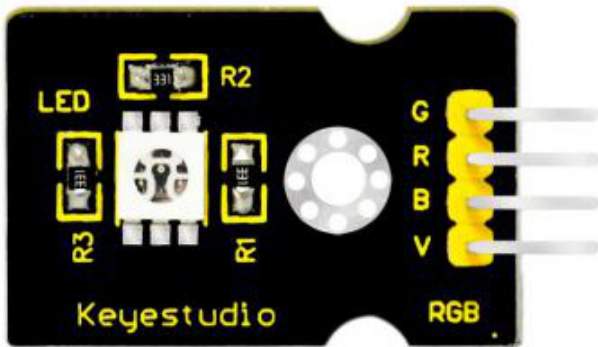


RGB LED Module

XC4428 Datasheet

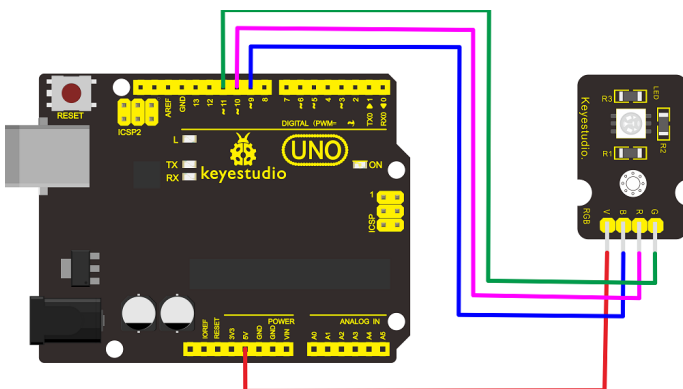


This is a full-color LED module, which contains 3 basic colours, red, green and blue. They can be seen as separate LED lights. After programming, you can turn them on and off by sequence or can also use PWM analog output to mix three colors to generate different colors.

Specification

Color: Red, green and blue
Brightness: High
Voltage: 5V
Input: Digital level

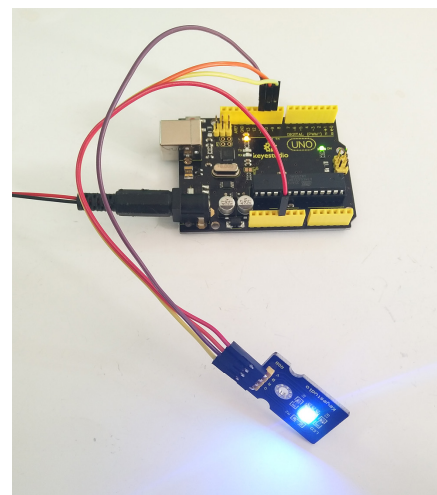
Connection Diagram



Sample Code

```
int redpin = 10; //select the pin for the red LED
int bluepin =9; // select the pin for the blue LED
int greenpin =11;// select the pin for the green LED
int val;
void setup() {
  pinMode(redpin, OUTPUT);
  pinMode(bluepin, OUTPUT);
  pinMode(greenpin, OUTPUT);
}
void loop()
{for(val=255; val>0; val--)
  {analogWrite(11, val);
  analogWrite(10, 255-val);
  analogWrite(9, 128-val);
  delay(1);
}
for(val=0; val<255; val++)
  {analogWrite(11, val);
  analogWrite(10, 255-val);
  analogWrite(9, 128-val);
  delay(1);
}
}
```

Result



Done uploading the code, you should see the RGB LED flashing with different colors.

Video

