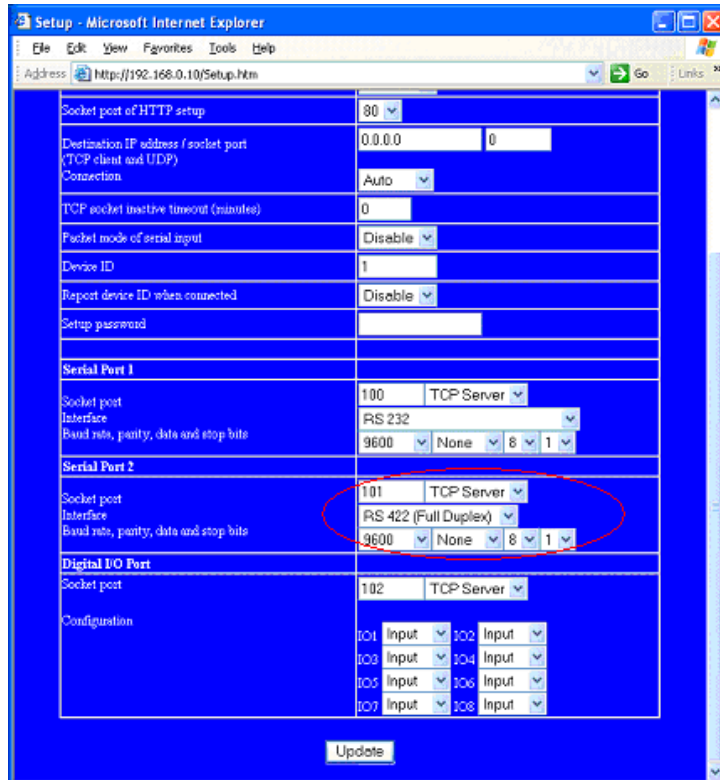
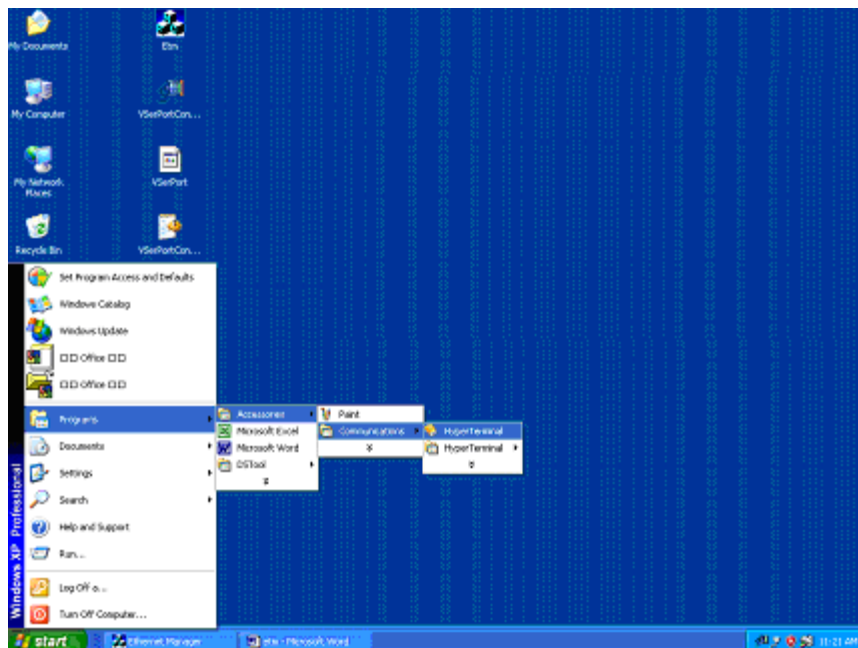


# RS-422 Loop Test

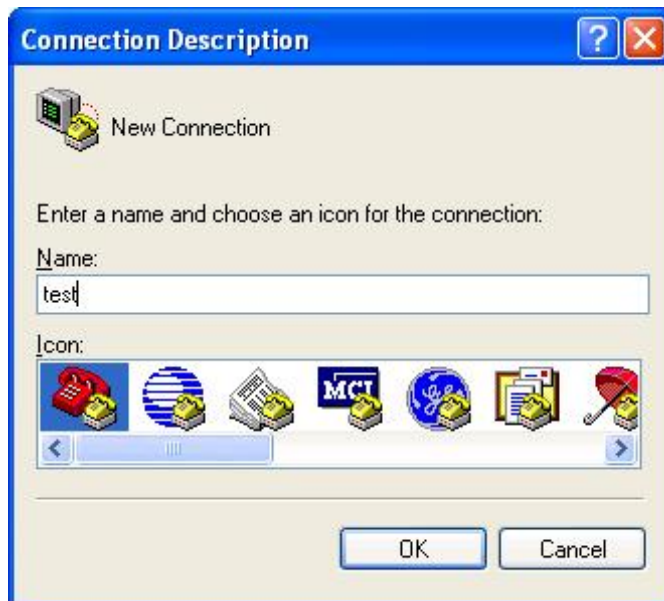
1. Select RS422 port option.



2. Open a Hyper Terminal file.



3. Name the Hyper Terminal . ( Example : test )
4. Select “ OK” button of Connection Description.



5. Press OK button of connect To .



6. Select TCP / IP item in connect using .



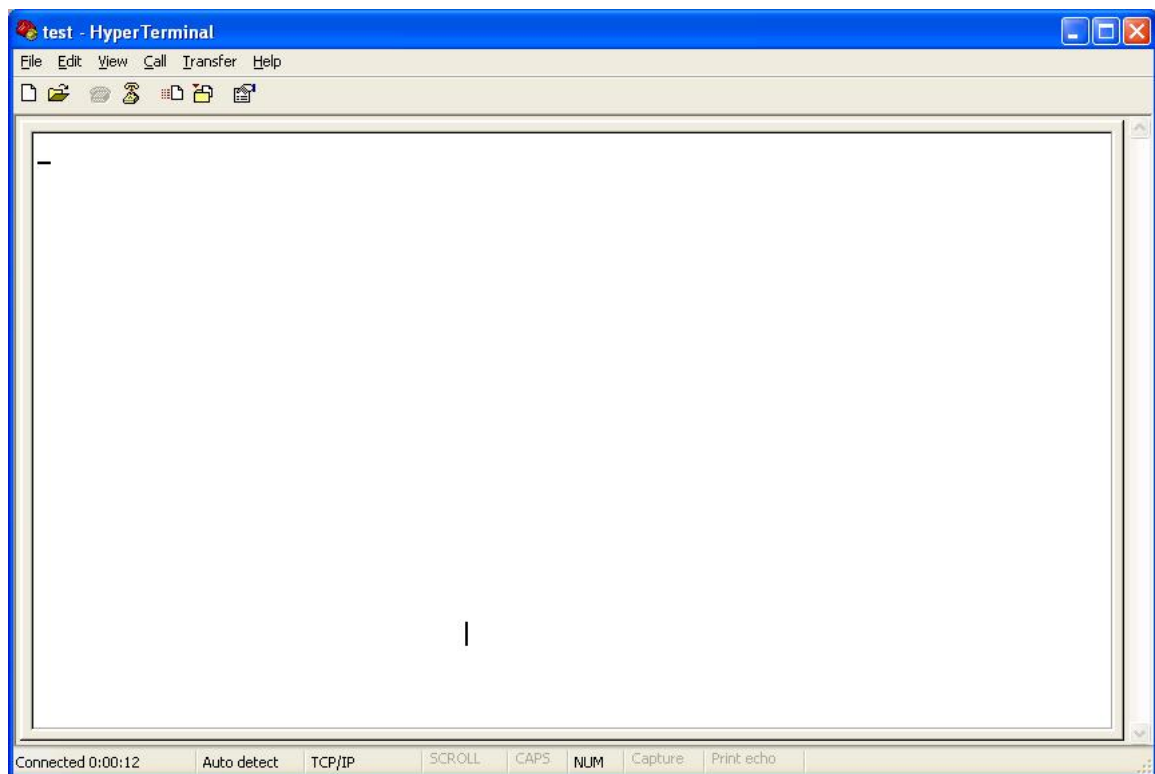
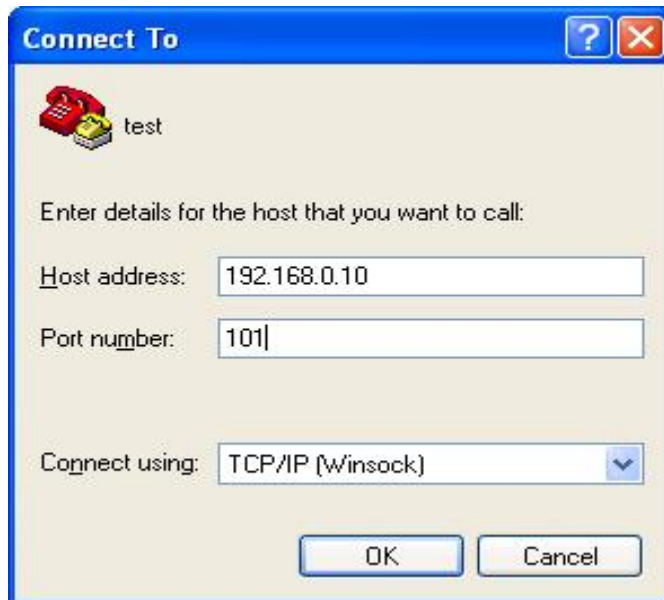
The 'Connect To' dialog box has a blue title bar with a question mark and a close button. Below the title bar is a red telephone icon and the text 'test'. The main area contains the instruction 'Enter details for the phone number that you want to dial:'. There are four input fields: 'Country/region:' with a dropdown menu showing 'United States (1)', 'Area code:' with a text box containing '446', 'Phone number:' with an empty text box, and 'Connect using:' with a dropdown menu. The dropdown menu is open, showing a list of options: 'COM1', 'COM2', 'COM3', and 'TCP/IP (Winsock)', with 'TCP/IP (Winsock)' selected and highlighted in blue.

7. Press OK button of Connect To screen.



The 'Connect To' dialog box has a blue title bar with a question mark and a close button. Below the title bar is a red telephone icon and the text 'test'. The main area contains the instruction 'Enter details for the host that you want to call:'. There are three input fields: 'Host address:' with an empty text box, 'Port number:' with a text box containing '23', and 'Connect using:' with a dropdown menu showing 'TCP/IP (Winsock)'. At the bottom of the dialog box are two buttons: 'OK' and 'Cancel'.

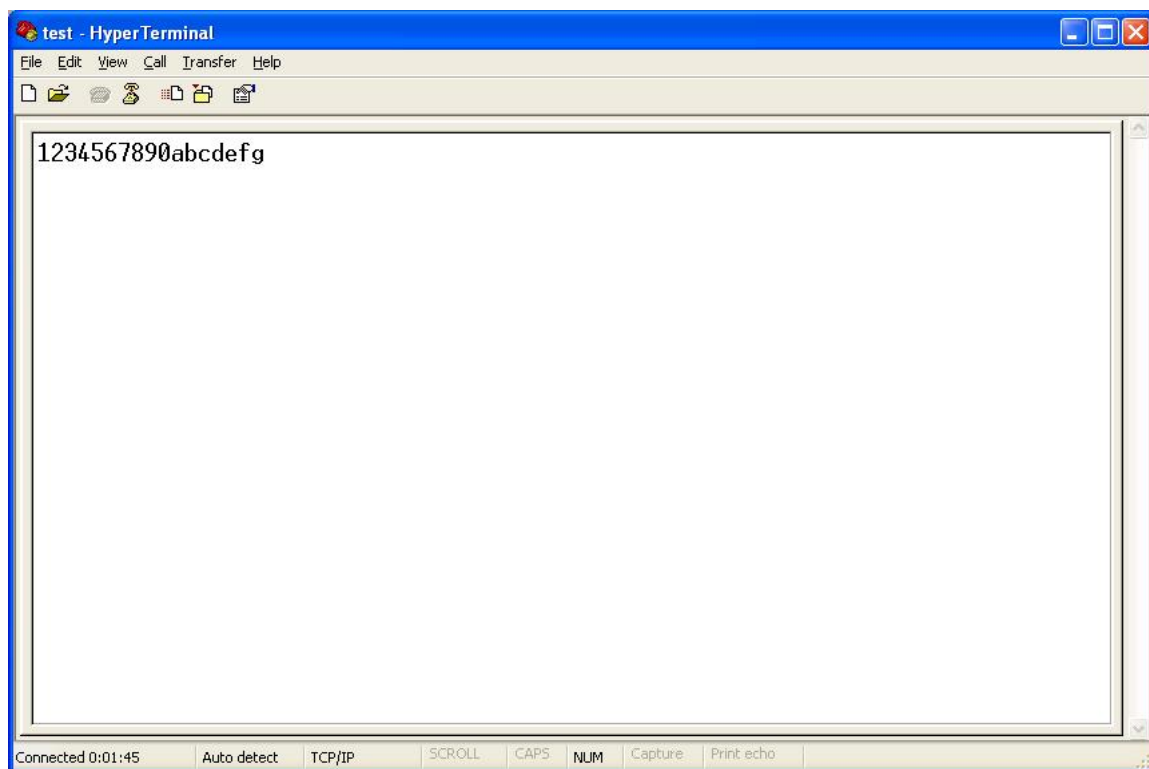
8. Fill converter's IP address and socket data in Host address and Port number items in Connect To.
9. Press OK button of Connect To.



10. Short T+ & R+/T- & R- of RS422 connector of converter.



11. You type any characters on Hyper Terminal of PC for test.



**If you don't get response characters from Hyper Terminal, please check step 1 to 11 again.**