

RS-232 Loop Test

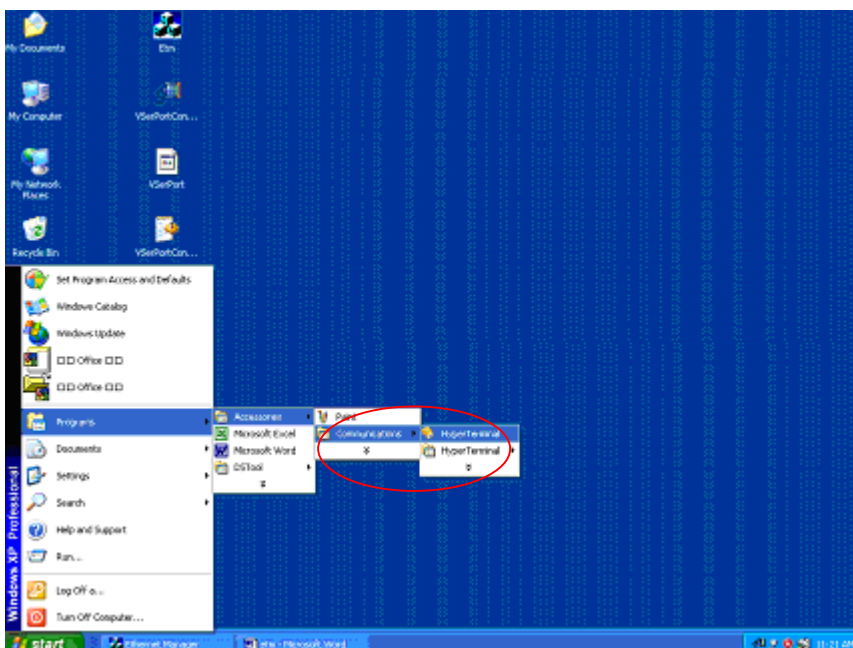
1. Select RS232 port option.

Controller Setup

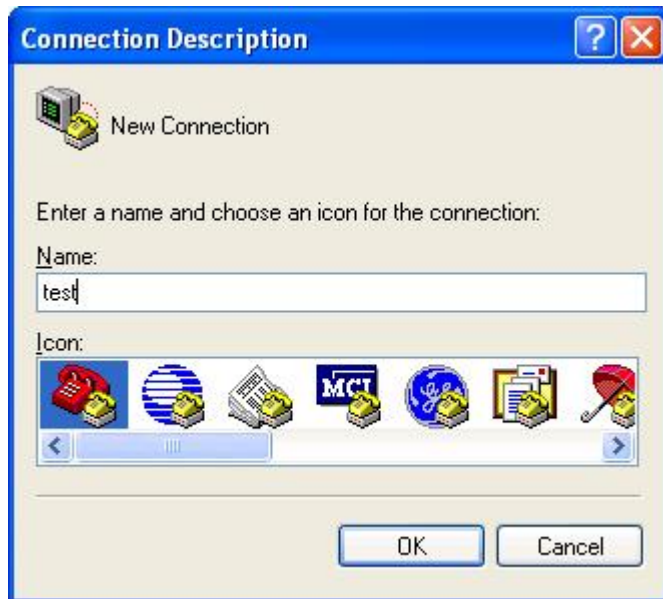
IP address	192.168.0.10	
Subnet mask	255.255.0.0	
Gateway address	0.0.0.0	
Network link speed	Auto	
DHCP client	Disable	
Socket port of HTTP setup	80	
Socket port of serial I/O	100	TCP Server
Socket port of digital I/O	101	Disabled
Destination IP address / socket port (TCP client and UDP) Connection	0.0.0.0	0
TCP socket inactive timeout (minutes)	10	
Serial I/O settings (baud rate, parity, data bits, stop bits)	9600 N 8 1	
Interface of serial I/O	RS 232	
Packet mode of serial input	Disable	
Device ID	1	
Report device ID when connected	Disable	
Setup password		

Update

2. Open a Hyper Terminal file.



3. Name the Hyper Terminal . (Example : test)
4. Select “ OK” button of Connection Description.



5. Press OK button of connect To.

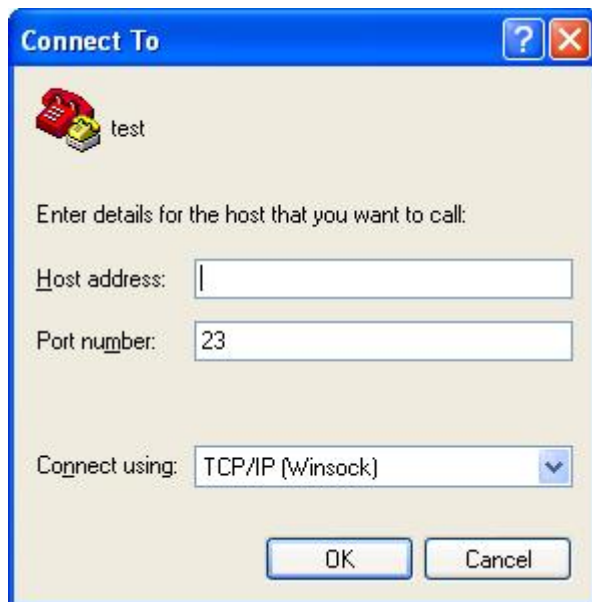


6. Select "TCP / IP" item in connect using of Connect To.



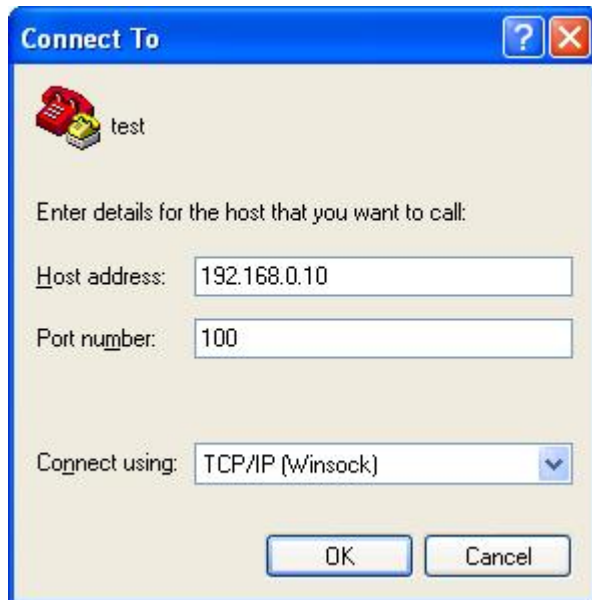
The screenshot shows the 'Connect To' dialog box. At the top, there is a red telephone icon and the text 'test'. Below this, it says 'Enter details for the phone number that you want to dial:'. There are three input fields: 'Country/region:' with a dropdown menu showing 'United States (1)', 'Area code:' with the value '446', and 'Phone number:' which is empty. Below these is a 'Connect using:' dropdown menu. This menu is open, showing a list of options: 'COM1', 'COM2', 'COM3', and 'TCP/IP (Winsock)'. The 'TCP/IP (Winsock)' option is highlighted in blue. The dialog box has a blue title bar with the text 'Connect To' and standard Windows window controls (minimize, maximize, close).

7. Press "OK" button of Connect To.

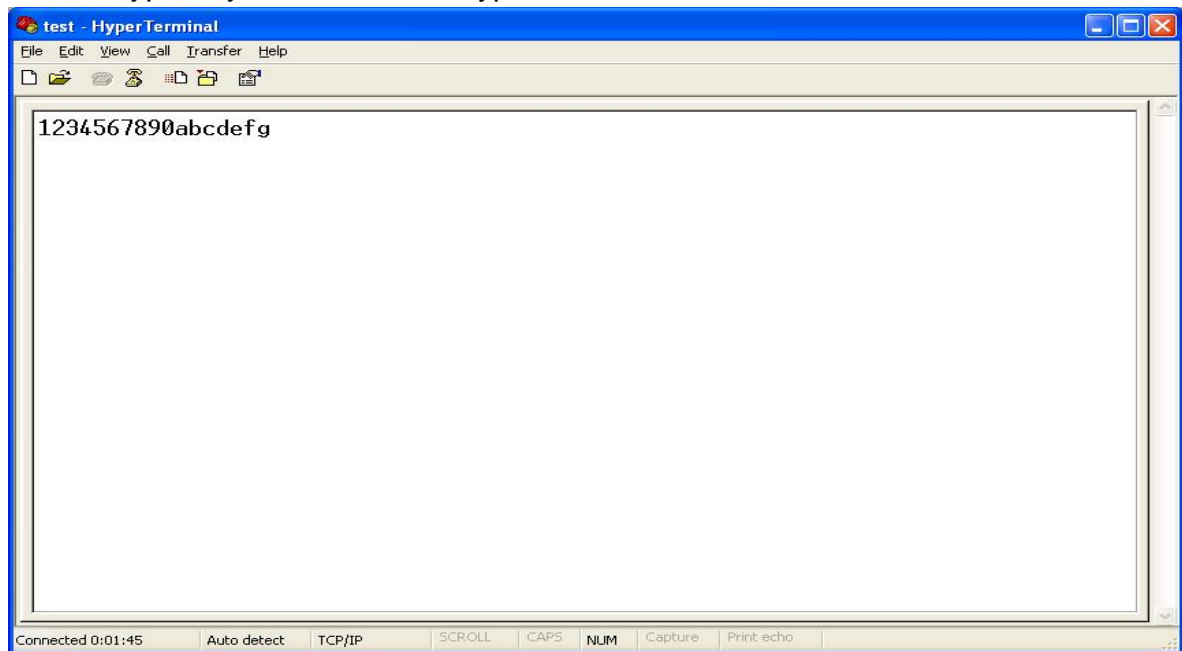


The screenshot shows the 'Connect To' dialog box. At the top, there is a red telephone icon and the text 'test'. Below this, it says 'Enter details for the host that you want to call:'. There are three input fields: 'Host address:' which is empty, 'Port number:' with the value '23', and 'Connect using:' with a dropdown menu showing 'TCP/IP (Winsock)'. The 'OK' and 'Cancel' buttons are visible at the bottom of the dialog box. The dialog box has a blue title bar with the text 'Connect To' and standard Windows window controls (minimize, maximize, close).

8. Fill converter's IP address and socket data in Host address and Port number in Connect To.
9. Press OK button of Connect To screen.



10. Please short pin 2 & pin 3 of DB9 connector of converter.
11. You type any characters on Hyper Terminal of PC for test.



If you don't get response words from hyper terminal, please check step 1 to 11 again.