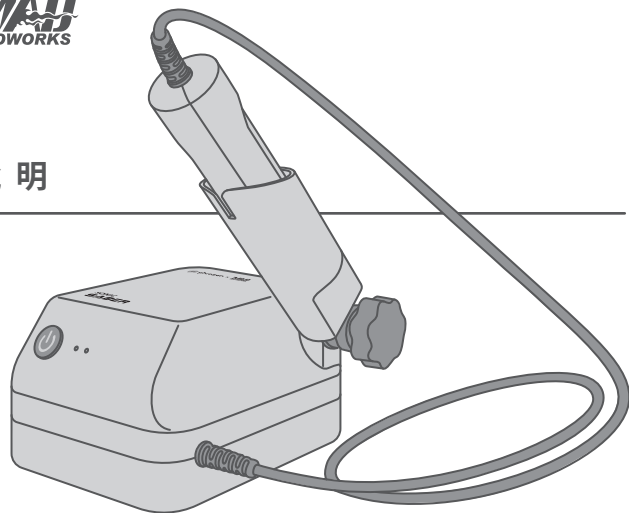


超音波刀使用說明

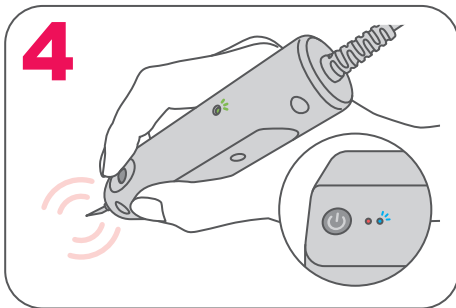
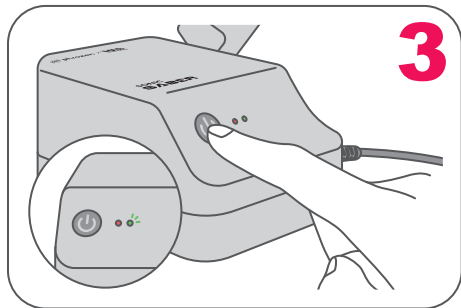
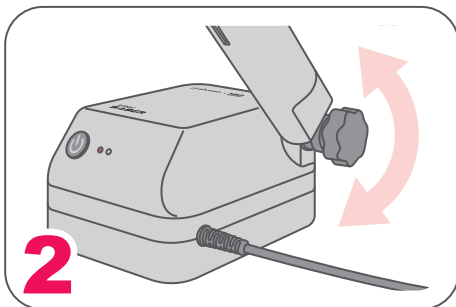
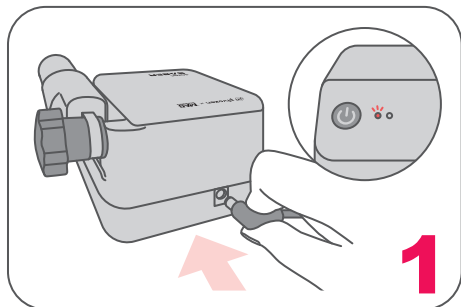
SONIC SABER

產品規格

電壓 DC 12V 3A



01 使用步驟



02 操作介紹

電源燈

機台連接電源後
將會亮紅燈。

電源鍵



狀態指示燈

- 綠燈 | 機台正常運轉。
- 藍燈 | 超音波刀使用中。
- 橘燈 | 機台過熱、刀具連續使用超過5分鐘、系統錯誤。
* 請長按電源鍵2秒關閉電源。

轉軸

轉動轉軸可調整刀具
擺放角度。

使用狀態燈

超音波刀使用中亮燈。

超音波開關

使用時，須按壓開關
進行切割。若持續按
壓超過5分鐘，將自
動停止運作。

刀片

使用時請小心，避免
割傷。

注意 ⚠ 事項

- | 使用產品時，請保持手部乾燥。
- | 使用產品時，需配戴防割手套。
- | 請勿將產品暴露在任何類型的液體中。
產品遇水立即停止使用。
- | 請勿使用本產品切割油紙等易燃物品。
- | 請勿將刀片指向他人。
- | 使用產品時請遠離兒童。
- | 請勿使用本產品切割金屬或玻璃。
- | 產品使用中及使用後請勿直接觸摸刀片；
高溫會導致灼傷。
- | 高壓電注意，非專業維修人員請勿自行拆
卸產品，以免誤觸產生危險。

保養方式 如需外觀清潔請用酒精擦拭，請勿用油性或腐蝕性的液體擦拭。



聯繫客服



台灣社團



普羅森
Youtube



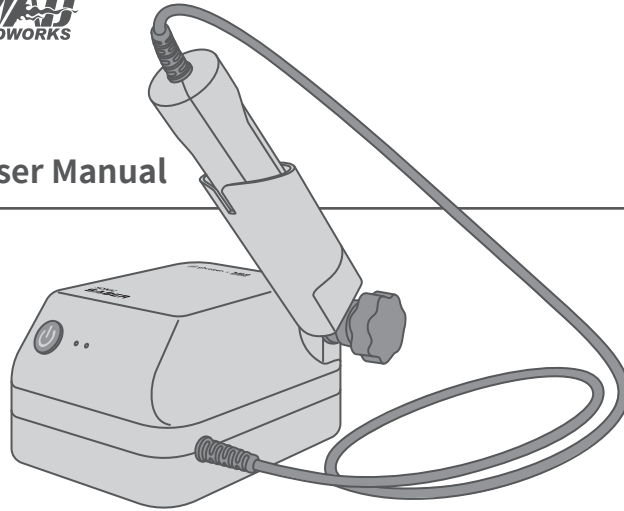
MADWORKS
Youtube

Ultrasonic Cutter User Manual

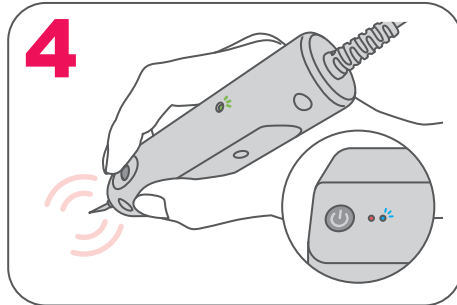
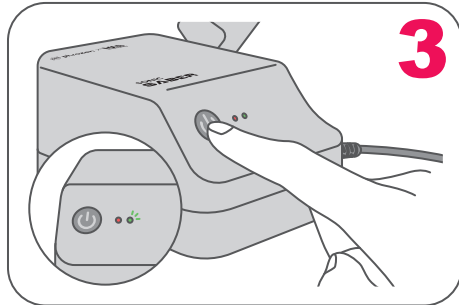
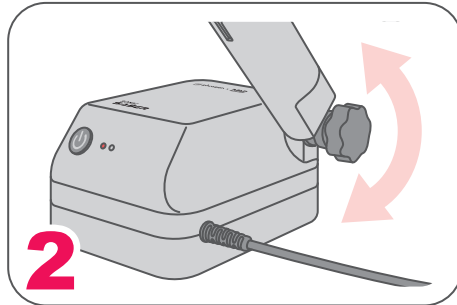
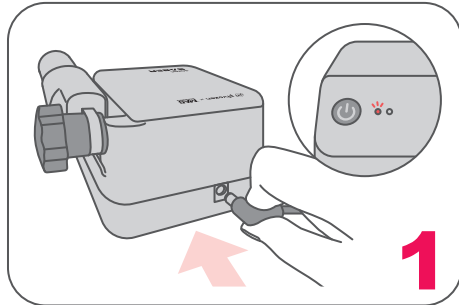
SONIC SABER

Product Specifications

Voltage DC 12V 3A



01 Step-by-Step Instructions



02 Operating Manual

Power Light

After the power is plugged in, the Power Light will light up automatically.

Power Button

Machine Status Indicator Light

- Green Light | Machine is working properly.
 - Blue Light | Ultrasonic knife is in use.
 - Orange Light | Machine has overheated as it has been in use for more than 5 min. System Error.
- * To turn off the power button, please long press for 2 seconds.

Shaft

Rotate the shaft to adjust the angle of the Ultrasonic Knife.

Machine Status

When the tool is in use, the blue indicator light will light up.

Ultrasonic Switch

When in use, this button must be held down. If pressed for more than 5 min, the tool will stop working automatically.

Ultrasonic Blade

Please use carefully to avoid cutting and/or hurting yourself.

⚠ Key Notes Before You Start

- | Please DO NOT touch the product with wet hands.
- | Please wear cut-resistant gloves when handling the product.
- | DO NOT expose the machine to liquids of any kind.
- | If The device is exposed to water, discontinue use immediately.
- | Please do not use this product to cut oil paper and/or any other flammable objects.
- | DO NOT point the Ultrasonic Knife at others.
- | Keep away from children.
- | Please DO NOT use this product to cut metal or glass.
- | DO NOT touch the blade immediately before or after use as high temperatures can cause burns.
- | Danger - High Voltage! Non-professional personnel should avoid disassembling the product on their own to prevent injury from accidental touch.

Maintenance : Please use sanitizing alcohol to clean the exterior of the device. Do not use any oily or corrosive liquids to clean the device.



Customer Service



Facebook



Youtube



Instagram