

protech

# 30W 12VDC Soldering Iron with Cigarette Plug

HOBBYIST



## User Manual

TS1536

## GENERAL INFORMATION & SAFETY INSTRUCTIONS

### ATTENTION

- On first time use the soldering iron may produce smoke, this is just grease used in manufacturing burning off.
- It is normal and should only last for approx. 10 minutes. It is not harmful to the product or user.

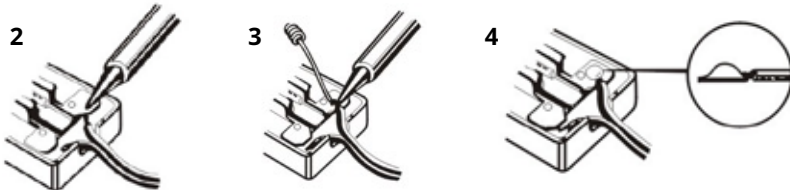
### WARNING

- The appliance is not a toy, and must be kept out of children's hands.
- Before cleaning the appliance or changing the filter, always remove the power lead plug from the socket. Unscrewing the housing is not permitted.
- This appliance is not intended for use by persons (including children) with reduced physical, sensory or mental capabilities, or lack of experience and knowledge, unless they have been given supervision or instruction concerning use of the appliance by a person responsible for their safety.
- Children should be supervised to ensure that they do not play with the appliance.
- If the supply cord is damaged, it must be replaced by the manufacturer, its service agent or similarly qualified persons in order to avoid a hazard.

**WARNING: The manufacturer is not responsible for any potential injury from misuse**

## USAGE INSTRUCTIONS

1. Clear any dirt, rust or paint on the part you wish to solder.
2. Heat the part with the soldering iron.
3. Apply rosin-based solder to the part and melt it with the soldering iron.
4. Wait for the solder to cool and hardened before moving the soldered part.



**NOTE: when using non-rosin-based solder, be sure to apply a soldering paste to the part before applying the solder.**

## MAINTENANCE & CARE

### CARE OF TIP

- Always keep tips tinned to ensure a long service life.
- Do not keep the iron at high temperature for a long time.
- Never clean the tip with coarse materials.
- Never cool in water.
- Remove the tip and clean every twenty hours of use, or at least once a week, and remove any loose build up in the barrel.
- Do not use fluxes containing chloride or acid. Use only rosin or activated resin fluxes.
- Do not use any compound or anti-seize materials.
- Handle the heated soldering iron with extreme care, as the high temperature of the iron can cause fires or painful burns.
- Never file the specially-plated tip.

### MAINTENANCE

- This tool must be placed on its stand when not in use.
- If the supply cord is damaged, it must be replaced by the manufacturer or its service agent or a similarly qualified person in order to avoid hazard.

### TIP REPLACEMENT

After removing tip, remove any oxide dust that may have formed in the tip retaining area of the barrel. Be careful to avoid getting dust in your eyes. Care should be taken not to over tighten as this would damage the element.

**NOTE: Tip replacement or cleaning should be done only when the iron is at room temperature or below.**

### GENERAL CLEANING

The outer case of the iron or station may be cleaned with a damp cloth using small amounts of liquid detergent. Never submerge the unit in liquid or allow any liquid to enter the housing. Never use solvent to clean the case.

## WARRANTY

Our product is guaranteed to be free from quality and manufacturing defects for a period of 12 Months.

If your product becomes defective during this period, Electus Distribution will repair, replace, or refund where a product is faulty; or not fit for intended purpose.

This warranty will not cover modified product; misuse or abuse of the product contrary to user instructions or packaging label; change of mind and normal wear and tear.

Our goods come with guarantees that cannot be excluded under the Australian Consumer Law. You are entitled to a replacement or refund for a major failure and for compensation for any other reasonably foreseeable loss or damage. You are also entitled to have the goods repaired or replaced if the goods fail to be of acceptable quality and failure does not amount to a major failure.

To claim warranty, please contact the place of purchase. You will need to show receipt or other proof of purchase. Additional information may be required to process your claim. Should you not be able to provide proof of purchase with a receipt or bank statement, identification showing name, address and signature may be required to process your claim.

Any expenses relating to the return of your product to the store will normally have to be paid by you.

The benefits to the customer given by this warranty are in addition to other rights and remedies of the Australian Consumer Law in relation to the goods or services to which this warranty relates.

Distributed by:  
Electus Distribution Pty Ltd  
46 Eastern Creek Dr,  
Eastern Creek NSW 2766 Australia  
Ph 1300 738 555

[www.electusdistribution.com.au](http://www.electusdistribution.com.au)