

protech

# Rechargeable Air Brush

HOBBYIST



## User Manual

TL4590

## Technical Data

<b>PRODUCT NAME:</b>	<b>Rechargeable Air Brush</b>
<b>PRODUCT CODE:</b>	<b>TL4590</b>
<b>POWER:</b>	<b>Lithium Battery 3.7V 1200mAh</b>
<b>MAX OUTPUT:</b>	<b>7 mL/min</b>
<b>CUP CAPACITY:</b>	<b>5CC/20CC</b>
<b>CHARGING TIME:</b>	<b>Up to 4 hours</b>
<b>USING TIME:</b>	<b>Up to 45 minutes</b>
<b>NOZZLE DIAMETER:</b>	<b>0.5mm</b>
<b>MAX PRESSURE:</b>	<b>18-25PSI</b>

## How to use



- Step 1:** Check the product & USB cable, make sure no damage after taking out from package.
- Step 2:** Use USB cable and 5V 2A adapter to charge the cordless compressor. It takes about 2-3.5 hours to fully charged.
- Step 3:** When the red light turns to green, it means the power is fully charged. Then you can remove the USB.
- Step 4:** Fill fluid in the cup after thinning appropriately, this product is suitable to spray water-like liquids with a viscosity below 2000mpa.s., otherwise the airbrush is easy blocked.
- Step 5:** Turn on the ON/OFF button of cordless compressor.
- Step 6:** For single action airbrush, draw the operation lever of airbrush gun backward gradually to spray.

# Cleaning and Maintenance

## A: Cleaning step

### Step 1:



Empty any remaining airbrush coloring from the cup.

### Step 2:



Using the dropper, add hot water or alcohol to the cup to clean.

### Step 3:



Thoroughly swab the cup clean with a cotton swab. Add more water and repeat if necessary.

### Step 4:

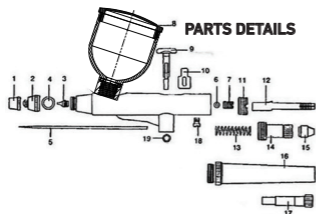
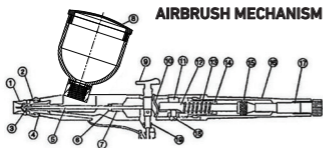


Spray water or alcohol through the airbrush onto a towel until it sprays clear. Discard any leftover water and dry it off.

## B: Maintenance

- Empty the fluid cup and wash with water or solvent by a brush.
- Refill up with water or solvent, then block the needle cover with a finger and spray. The air flows backward into nozzle to clean the paints remained.

# Common Faults and Solutions



## Parts Name

1. Needle Cap
2. Nozzle cap
3. Nozzle
4. O-Ring for Nozzle Cap
5. Needle
6. O-Ring for Needle Guide
7. Nozzle Guide
8. Lid for Color Cup
9. Operation Lever
10. Lever Guide
11. Stopper
12. Needle Chuking Guide
13. Spring
14. Spring Case
15. Needle Chuking Nut
16. Standdard-Handle Adjusting
17. Adjusting Screw
18. Guide Screw
19. Lever Guide O-Ring

Commom fault	Analysis	Solution
When plugged in, power light is off, air pump has no airflow	Bad button bad plug	Contact seller
The power light is on, and the air pump has no airflow	Internal damage	Contact seller
Airbrush with air flow but no mist	Blockage	Clean the needle and gun
	The needle (NO.5) is stuck	Pull out the needle and reassemble it
	The nut is not tightened	Tighten the nut (No. 15)

## Warning

- The compressor should be used in a clean, dry and ventilated area.
- Please do not wash the machine body under water.
- Keep out of reach of children.
- The compressor's ambient temperature should be 0-40°C. Do not put in direct sunlight.
- Please do not disassemble or modify this product by yourself to avoid failure.
- Please avoid dropping or hitting the product to avoid malfunction.
- Use the device for the purpose it was developed for only and in the manner specified in these instructions for use. Any form of improper use can be dangerous. The manufacturer is not liable for damage resulting from improper or incorrect use.

## Environment Friendly Disposal

- You can help protect the environment!
- Please remember to respect the local regulations: hand in the non-working electrical equipment to an appropriate waste disposal center.

# Warranty

Our product is guaranteed to be free from quality and manufacturing defects for a period of 12 Months.

If your product becomes defective during this period, Electus Distribution will repair, replace, or refund where a product is faulty; or not fit for intended purpose.

This warranty will not cover modified product; misuse or abuse of the product contrary to user instructions or packaging label; change of mind and normal wear and tear.

Our goods come with guarantees that cannot be excluded under the Australian Consumer Law. You are entitled to a replacement or refund for a major failure and for compensation for any other reasonably foreseeable loss or damage. You are also entitled to have the goods repaired or replaced if the goods fail to be of acceptable quality and failure does not amount to a major failure.

To claim warranty, please contact the place of purchase. You will need to show receipt or other proof of purchase. Additional information may be required to process your claim. Should you not be able to provide proof of purchase with a receipt or bank statement, identification showing name, address and signature may be required to process your claim.

Any expenses relating to the return of your product to the store will normally have to be paid by you.

The benefits to the customer given by this warranty are in addition to other rights and remedies of the Australian Consumer Law in relation to the goods or services to which this warranty relates.

This warranty is provided by:

Electus Distribution

46 Eastern Creek Drive, Eastern Creek NSW 2766

Ph. 1300 738 555