

Parts in Package



USB cable



PCL filament



3D pen



user manual

Warning

1. This equipment is suitable for children over 6 years old and adult.
2. It is strictly prohibited to input any other material into the filament hole.
3. It is prohibited to use filaments provided by other companies.
4. Keep the pen away from water.

Specification and Parameters

1. Molding speed: 2 levels adjustable
2. Temperature: 2 levels adjustable
3. Printing material: PCL
4. Electric parameter: DC5V 1A 5W
5. Power supplier: Built-in rechargeable battery, computer USB port or AC/DC adapter with output 5V,1A or above.
6. Nozzle diameter: 0.9mm
7. Filament diameter: 1.75mm
8. Equipment dimension: 142mm×29mm×26mm
9. Equipment Net weight: 46g

Filament Cut



correct



wrong



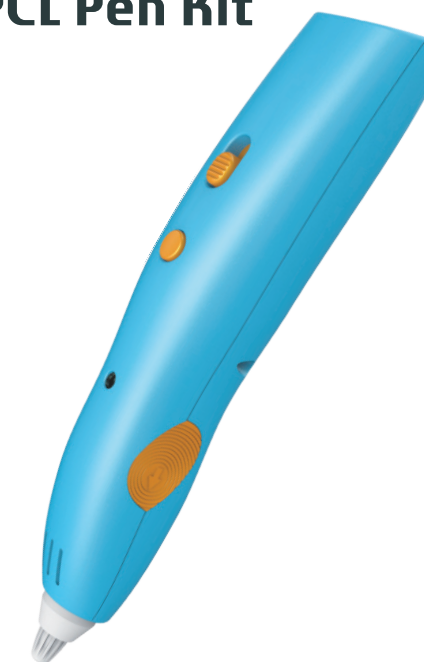
wrong

Distributed by:
Electus Distribution Pty. Ltd.
320 Victoria Rd, Rydalmere
NSW 2116 Australia

www.electusdistribution.com.au

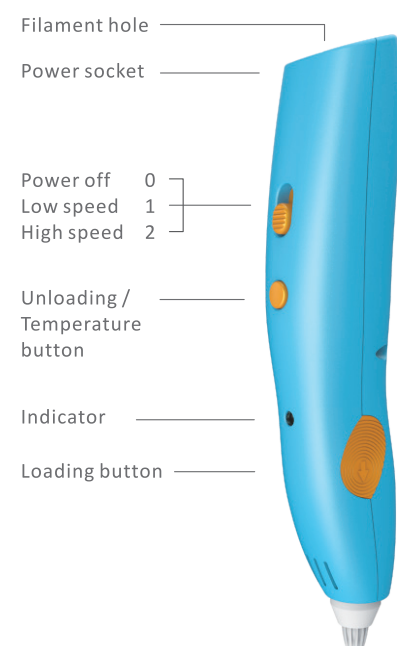
Made in China

duinotech Low Temperature PCL Pen Kit



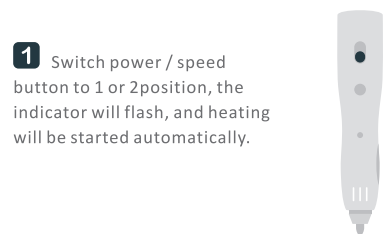
User Manual
TL4580

Function

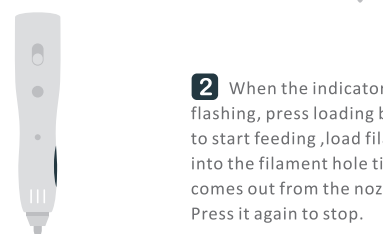


Operating Instructions

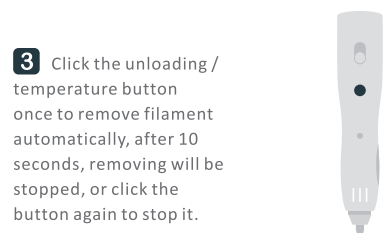
1 Switch power / speed button to 1 or 2 position, the indicator will flash, and heating will be started automatically.



2 When the indicator stops flashing, press loading button to start feeding, load filament into the filament hole till it comes out from the nozzle. Press it again to stop.



3 Click the unloading / temperature button once to remove filament automatically, after 10 seconds, removing will be stopped, or click the button again to stop it.



4 Switch the power / speed button to 0 position to power off the pen, filament will be removed automatically after powered off.



Note: after 5 minutes without operation, it will be powered off automatically.

5 When the indicator flashes fast, recharge it (Use the USB cable with any AC / DC adapter with an output of 5V, 1A or above, or computer USB port).



Note: Under powered off mode, the indicator will be in red consistently during recharging, and it will turn green after fully charged; Under powered on mode, the indicator will flash fast for three times to remind that recharging has started after plug the USB cable, after then the light will indicate the working status again.

Note

1. Heating time may be affected by environmental temperature.
2. The filament end should be cut correctly before loading.
3. It is advised to unload the filament when drawing is finished.