

POWERTECH

SZ1940

8 Way Switch Panel with Voltage Protection 60A Kit



Instruction Manual

WHAT'S INCLUDED

A Switch Panel



B Circuit Control Box



C Mounting Brackets



D Power Harness, Connections



E Circuit Breaker Protector



F 80pcs Labels(Decals)



PRODUCT FEATURES

- Manage up to eight auxiliary LED lights or electrical devices.
- 7-color LED ambient lighting
- Lighting control: Press and hold for 3 seconds to change the colour of the backlight.
- Automatic brightness adjustment of the backlight
- ON/OFF switch for single-button operation
- There are 80 customisable labels included.
- DC 12V~24V | 600W - 1200W
- 60A resettable circuit breaker

SWITCH PANEL INDICATION

① Orange LED lights up to show the circuit is on

② RGB LED illumination area, back light

③ Integrated sensor circuit
Backlit brightness dimmable

④ Power on/off button, with memory function, press the on / off button once to automatically remember the last use.

⑤ Area for DIY placement of the selected labels



Press and hold the on / off button for 3 seconds to switch 7 colors of backlight

BACKLIT BRIGHTNESS DIMMABLE

The brightness of the lighting on the switch panel will automatically adjust in reaction coming from external light.



The light on the switch panel will dim to lessen the impact on the driver's vision in the tunnel or other dark areas.



The light of the control panel will adjust and illuminate brighter depending on the ambient light during the daytime.

80 PCS REUSABLE SWITCH LABELS

Thoroughly clean the switch panel.



Peel off the lable and firmly press down on the switch panel.

Multi-function labels for DIY your specific needs.



DIY Labels



CONTROL BOX INSTALLATION

MOUNTING THE CONTROL BOX

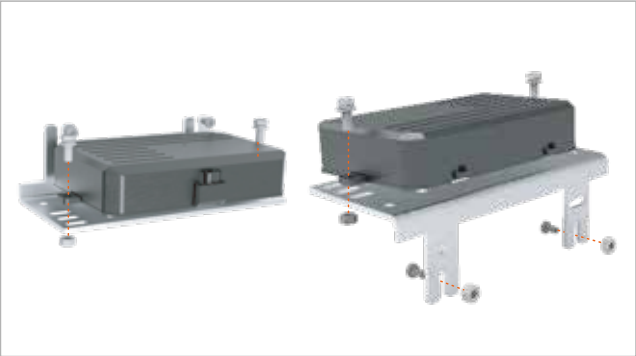
There are two different installation methods available, fixed mount using the bracket provided or installing it flush in a suitable area.

The ideal mounting of the control box should be in areas where the harness is not exposed, preventing it from damage.

If you decide to make provision for the control panel, please check the clearance to prevent any damage to the car's wiring harness and other components of the vehicle.

OPTION 1 : Fix Mount

Using the mounting bracket as a guide, find a suitable location to mount the control box.



OPTION 2 : Flush Mount

Using the control box as a guide, find a suitable location to mount the control box.



SWITCH PANEL INSTALLATION

SWITCH PANEL MOUNTING

- ▶ There are two different installation methods using the adjustable brackets provided.
- ▶ Attach the switch panel to the mount bracket you need, then use the supplied screw accessories to fix the bracket.
- ▶ The ideal thickness of the mounting surface should be between 1/8" to 1/4".
- ▶ Make sure the control wire and extension lead are long enough to reach the desired location.
- ▶ Check there is enough clearance in the desired location.
- ▶ Once you decide where to mount, use the bracket to mark the drill location.

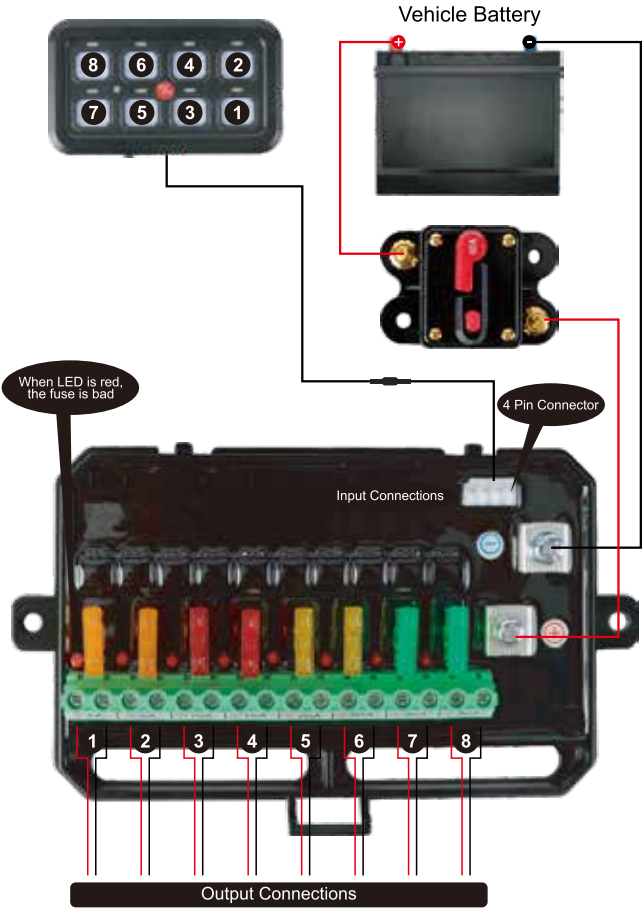
OPTION 1 : Angle Adjustable Mount



OPTION 2 : Flush Mount



SWITCH ASSEMBLY WIRING DIAGRAM



Connect to 8 auxiliary LED lights or electrical devices

The total power will go to 600W at 12V, 1200W at 24V and the maximum current is 60A.

The maximum output current for 1 to 6 is 20A and for 7 to 8 is 30A.

The recommended connection method is to decrease the current gradually from 1 to 8.

Ensure all the wiring connections are completed before connecting the power cables to the battery.

Circuit 1	Circuit 2	Circuit 3	Circuit 4
5A	5A	10A	10A
Circuit 5	Circuit 6	Circuit 7	Circuit 8
20A	20A	30A	30A



Distributed by:
Electus Distribution Pty Ltd
46 Eastern Creek Dr,
Eastern Creek NSW 2766 Australia
Ph 1300 738 555
Int'l +61 2 8832 3200
Fax 1300 738 500

www.electusdistribution.com.au