

700 Lumen Waterproof Floating Spotlight

User Manual

ST-3311

 **WARNING**

Read and follow all warnings and instructions in this manual to avoid personal injury or property damage

To prevent damage to eyesight, never look into light when light is on. Do not shine light into the face of someone else.

IMPORTANT SAFETY WARNINGS



READ AND FOLLOW ALL SAFETY WARNINGS AND INSTRUCTIONS IN THE OWNER'S MANUAL BEFORE OPERATING SPOTLIGHT.

WARNING

- Never place spotlight face down when light is on or is still hot from recent use. Doing so could burn/ignite surfaces such as seats, carpeting, etc. and cause major property damage. Always turn spotlight off when not in use.
- Always unplug charger from light and power source when not in use.
- To avoid potential eye damage, never look straight into the light source when spotlight is turned on! Also, never aim the light straight into the eyes of anyone else!
- DO NOT touch lens of spotlight when light is on or if it was recently on. The lens will be hot and could cause serious burns.
- DO NOT allow children to handle or operate this spotlight.
- DO NOT use this product for other than its intended use.
- DO NOT charge or operate in close proximity of combustible or flammable materials.
- DO NOT charge battery in gas tight enclosures.
- DO NOT attempt to charge battery pack using both AC and DC chargers at the same time.
- DO NOT attempt to charge or operate this spotlight if cord, plug, battery, bulb or any part of the spotlight is damaged or corroded.
- DO NOT use an outdoor AC outlet to recharge battery.
- Only use charging devices that are provided with the LED Spotlight or its replacements.
- DO NOT disassemble or tamper with the battery.
- DO NOT dispose of battery in fire as this may result in explosion.

USE CAUTION AND COMMON SENSE WHEN OPERATING YOUR RECHARGEABLE LIGHT.

FAILURE TO ADHERE TO THE SAFETY WARNINGS AND GUIDELINES IN THIS MANUAL COULD RESULT IN BODILY INJURY OR PROPERTY DAMAGE.

SAVE THIS MANUAL FOR FUTURE REFERENCE.

OPERATING INSTRUCTIONS

⚠ READ AND FOLLOW ALL SAFETY WARNINGS AND INSTRUCTIONS IN THE OWNER'S MANUAL BEFORE OPERATING SPOTLIGHT.

Inspect contents of the box to ensure all parts are included and undamaged.



Step 1: Follow charging instructions on page 3 of this manual and allow battery to fully charge.

Step 2: Remove the Orange insulator cap on the back of the spotlight.

Step 3: The button allows you to choose various settings: Half power – Full power – Flashing signal (S.O.S.) – OFF.

If you press the button for 3 seconds, the light on the backside of the red light is turned on.

- A fully charged battery will provide approximately 1.5 hours of continuous light.
- Do not allow battery to completely discharge. Turn OFF spotlight and recharge battery as soon as possible.

Part List:

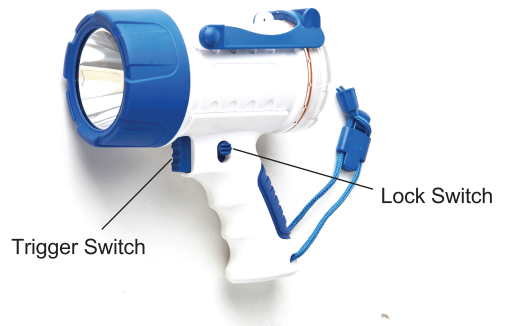
- ① LED Premium Spotlight
- ② 100-240 Volt AC Charger
- ③ 12 Volt DC Charger
Owner's Manual

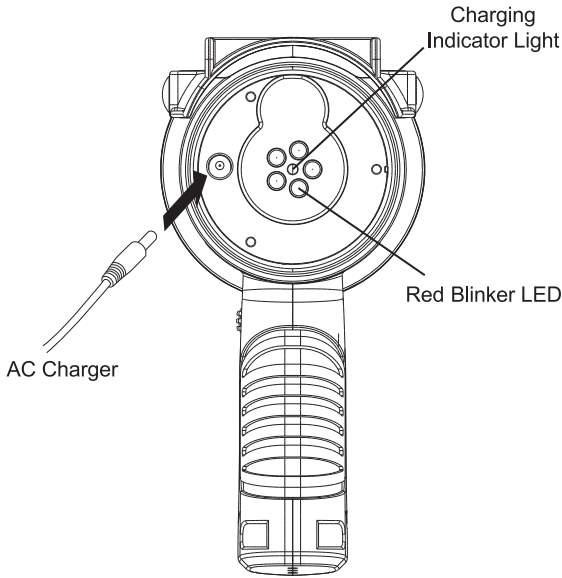
To Operate

IMPORTANT:

Unlock and turn spotlight OFF before charging from AC. The battery cannot charge if the spotlight is ON. Leaving spotlight ON during charging may cause damage to battery and AC charger.

12-volt DC charger operates from a DC receptacle for charging battery.





To Charge Spotlight:

Step 1: Make sure the trigger switch is not locked ON.
 Step 2: Remove the plastic protective cover on the back of the light.

Step 3: Remove the Orange insulator cap.

Step 4: Plug the AC charger or 12VDC charger into the back of spotlight.

Note: LED indicator will turn on when charging from both AC and DC chargers and turn off when it is fully charged.

Always Allow Battery to Fully Charge

Step 4: For DC Charger - Battery charges only while vehicle engine is running.

For AC Charger - Allow battery to fully charge.

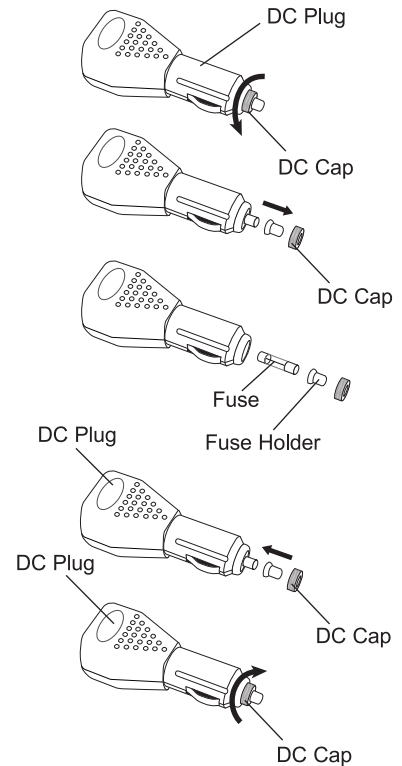
To prevent power drain when light is not in use for long period of time, install the orange insulator cap back before light is put in storage.

To Replace DC Plug Fuse

- Step 1: Disconnect spotlight from power source.
- Step 2: Unscrew cap of DC plug and pull straight away from fuse.
- Step 3: Pull fuse holder and fuse out of DC plug. Observe to see if fuse is burned out.

Note: Use a 2A fuse only. Fuse is burned out when fuse element is missing or broken inside glass tube. Replace with new 2A fuse if fuse element is missing or broken.

- Step 4: Pull fuse out of fuse holder. Insert new fuse into holder.
- Step 5: Insert fuse holder and fuse into lighter plug.
- Step 6: Screw cap onto lighter plug.



To Prevent Damage to Spotlight and Battery:

- Battery is ready to use when purchased - DO NOT recharge before first use.
- Do not attempt to use spotlight while charging directly from AC outlet. Doing so may cause damage to battery and AC charger.
- 12-volt DC charger operates from a 12-volt DC receptacle for charging battery while vehicle engine is running.
- Only use charging devices that are provided with the LED Spotlight or its replacements.
- For DC Charger - Battery charges only while vehicle engine is running.
- For AC Charger - Allow battery to fully charge. L.E.D. indicator on spotlight will automatically turn off when battery is fully charged.
- Do not allow battery to completely discharge. A dim light indicates a low battery. Recharge battery as soon as possible after each use.
- Always keep the battery fully charged when not in use.
- For best results, fully charge battery after each use. This will prolong the overall life of the battery.

IMPORTANT: Charge battery before storing for extended periods. Battery will keep its charge. A completely discharged battery may not recharge properly.

MAINTENANCE

Use only mild soap and damp cloth to clean the outer housing.



Contains lithium-ion battery. Battery must be recycled or disposed of properly.

Environmental Protection

Waste electrical products should not be disposed of with household waste. Please recycle where facility exist. Check with your local authority for recycling information.



DISTRIBUTED BY:

TechBrands by Electus Distribution Pty. Ltd.
320 Victoria Rd, Rydalmere
NSW 2116 Australia
Ph: 1300 738 555
Int'l: +61 2 8832 3200
Fax: 1300 738 500
www.techbrands.com
Made in China