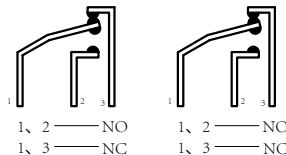
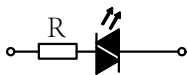


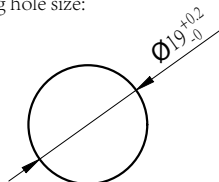
Switch structure description:



Lamp bead equivalent circuit :



Mounting hole size:



Performance requirements:

Protection grade: IP67

Contact resistance:  $\leq 50\text{m}\Omega$

The insulation resistance:  $\geq 100\text{M}\Omega$

Electrical resistance: AC2500V, 1min, no flicker and breakdown;

Life: Electrical part: operate 50,000 times under rated load without any abnormality.

Mechanical part: no abnormal movement for 1000,000times

Technical requirements:

The surface is smooth without burr;

Clear handwriting of parameters/batches without any dislocation;

Electric parameter:5A Ui: 250V;

Working environment temperature:  $-25^{\circ}\text{C}\sim+65^{\circ}\text{C}$ ;

Operation type: Momentary; Latching ;

Movement stroke: about 3.2mm

Connection form: Matching connectors/Welding wire;

Tightening torque: about 0.6Nm;

Contact configuration: 1NO1NC;

Appearance material: Button surface: PC/Stainless steel; PC/Nickel-Plated Brass;  
Housing: Stainless steel; Nickel-Plated Brass  
Pedestal: PBT;  
Contact silver alloy

Unmarked tolerance shall be in accordance with GB/T 1804-m class.

Lamp bead parameters: Rated Voltage: 6V/12V/24V/36V; 110V/220V;  
Rated current:  $\leq 20\text{mA}$

LED color: Red/Green/Yellow/Orange/Blue/White

Led life: 50000 hours.