

POWERTECH



**Smart Wi-Fi LED Bulb
with Colour Change
SL2250
User Manual**

Smart LED Bulb User Guide

NO.1 Download and install the App

Search and down load “Smart Life” in major application markets or scan the QR code below to download the APP



NO.2 Sign in App

Smart LED Bulb User Guide

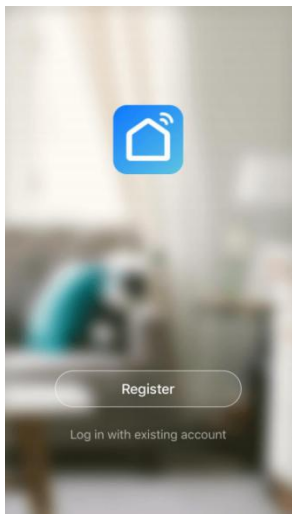


Fig. 1

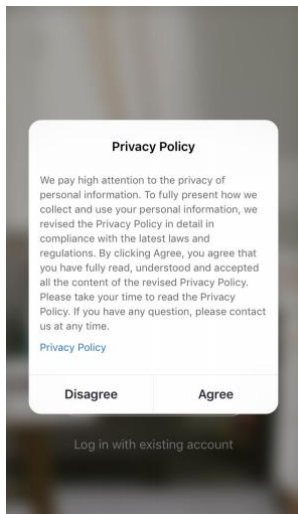


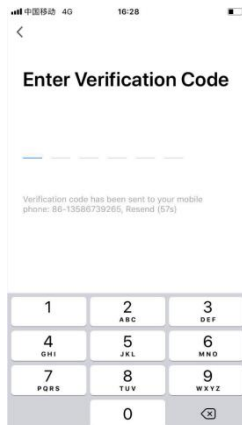
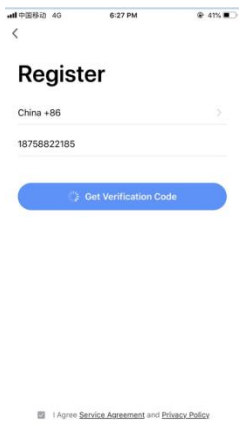
Fig.2

Registration

If you do not have an app account, you may choose to register or log in by authentication code. The registration process is described on this page and the next.

1. Click "Register" to go to the smart life privacy policy page. Click "Agree" to proceed to the registration page.
2. Sign in with mobile phone number + verification code. Select your country code, enter the phone number and tap "get" to get a message containing verification code. Enter the verification code in the message and tap "Login" to login the App.
3. Sign in with social media account.

Smart LED Bulb User Guide



NO.3 Add device

When install the light, please reset it to enters the

Smart LED Bulb User Guide

networking state.

The steps is:

ON-OFF-ON-OFF-ON-OFF-ON(interval time shall not exceed 2 second but more than 1 second) until it flashes rapidly. Switch time interval shall exceed 10s.

Step 1

At the state of lights on

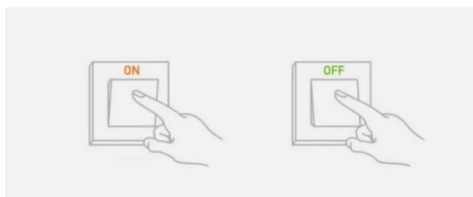
Turn off the lights and wait 10 seconds



Step 2

Turn on-off-on-off-on-off-on

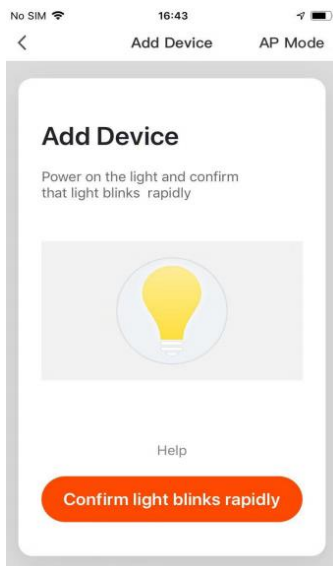
(Keep time interval not too short, turn off after light is on)



Then confirm lights blinks rapidly, tap “+” at the upper right corner of the “Devices” interface and pick the Lighting to connect the APP.

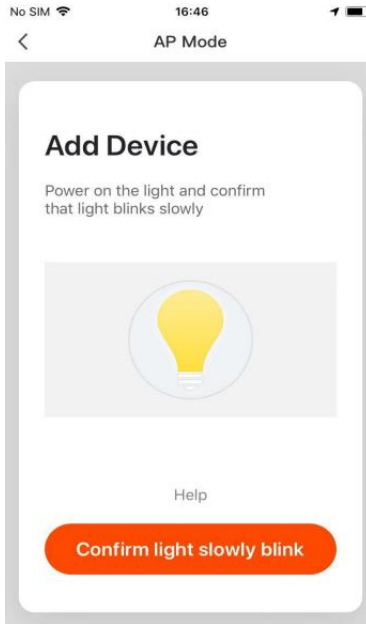
The specific steps are as follows:

Smart LED Bulb User Guide



1. The app supports two configurations: Default mode and AP mode. Click "AP Mode" at the top right corner of the "Default mode" page to switch between modes
2. To select "Default mode", please make sure the indicator light on the smart device is flashing rapidly (blinking twice per second) and then click the button to proceed to the next step
3. If the indicator light is not flashing rapidly, click "Help" to view the instructions

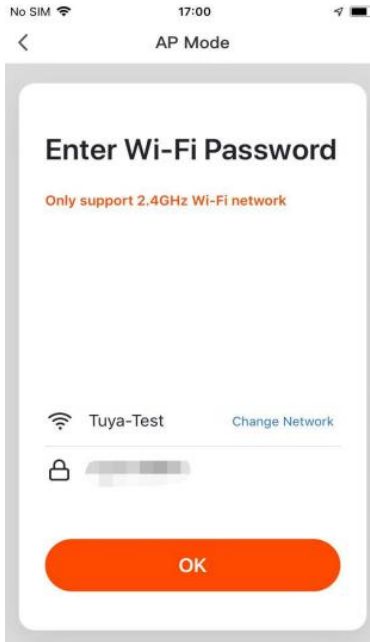
Smart LED Bulb User Guide



1. To select "AP Mode", please make sure the indicator light on the smart device is flashing slowly (blinking once every three seconds) and then click the button to proceed to the next step.
2. If the indicator light is not flashing slowly, click "Help" to view the instructions.

Smart LED Bulb User Guide

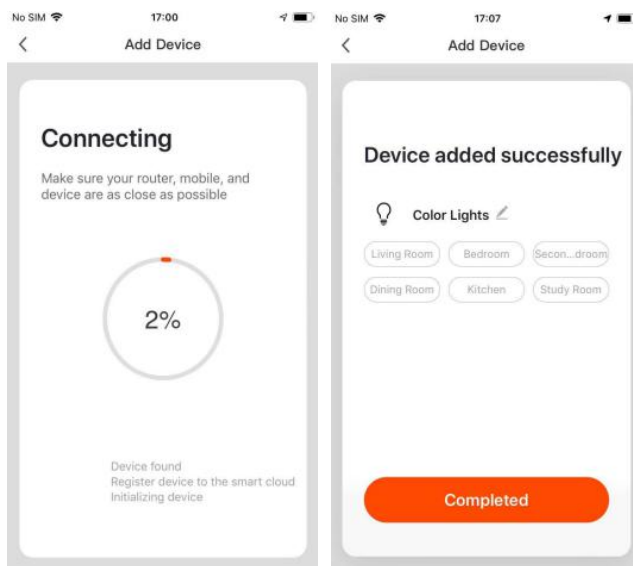
Enter Bluetooth password



In a selected mode, clicking confirm button on the page when the indicator light flashes rapidly/slowly will bring up the page shown in pic

Select the Wi-Fi in the work area of a device that can enable successful Internet connection, enter the Wi-Fi password, and click "OK" to proceed to configuration.

Smart LED Bulb User Guide



If default mode is selected, app configuration will be completed. Successful configuration will appear. Names of devices that have been configured successfully can be changed, and the locations of the rooms where the corresponding devices are can be selected.

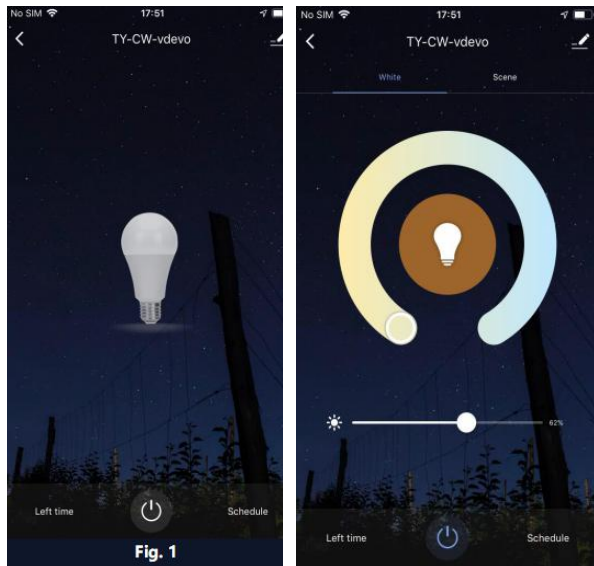
Note:

1. Connect light bulbs only via WiFi for the first time, please make sure that the light is quickly flashing, and WiFi password you inputted is correct (The connection process may take several minutes, please be patient.)
2. After the first connection, you can use a new WiFi or mobile data traffic to control lights anytime at everywhere.

Smart LED Bulb User Guide

NO.4 Control Devices

5.1 Individual Control



Open the control panel for devices. For example, Fig. 1 shows the light is off, and only the timer can be accessed in the off mode. Fig. 2 shows the light is on, and scene, color, brightness, and schedule can be configured in the on mode. Click ".." at the top right corner of the control panel to manage individual devices.

5.1 Group Control

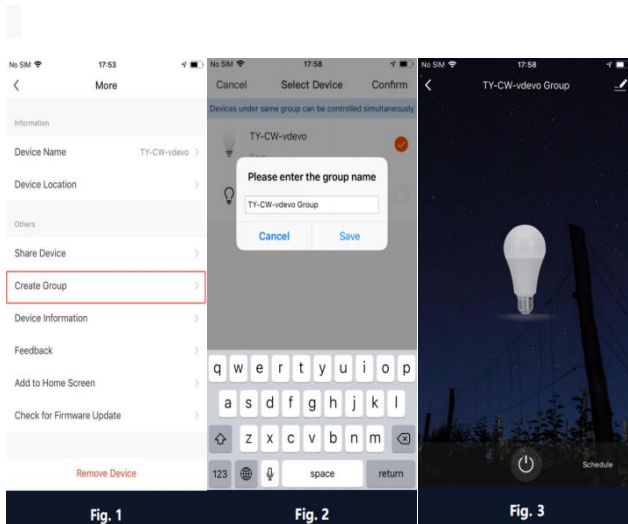
1.Click "Create Group" under "More" on a selected

Smart LED Bulb User Guide

device page, as shown in Fig. 1.

2.The page displays all devices with the same model number and available to be added as a group. Select a device and click “Save”, then enter group name and click “Confirm” to finish, as shown in Fig. 2.

3.When a group has been created successfully, the page will be automatically redirected to the group control panel in Fig. 3, where grouped devices can be managed.



NO.5 Profile

1. Device Sharing. Could type in a new member's mobile phone number and share the device with

Smart LED Bulb User Guide

him.

2. Integration: Connect Amazon Alexa & Google Home instruction manual.

At present there are only 3 orders available in Amazon Alexa and Google Home: color changing, brightness setting and switch on or off the light.

NO.6 Note

1. After you power off the light and power it back on, you have to connect the first WiFi to control the light.

2. Only supports WLAN in 2.4GHZ, Android 4.1 above and ios8.0 above. Do not apply to 5G WiFi.

3. When you connect multiple WiFi bulb, don't let the both bulb too close, it may cause signal interference.

4. After a long period of use, the phenomenon of light jumping occurs when the light is off through switch instead of APP, which is a normal phenomenon.

Distributed by:
TechBrands by Electus Distribution Pty. Ltd.
320 Victoria Rd, Rydalmere
NSW 2116 Australia
Ph: 1300 738 555
Int'l: +61 2 8832 3200
Fax: 1300 738 500
www.techbrands.com