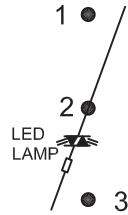


### SWITCH CIRCUIT APPLICATION



SPST

Pole on/off illuminated

### ROCKER SWITCH MODEL MR2 SERIES

RATING:16A 12VDC (cURus/ENEC15)

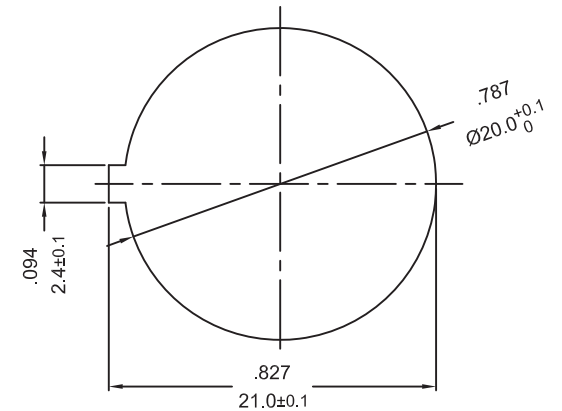
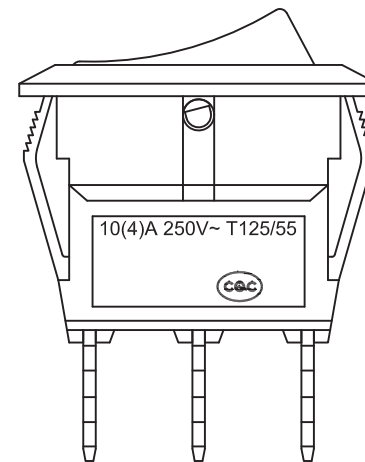
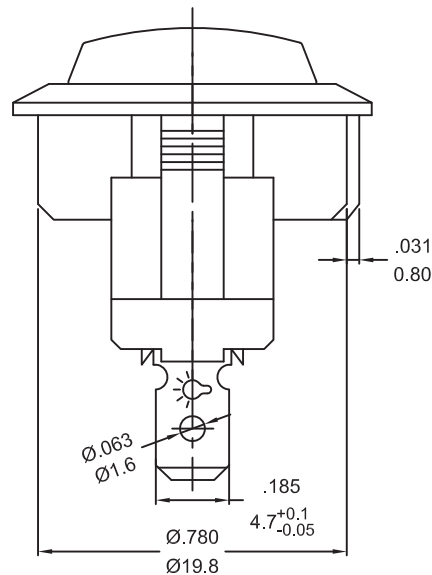
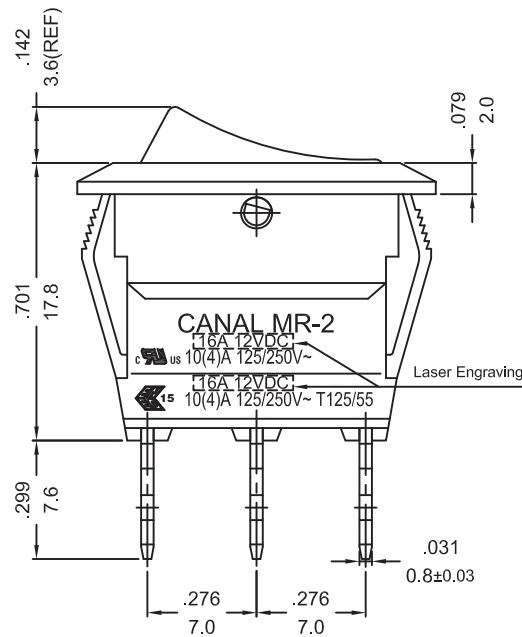
10(4)A 250V~T125/55 (CQC)

DIELECTRIC VOLTAGE-WITHSTAND:1,500VAC FOR 1 MINUTE

INSULATION RESISTANCE:DC 500V 100MΩ (MIN.)

CONTACT RESISTANCE:20mΩ INITIAL (MAX.)

ILLUMINATED:12VDC



PANEL THICKNESS:1.0~2.0mm

NOTE:TOLERANCES UNLESS OTHERWISE SPECIFIED:± .012/0.3 (in/mm)