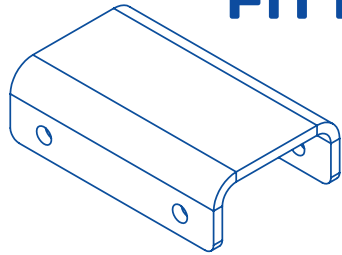
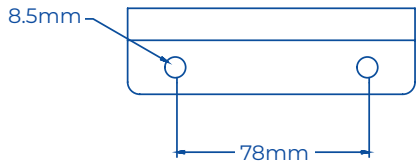


## FITTING GUIDE



Each XO Series corner steady is supplied with a chassis mount bracket. The chassis mount bracket needs to be welded to the recreational vehicle chassis, the corner steadies are then bolted to the chassis mount bracket utilising the 8mm bolts supplied.

The XO Series corner steady chassis mount shares the same bolt hole and spacing of the ARK corner steadies as well as other brand corner steadies which are fitted as standard from factory. This means the XO Series corner steady can be easily retrofitted to most recreational vehicles on the market.



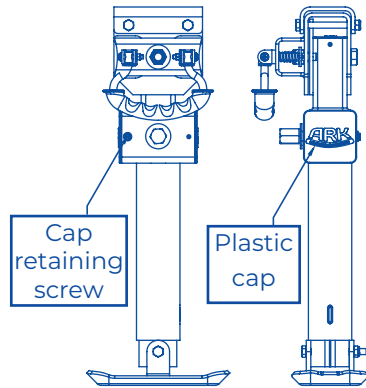


**WARNING**

WELDING SHOULD ONLY BE CARRIED OUT BY A QUALIFIED WELDER! INCORRECT WELDING PRACTICES CAN LEAD TO JOINT FAILURE AND IN TURN CAUSE SERIOUS INJURY TO PERSONS AND PROPERTY.

## MAINTENANCE

Minimal maintenance is required to keep the XO Series corner steady looking new and in good working order. Protect the finish by keeping it clean and periodically applying a coating of silicone lubricant spray. Lubrication is needed if the XO Series corner steady ever feels rough or produces a grinding noise when cranked. With weight off the XO Series corner steady, remove plastic cap by unscrewing cap retaining screws. Place a sufficient amount of grease on the bevel gears, crank the hex drive to ensure an even amount of grease is distributed on the bevel gears. Replace plastic cap and insert cap retaining screws.



If the XO Series corner steady is fitted to a recreational vehicle that is subjected to constant immersion into salt water or water crossings then maintenance should be carried out more periodically.

**NOTE**

Ark products are covered under consumer law outlined in its warranty policy available online [www.arkcorporation.com/warranty-claim-policy/](http://www.arkcorporation.com/warranty-claim-policy/). Ark does not warrant the workmanship of welders, fabricators or recreational vehicle manufacturers. Checks should be made with the recreational vehicle manufacturer as to whether the recreational vehicle can handle the twisting forces of jacking from each corner.



Ark Corporation Pty Ltd  
8 Smoothy Place  
Arndell Park NSW 2148  
sales@arkcorporation.com  
www.arkcorporation.com

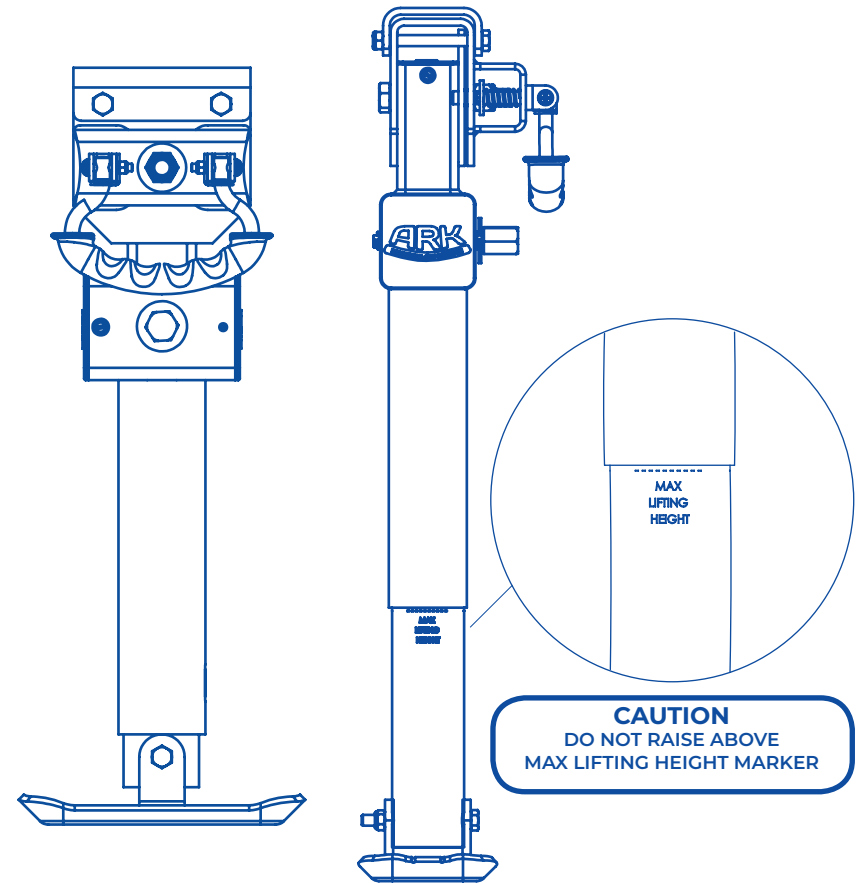


## DROP DOWN CORNER STEADY INSTRUCTIONS

V1.1/21

### XODDS650 & XODDS850

Ensure this manual is stored in a safe place and handed over to the owner for reference on operation and maintenance.



4 XO SERIES CORNER STEADIES COMBINED SUIT  
3500KGS (7700LBS) RECREATIONAL VEHICLE.



# USE AS A CORNER STEADY

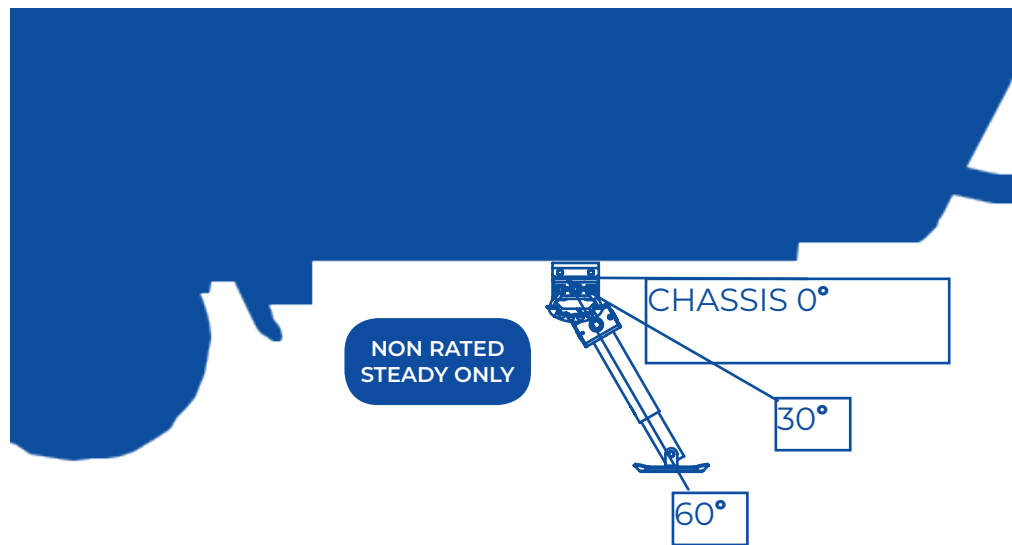
General corner steadies are not designed to lift recreational vehicles off the ground, they are designed to stabilise the recreational vehicle when stationary.

When stabilising your recreational vehicle, follow the below steps:

1. Pull the locking handle and adjust the corner steady in any of the 30°, 60° or 90° angle positions that the terrain allows.
2. Release the locking handle to lock corner steady into position.
3. Utilising a 19mm winding arm or drill fitted with a 19mm socket, wind hex drive until the foot plate is firm on the ground.
4. Repeat the above steps for each corner of the recreational vehicle.
5. Reverse steps to lower and stow XO Series corner steadies.

**WARNING**  
DO NOT JACK RECREATIONAL VEHICLE UP ON THE 30° OR 60° LOCKED POSITION AS SHOWN BELOW, THESE POSITIONS ARE FOR STEADYING THE RECREATIONAL VEHICLE ONLY.

**CAUTION**  
FAILING TO ADHERE TO THE ABOVE WARNING WILL VOID ALL WARRANTY AND CAN CAUSE SERIOUS INJURY TO PERSONS AND OR PROPERTY. PLEASE FOLLOW JACKING INSTRUCTIONS ON FOLLOWING PAGE.



**IMPORTANT**  
WHEN STEADYING A RECREATIONAL VEHICLE, ENSURE RECREATIONAL VEHICLE PARKING BRAKE IS APPLIED AND WHEELS CHOCKED TO PREVENT ANY CHANCE OF MOVEMENT.

# USE AS A JACK

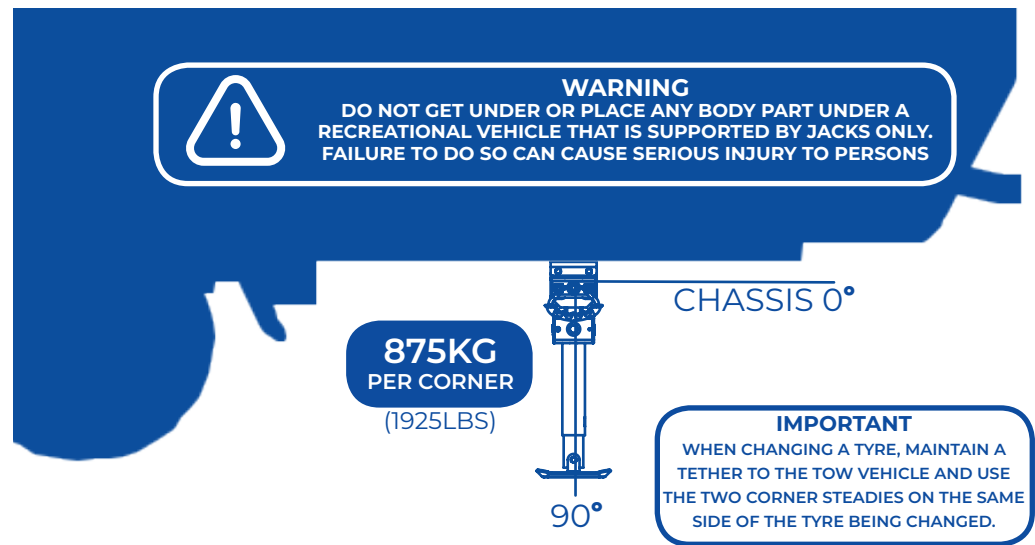
The XO Series corner steadies have a dual functionality and can provide jacking to your recreational vehicle for changing tyres or aiding in recovery.

Each XO Series corner steady can provide jacking to a recreational vehicle when used in the **90° ANGLE POSITION ONLY!**

When jacking your recreational vehicle for changing tyres or aiding in recovery, follow the below steps:

1. Ensure recreational vehicle remains tethered to the tow vehicle.
2. Pull the locking handle and adjust the corner steady to the 90° angle position only as shown below. Repeat for other corners.
3. Utilising an impact driver fitted with a 19mm impact socket, wind hex drive until the foot plate is firm on the ground. Repeat for other corners.
4. Ensure impact driver is on the lowest speed and raise each corner incrementally ensuring the over all load is shared across the recreational vehicle being raised. DO NOT EXCEED MAX LIFTING HEIGHT MARKER (P1)
5. Only raise the recreational vehicle high enough to change the tyre or aid in the recovery of recreational vehicle.
6. Reverse steps to lower and stow XO Series corner steadies. Please take note to lower each corner incrementally and slowly as the corners are bearing the weight of the recreational vehicle.

**WARNING**  
DO NOT GET UNDER OR PLACE ANY BODY PART UNDER A RECREATIONAL VEHICLE THAT IS SUPPORTED BY JACKS ONLY. FAILURE TO DO SO CAN CAUSE SERIOUS INJURY TO PERSONS



**OFF ROAD TIP**  
XO SERIES CORNER STEADY FOOT PLATE IS DESIGNED TO BE USED WITH HIGH LIFT JACK BASE PLATES. THIS ALLOWS AN EXTRA WIDE FOOT PRINT ON SOFT TERRAIN.