

CONCORD

CONNECTING TOGETHER

QV8820 – 10 Channel 5MP

QV8822 – 10 Channel 4K

**NVR QUICK START GUIDE
AND APP INSTALLATION**

What's in the box?

Congratulations on your new Concord Professional Surveillance System. Inside the box, you will find everything you need to connect your NVR and cameras to your TV or monitor.



WiFi NVR Recorder Unit



Cameras (4)



Ethernet Cable



Mouse



Mounting Accessories
(1 Pack per Camera)



Weatherproof
Covers
(1 Set per Camera)

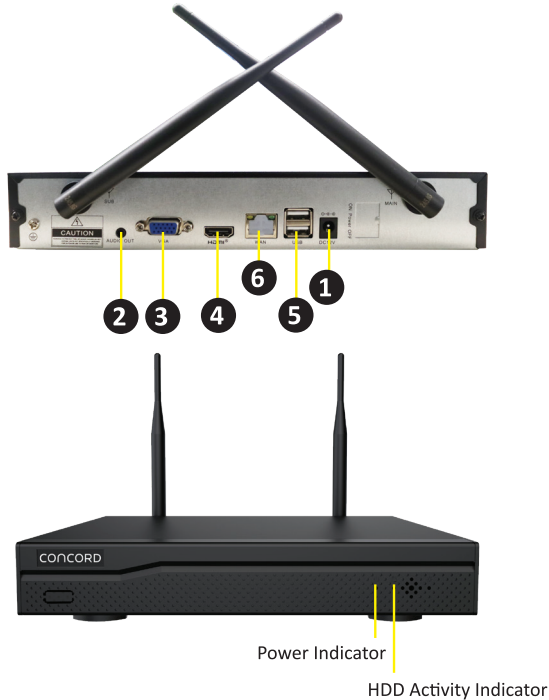


Power adaptor (NVR) x 1
Power adaptor (cameras) x 4



Quick Start
Guide

Getting to know your NVR

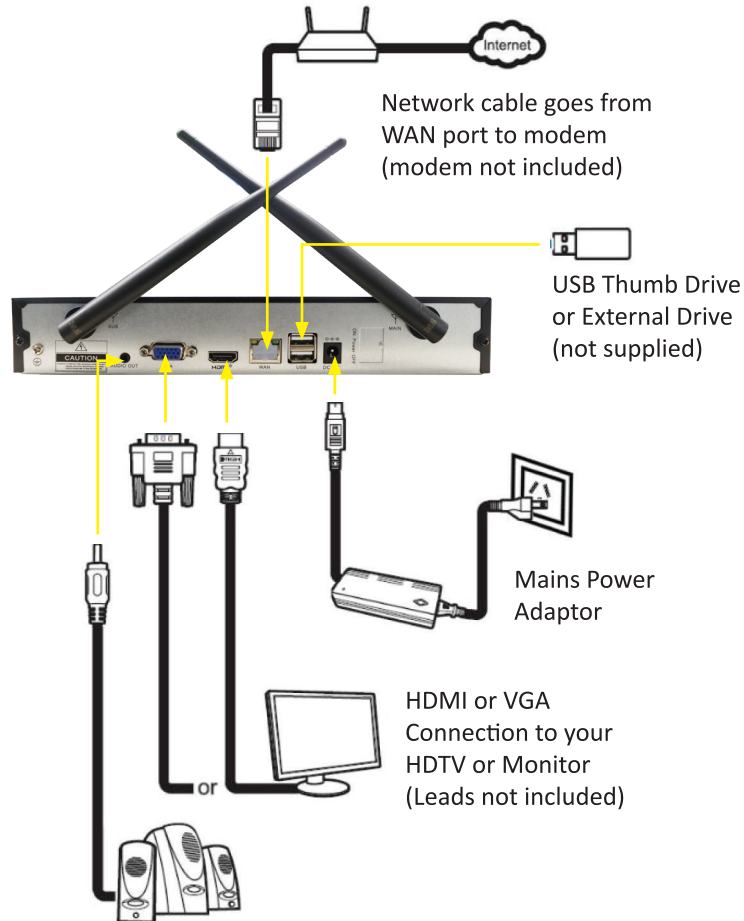


1	Power Input	Connect 12V power supply.
2	Audio Output	Optional connection to an amplifier or active speakers, using a 3.5mm audio connection
3	VGA Monitor Port	To connect monitors that use a VGA connection.
4	HDMI Monitor Port	To connect monitors that use an HDMI connection.
5	USB Ports	USB ports for mouse or thumb drive to share videos.
6	WAN Port	Connect the blue patch lead to the WAN port, and connect the other end to the WAN port on your modem.

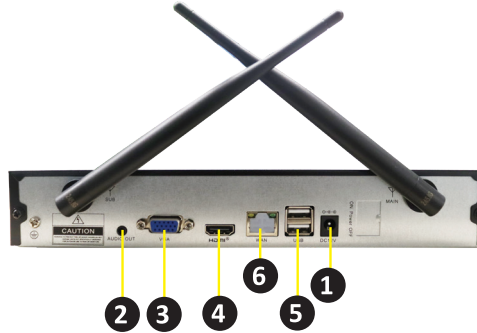
Note:

This guide assumes a minimal standard installation using only the out-of-box cables and mounting aids. You will need to consider your specific installation needs, such as distance between the NVR and cameras or internet router. You may need additional cables and/or equipment for your specific situation which are available at your reseller.

How to connect your NVR



Easy 4 Step guide



**IMPORTANT
INFORMATION**

We strongly recommend you connect all cameras and cables and check they are communicating and can be seen on your monitor before permanent installation.

STEP 1: Internet Connection

Connect the WAN/network port to your internet router or modem using the ethernet cable. **6**

STEP 2: Connect a display

Connect a monitor or HDTV to **4** using a HDMI cable or, if your monitor uses a VGA cable, to **3** using your own VGA cable.

STEP 3: Connect USB mouse: Connect the supplied USB mouse to either USB port **5**.

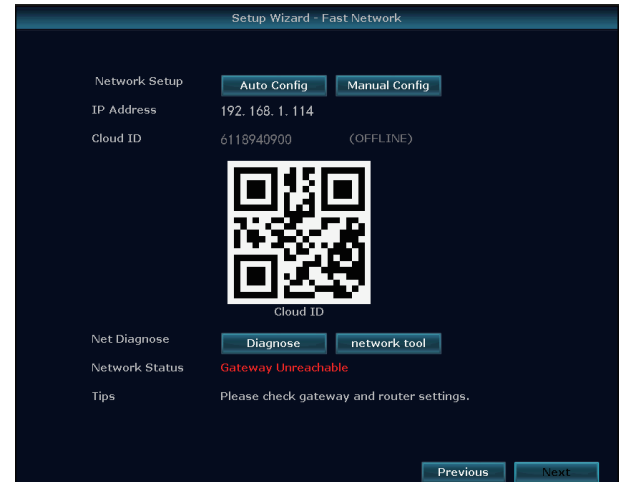
STEP 4: Powering up your device: Connect the power supply unit to the power input. **1**

Setup Wizard

1. Ensure the NVR is connected to the internet using the network patch cord provided. Connect your HDMI lead to the monitor and ensure all cameras are powered up and switched on. Turn on the NVR; the system will then prompt you to update the time and date after powering on the device.

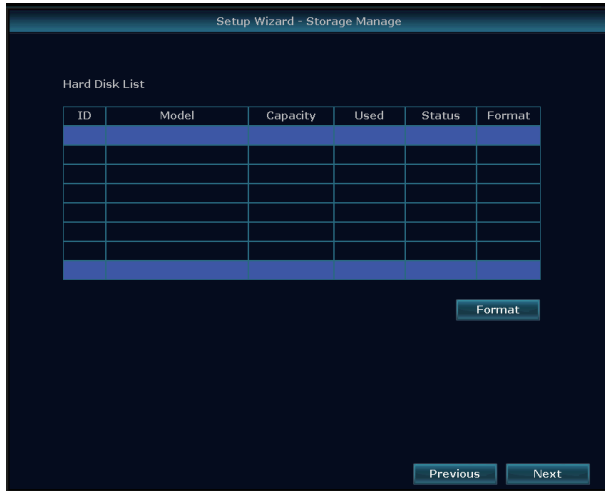


2. The network details will be displayed in the next step, confirming if you are connected to the internet with green text. Select 'Next' to continue.

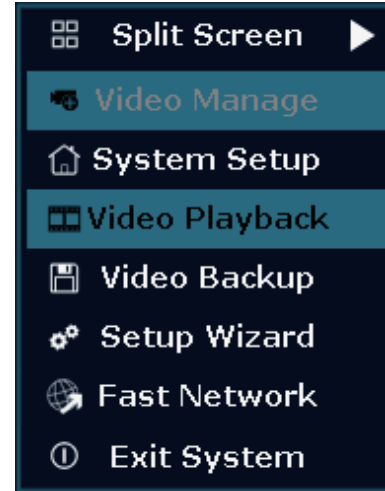


Setup Wizard

3. The next screen will display whether the NVR you purchased has an internal hard drive installed. Select 'Next' to proceed.



4. Right-click on the mouse to open the menu, then select 'System Setup' to set up your password.



Setup Wizard

5. Select 'System Admin' to continue.



6. Set up your password by entering it in the 'New Password' field, then re-enter the same password in the 'Repeat' field to confirm. Select 'OK' to continue.

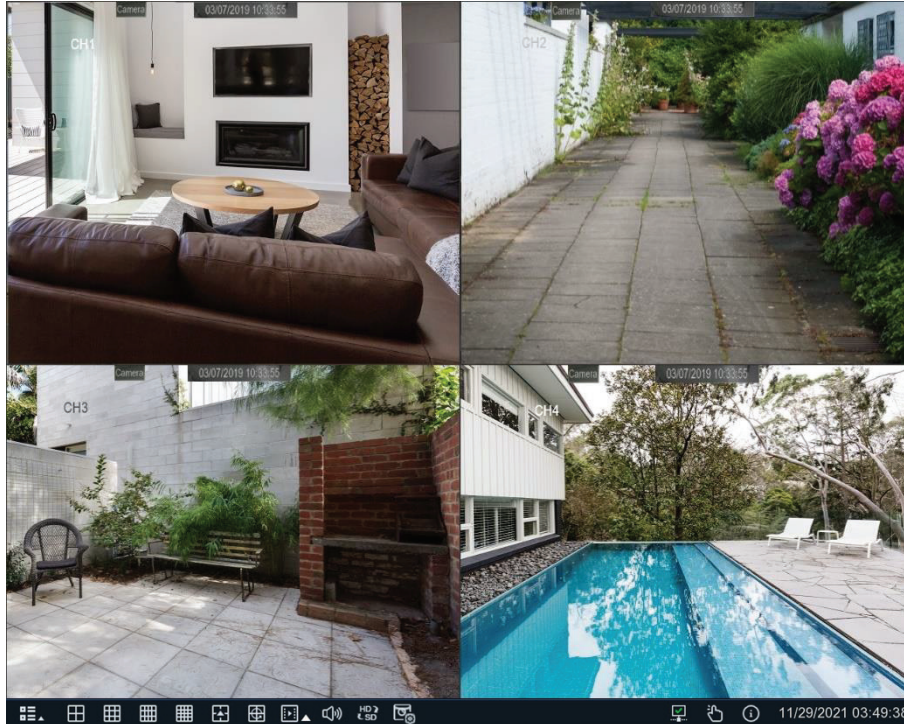


You are now set up to use the Concord Surveillance NVR kit.

Setup Complete

ALL BASIC CONFIGURATIONS ARE NOW COMPLETE

Your HDTV or monitor should have vision from all connected cameras.



Setting Up Your Android Device for Mobile Viewing

Setting Up Your Android Device for Mobile Viewing

1. Download the Concord Connect app from the Play Store.



2. Agree with the terms and conditions.

Concord Connect
Welcome to Concord Connect

Tips

Thank you for using the APP. We attach great importance to the protection of your personal information and privacy. In order to better protect your personal rights, please read carefully and fully understand the "Privacy Policy" and "User Agreement" before you use our products. All terms within. We will explain to you through the above agreement.

1. We collect/save/use/protect your personal information and other rules, as well as your user rights;
2. Agreement on our limitation of liability and exemption terms.

The act of clicking "Agree" means that you have read and agreed to all the contents of the above agreement.

3. Select 'Register' then key in your email address and setup your password.

Concord Connect
Welcome to Concord Connect

[Email Login](#) [Phone number](#)

E-mail

Please enter the email address you need to log in/create an account. [Register](#)

[Login to agree](#) [User Agreement](#) [Privacy Policy](#)

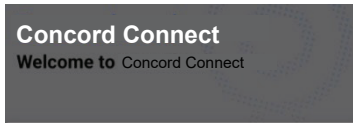
4. Select 'Agree and continue'.

Guidelines such as Service Agreement and Privacy Policy

Before logging in, please read and agree to EseeCloud
[User Agreement](#) [Privacy Policy](#)

Setting Up Your Android Device for Mobile Viewing

5. Select 'Agree' to continue.



Tips

Thank you for using the APP. We attach great importance to the protection of your personal information and privacy. In order to better protect your personal rights, please read carefully and fully understand the "Privacy Policy" and "User Agreement" before you use our products. All terms within. We will explain to you through the above agreement:

1. We collect/save/use/protect your personal information and other rules, as well as your user rights;

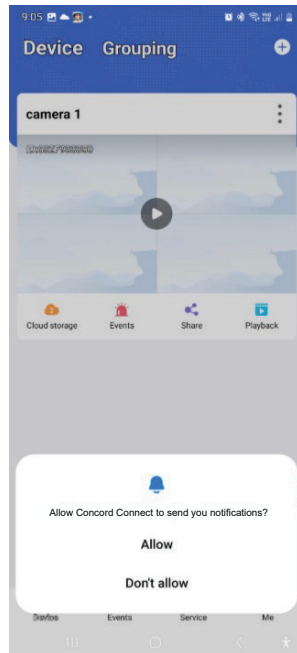
2. Agreement on our limitation of liability and exemption terms.

The act of clicking "Agree" means that you have read and agreed to all the contents of the above agreement.

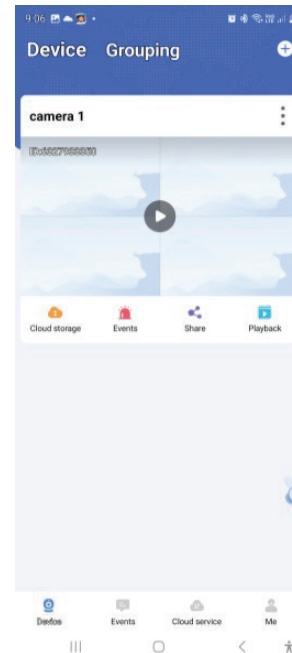
Refuse

Agree

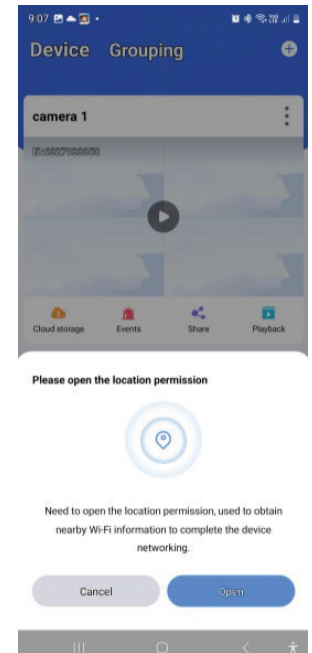
6. Select 'Allow' to receive notifications.



7. Select the '+' icon to add a device.

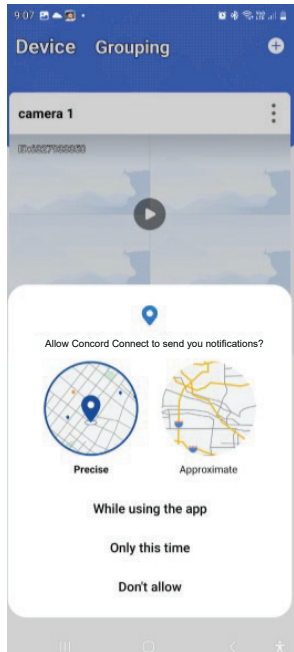


8. Select 'Open' to allow location permission.

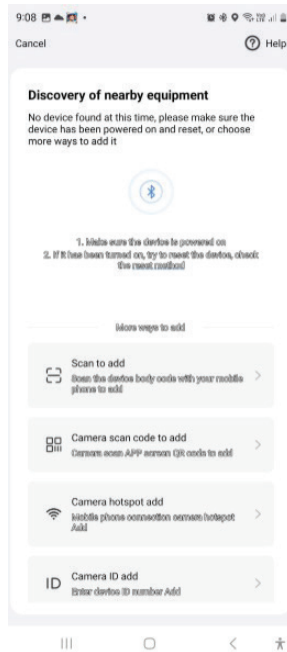


Setting Up Your Android Device for Mobile Viewing

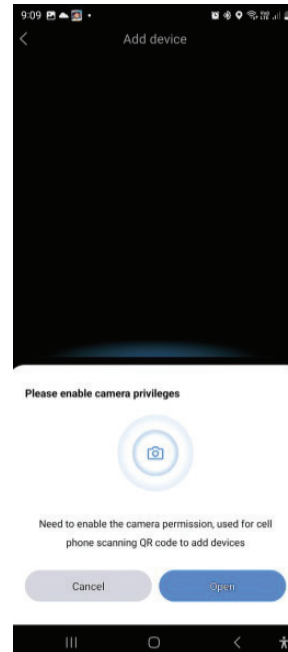
9. Select 'While using the app'.



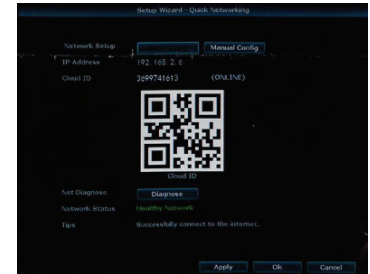
10. Select 'Scan to add' to add your device.



11. Your smartphone is now ready to scan the NVR QR code to add your device.

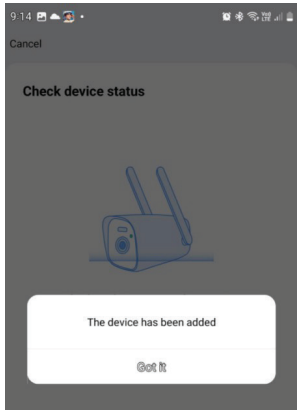


12. Go to Setup Wizard on your monitor to scan the QR code from your smartphone.

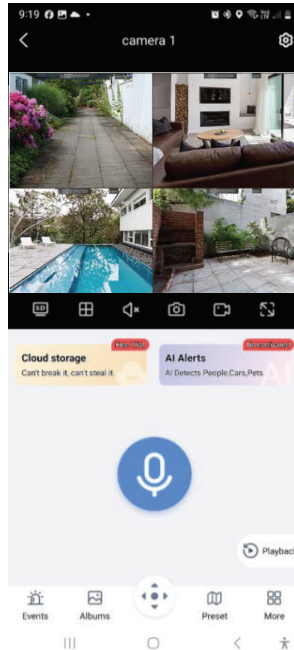


Setting Up Your Android Device for Mobile Viewing

13. Once scanned successfully, the app will confirm that the NVR has been added. Then, select 'Got it' to continue.



14. Your NVR has now been successfully paired with your smartphone for Mobile View.



Setting Up Your iOS Device for Mobile Viewing

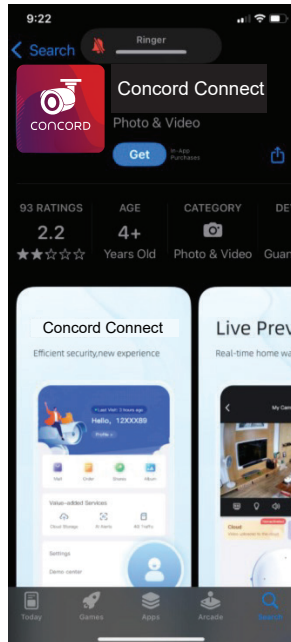
Setting Up Your iOS Device for Mobile Viewing.

1. Download the Concord Connect app from the APP Store.

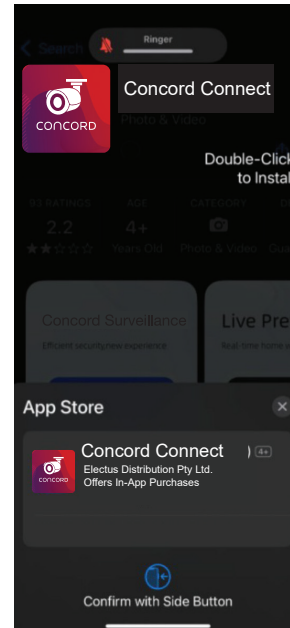


Scan for App Store

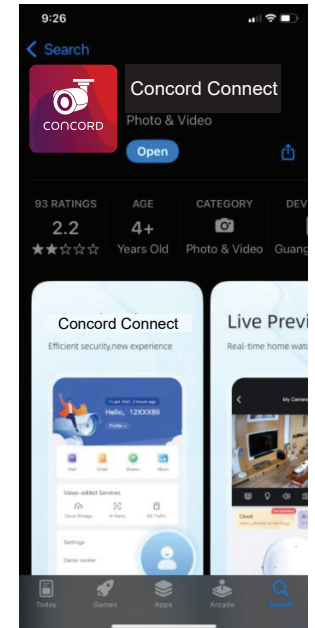
2. Select 'Get' on Concord Connect to download the app.



3. Double-click the side button on your device to confirm the download.

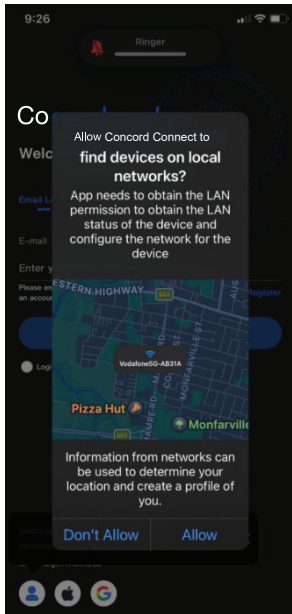


4. Select 'Open' to continue.

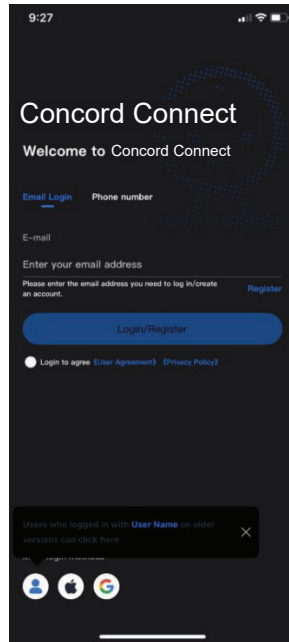


Setting Up Your iOS Device for Mobile Viewing

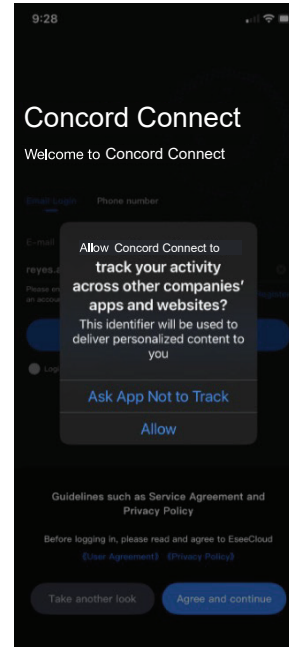
5. Select 'Allow' to find devices on local networks.



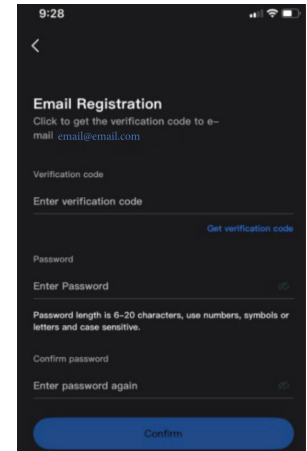
6. Select 'Register' to create your account by entering your email and setting up your password.



7. You may choose to select 'Agree' or 'Ask App Not to Track' to continue.

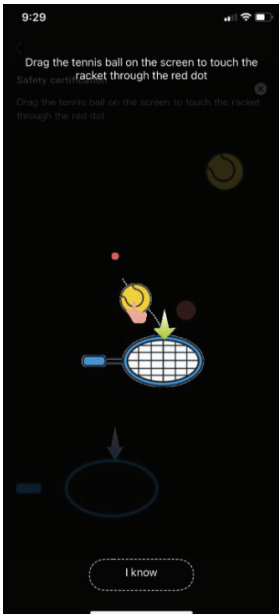


8. Key in your email address and select 'Get verification code'.

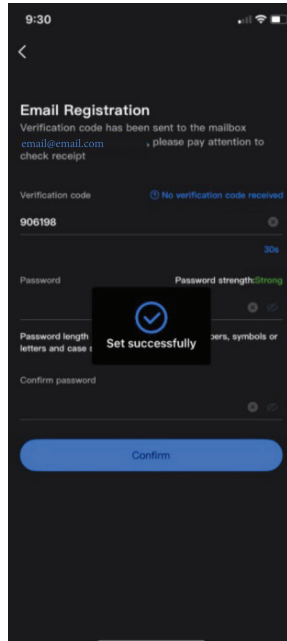


Setting Up Your iOS Device for Mobile Viewing

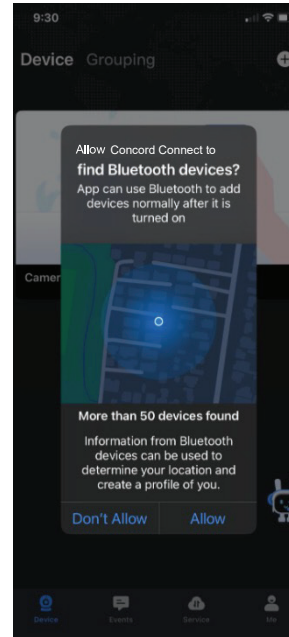
9. Follow the instructions then select 'I know' to continue.



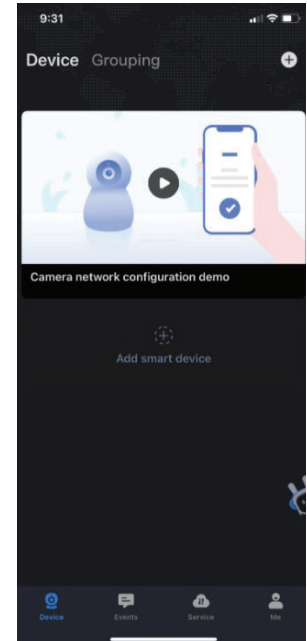
10. Key in the code from your email then set up your password.



11. Select 'Allow' to continue.

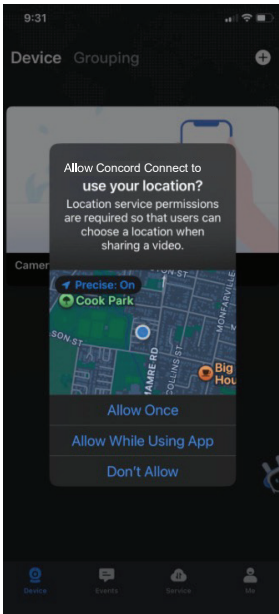


12. Select 'Add smart device' to pair with the NVR

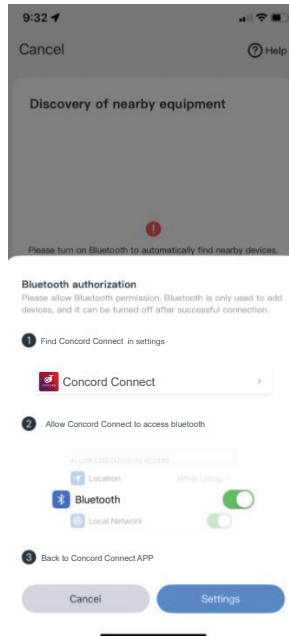


Setting Up Your iOS Device for Mobile Viewing

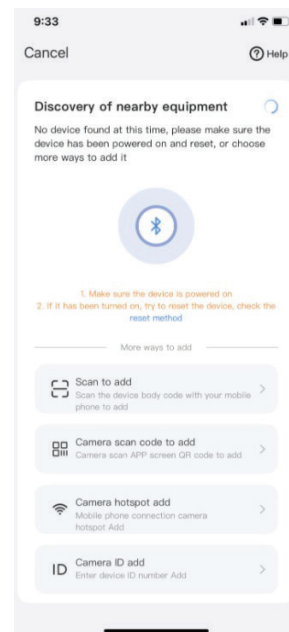
13. Select 'Allow while using the App' to continue.



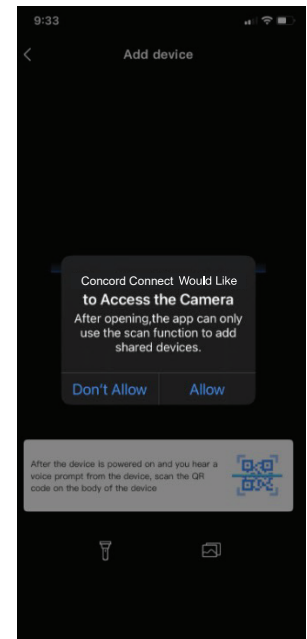
14. Select 'Settings' to continue.



15. Select 'Scan to add' to continue.

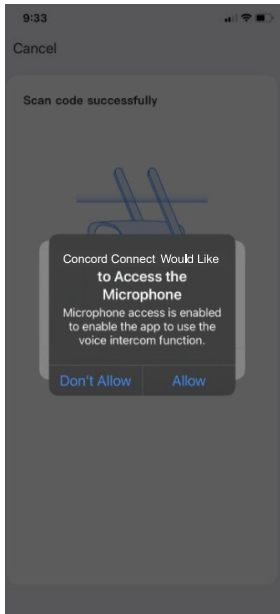


16. Select 'Allow' so you can scan the QR code on your NVR screen.

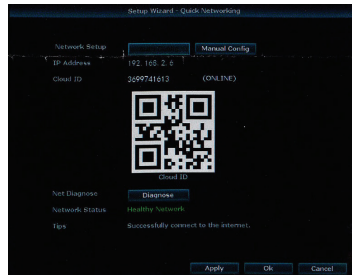


Setting Up Your iOS Device for Mobile Viewing

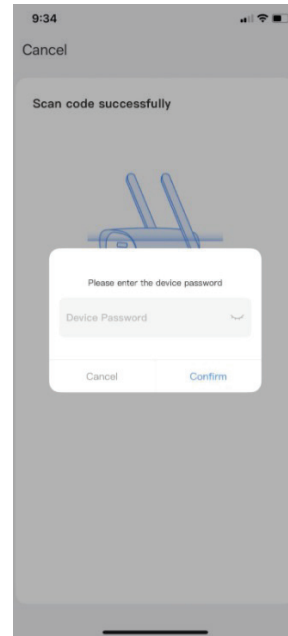
17. Select 'Allow' to enable the microphone on your smart phone.



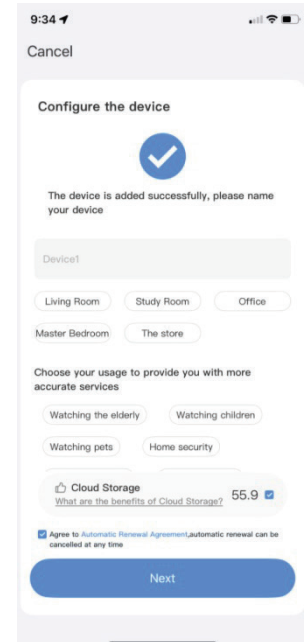
18. Go to Setup Wizard on your monitor to scan the QR code from your smartphone.



19. Key in your NVR password to pair with the device.

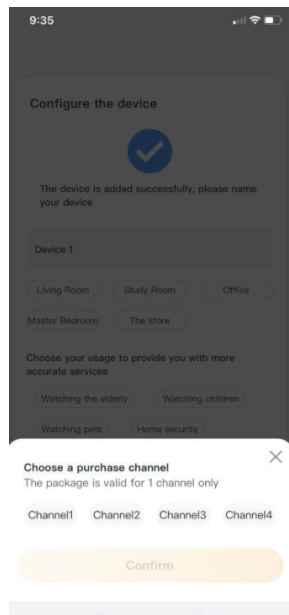


20. After successfully adding the device, select 'Next' to continue.

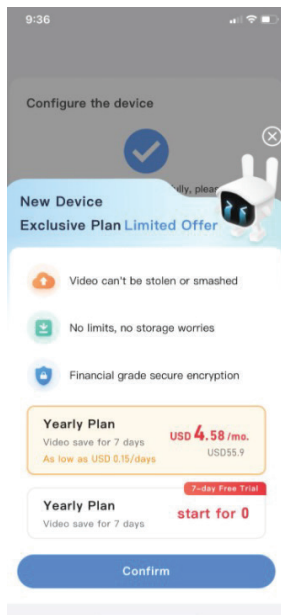


Setting Up Your iOS Device for Mobile Viewing

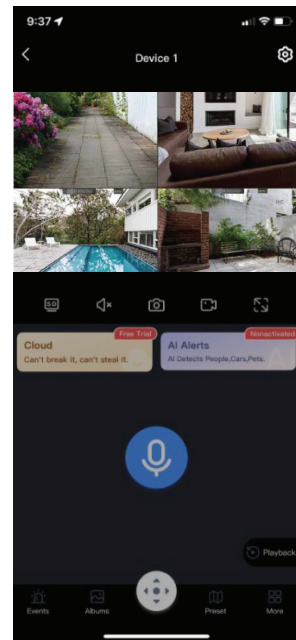
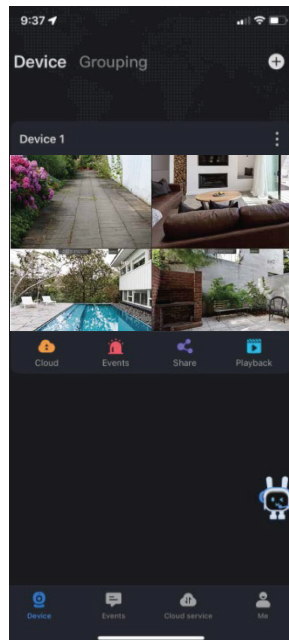
21. Select the maximum number of channels for your NVR (4 or 8 channels)



22. Select 'X' on the right top corner if you do not wish to add any plans.



23. Your NVR has now been successfully paired with your smartphone for Mobile View.



Advanced Setup

Please visit our website www.concordconnect.com.au and download the full product manual, it can be found on the download tab of the product page for your model. The manual will show you how to do the following:

- Connect your NVR to the internet
- Camera channel configuration
- Recording configuration
- System configuration
- Access your NVR via the Concord Connect App
- And many other features to help you get the most out of your CCTV system

Additional cameras, cables and accessories are available from your Concord reseller.

Concord Connect Support:
1300 762 627



WARNING – KEEP BUTTON BATTERIES OUT OF REACH OF CHILDREN

- If swallowed a lithium button battery may lead to serious or fatal injury in as little as 2 hours, due to chemical burns and potential perforation of the oesophagus
- All button batteries must be kept away from children regardless if they are new or used.
- If you suspect your child has swallowed or inserted a button battery immediately call the 24-hour Poisons Information Centre on 13 11 26 (Australia) or 0800 764 766 (New Zealand) for fast, expert advice.
- If your child is having difficulty breathing contact 000 (Australia) or 111 (New Zealand).
- Dispose of used button batteries immediately and safely out of the reach of children. A battery can still be dangerous even when it can no longer operate the device.
- As soon as you have finished using a button battery, put sticky tape around both sides of it. This will make it harder for children to swallow the button battery and avoid the risk of the battery catching fire.
- Immediately dispose of button batteries immediately out of reach of children, or recycle using a child resistant container and take used cells to your local battery collection centre.

CONCORD

www.concordconnect.com.au