



# CONCORD

CONNECTING TOGETHER

**DVR QUICK  
START GUIDE**



# What's in the box?

Congratulations on your new Concord Professional Surveillance System. Inside the box you will find everything you need to connect your DVR and cameras to your TV or monitor.



DVR Recorder Unit



Cameras (2)



HDMI cable



Ethernet Cable



USB Mouse



Mounting accessories



Camera cable (2)



12V Power Supply with Adapters

# Getting to know your DVR

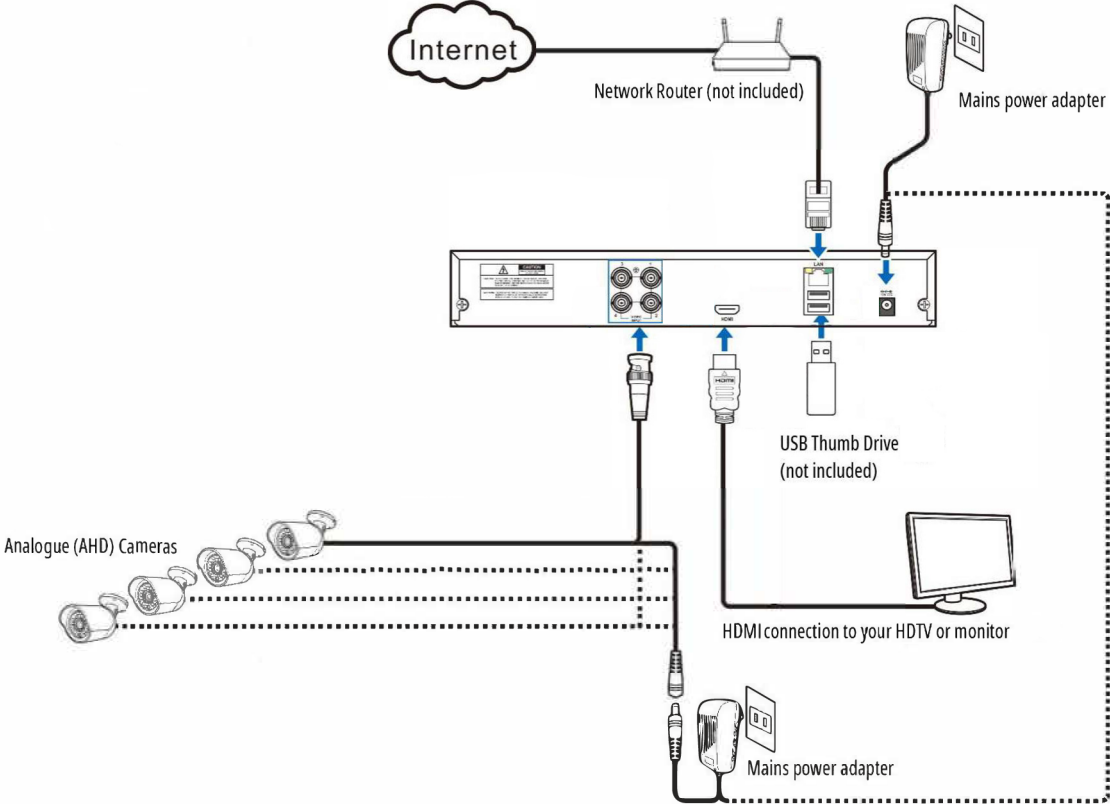


1	Camera Ports	BNC video inputs.
2	Connect Monitor	Connect to your TV or monitor screen.
3	Reset Button	Manual reset button for unit.
4	USB Port	USB port for mouse or thumb drive to share videos.
5	WAN Port	Connect to your network router using the supplied RJ45 Ethernet cable.
6	Power Input	Follow instructions in Step 1 to connect power.

## ! NOTE

*This guide assumes a minimal standard installation using only the out-of-box cables and mounting aids. You will need to consider your specific installation needs, such as distance between the DVR and cameras or Internet router. You may need additional cables and/or equipment for your specific situation.*

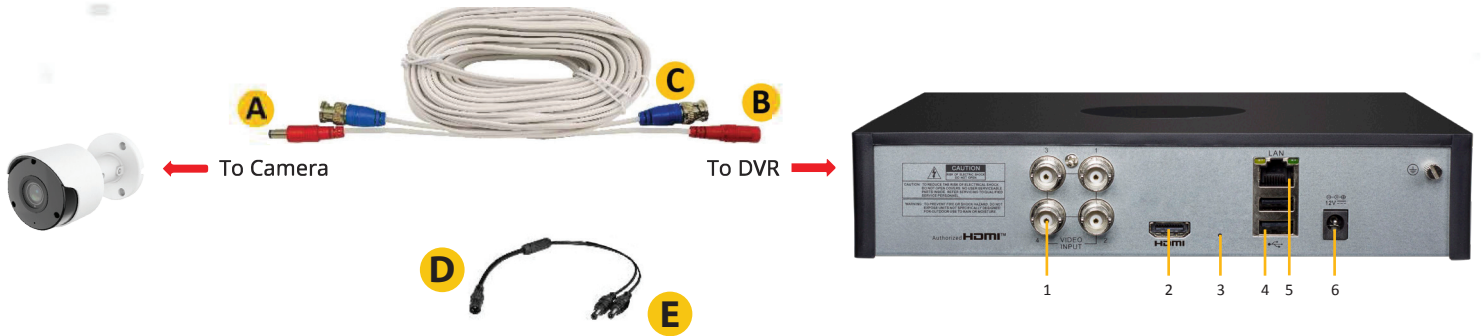
# How to connect your DVR



Please Note: This is a generic diagram and your DVR and camera equipment may have a different appearance to the images above.

Comes with a single mains power adapter which supplies power to the cameras and the DVR.

# Easy 5 Step guide



## STEP 1: Connect your cameras and power

- I. Connect **A** (male) to camera (female).
- II. Connect **B** to **E**.
- III. Connect **C** to **1**.
- IV. Locate the separate power supply and connect to **6**.
- V. Plug the power supply to the plug **D**.

**IMPORTANT  
INFORMATION**

- We strongly recommend you connect all cameras and cables and check they are communicating and can be seen on your monitor before permanent installation.
- Please make sure you have the power leads correctly aligned so the red socket **B** is going to the DVR / power adapter and red plug **A** is going to the camera.

# Easy 5 Step guide

## STEP 2: Connect a display

Connect a TV or monitor to the DVR ②\* using the HDMI cable.

## STEP 3: Connect USB mouse:

Connect the supplied USB mouse to the DVR USB port located on the back ④

## STEP 4: Powering up your device

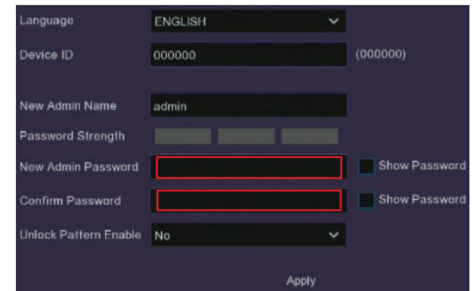
Your DVR will be on once you connector the power adaptor to the power socket ⑥ and mains power. Check the power indicator light on the front of the DVR is on.

## STEP 5: Create a Password

The password needs to be a minimum of six characters containing numbers or letters. Ensure you use a password that you are familiar with, but is not easily known to others.

**ATTENTION!** Be sure to record your login credentials and keep in a secure location. If you forget your password you will need to reset the DVR password using your email. Please ensure to set up your email from the DVR Remote viewing and email manual or download the Full Product Manual on the Concord website [concordconnect.com.au](http://concordconnect.com.au).

Write your password down here and store it in a safe place.



The screenshot shows a configuration menu with the following fields and options:

- Language: ENGLISH (dropdown)
- Device ID: 000000 (000000)
- New Admin Name: admin
- Password Strength: [Progress bar]
- New Admin Password: [Redacted field] [Show Password]
- Confirm Password: [Redacted field] [Show Password]
- Unlock Pattern Enable: No (dropdown)
- Apply button at the bottom right.

# Setup Wizard

## Configuring your device using the Wizard

The Start-up Wizard automatically runs the first time you power up the DVR, however it is not necessary to run the wizard to get started. The wizard will guide you through customising the network and date and time setup, as well as IP camera, storage and screen resolution configuration. You will also find the QR code to setup the mobile app. All these settings can be changed in the Setup menu later.

**If you are happy to stick with the default settings you can cancel the Setup Wizard by clicking  at the top right of the pop up.**

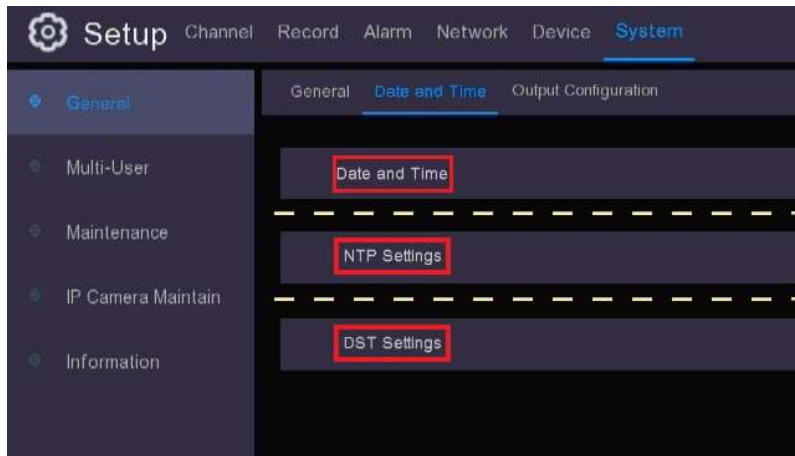


## Configuring Date and Time Manually

If you cancel the wizard, you will need to set up the date and time manually by opening the menu (bottom left corner), click Setup → System → General → Date & Time, change to suit your time zone.

In this menu you can setup the date and time manually using settings under **Date and Time** or ticking "Enable NTP" under **NTP Settings** to use the Network Time Protocol which automatically sets the time through your router.

You can also use **DST Settings** to set Daylight Savings Time for your region.

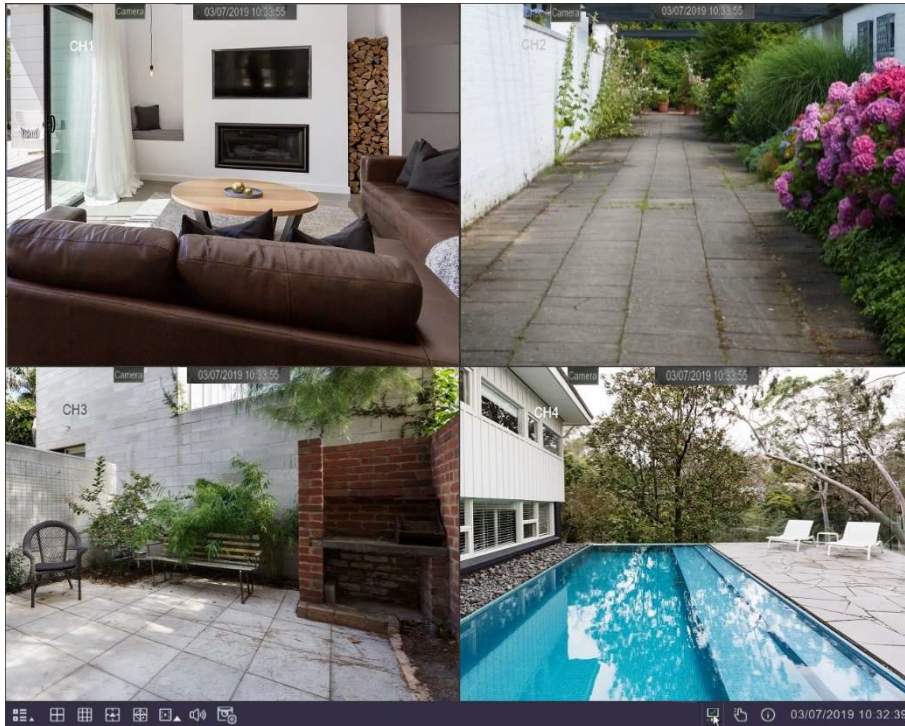




# Setup Complete


## ALL BASIC CONFIGURATIONS ARE NOW COMPLETE

Your HDTV or monitor should have vision from all connected cameras



# Advanced Setup

Please visit our website [www.concord.support](http://www.concord.support) and download the Full Product Manual which can be found on the download tab of the product page for your model. The manual will show you how to do the following:

- Connect your DVR to the internet
- Camera channel configuration
- Recording configuration
- System configuration
- Access your DVR via the Concord Security App 
- And many other features to help you get the most out of your CCTV system

Please refer to the Mobile/App Quick start guide for setting up email alerts & access to your DVR via the Concord App.

Additional cameras, cables and accessories are available from your Concord reseller.

For Concord Surveillance Support and Product Registration visit:

[www.concordconnect.com.au/support](http://www.concordconnect.com.au/support)  
[www.concordconnect.com.au/register](http://www.concordconnect.com.au/register)

NB: This unit is not compatible with the Concord Wi-Fi Dongle



## WARNING – KEEP BUTTON BATTERIES OUT OF REACH OF CHILDREN

- If swallowed a lithium button battery may lead to serious or fatal injury in as little as 2 hours, due to chemical burns and potential perforation of the oesophagus
- All button batteries must be kept away from children regardless if they are new or used.
- If you suspect your child has swallowed or inserted a button battery immediately call the 24-hour Poisons Information Centre on 13 11 26 (Australia) or 0800 764 766 (New Zealand) for fast, expert advice.
- If your child is having difficulty breathing contact 000 (Australia) or 111 (New Zealand).
- Dispose of used button batteries immediately and safely out of the reach of children. A battery can still be dangerous even when it can no longer operate the device.
- As soon as you have finished using a button battery, put sticky tape around both sides of it. This will make it harder for children to swallow the button battery and avoid the risk of the battery catching fire.
- Immediately dispose of button batteries immediately out of reach of children, or recycle using a child resistant container and take used cells to your local battery collection centre.



# CONCORD

[www.concordconnect.com.au](http://www.concordconnect.com.au)