

RESPONSE

# 4K Dash Camera with GPS



QV3882

## Instruction Manual

## CONTENTS

Before First Use .....	2
Safety .....	3
Box Contents .....	3
Product Diagram .....	4
In Vehicle Installation .....	8
Functions .....	9
Troubleshooting .....	12
Specifications .....	15
Warranty Information .....	16

## BEFORE FIRST USE

- Prior to using your product, please read all the safety and operating instructions thoroughly. Please ensure you follow the steps below before using the product. We recommend you keep the original packaging for storing the product when not in use.
- Find a safe and convenient place to keep this instruction manual for future reference.
- Unpack the product but keep all packaging materials until you have made sure your new product is undamaged and in good working order. Ensure you have all accessories listed in this manual.

## SAFETY

- To prevent damage it is recommended to store the unit out of sunlight when not in use.
- Do not leave the dash camera exposed to heat or in a high temperature environment such as an unattended car in direct sunlight.
- Do not immerse or expose the dash camera to rain, water, humidity or other liquids.
- The dash camera is designed for use indoors/inside the vehicle
- Before using the dash camera it is recommended to check your local and state laws where you intend to use the device. Laws may prohibit or restrict where/ what can be placed on your windshield.
- Do not dispose of in fire. Check with local authorities on the disposal of lithium battery products

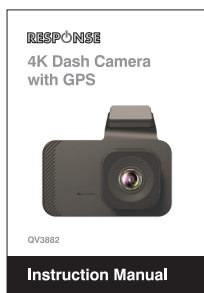
## BOX CONTENTS



1 x Dash Camera



1x 12v Power Adapter



1 x User Manual

## PRODUCT DIAGRAM



Feature		Description
1	3M Adhesive Mount	Adhesive mount to attach to windscreen
2	Rear Camera Port	AV Port for rear camera - Not Available
3	Power Interface	USB-C Port for power supply
4	Monitor	3" HD IPS Display
5	Lens	Align towards windscreen
6	Speaker	For audio Playback
7	Micro SD Slot	Supports Micro SD Cards up to 128GB Max. Due to high resolution it is recommended to use a Class 10 High Speed Micro SD Card
8	Microphones	For audio recording
9	Reset Button	In the case that the machine is dead and cannot be switched on and off normally, press the reset button to reset the machine. Press the [Power button] again to reboot the machine.

Feature		Description
10	Menu Button	<p>Function 1: Menu Functions</p> <p>In the power-on state, short press the [M button] to enter the menu function setting table, the</p> <p>Function 2: ADAS Setting Function</p> <p>In the AI interface, short press [M button] to enter ADAS menu setting</p> <ul style="list-style-type: none"> <li>• Forward collision warning</li> <li>• Lane departure warning</li> <li>• Pedestrian collision warning</li> <li>• Starting in front of the vehicle</li> <li>• Virtual bumpers</li> <li>• Calibration</li> <li>• Units of speed per hour</li> </ul>
11	Left Button	<p>Function 1: Flip function</p> <p>Short press for the Move Left option in the primary menu, and short press for the Flip Up option in the secondary menu. In the playback screen, short press [Left Button] to view the previous video/photo.</p> <p>Function 2: Picture-in-Picture Function</p> <p>During recording, short press [Left Button] to switch the Picture-in-Picture function.</p>
12	Power Button	<p>Function 1: Switching function</p> <p>In the off state, long press [Power button] can turn on the power of the machine, the machine automatically start to work. Long press [Power Button] and hold it for 3 seconds in power-on state, the unit will automatically save the video file and user settings and shut down.</p> <p>Function 2: Mode switching</p> <p>When the machine is in working condition, short press [Power Button], the machine will switch between AI interface, video interface and playback interface.</p>
13	Right Button	<p>Function 1: Flip function</p> <p>Short press for the Move Right option in the primary menu, and short press for the Scroll Down option in the secondary menu. In the playback screen, short press [Right Button] to view the next video/photo. In the video recording interface, short press the [Right Button] one-key mute function</p>
14	OK Button	<p>Function 1: Activate/Deactivate the video recording function</p> <p>In video mode, short press [Video Key] to start recording, short press [Video Key] again to stop recording.</p> <p>Function 2: Photo button</p> <p>In the photo mode, press [Photo Button] briefly to take a photo.</p> <p>Function 3: Video Playback Key</p> <p>In file browsing mode, press [Confirm] briefly to play or pause the video.</p>
15	Indicator LED	Indicates when unit is recording

## **Power button**

Function 1: Switching function

In the off state, long press [Power button] can turn on the power of the machine, the machine automatically start to work.

Long press [Power Button] and hold it for 3 seconds in power-on state, the unit will automatically save the video file and user settings and shut down.

Function 2: Mode switching

When the machine is in working condition, short press [Power Button], the machine will switch between AI interface, video interface and playback interface.

## **OK button**

Function 1: Activate/Deactivate the video recording function

In video mode, short press [Video Key] to start recording, short press [Video Key] again to stop recording.

Function 2: Photo button

In the photo mode, press [Photo Button] briefly to take a photo.

Function 3: Video Playback Key

In file browsing mode, press [Confirm] briefly to play or pause the video.

## **Left button**

Function 1: Flip function

Short press for the Move Left option in the primary menu, and short press for the Flip Up option in the secondary menu.

In the playback screen, short press [Left Button] to view the previous video/photo.

Function 2: Picture-in-Picture Function

During recording, short press [Left Button] to switch the Picture-in-Picture function.

## **Right button**

Function 1: Flip function

Short press for the Move Right option in the primary menu, and short press for the Scroll Down option in the secondary menu.

In the playback screen, short press [Right Button] to view the next video/photo.

In the video recording interface, short press the [Right Button] one-key mute function

## **Menu button**

### **Function 1: Menu Functions**

In the power-on state, short press the [M button] to enter the menu function setting table, the

### **Function 2: ADAS Setting Function**

In the AI interface, short press [M button] to enter ADAS menu setting

- Forward collision warning
- Lane departure warning
- Pedestrian collision warning
- Starting in front of the vehicle
- Virtual bumpers
- Calibration
- Units of speed per hour

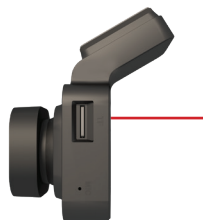
## **Reset button**

In the case that the machine is dead and cannot be switched on and off normally, press the reset button to reset the machine. Press the [Power button] again to reboot the machine.

## IN VEHICLE INSTALLATION

### 1. Insert MicroSD Card

Insert a suitable MicroSD card (Class 10) in to the dash camera, taking care that the gold contacts are facing towards the LCD screen side. Push the memory card until it clicks into place.



**NOTE:** Use the edge of a small object to push the memory card in place if required. Take care that card has 'clicked' into place, a second push inwards will release the memory card. Do not remove or insert the memory card when the dash camera is turned on. This may damage the memory card.

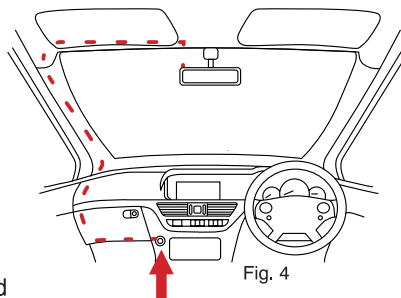
### 2. Connect car power cable

Connect the supplied power cable to the dash camera's USB port.

### 3. Plug the power cable into the 12-24VDC outlet of your vehicle

The dash camera will automatically power on and start recording once power is available. In some vehicles this will be when connections are made, for others the dash camera will power on once the ignition has been turned on. Route the power cable around the windshield to the 12-24VDC socket, ensuring that your view is not obstructed (refer Fig. 4), and that the cable is not a distraction.

**NOTE:** Do NOT wire the dash camera directly to a power source by cutting the cigarette plug off the end of the cable, or permanent damage will result



### 4. Straighten the dash camera

Ensure that the dash camera is horizontal and faces straight out of the windscreen. Ensure that objects on the dash camera display appear level, and adjust as required.

### 5. Attach the dash camera to the windscreen

When you are satisfied with the placement and orientation of the dash camera, firmly place the mount on the windscreen.



## FUNCTIONS

### Video

Insert the TF card to access the external power on, the machine will automatically record, the video indicator light will flash, the screen recording status will show red font, from 00:00:00, press [Confirm] to stop recording.

### Video Playback

In the power-on state, short press the [Power off button] to enter the video playback mode.

### Gravity sensing

This machine has a built-in collision sensor (G-sensor), if a vehicle collision occurs, the recorder will lock the accident when this break video saved as a special image, while the display shows the lock icon in the middle of the display. The locked image will not be overwritten by the loop. Note: The G-sensor supports sensitivity adjustment, you can change the setting in the setting menu according to the actual need.

### Loop recording

This product can cover the cycle of video recording and do not miss a second, you can set the cycle of the way in the video menu, such as setting the range: off / 1 minute / 2 points.

There are five steps: clock, 3 minutes, 5 minutes.

### Audio recording

Turn off and on of the video audio

### Date/time setting

Short press [M button] to enter the system setup menu in the power-on state, short press [Left button] / [Right button] to select the setup date/time option. Short press [OK button] to enter the menu settings can be.

**NOTE:** In order to effectively record the date and time of forensic evidence of driving safety accidents, please set the correct time before using this machine.

## Power charging

The charging icon is displayed on the top right of the screen when plugged into an external power source, indicating that the battery is being charged, and the charging icon will keep flashing while the machine is in operation.

## Timer Screen Off

Can automatically turn off the display, so that the product works at very low power consumption; in the system menu "Screen Saver" in the "off, 1 minute, 3 minutes, 5 minutes" four modes can be selected, such as: select "3 minutes For example, "3 minutes" means that it will enter the power saving mode and turn off the display after three minutes of power on. The default is off.

## Introduction to the Function Menu

Resolution	Setting video clarity	4K 3840*2144 30FPS
Loop video	Setting the length of each video file	1 minute/ 2 minutes/ 3 minutes
Video and audio recording	When recording a video file, you can choose to turn the recording sound on or off;	On/ off
Date stamp	When turned on, the video files shot will have a corresponding date/time watermark inside;	On/ off
G-sensor	In the process of driving, the body is subjected to external forces to produce vibration, the car recorder will automatically lock the current recording video	Closed/ low/ medium/ high
Parking monitoring	After parking the engine off, the body if you receive external forces generated by the vibration, the car recorder will turn on the camera	On/ off
Time/date	Current date and time can be set	Settable: year/ month/ day/ hour/ minute/ second
Automatic shutdown	When the machine is in standby mode, without manual operation, the machine will automatically shut down within the set relative time.	1 minute/ 3 minutes/ 5 minutes/ off
Screensaver	Setting the automatic screen-off time	30 seconds/ 1 minute/ 3 minutes/ off

Keypad sound	Setting machine key tones	On/ off
Language Settings	Machine default language can be set	English/Traditional Chinese/Simplified Chinese/Japanese/Portuguese/Russian/Italian/French/German/Spanish
Light source frequency	Default is 50HZ	50HZ/ 60HZ
Formatting	Formatting the TF card	Confirmation/ Cancellation
Default setting	Restore system default settings	Confirmation/ Cancellation
Version	Displays the current version number of the machine	

## TROUBLESHOOTING

Problem	Solution
<b>Storage</b>	
Unable to take photos or videos	Check if the Micro SD card has sufficient space and is locked.
When recording, it will automatically stop	Due to the huge amount of high-definition video data, please use a high-speed Micro SD card compatible with SDHC. It is recommended to use a Class10 or higher high-speed card;
When playing back images and videos, there is a "file error" prompt	An error occurred while storing data on the Micro SD card, resulting in incomplete files. Please use the camera's "format" function to reformat the Micro SD card.
I can only record a few minutes of video on my MicroSD card	Change the recording size (Video Length function) to a smaller size. Increase the size of the MicroSD card. Max 128GB.
I get the message "SD Card Error" on screen	The SD card has become unusable by the dash camera. Back up useful files to your PC and then Format your SD card from within the dash camera setup menu
I get the message "Card Full" on screen	The SD card has become full as there are too many protected files which cannot be deleted to allow for further recording to take place. Transfer useful files to your PC and delete unnecessary files, or Format the SD card from within the dash camera setup menu.
<b>Image</b>	
The captured image is not clear	Please check the lens for any dirt or finger marks and wipe the lens clean before shooting.
When shooting scenes such as the sky and water, the image is very dark	In high contrast scenes, the automatic exposure function of the camera can be affected, this can be corrected by adjusting the "EV" value in the machine settings menu.
Under cloudy days and indoor light sources, the color performance is not perfect enough	Please check if the machine's "white balance" function is set to automatic.
Horizontal stripe interference in the image	This is caused by setting the wrong 'light source frequency'. Please set it to '50Hz' or '60Hz' based on the local power supply frequency.
System Freeze/ Crash	After the machine crashes, please briefly press the reset button to restore and restart.

Problem	Solution
<b>Power</b>	
My dash camera shuts down by itself after a while	Either the battery has gone flat, there is no power to the dash camera and the Auto Power Off period has been triggered or Parking Mode has been turned on and no vehicle movement has been detected for 5 minutes.
The screen blanks after a few minutes upon my dash camera	The screen saver is set to ON. Change settings to OFF if required. Default setting is OFF
<b>Playback</b>	
Video Files cannot be played on my computer	The video files from the dash camera are in .MP4 format and may not be compatible with your PC if suitable playback software is not installed
Video File playback is jumpy	Remove the SD card and format to remove non-contiguous files. For best recording use a branded class 10 type (48MB/s) or UHS type 1 micro SD card of 8 to 128GB recommended size. PC may not be sufficient for the playback task, try a different PC. Copy the recorded video files onto the PC / Mac for playback directly rather than use the dash camera as a card reader, as the USB system on your PC may be too slow for HD video playback.
The sound is not synchronised with video during playback	The Codecs upon your PC may not be compatible or the latest standard.
Video has no sound	Ensure that 'Record Audio' setting is turned ON within the Video Menu
I can't delete files on my SD card within the dash camera	Check to see if these files are 'protected'. If so please follow instructions to 'un-protect'.
The battery will not charge	Ensure the dash camera is connected to a reliable power source and that the supplied Car Power Cable is being used, with the blue LED lit
The battery only lasts 30 seconds	The battery will only receive charge when the dash camera is connected to a power source, Charging takes approximately 2 hours and a full charge is indicated when the blue LED on the dash camera goes out. To charge, take the dash camera indoors and charge it for 2 hours; once fully charged, check to see if the problem persists. If it persists, the car power supply may be causing the issue
The battery only lasts 10 - 15 minutes	This is normal, the battery design allows the 'Auto Power Off' feature to function in event of power loss within the vehicle. It is not intended as an alternative power source to replace the supplied car adaptor.

Problem	Solution
<b>Other</b>	
I have turned on 'Parking Mode' and now can't stop the recording	The dash camera will start a recording whenever motion is detected. To turn off Parking Mode firstly shutdown the dash camera and remove the SD card, this will avoid recording being activated accidentally. Switch the dash camera On and within the Setup Menu, turn off the 'Parking Mode'.
When I press the Menu button nothing happens	This is normal during recording. Stop the recording before pressing the MENU button. If recording re-starts before you can press MENU, then see the Parking Mode section above.
My Camera feels warm when it is operating	It is normal for the camera to feel warm during typical use, especially when it's recording high definition video.
Unresolved Issues	Reset the dash camera to the default settings within the Setup Menu and try again. Should the problem persist call your local support centre.

## SPECIFICATIONS

<b>FOV</b>	140°
<b>Video Resolution</b>	3840 x 2160 @ 30FPS 2160 x 1440 @ 30FPS 1920 x 1080 @ 30FPS
<b>Channels</b>	1
<b>G-Sensor</b>	True
<b>GPS</b>	True – Speed and Location
<b>Storage</b>	Micro SD 128GB Max
<b>Screen</b>	3.0" IPS
<b>Connection</b>	USB Type-C
<b>Battery</b>	Super Capacitor
<b>Dimensions</b>	90 (W) x 54 (H) x 35mm (D)
<b>Weight</b>	57g
<b>Parking Monitoring</b>	Supported
<b>Audio Playback</b>	Supported
<b>Current Frequency</b>	50HZ/60HZ
<b>USB Function</b>	N/A
<b>Power Interface</b>	USB-C 5V 1A

## WARRANTY INFORMATION

Our product is guaranteed to be free from manufacturing defects for a period of 12 Months.

If your product becomes defective during this period, Electus Distribution will repair, replace, or refund where a product is faulty; or not fit for intended purpose.

This warranty will not cover modified product; misuse or abuse of the product contrary to user instructions or packaging label; change of mind and normal wear and tear.

Our goods come with guarantees that cannot be excluded under the Australian Consumer Law. You are entitled to a replacement or refund for a major failure and for compensation for any other reasonably foreseeable loss or damage. You are also entitled to have the goods repaired or replaced if the goods fail to be of acceptable quality and failure does not amount to a major failure.

To claim warranty, please contact the place of purchase. You will need to show receipt or other proof of purchase. Additional information may be required to process your claim.

Any expenses relating to the return of your product to the store will normally have to be paid by you.

The benefits to the customer given by this warranty are in addition to other rights and remedies of the Australian Consumer Law in relation to the goods or services to which this warranty relates.

This warranty is provided by:

Electus Distribution

Address 46 Eastern Creek Drive, Eastern Creek NSW 2766

Ph. 1300 738 555