

CONCORD

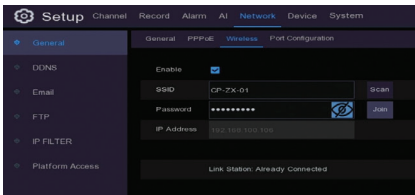
WiFi USB Dongle

for DVRs & NVRs

QC5000

Please disconnect the Ethernet cable from your DVR/NVR.

1. Connect the USB Wi-Fi Dongle to a spare USB port on your DVR/NVR.
2. Right-click the mouse in Live-View mode to display the Menu Bar. Click “Setup”, then click “Network” then click “Wireless”.

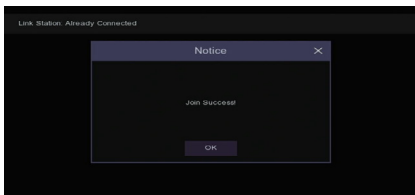


3. Click the “Scan” button. A list of Wi-Fi networks that your device detects will be shown. Select your Wi-Fi network, then click the “Save” button.
4. Enter the password for your Wi-Fi network, then click the “Connect” button. Make sure the password is correct before proceeding (click the eye icon to display the password).

Please turn over for more instructions >

5. TheDVR/NVR will connect to your Wi-Fi network. Click “OK” to continue (if the connection has failed, check that the password is correct).
6. The Link Status will change to Connected, indicating a successful connection. Click “Apply” to save the settings.

If the Wi-Fi dongle needs to be removed, click the “USB Wi-Fi” button on the Menu Bar (next to the date & time), then click “Safely remove USB Devices”.



Note: Ensure the latest version of Concord software is installed prior to use.

Distributed by:
Electus Distribution Pty. Ltd.
320 Victoria Rd, Rydalmere NSW 2116 Australia
Ph: 1300 762 627 Fax: 1300 738 500

Made in China