

**digitech**

# 2K Smart Pan Tilt Zoom Baby Camera



Model:  
**QC3909**



R-NZ

Please read and save all instructions to ensure safe and effective use of this product.

# Instruction Manual

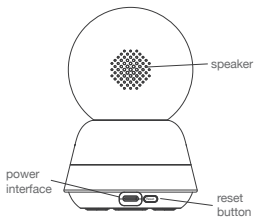
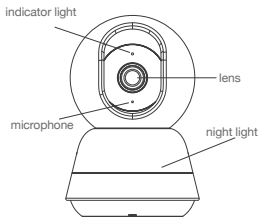
## WARNINGS & SAFETY INFORMATION

1. This product is not a substitute for adult supervision.
2. This product must be placed out of reach of infants and kept at least 1.5-2 meters away from the infant to ensure that the infant has sufficient safety range with this product.
3. Do not place the USB power cord where the baby can reach, so as not to wrap around the child's body and cause safety problems.
4. This product is not a toy and children are not allowed to play with it.
5. Please use the matching adapter with a power output of 5V and 1A.

## Product Appearance



# PRODUCT OVERVIEW



# SPECIFICATIONS

Product Name: Baby Monitor
Pixels: 4MP
Video compression: H.265 High Profile
Image Enhancement: Digital Wide Dynamic 3D Noise Reduction
Alternating current: 100~240V
Wireless encryption: WEP/WPA/WPA2 encryption
Baby Monitor power consumption: <4W
Local storage: Micro SD card (SD card not included)
Wireless connections: 2.4G 802.11 b/g/n
Support platform: Android/iOS

## Parts description

- ◆ Press and hold the reset button (Reset) for about 5 seconds. When you hear the prompt, indicating that the reset is successful.
- ◆ It is recommended to insert an 8-256GB high-speed Micro TF card, otherwise important functions such as storing, viewing historical videos, and firmware upgrades will not be supported
- ◆ Packing list: Smart life camera × 1, instruction manual × 1, Power cord × 1, Adapter × 1, Headwear × 1

## APP Installation

- ◆ Download the APP: Scan Smart Life APP below and complete the installation.
- ◆ Register and log in: Open the Smart Life APP and follow the prompts to register and log in.



# APP USAGE INSTRUCTIONS

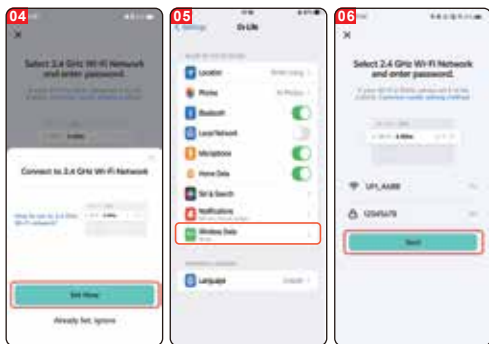
## Add device-scan QR code

- ◆ Please make sure there is available Wi-Fi and an Internet connection.
- ◆ Find the power cord interface of the device and insert the power cord, turn on the baby monitor, and the device starts to work.
- ◆ Open the Smart Life APP, click "Add Device" on the home page (image 01); select "Camera&Lock", click "Indoor PTZ camera (Wi-Fi)" (image 02) to add camera; then click "Next" (image 03);

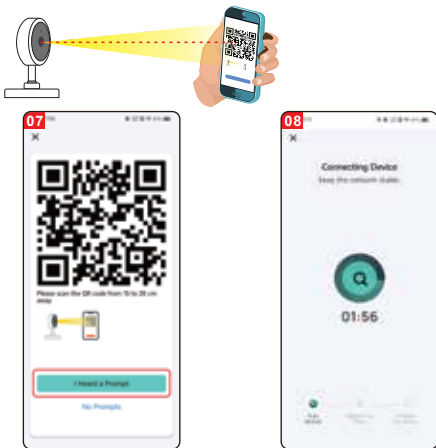


## Attention: Only support 2.4G Wi-Fi network;

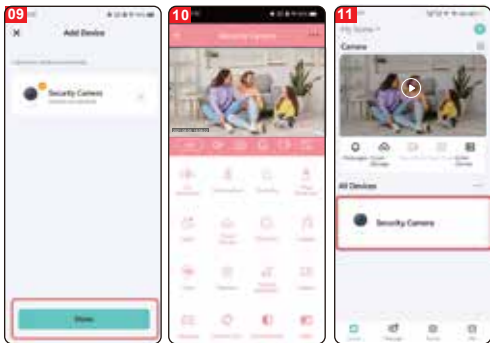
- ◆ If the phone is not connected to Wi-Fi, please click "Set Now"  
(image 04);
- ◆ The interface jumps to the permission setting interface and turns on Wireless Data (image 05)
- ◆ If the phone is connected to Wi-Fi (image 06), click "Next";



- ◆ The APP will generate a QR code, point the QR code at the camera lens (the camera is about 20-30cm away from phone), and click "I Heard a Prompt" (image 07);
- ◆ The device is connecting (image 08). Long press the multifunctional button on the camera for 1 to 9 seconds. There will be a "beep" prompt sound, and then it will enter the network configuration state;



- ◆ Complete the connection (image 09), click "Done";
- ◆ The interface jumps to the device preview interface (image 10)
- ◆ After closing the device preview interface, the interface returns to the APP homepage. At this time, the connected device will appear on the APP homepage (image 11). You can directly click to enter the device interface to view the monitoring status.





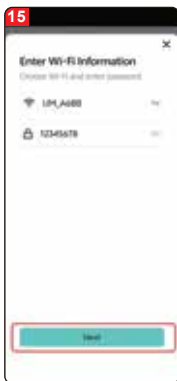
# Add device-Bluetooth Pairing

- ◆ Turn on “Bluetooth” (image 12)
- ◆ Click the icon in the upper right corner (image 13)
- ◆ Click to add (image 14)



◆ Connect to wifi and click "Next" (image 15)

◆ The page jumps to Add Device (image 16)



- ◆ It shows that the addition is successful, click "Done" (image 17)
- ◆ The page jumps to the phone monitor (image 18)



# FUNCTIONS



**Cry Detection:** After turning on cry detection, if the device detects a baby crying, it will send a notification to the mobile phone;



**Temperature:** In the temperature settings interface, users can switch the temperature unit between Celsius and Fahrenheit. Users can also set low and high temperature alarms. After the temperature alarm is turned on, if the ambient temperature of the device is lower or higher than the set temperature, the camera will push an alarm notification to users through the app;



**Humidity:** In the humidity settings interface, users can set alarms for high and low humidity. When the humidity alarm is turned on, when the ambient humidity is lower or higher than the set humidity threshold, the camera will send an alarm notification to users through the app;



**Feeding Reminder:** Users can set feeding time, and when it is time to feed, the app will send a notification to remind users to feed their babies;



**Light:** Users can manually turn the camera's light on and off in real time, or users can also set a schedule for the light to automatically turn on and off;



**Cloud Storage:** After activating cloud storage, users can access video playback even if the TF card is not inserted into the device;



**Direction:** Users can control the direction of the PTZ (Pan-Tilt-Zoom), and zoom in or out of the video preview;



**Lullaby:** The device is equipped with seven lullabies. The lullaby settings interface allows users to adjust the volume, select the playback order, and switch or pause the lullabies;



**Soothing Sound:** Click the soothing sound button to start recording(up to 10 seconds).After 10s, the device will automatically stop recording. During the recording,users can also manually click the button to stop recording; when users turn on the crying detection function and detect crying, the device will automatically play the soothing sound;



**Playback:** Users can watch video playback (TF card required)



**Photo Album:** Users can view screenshots and videos;



**Messages:** In the message settings interface, users see the messages pushed by the device;



Theme Colour Setting: You can switch the theme colour;



Privacy Mode: After turning on this function, the camera stops all work. After turning off this function, the camera resumes normal operation;



WDR(Wide Dynamic Range): Adjust the picture to make it brighter or darker ;



Night Vision Mode: There are three night vision modes: smart mode, infrared night vision mode, and colour night vision mode;



Motion Tracking: After turning on this function, the camera will follow any detected moving objects;



Sound Detection: After turning on this function, when the device detects sound, it will send an alarm notification to users through the APP;



Motion Detection: After turning on this function, when the device detects movement, it will send a motion detection notification to users through the APP;



Siren: Users can manually turn on the alarm function of the device;

# PRECAUTIONS

- ◆ Try to stay away from metal ;
- ◆ Avoid behind furniture and near home appliances microwave ovens;
- ◆ Avoid environments where audio cables, video cables, and data cables are entangled, and keep as much space as possible with cables;
- ◆ Make sure to be as close as possible within the coverage of the wireless Wi-Fi signal. Connect to WiFi as close as possible;
- ◆ Please reconfigure the network connection of the camera when using it in a new network environment.

## Name and content of harmful substances in products

Part Name	harmful substances					
	Pb	Hg	Cd	Cr(VI)	PBB	PBDE
Housing	O	O	O	O	O	O
Circuit board	X	O	O	O	O	O
Charger	O	O	O	O	O	O
Appendix	O	O	O	O	O	O
This form is compiled in accordance with the provisions of SJ/T 11364.						

This product complies with RoHS environmental protection requirements. Currently, there is no mature technology in the world that can replace or reduce the lead content in electronic ceramics, optical glass, steel and copper alloys.

## WARRANTY INFORMATION

Our product is guaranteed to be free from manufacturing defects for a period of 12 Months.

If your product becomes defective during this period, Electus Distribution will repair, replace, or refund where a product is faulty; or not fit for intended purpose.

This warranty will not cover modified product; misuse or abuse of the product contrary to user instructions or packaging label; change of mind and normal wear and tear.

Our goods come with guarantees that cannot be excluded under the Australian Consumer Law. You are entitled to a replacement or refund for a major failure and for compensation for any other reasonably foreseeable loss or damage. You are also entitled to have the goods repaired or replaced if the goods fail to be of acceptable quality and failure does not amount to a major failure. To claim warranty, please contact the place of purchase. You will need to show receipt or other proof of purchase. Additional information may be required to process your claim.

Any expenses relating to the return of your product to the store will normally have to be paid by you.

The benefits to the customer given by this warranty are in addition to other rights and remedies of the Australian Consumer Law in relation to the goods or services to which this warranty relates.

This warranty is provided by:

Electus Distribution

Address 46 Eastern Creek Drive, Eastern Creek NSW 2766

Ph. 1300 738 555