

digitech

Indoor/Outdoor UHF/VHF Antenna



User Manual

LT-3166

Box Contents:



1 x Indoor/Outdoor UHF/VHF Antenna



1 x 4m F to F Antenna Cable



1 x 4m F to PAL Antenna Cable



1 x Flat Window Antenna Cable



1 x Power Injector



1 x Mains Power Adaptor



1 x Mast/Rail Clamp



1 x Mast/Rail & Wall Mounting Hardware

Installation:

Mast/Pole Mount:

1. Connect the included antenna bracket to the rear of the antenna.
2. Position the rear of the antenna bracket to a mast or pole (not included). Once it has been positioned correctly; place the mast/rail clamp (U-Bolt) through the pole or mast and fasten the nuts to the antenna bracket to hold securely in place.



Note: If you end up tying the antenna cable to the mast or pole; ensure it has around 0.5m space between the antenna in case you need to position the antenna horizontally.

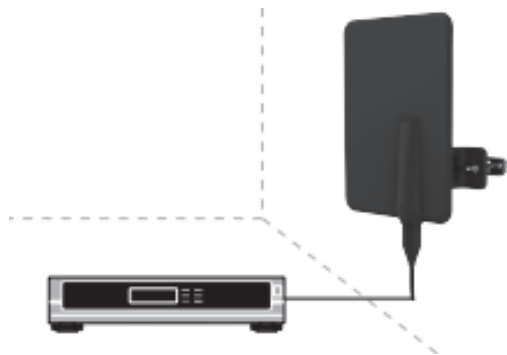
Rail/Balcony Mount:

1. Connect the included antenna bracket to the rear of the antenna.
2. Position the rear of the antenna bracket to the railing of the balcony; place the mast/rail clamp (U-Bolt) through the railing and fasten the nuts to the antenna bracket to hold securely in place.



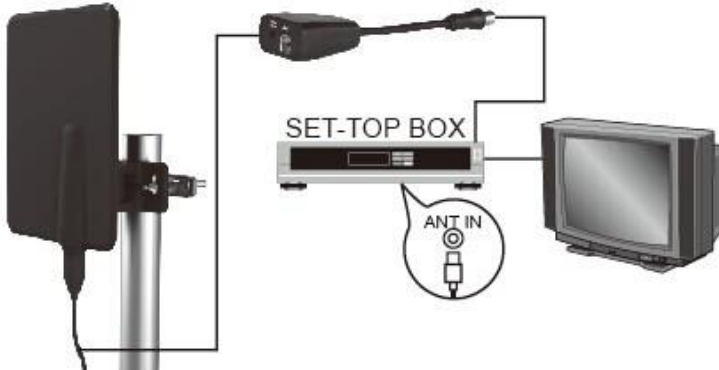
Wall Mount:

1. Connect the included antenna bracket to the rear of the antenna.
2. Drill holes in your wall to your desired location on where you want the antenna to be positioned.
3. Hammer the plastic screw anchors (included) inside the holes drilled in your wall.
4. Position the antenna bracket directly in line with the holes and secure in place with the included screws.



Connection:

1. Connect the DC plug of the mains power adaptor to the DC power socket of the power injector.
2. Connect the mains power adaptor to a standard 240VAC wall outlet and turn it on.
3. Insert the PAL connector of the power injector into the socket of your TV or set top box.



4. Connect the male PAL plug from the 4m PAL to F cable in to the power injector PAL socket.
5. Connect the opposite male end of the PAL to F cable into the flat window antenna cable socket.
6. Connect the opposite end of the flat window antenna cable to the male F to F 4m cable.

7. The male end of the F to F cable can be plugged into the F socket located at the bottom of the antenna. Once it has been screwed on; place the weatherproof shroud over the connector to prevent water from getting inside.



8. If you prefer to have a shorter cable then the 4m PAL to F cable can be directed directly from the power injector to the antenna. However, if you connect the cable this way; it will not include the weatherproof shroud around the base of the antenna if used outdoors.

9. Turn on your TV or set top box and run a channel search scan.

10. Try to reposition the antenna vertically or horizontally if you're getting low signal or you may be in a low signal area. Refer to the reception page of the user manual.



Note: Please refer to your user manual of your TV or set top box if you're unsure on how to complete a channel search scan.

Reception:

This antenna is suggested for use up to a 25km (indoor) and 50km (outdoor) distance to the TV tower. Please note that obstacles in-between the tower and receiver such as buildings or walls may affect the distance.

Please refer to the following websites to check the coverage in your area:

Australia - <https://myswitch.digitalready.gov.au/>

New Zealand - <https://www.freeviewnz.tv/faq-library/about-digital-tv/coverage-maps/>

For best reception; please try the following steps:

1. Reposition vertically/horizontally or change the direction of your antenna to try and obtain better signal. Run a channel search again on your TV once the antenna has been moved.
2. The antenna distance to the TV tower may be affected by objects in-between; it is suggested to change the position of the antenna to try and avoid these objects. Objects such as microwaves may affect the signal. The signal strength may be far greater even by moving the antenna a short distance.
3. Mount the antenna as high as possible on a wall, rail or mast
4. It is suggested not to place the antenna near your TV as it may cause interference.

Troubleshooting:

Problem:	Solution:
Antenna won't power on	Connect the mains power adaptor to the DC socket of the power injector and connect properly to a 240VAC wall socket.
	Check to see if the mains power adaptor is working correctly.
No Reception / Low Reception	Reposition the antenna in a different position or direction.
	Check to see if you're within a 25km (indoor)/ 50km (outdoor) distance of your TV tower. Check the coverage websites located in the reception section.
	Move the object away from your TV as it may reduce the signal reception.
	Keep the antenna away from obstacles such as the microwave or any metal objects as it may cause interference.

Safety:

1. Do not open the case of the antenna to avoid damage and injury.
2. Do not expose the mains power adaptor to water, moisture or liquids to prevent the unit from damage.
3. Make sure the mains power adaptor is connected correctly to a standard 240VAC wall socket.
4. If using a replacement or third party mains power adaptor; make sure the voltage and current match the specifications as 6VDC, 50mA.

Features:

- . In-Built Amplifier
- . 4G/LT Filter
- . Weatherproof
- . Horizontal & Vertical Orientation
- . Mast, Rail & Wall Mountable

Specifications:

UHF Frequency: 470-694MHz

VHF Frequency: 170-230MHz

Antenna Gain: 19dB \pm 3 (UHF)

11dB \pm 3 (VHF)

Distance to TV Tower: Up to 25km (Indoor)

Up to 50km (Outdoor)

Channels: 6-12 & 25-69

Impedance: 75 Ω

IP Rating: IPX4

Power: 6VDC, 50mA

Power Consumption: 40mA (Max)

Dimensions: 230(H) x 165(W) x 5(D)mm

Distributed by:
TechBrands by Electus Distribution Pty. Ltd.
320 Victoria Rd, Rydalmere
NSW 2116 Australia
Ph: 1300 738 555
Int'l: +61 2 8832 3200
Fax: 1300 738 500
www.techbrands.com