

# NEXTECH

LA5068



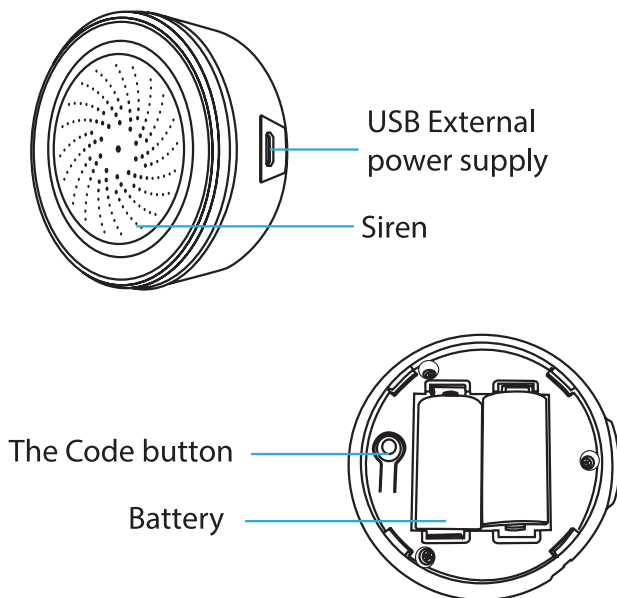
## Smart WiFi Humidity and Temperature Sensor

## Instruction Manual

# CONTENTS

Product Configuration	2
Specifications	3
LED Indicator	4
Switching Modes	4
App Download	5
Registration	5
Add Devices	6
App Interface:	8
Advanced Features	9

## PRODUCT CONFIGURATION:



Notice: Please use USB power supply, the backup battery can only work for two days. Plug in the USB power supply and load the battery at the same time, then the sensor will work in priority.

## SPECIFICATIONS:

USB Power Adapter:	5V/1A
Max Current:	60mA
Sound Intensity:	90db/1M
Wireless Type:	2.4GHz
Wireless Standard:	IEEE 802.11b/g/n
Wireless Range:	45M
Operating Temperature:	0°C ~ 40°C (32°F ~ 104°F)
Operating Humidity:	20% ~ 85%
Storage Temperature:	0°C ~ 60°C (32°F ~ 140°F)
Storage Humidity:	0% ~ 90%
Size:	68mm Ø x 33mm



Smart Life



Tuya Smart

## LED INDICATOR:

Device Status	LED State
EZ Mode	Indicator flashes quickly
AP Mode	Indicator flashes slowly
Triggered	The indicator will rapidly blink, and turn OFF after a scheduled time
Reset	Indicator lights up for 4 seconds and then turns OFF. After 2 seconds the device goes into configuration mode

## SWITCHING MODES

1. Press and hold the "Code" button for 6 seconds, the LED indicator will flash rapidly. The device has been set to EZ Mode.
2. Press and hold the "Code" button for 6 seconds, the LED indicator will flash slowly. The device has been set to AP Mode.

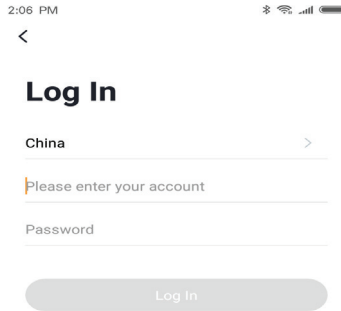
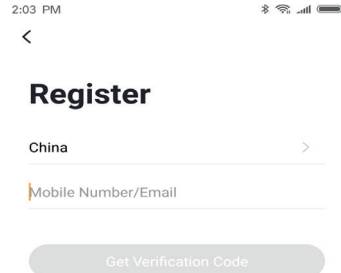
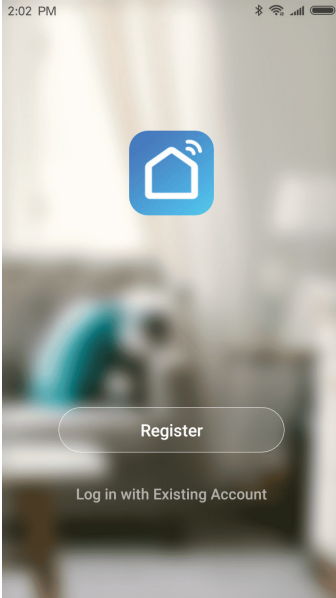
## APP DOWNLOAD:

Scan the following QR code to download APP for Android and iOS system. Alternatively, you can download the APP named as "Smart Life" from Apple Store & Google Play.



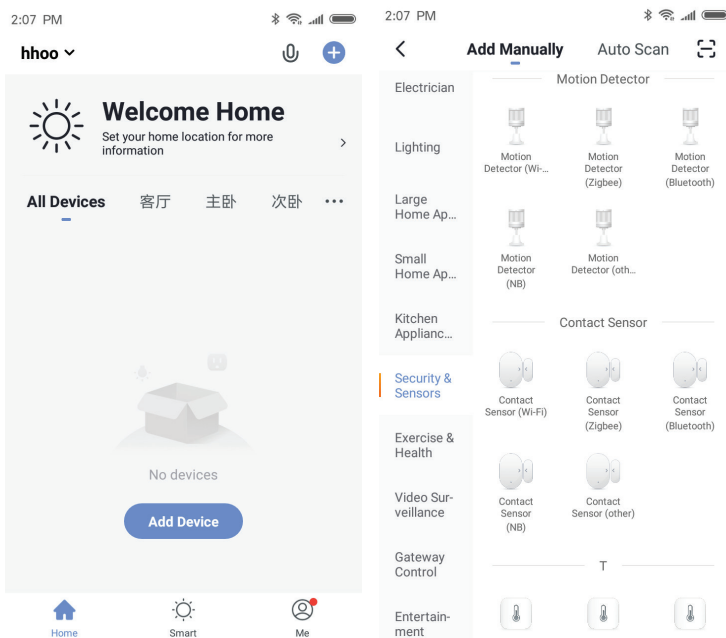
## REGISTRATION:

Open the APP and type your mobile number or email address, and then confirm password to complete the registration.



## ADD DEVICES:

1. Click "Add Device", Select the Device Type in the list to add.



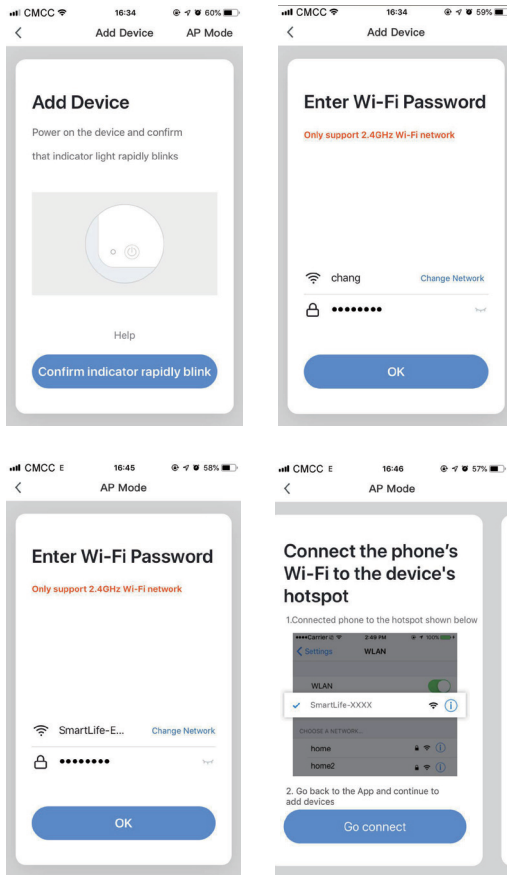
2. Press the Code button for 6 seconds to enter the Wi-Fi configuration state ("fast blinking in EZ Mode or slow blinking in AP Mode.)
3. Input the Wi-Fi SSID and password of the Wi-Fi network that the device is going to work with, then waiting around 30 seconds for the Wi-Fi Configuration to be finished (until the device is successfully added.
4. Changes the device name and share it within the APP account as you want
5. Click the device just added to launch the device stage UI check the state, battery level, record history and the APP notification setting.

## ADD DEVICES:

### AP Mode

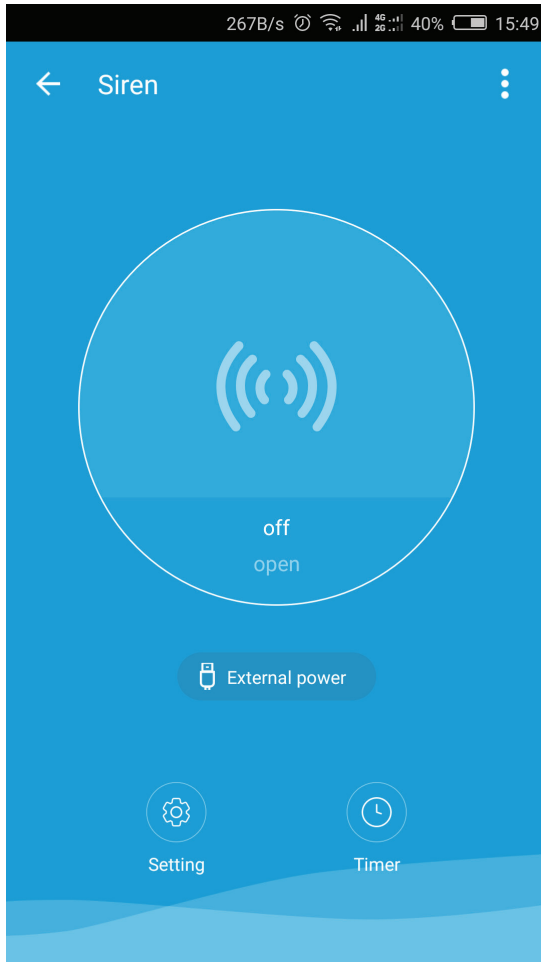
When it into EZMode, Press and hold the button for 6s time, the blue LED indicator will blink slow, then enter the AP mode. Make sure your APP is connected to the Internet and both the device and APP are in AP Mode. Input the SSID and password for the Wi-Fi Network then open the Wi-Fi list, select Smartlife\_XXXX, and get back when connected successfully, it will show "Connecting now" then. Once it is connected successfully, click done and return to the device main interface.

Once the device has connected successfully and added to the APP, the LED will turn off.





## APP INTERFACE:



## **ADVANCED FEATURES:**

### **Main Functions**

- Setting Alarm Duration and alarm sound type.
- Programming Scheduled Alarm

### **Linkage Alarm Setting**

- Connect two sensors via scene setting.

### **Device Sharing**

- Allows others to control the device.

### **Push Notification**

- Open/close push notification.

### **Remove Device**

- Restore default settings; Delete and add the device again to clear the record by APP.

**NOTES:**

Distributed by:  
Electus Distribution Pty. Ltd.  
320 Victoria Rd, Rydalmere  
NSW 2116 Australia

[www.electusdistribution.com.au](http://www.electusdistribution.com.au)

Made in China