

Wireless Doorbell



Model:
LA5056

Instruction Manual

BEFORE FIRST USE

Prior to using your product, please read all the safety and operating instructions thoroughly. Please ensure you follow the steps below before using the product. We recommend you keep the original packaging for storing the product when not in use.

Find a safe and convenient place to keep this instruction manual for future reference.

Unpack the product but keep all packaging materials until you have made sure your new product is undamaged and in good working order. Ensure you have all accessories listed in this manual.

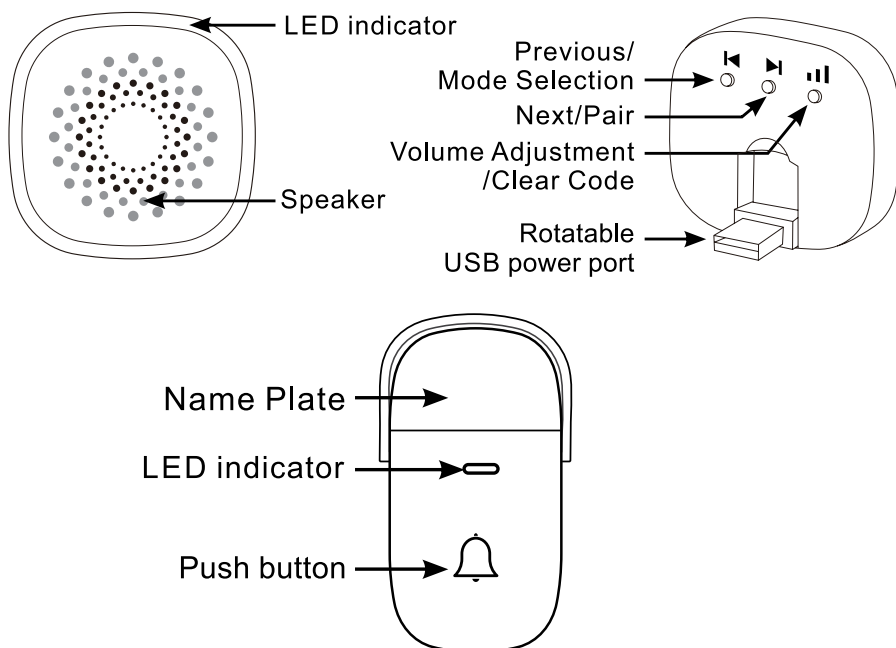
BOX CONTENTS

1 x Receiver

1 x 3M Sticker

1 x Remote Control

PRODUCT DIAGRAM



INSTRUCTIONS

Mode Selection: Long press the "◀" on the receiver for 3 seconds to switch between two modes: ringtone only, ringtone together with flashing light.

Ringtone Selection: Press the "◀" or "▶" on the receiver to select the previous or next ringtone. There are 60 ringtones in total for selection.

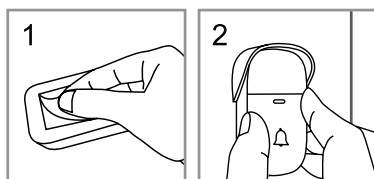
Volume Adjustment: Press "⏸" on the receiver to adjust the volume. Five volume levels can be selected, i.e., Mute (with flashing light) /Low/Medium/High/Max.

Pairing: Long press "▶" on the receiver for over 3 seconds, it will sound "Ding-Dong" to indicate that it has entered into the pairing state. Now, press the Push button on the remote control, when the receiver sounds the ringtone selected, the pairing is successful (Follow the instruction to pair one remote control to the receiver. To pair more, repeat the instruction. Max 20 remote controls can be paired to one receiver).

Clearing Code: Long press "⏸" on the receiver for over 5 seconds, it will sound "Ding-Dong, Ding-Dong" to indicate that clearing code is successful (This action will clear the code for all remote controls).

Working Indicator: In the working state, the LED light on the receiver will flash in accordance with the ringtone. When pressing the push button on the remote control, the LED light on the remote control will be turned on.

INSTALLATING THE REMOTE CONTROL



1. Paste the 3M sticker onto the back of the remote control.
2. Attach the remote control onto a wall or a door.

SPECIFICATIONS

Remote Control

Push Force	< 25N
Lifespan	> 30000 pushes
Transmitting Power	<10dBm
Transmitting Time	20ms/transmission
Antenna Gain	2dBi
Working Temperature	15°C~50°C
Use Environment	Indoor or Outdoor
IP Rating	IPX5

SPECIFICATIONS

Receiver

Power	USB DC 5V 0.5A (Required, not included)
Standby Current	<10mA
Working Current	Max. < 150mA / Average < 100mA
Volume (30cm)	Low: 62-68dB / Medium: 68-74dB / High: 74-80dB / Max: 80-90dB
Demodulation	OOK
Frequency	433.92MHz +/- 250KHz
Distance	150~250m (Open Area)
Working Temperature	10°C~50°C
Use Environment	Indoor

WARRANTY INFORMATION

Our product is guaranteed to be free from manufacturing defects for a period of 12 Months.

If your product becomes defective during this period, Electus Distribution will repair, replace, or refund where a product is faulty; or not fit for intended purpose.

This warranty will not cover modified product; misuse or abuse of the product contrary to user instructions or packaging label; change of mind and normal wear and tear.

Our goods come with guarantees that cannot be excluded under the Australian Consumer Law. You are entitled to a replacement or refund for a major failure and for compensation for any other reasonably foreseeable loss or damage. You are also entitled to have the goods repaired or replaced if the goods fail to be of acceptable quality and failure does not amount to a major failure.

To claim warranty, please contact the place of purchase. You will need to show receipt or other proof of purchase. Additional information may be required to process your claim.

Any expenses relating to the return of your product to the store will normally have to be paid by you.

The benefits to the customer given by this warranty are in addition to other rights and remedies of the Australian Consumer Law in relation to the goods or services to which this warranty relates.

This warranty is provided by: Electus Distribution

Address 46 Eastern Creek Drive, Eastern Creek NSW 2766 | Ph. 1300 738 555