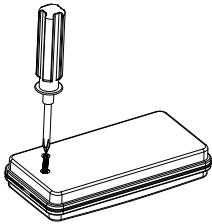
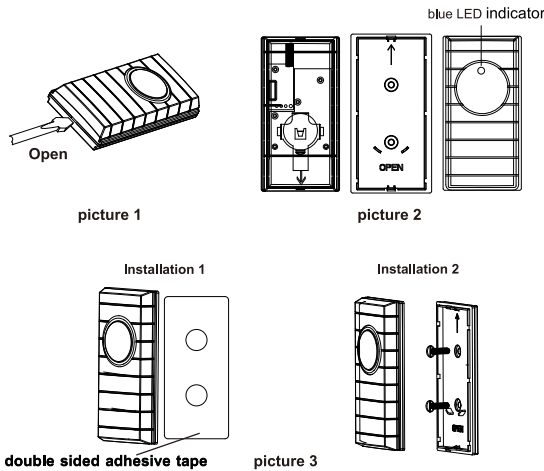


## USER MANUAL

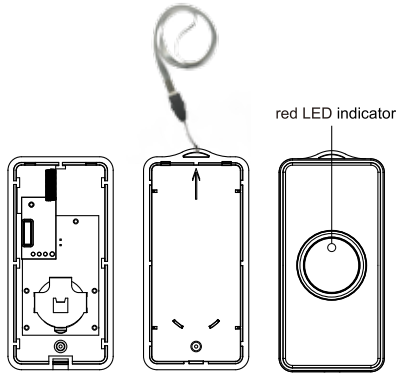
### FEATURES:

1. The wireless, easy mounting design does not damage wall or door decor and allows portable use of the receiver, as well as the two transmitters.
2. 16 digital codes are built in to ensure that another unit being operated close-by will not cause interference or false alarms.
3. The range is up to 80 metres in an open area.
4. The receiver speaker outputs clear sounds with a choice of melodies for the doorbell and emergency sounds for the alert alarm operation.
5. Two transmitters are included. The first is a standard doorbell design and the other is a panic alarm button with neck cord. Both have a LED light indicator when activated and the DOORBELL transmitter is water resistant.
6. The receiver has three signal options, including light signals for users with limited hearing.
  - a) Sound only
  - b) Light only
  - c) Sound and light
7. The user can choose from 36 melody doorbell sounds and 9 emergency sounds.
8. Energy saving with battery life around 12 months (based on 20 operations per day).
9. Low battery indication for receiver.
10. LCD calendar.
11. Alarm with 8 different musical sounds.
12. Battery:2XAG13(included) for LCD calendar,3XAAA batteries(not included) for receiver and 1XCR2032(included) for each transmitter.

### INSTALLING THE DOORBELL TRANSMITTER



picture 4

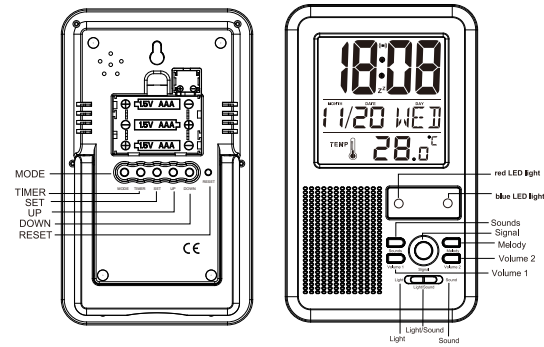


picture 5

1. Use a small, cross screwdriver to open the back of the **ALARM** transmitter (refer to picture 4).
2. Remove the battery insulation sheet (refer to picture 5). Test by pressing the button and the RED indicator will light when button is pressed.
3. The **ALARM** transmitter has a cord to be worn as a pendant or can be left by the bedside.
4. The **ALARM** transmitter uses 1 x CR2032 battery (included).

### USING THE ALARM TRANSMITTER

### INSTALLING THE RECEIVER



1. **FIT THE BATTERIES** - Remove the battery cover and fit 3 x AAA batteries. Take care to note the correct polarity position (+/-). Refit the battery cover.
2. **SET THE ID CODES** - Press the **"SIGNAL"** key to receive the ID mode after power on. This will auto off after two minutes. Whilst in the ID receive code, press the **DOORBELL** and the receiver blue light will flash for 3 seconds. The blue light will turn off after successfully receiving the code. Then press the red button on the **ALARM** transmitter and the receiver red light will flash for 3 seconds. The red light will turn off after successfully receiving the code.
3. **SOUND & LIGHT OPTIONS** - The receiver has three signal options
  - a. **SOUND** – The music/alarm will play when the doorbell or alarm transmitter is pressed.
  - b. **LIGHT & SOUND** – The music/alarm will play when the doorbell or alarm transmitter is pressed and the corresponding blue or red light will flash.
  - c. **LIGHT** – The blue or red light will flash when the doorbell or alarm transmitter is pressed.
4. **CHOOSE THE SOUNDS** - Press the **SOUNDS** key to choose the alarm sound you prefer (9 sounds are available for selection). Press the **MELODY** key to choose the doorbell melody you prefer (36 melodies are available for selection).
5. **VOLUME** - Press **VOLUME 1** key to adjust the alarm volume. To adjust the doorbell melody volume press **VOLUME 2**.
6. **ALARM CANCEL** - The alarm sounds for one minute, press **SOUNDS**, **VOLUME1**, **MELODY** or **VOLUME2** to cancel the alarm during this time.
7. **INTERFERENCE** – If the unit is causing interference with a neighbours' equipment please remove the receiver batteries for a few minutes then follow the **SET THE ID CODES** instructions above to re-set a new ID code.

### 1.TIME SETTING :

Open the battery cover and take out the insulation sheet

At the normal time display mode, press the **SET** key, the figure to be set will flash. Adjust the setting, while the figure to be set is flashing, by pressing **UP** or **DOWN** in the sequence of hour, minute, year, month, date. (please press **SET** key after each sequence)

**NOTE:** The week will automatically adjust when the year, month and date are set.

### 2.ALARM AND SNOOZE FUNCTION:

**ALARM SETTING:** At the normal time display mode, press **MODE** to enter the alarm display mode (marked with ☞). Press the **SET** key and the figure to be set flashes, adjust the setting by pressing **UP** or **DOWN** buttons. The setting sequence as follows,

Alarm hour — alarm minute —snooze interval—alarm sounds

#### ON/OFF SET:

Under the alarm display mode, press the **UP** or **DOWN** to turn on alarm (marked withⓂ). Press **UP** or **DOWN** a second time for snooze function on and press a third time for turn off the alarm and snooze functions. (The snooze is functional when "Z" mark is on.)

#### NOTE :

- a. If only the alarm function is turned on and the snooze function is not on, when the set time is up the alarm will continue for one minute and it can be stopped by pressing any of the keys.
- b. If the snooze function is already turned on, the alarm will ring once at every snooze interval (totaling 2 times), you can stop it by pressing any of the key, and the snooze mark "Z" will go off when the alarm is cancelled.
- c. Snooze interval(1~60 minutes).

### 3.COUNT DOWN TIMER

Press the **TIMER** key to enter the count down timer mode (marked with ⏰) Press the **SET** key and make the setting by pressing the **UP** or **DOWN** key when the figure to be set flashes. After setting, press the **TIMER** key to count down (press again to pause/continue), the alarm will ring for about one minute when the set time is up, which can be stopped by pressing any of the keys.

Cancelling the setting of the count down timer: while in the count down timing state, press the **TIMER** key to pause and press the **UP** key until 00:00:00 appears in the count down time.

**4.SHIFT BETWEEN 12 & 24 HRS:** On the normal time display mode, press **UP** to shift between 12 and 24 hour modes, **AM/PM** will appear in 12 hour mode

**5.SHIFT BETWEEN CELCIUS AND FAHRENHEIT DEGREES:** on the normal time display mode, press the **DOWN** key to shift between Celsius and Fahrenheit degrees.

**NOTE:** The selection will be automatically saved if no key is pressed within one minute

### LOW BATTERY INDICATION

The blue and red LED light indicator of the receiver will flash at the same time if the working voltage less than 3.5v. Please replace the batteries for receiver to make sure it works smoothly.

### NOTES AND WARNINGS:

1. When the "Signal" key is pressed the doorbell and alarm will not operate whilst the unit awaits new ID codes (see point 2 above). After the new codes are received (or after a 2-3 minutes time period) the operation will return to normal.
2. Use high quality alkaline batteries for maximum life.
3. Keep away from humidity, rain, sunlight and metal objects.
4. Do not attempt to disassemble the product. There are no user serviceable parts in this device.
5. In different environments the range will change. Please note that metal objects will reduce the operating range.
6. If the doorbell or alarm transmitters do not operate please replace the battery.
7. Do not immerse electrically operated products in water or other liquid.
8. Wipe clean only.

### BATTERY INFORMATION

For receiver battery replacement instructions please follow the details in the first part this manual.

To change the battery in either transmitter proceed as follows.

1. Use a small screwdriver to open the back of the transmitter.
2. Slide out the old CR2032 battery and replace it with a new battery.
3. Refit the back of the transmitter.

Use only designated battery type. Do not use re-chargeable batteries. Do not mix battery types.

Read instructions carefully and install batteries correctly observing the polarity (+ -) sign to avoid leakage.

Always replace sets of batteries at the same time. Do not mix old and new batteries.

Do not attempt to recharge non-rechargeable batteries.

Remove batteries from the product when it will not be used for an extended period of time to avoid leakage.

Remove exhausted batteries to avoid leakage.

Do not short out battery contacts.

Do not dispose of batteries in fire.