

USER MANUAL



WORKS WITH
Google Assistant



WORKS WITH
amazon alexa

GENERAL INFORMATION & SAFETY INSTRUCTIONS

WARNING: The manufacturer is not responsible for any potential injury from misuse

BOX CONTENTS

1 x USB Lead
10 x Hex Lights
9 x Connectors

FEATURES

- Support WiFi 2.4GHz 802.11 b/g/n wireless network.
- Support remote/ local control through 2G / 3G /4G / Wi-Fi networks.
- You can share the main account with subaccounts, limited to a maximum of six smart devices.

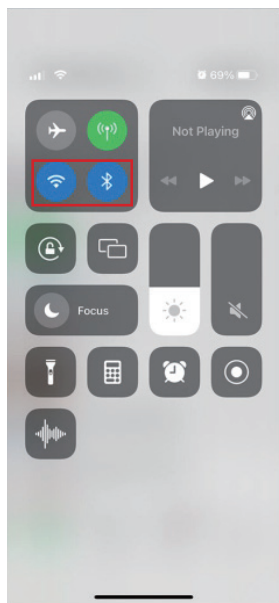
CONNECT WITH THE APP



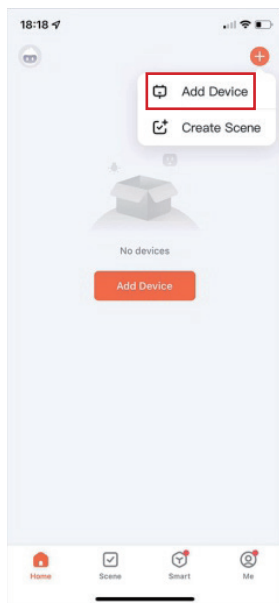
Tuya Smart



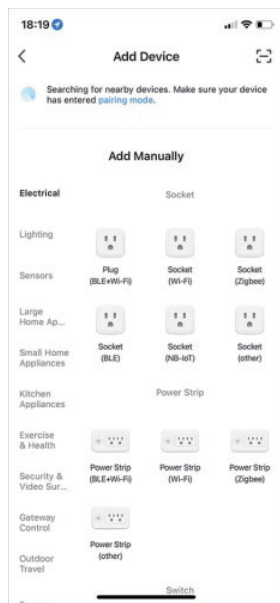
Smart Life



1. Turn on both Bluetooth and WiFi on your smart phone and download the "Tuya" app.



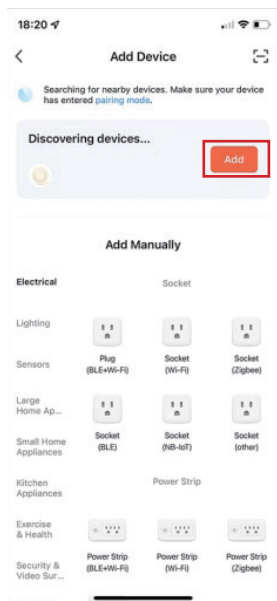
2. Click "Add device" in the app to enter the search status.



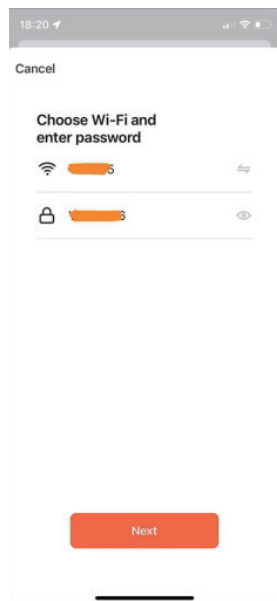
Searching for device.



3. Turn on the lightbar. Press and hold the power button on the control box for approximately 5 seconds. Then the lightbar will then appear in your app.

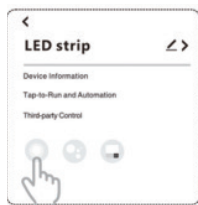


4. Click "Add" in the app



5. Enter your home WiFi information to complete the connection

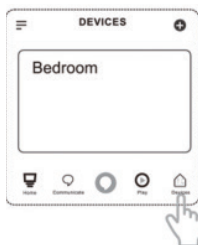
HOW TO CONNECT YOUR SMART HEX LIGHTS TO YOUR SMART LIFE SYSTEM



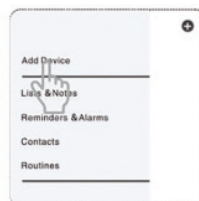
1. Open Alexa App, click Alexa.



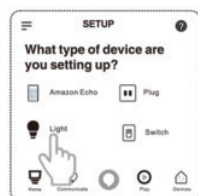
2. Land Alexa.



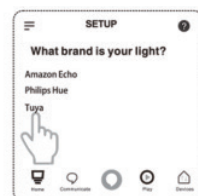
3. Click "Devices" on the bottom right corner



4. Click "Add Device"



5. Click "Light"



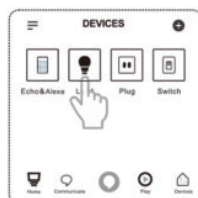
6. Click "Tuya"



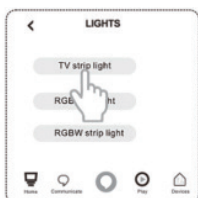
7. Click "Discover Devices"



8. Allow time for Alexa to search your Smart Hex Lights



9. Click "Light"



10. Select the lighting equipment to control



11. Select the device colour interface.



12. Equipment control interface

HOW TO CONTROL THE SMART LED LIGHT DEVICE WITH ALEXA VOICE CONTROL

Instructions:

To initiate Alexa, start by saying 'Alexa.' Once awakened, you'll notice the blue LED light surrounding Alexa. Employ 'turn on' to activate a device and 'turn off' to deactivate it. Conclude by stating the name of the device you wish to control

Try out these phrases ({Device Name} should be the name of your device):

Take a light bulb as an example with the name 'light' {Device Name}:

ON: "Alexa, turn on light {Device Name}". When you hear the response 'OK,' it means the control was successful.

OFF: "Alexa, turn off light {Device Name}".

Dimming:

"Alexa, set light {Device Name} to 80 percent."

"Alexa, dim light {Device Name} to 50 percent."

"Alexa, dim light {Device Name} by 100 percent."

Colour changing: "Alexa, set light {Device Name} to blue.""

SPECIFICATIONS

| | |
|----------------------------|-------------------------------|
| Working Temperature | -10°C to 45°C (14°F to 113°F) |
| Humidity | <= 80% RH |
| Working Environment | Indoor |

WARRANTY INFORMATION

Our product is guaranteed to be free from manufacturing defects for a period of 12 Months.

If your product becomes defective during this period, Electus Distribution will repair, replace, or refund where a product is faulty; or not fit for intended purpose.

This warranty will not cover modified product; misuse or abuse of the product contrary to user instructions or packaging label; change of mind and normal wear and tear.

Our goods come with guarantees that cannot be excluded under the Australian Consumer Law. You are entitled to a replacement or refund for a major failure and for compensation for any other reasonably foreseeable loss or damage. You are also entitled to have the goods repaired or replaced if the goods fail to be of acceptable quality and failure does not amount to a major failure.

To claim warranty, please contact the place of purchase. You will need to show receipt or other proof of purchase. Additional information may be required to process your claim.

Any expenses relating to the return of your product to the store will normally have to be paid by you.

The benefits to the customer given by this warranty are in addition to other rights and remedies of the Australian Consumer Law in relation to the goods or services to which this warranty relates.

This warranty is provided by:

Electus Distribution

Address 46 Eastern Creek Drive, Eastern Creek NSW 2766

Ph. 1300 738 555



R-NZ