

PHILIPS

Starter kit E27

Hue White and color
ambiance

White and colored light

Smart control

Control with app or voice*

Hue Bridge included



8719514393677



Easy smart lighting

Add ambient color to any room with the Philips Hue White and color ambiance starter kit. The kit includes 3 color smart bulbs and a Hue Bridge, which provides full control of the lights, access to the Hue app, and endless features.

Limitless possibilities

- Get in the mood with warm to cool white smart lights
- Play with smart color lights
- Sync movies, TV shows, music, and games to smart lights
- Smart lights to wake you up and help you sleep
- Smart home automation hub: Hue Bridge
- Control lights with your voice

Easy smart lighting

- Create a personalized experience with colorful smart light

Highlights

Get in the mood



Use over 50,000 shades of warm to cool white light to put you in the mood to work, play, or relax • no matter what time of day it is. Start your morning off on the right foot with cool, energizing bright white light, or settle down for the night with golden tones.

Play with smart color lights



There's no limit with Philips Hue: with over 16 million colors, you can transform your home into the perfect party venue, bring a bedtime story to life, and much more. Use preset, colored light scenes to evoke the feeling of summer any time you'd like, or use your own photo to relive a special memory.

Sync movies, TV shows, music, and games to smart lights



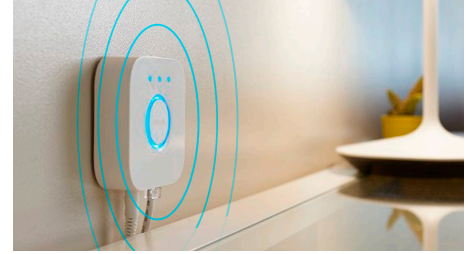
Bring your entertainment to new heights by syncing the action on the screen or the beat of your music to your smart lights.* Choose the way you'd like to sync your lights to your movie, music (including with our Spotify integration!), TV show, or game and watch as the color-capable lights in your Entertainment area react. *Hue Bridge required

Wake up and sleep



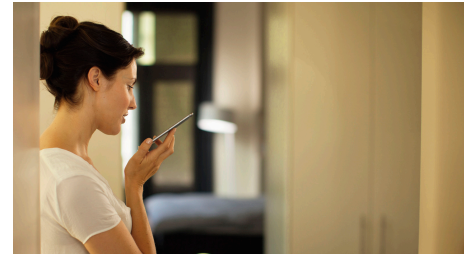
Set your lights to slowly brighten in the morning at a preset time to mimic sunrise and help you start your day feeling calm and refreshed. In the evening, the relaxing warm white lights will help you unwind, relax and prepare your body for a good night's sleep.

The Hue Bridge



The Hue Bridge is an essential component to a personal Philips Hue smart lighting system. It is the brains of the operation, communicating with both your smart light bulbs and the Hue app to ensure that everything works together. It also enables smart home automation features like scheduling routines and timers.

Control with your voice



When connected to the Hue Bridge, you can pair your lights with Alexa, Apple HomeKit, and the Google Assistant and control your lights using just your voice. Simple voice commands let you turn your lights on and off, dim or brighten your lights, and even set a light scene.

Create a personalized experience with colorful smart light



Transform your home with over 16 million colors, instantly creating the right atmosphere for any event. With the touch of a button, you can set a festive mood for a party, turn your living room into a movie theater, enhance your home decor with color accents, and much more.

Specifications

Bulb dimensions

- Dimensions (WxHxD): 60x110

Environmental

- Operational humidity: 5% <H<95% (non condensing)
- Operational temperature: -20°C to 45°C

Extra feature/accessory incl.

- Dimmable with Hue app and switch: Yes

Guarantee

- 2 years: Yes

Power consumption

- Energy Efficiency Label (EEL): n/a

Service

- Warranty: 2 year(s)

Technical specifications

- Weight: 72 g
- Bulb technology: LED
- Lumen output at 4000K: 1,055 lumen

The bridge

- Frequency band: 2400-2483.5 MHz
- Height: 26 mm
- Max. number of accessories: 12
- Max. number of bulbs: 50
- Power adapter: 100-240 V AC / 50-60Hz
- Power consumption: 250mA max

The bulb

- Color temperature: 2000K-6500K +16 million colors
- Diameter: 60 mm
- Energy label (acc (EU) 874/2012; A++ - E): F
- Fitting: E27
- Form factor: A60
- Height: 109 mm
- Input voltage: 220V-240V
- Lifetime: 25,000 h
- Light output: 16 million colors
- Lumen output: 1055 lm @ 4000K
- Max. operation power: 9 W
- Max. standby power: 0.5 W
- Number of switching cycles: 50,000
- Power factor: 0.5
- Rated lifetime: 25,000 h
- Software upgradable: Yes
- Start up: Instant 100% light output
- Wattage: 11 W
- Wattage equivalent: 75 W
- Communication protocol: Bluetooth and Zigbee
- Software upgradable: When connected to Bluetooth App or Hue Bridge

What's in the box

- Bridge: 1
- Ethernet network cable: 1
- Hue bulbs: 3
- Power adapter: 1

What's supported

- HomeKit compatible: Yes
- IOS: Yes
- Philips Hue App: IOS 13 and above, Android 8.0 and above
- Voice assistants: Microsoft Cortana (Via Hue Bridge), Google Assistant, Apple HomeKit (Via Hue Bridge), Amazon Alexa
- Philips Hue Bluetooth App: Android 7.0 and later, IOS 11 and later

Packaging dimensions & weight

- EAN/UPC - product: 8719514393677
- Net weight: 0.480 kg
- Gross weight: 0.920 kg
- Height: 140.000 mm
- Length: 176.000 mm
- Width: 219.000 mm
- Material number (12NC): 929002468816



Issue date: 2021-12-23
Version: 0.67

© 2021 Signify Holding. All rights reserved. Signify does not give any representation or warranty as to the accuracy or completeness of the information included herein and shall not be liable for any action in reliance thereon. The information presented in this document is not intended as any commercial offer and does not form part of any quotation or contract, unless otherwise agreed by Signify. Philips and the Philips Shield Emblem are registered trademarks of Koninklijke Philips N.V.

www.lighting.philips.com