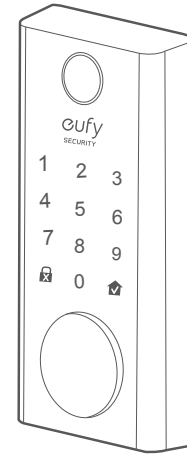


eufy  
SECURITY

eufy  
SECURITY



## USER MANUAL

Smart Lock Touch & Wi-Fi

Anker Innovations Limited. All rights reserved. eufy Security and eufy Security Logo are trademarks of Anker Innovations Limited, registered in the United States and other countries. All other trademarks are the property of their respective owners.

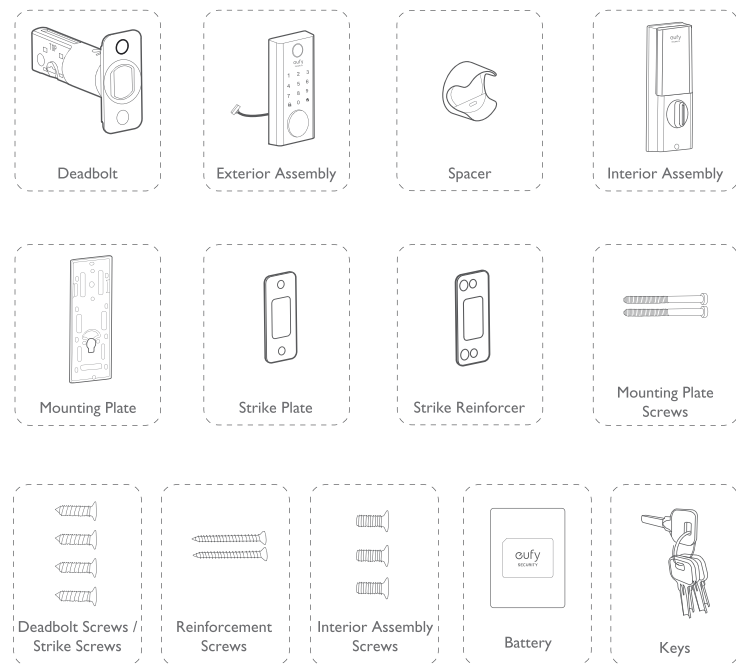
Model: T8520  
51005002256 V01

# TABLE OF CONTENTS

What's Included	<b>01</b>	<b>19</b>	Specifications
Product Overview	<b>02</b>	<b>20</b>	Troubleshooting
Getting Started	<b>03</b>	<b>21</b>	Important Safety Instructions
Installing the Smart Lock Touch & Wi-Fi	<b>06</b>	<b>21</b>	Notice
Setting up the Smart Lock Touch & Wi-Fi	<b>13</b>	<b>24</b>	Customer Service
Basic Operations	<b>17</b>		

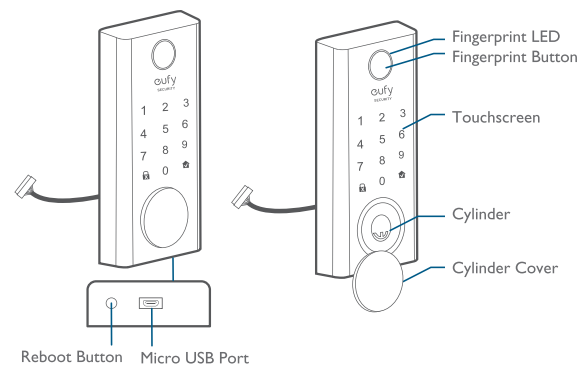
# WHAT'S INCLUDED

## For Smart Lock Touch & Wi-Fi Installation

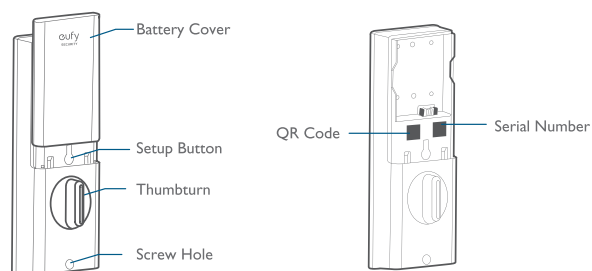


# PRODUCT OVERVIEW

## Front View



## Rear View



# GETTING STARTED

## Download eufy Security App

Download the eufy Security app from the App Store (iOS devices running version 10.2 and later versions) or Google Play (Android devices running version 5.0 and later versions).

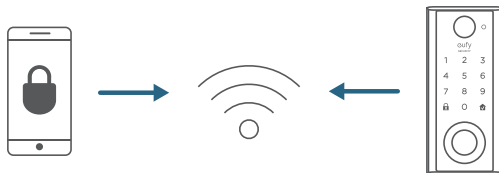


Sign up for a eufy Security account and add the Smart Lock Touch & Wi-Fi to the device list. Remove the battery cover and scan the QR code on the back of the device to view the Smart Lock Touch & Wi-Fi installation video.

**Note:** The T8520 Smart Lock Touch & Wi-Fi is embedded with an encryption chip. Bluetooth data and fingerprint information are all encrypted, so user information is secure and cannot be accessed by others.

## Connect to the Network via Wi-Fi

Featuring a built-in Wi-Fi module, the Smart Lock Touch & Wi-Fi can be connected to the network via your home router.



Follow the on-screen instructions in the WiFi Settings section on the eufy Security app to connect and pair your phone with Smart Lock Touch & Wi-Fi. Once successfully paired, you can operate the Smart Lock Touch & Wi-Fi even when you're outside your home.

**Note:** Make sure you add Smart Lock Touch & Wi-Fi to the device list on the eufy Security app before pairing it with your phone via Wi-Fi.

## Works with the Google Assistant / Amazon Alexa

The Smart Lock Touch & Wi-Fi can work with the Google Assistant / Amazon Alexa app. With Google Home or Amazon Alexa devices at home, you can lock or unlock the door using voice commands.

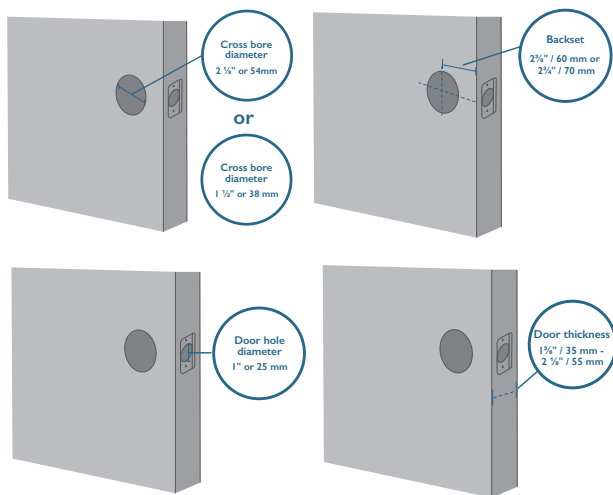


**Note:**

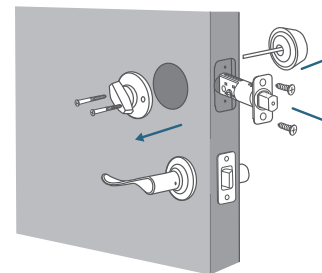
- Make sure you've downloaded the Google Assistant or Amazon Alexa app on your phone.
- Make sure your Google Home or Amazon Alexa devices are connected to the network.

## Prepare Door for Installation

1. Make sure that the following criteria are met so that the Smart Lock Touch & Wi-Fi can be installed properly:
  - ① Check the door status. Make sure the doorframe is aligned with the door.
  - ② There are no obstructions stuck in the doorframe.
  - ③ Leave enough space for the deadbolt to extend into the doorframe when the door is locked.
2. Check your door / frame dimensions to make sure that they fit the following measurements:
  - The cross bore diameter ( $2\frac{1}{8}$ " / 54 mm or  $1\frac{1}{2}$ " / 38 mm)
  - Backset ( $2\frac{3}{8}$ " / 60 mm or  $2\frac{3}{4}$ " / 70 mm)
  - Diameter of the door hole (1" / 25 mm)
  - Door thickness ( $1\frac{3}{8}$ " / 35 mm -  $2\frac{1}{8}$ " / 55 mm)



3. If you have an existing lock, remove it, including the bolt.

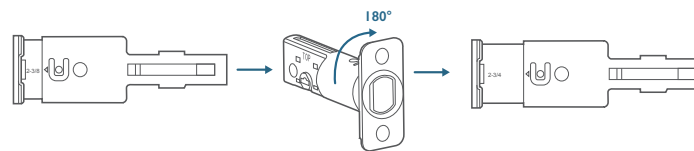


## INSTALLING THE SMART LOCK TOUCH & WI-FI

### Step 1: Install the Deadbolt

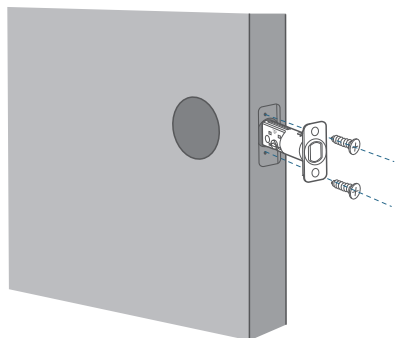
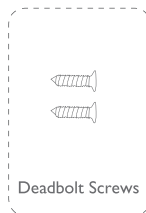
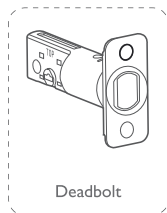
To install the deadbolt:

1. Measure your door's backset dimension: whether it is  $2\frac{3}{4}$ " / 70 mm or  $2\frac{3}{8}$ " / 60 mm.
2. If your door's backset dimension is  $2\frac{3}{8}$ " / 60 mm, use the provided deadbolt to install. If your door's backset is  $2\frac{3}{4}$ " / 70 mm, turn the faceplate  $180^\circ$  and pull to extend simultaneously until the deadbolt locks in position as the illustration shows below.



3. Insert the deadbolt into the doorframe and make sure the word "TOP" faces up as indicated on the deadbolt.
4. Screw into the doorframe with a screwdriver (not provided).

What is required: Deadbolt, Deadbolt Screws, Screwdriver (not provided)



## Step 2: Install the Strike Plate

If you have an existing strike plate installed, skip this step.

To install the strike plate:

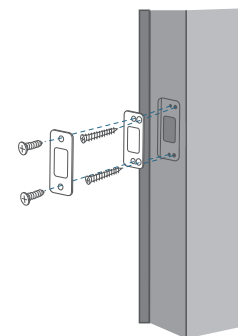
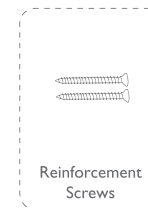
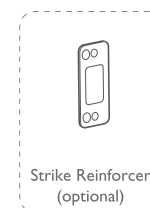
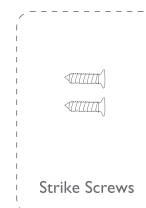
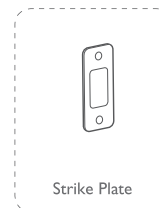
1. Align the strike plate with the center hole of the deadbolt.
2. Secure the strike plate with strike screws. Make sure the plate is placed in the correct direction.

To enhance the security, you need to first install the strike reinforcer.

Attach the strike reinforcer on the doorframe and tighten the reinforcement screws with a screwdriver (not provided).

07 English

What is required: Strike Plate, Strike Screws, Strike Reinforcer (optional), Reinforcement Screws (optional), Screwdriver (not provided)



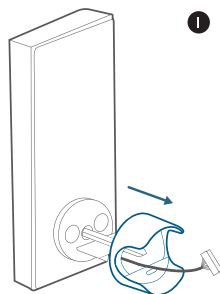
**Note:** This step is only necessary if you want to maintain BHMA Grade 2 security, or you can install strike plate directly.

English 08

### Step 3: Install the Exterior Assembly

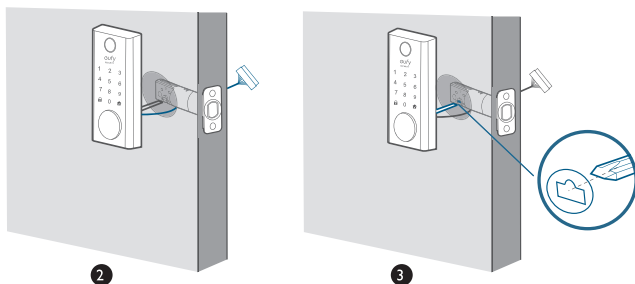
To install the exterior assembly into the doorframe:

1. Measure your cross bore dimension and determine the installation steps accordingly.
  - If the diameter of your cross bore is 2 1/8" / 54 mm, use the provided spacer to assist in installing the exterior assembly.
  - If you have a 1 1/2" / 38 mm crossbore, remove the spacer.



2. Route the cable connected on the exterior assembly under the deadbolt.
3. Align the tailpiece with the center hole of the deadbolt, and insert it into the center hole.

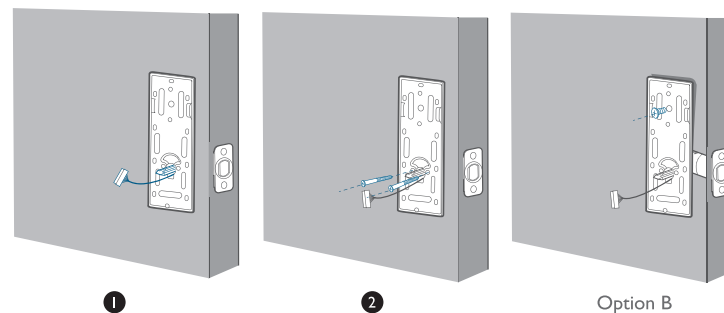
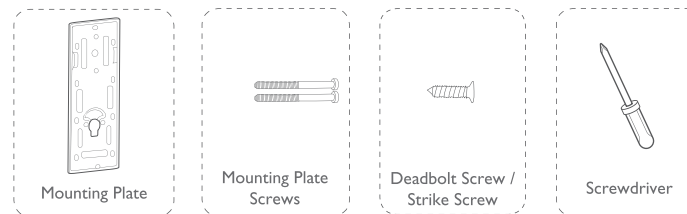
What is required: Exterior Assembly



### Step 4: Install the Mounting Plate

1. Route the cable through the mounting plate.
2. Fix the mounting plate onto the interior doorframe using the mounting plate screws. Make sure the screws go through the holes of the deadbolt and the mounting plate, and lock into place.
  - Option A: If the mounting plate fits perfectly with the door, go to Step 5.
  - Option B: If the mounting plate is not fastened tightly to the door, use an additional screw.

What is required: Mounting Plate, Mounting Plate Screws, Deadbolt Screw / Strike Screw, Screwdriver (not provided)

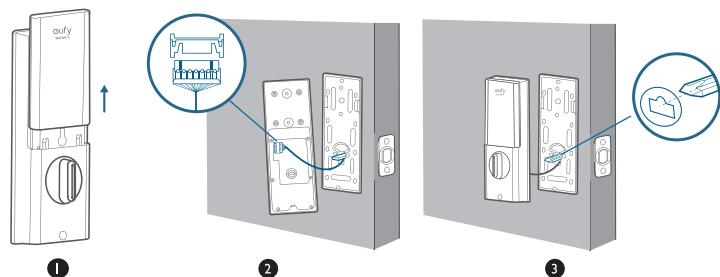
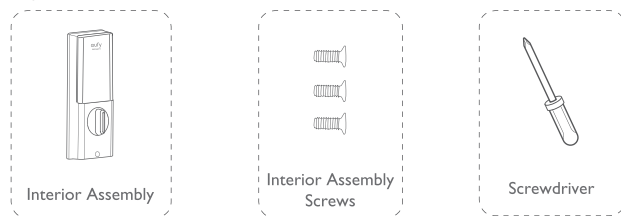


## Step 5: Install the Interior Assembly

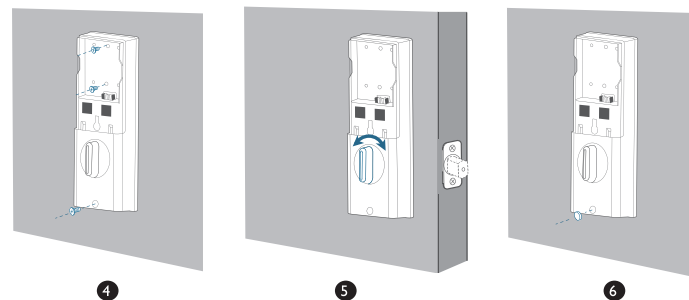
To install the Interior Assembly:

1. Remove the battery cover.
2. Match the wire connector from the circuit board with the one from the interior assembly as illustrated. The wire connector can only be plugged into the socket in one way. Make sure you match the dot on the connector with the pin on the circuit board correctly.
3. Align the tailpiece with the key cylinder.
4. Secure the provided screws into the interior assembly.
5. Turn the thumbturn to check whether the deadbolt is retracted. If the deadbolt does not work smoothly, adjust the screws and install the mounting plate again.
6. Use the plug to cover the screw hole at the bottom of the Smart Lock Touch & Wi-Fi.

What is required: Interior Assembly, Interior Assembly Screws, Screwdriver (not provided)



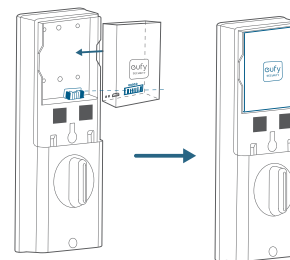
|| English



**Note:** Check carefully whether the wire is stuck or tangled. If the wire is stuck, re-install the Interior Assembly.

## Step 6: Install the Battery

Align the pin connector on the battery with the pin as illustrated below and slide the battery into the battery compartment.



You are all set! Follow the in-app instructions to set up the Smart Lock Touch & Wi-Fi.

**Note:** Do not close the battery cover. This is to make sure you can scan the QR code in order to access information about Smart Lock Touch & Wi-Fi, as well as easily access the Setup button.

English 12



# SETTING UP THE SMART LOCK TOUCH & WI-FI

## Pair Your Phone with Smart Lock Touch & Wi-Fi

**Note:** The lock will not lock automatically before the setup has completed. To avoid being locked outside, pair your phone with the Smart Lock Touch & Wi-Fi and set an access code for unlocking the door.

To pair your phone with Smart Lock Touch & Wi-Fi:

1. Scan the QR code on the back of the Smart Lock Touch & Wi-Fi to get Bluetooth information of the Smart Lock Touch & Wi-Fi. Follow the on-screen instructions to complete the setup.
2. Pair your phone with the Smart Lock Touch & Wi-Fi via Bluetooth. Your phone will search for the Smart Lock Touch & Wi-Fi's Bluetooth and then connect.
  - Waiting to pair: The LED indicator flashes blue.
  - Paired: the LED indicator turns steady blue for 5 seconds.

**Note:**

- The user that is paired is the only administrator and can authorize other users to use the lock.
- Press and hold the Setup button again the lock will return to default settings. All the settings will be erased and need to be reset. DO NOT press and hold the button if unnecessary.



## Calibrate Smart Lock Touch & Wi-Fi

Once the Smart Lock Touch & Wi-Fi is successfully paired with your phone, the eufy Security app will prompt you to calibrate the door lock.

Make sure you close the door before calibrating the Smart Lock Touch & Wi-Fi. When the door is closed, the door sensor will record the exact locked position so that the door will automatically lock if the door is properly closed.

13 English

To calibrate the Smart Lock Touch & Wi-Fi, follow the on-screen instructions to complete the process.

- Successfully calibrated: The  button LED turns white for 2 seconds and then off. The voice prompt "calibration complete" can be heard.
- Fail to calibrate: The  button and status LED turn solid red for 2 seconds and then off. The voice prompt "The deadbolt is stuck. Please return to the installation, and try again." can be heard.

**Note:** If the eufy Security app fails to calibrate the lock, check whether the door has been installed correctly and try again.

## Set Access Code

After the lock is calibrated, the eufy Security app will prompt you to name your Smart Lock Touch & Wi-Fi and set an access code. Follow the on-screen instructions to complete the process. The access code should be 4 to 8 characters.

**Note:** If you do not set the passcode and click "Return", a message "initialization unsuccessful" will appear. Click the card to enter the Smart Lock Touch & Wi-Fi page. The message "Continue or remove the device" will appear.

## Set Scramble Passcode

A scramble passcode is a series of random numbers that you can input to prevent others from spying on your actual access code. It is ideal for those living in a condo with neighbors passing by all the time.

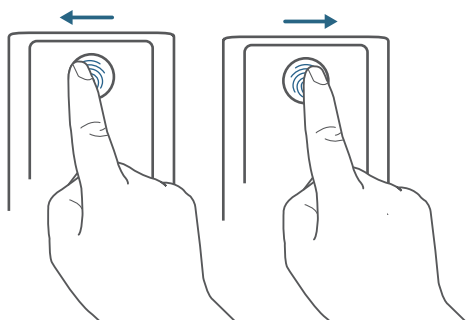
To set a scramble passcode, go to Settings on the eufy Security app. The scramble passcode should be no more than 12 digits in total.

English 14

## Register Your Fingerprint

After setting an access code, the eufy Security app will prompt you to register your fingerprint. The fingerprint light will breathe white.

1. Register your fingerprint by placing it on the touch screen and check whether your fingerprint is valid. If yes, your fingerprint will be recorded. You must register your fingerprint 8 times. Each time you register a fingerprint successfully, the corresponding number will light on. For example, you successfully register fingerprints 8 times, the number 1 ~ 8 are lighted.



2. If the app fails to record your fingerprint, the fingerprint breathing light will breathe red once and a prompt tone will be heard. Move your finger slightly and try again.
3. After the fingerprint is successfully registered, the fingerprint breathing light will turn off.

### Note:

- People aged over 70 and children under 5 are recommended to use the keypad to set access codes.
- It is recommended to use your thumb, index finger, or middle finger to register your fingerprint.
- You can skip this step during the initialization process and register fingerprint later.

## Other Settings

The Smart Lock Touch & Wi-Fi supports many features that you can configure using the eufy Security app. The features are listed as follows:

- Add up to 100 users
- Set language: English
- Synchronize time for lock with the time on your phone
- Customize voice volume for the Smart Lock Touch & Wi-Fi
- Customize the time duration for automatic door-locking. You can set the countdown duration to be up to 3 minutes.
- Enable or disable sound effect
- Automatically record door opening and locking log
- Failsafe mode: After 5 consecutive failed attempts to register your fingerprint, the fingerprint scanner will be disabled, however, the access code can still be used.
- After 5 consecutive failed attempts to input the access code, neither access code nor the fingerprint scanner can be used.
- Check device information

## OTA Update (Optional)

If your device requires an OTA update, the app will force you to update OTA. Follow the on-screen instructions to complete the process. If no OTA update is required, the app will automatically skip this process and enter “the setup complete” page.

### Note:

- When the battery power level is lower than 25%, OTA update is not allowed.
- After OTA is successfully updated, wait for 1 minute and then reboot the Smart Lock Touch & Wi-Fi.

# BASIC OPERATIONS

## Unlock the Door





You can unlock the door using a valid access code, fingerprint, eufy Security app, or the provided key.

To unlock the door:

### Option 1: Use the fingerprint scanner

1. Scan your fingerprint and wait until the fingerprint breathing light breathes blue once. The door will be unlocked within 1 second.
2. If not, the light will breathe red once. Repeat the steps to unlock.
3. If you fail to unlock the door after 5 attempts using the fingerprint scanner, the Smart Lock Touch & Wi-Fi will be locked. Use the access code instead to unlock.

### Option 2: Use the access code

1. Press any key or tap the touchscreen to wake up the keypad. The keypad will light on.
2. Enter your access code. If the access code is correct, press the  button. The door will unlock. If the access code is wrong, press  and enter a new code.
  - Valid access code: The  button turns solid white for 2 seconds.
  - Access code error: The error  button blinks red for 2 seconds. A beep will be heard.

If you fail to unlock the door for 5 consecutive times using the access code, you can also follow the in-app instructions or use the provided key to unlock the door.

### Option 3: Use the eufy Security app

1. Open the eufy Security app. The app will search for Smart Lock Touch & Wi-Fi Bluetooth and connect.
2. Follow the on-screen instructions on the eufy Security app to unlock the door.

### Option 4: Use the provided key

If you fail to unlock the door after 5 consecutive times using the access code, use the provided key to unlock the door.





## Lock the Door

There are several options to lock the door.

### Option 1: Use the fingerprint scanner

1. Scan your fingerprint and wait until the fingerprint breathing light breathes blue once. The door will be locked within 1 second.
2. If not, the light will breathe red once. Repeat the steps to lock.
3. If you fail to lock the door after 5 attempts using the fingerprint scanner, the Smart Lock Touch & Wi-Fi will remain unlocked. Use the access code instead to lock the door.

### Option 2: Use the access code

1. Press any key or tap the touchscreen to wake up the keypad. The keypad will light on.
2. Enter your access code. If the access code is correct, press the  button. The door will be locked. If the access code is wrong, press  and enter a new code.
  - Valid access code: The  button turns solid white for 2 seconds.
  - Access code error: The error  button blinks red for 2 seconds. A beep will be heard.

### Option 3: Use the eufy Security app


1. Open the eufy Security app. The app will search for Smart Lock Touch & Wi-Fi Bluetooth and connect.
2. Follow the on-screen instructions on the eufy Security app to lock the door.

### Option 4: Use automatic lock

1. On the eufy Security app, set the “Automatic lock” option to On, and set the time duration for the door to be locked.
2. When the door is closed, the Smart Lock Touch & Wi-Fi will detect whether the door is locked. If not, the door will be locked automatically after the time duration you set.

### Option 5: One-touch lock

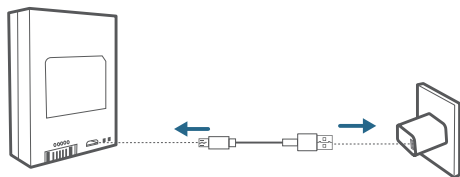
On the eufy Security app, the “one-touch lock” option is set to **On** by default. To use one-touch lock:

1. Set the “one-touch lock” option to **On**.
2. Press and hold the  button to lock the door.

## Charge Smart Lock Touch & Wi-Fi

To charge Smart Lock Touch & Wi-Fi:

1. Take the battery out.
2. Plug one end of a micro USB cable into the micro USB port of the battery and the other end to a charger. The red LED indicator will light up.



3. After the battery is fully charged, the blue LED indicator will light up.

## Restart Smart Lock Touch & Wi-Fi

Press the Reboot button on the bottom to restart the Smart Lock Touch & Wi-Fi. The system will reboot.

## SPECIFICATIONS

Chipset: Realtek lower-power SOC BLE; BT 5.0;

Maximum access code: 100

Maximum fingerprint inputs: 50

Hardware encryption: ECC asymmetric encryption chip

Software encryption: AES 128

Waterproof: IP65 (Exterior Assembly)

Numeric keypad: touchscreen keypad

Lock material: zinc alloy

Battery capacity: 10,000mAh

Battery life: 365 days (if open and close the door for 10 times per day)

Times to unlock and lock: 250,000 times (mechanical)

19 English

## TROUBLESHOOTING

1. How can I unlock the door if the Smart Lock Touch & Wi-Fi doesn't work?
  - ① Press the Reboot button on the bottom to restart the Smart Lock Touch & Wi-Fi.
  - ② Use the provided key to unlock.
2. How can I unlock the door if the Smart Lock Touch & Wi-Fi's battery runs low?
  - ① Follow the steps mentioned in the "Charge Smart Lock Touch & Wi-Fi" section to charge the battery.
  - ② After the battery is fully charged, insert it into the battery compartment.
  - ③ Use the fingerprint scanner or access code to unlock.
3. How to delete the registered fingerprint and access code?

Open your eufy Security app, and repeat steps mentioned in "Pair Your Phone with the Smart Lock Touch & Wi-Fi" to pair. Then you can delete the registered fingerprints and access code.

4. The Smart Lock Touch & Wi-Fi ringtone is too loud.

Open the eufy Security app and pair your phone with your Smart Lock Touch & Wi-Fi. You can set the ringtone volume on the eufy Security app.

5. Why the Smart Lock Touch & Wi-Fi's battery drains so quickly?
  - Make sure you use the standard battery.
  - Check whether the Smart Lock Touch & Wi-Fi is installed properly.
  - Check whether the Smart Lock Touch & Wi-Fi can be locked or unlocked smoothly using the thumbturn; If not, detach and install the Smart Lock Touch & Wi-Fi again.
  - Check whether water spills in the Interior Assembly. Exposure to water will drain the battery quickly.
  - Contact Customer Service for technical support via eufy Security app or email.

For troubleshooting, check the installation video and instructions. Or you can contact Customer Service staff for technical support via via the eufy Security app or email.

English 20

## IMPORTANT SAFETY INSTRUCTIONS

- DO NOT attempt to install or repair the product without authorization.
- Do not use excessive force or sharp objects to press lock buttons, as this can damage the product.
- Make sure the door is completely closed when going outside. The manufacturer does not assume responsibility for any harm caused by your improper closing of the door.
- Replace batteries when the low battery alarm is heard.
- Change your access code regularly to ensure security.

## NOTICE

### FCC Statement

This device complies with Part 15 of the FCC Rules. Operation is subject to the following two conditions: (1) this device may not cause harmful interference, and (2) this device must accept any interference received, including interference that may cause undesired operation.

**Warning:** Changes or modifications not expressly approved by the party responsible for compliance could void the user's authority to operate the equipment.

**Note:** This equipment has been tested and found to comply with the limits for a Class B digital device, pursuant to Part 15 of the FCC Rules. These limits are designed to provide reasonable protection against harmful interference in a residential installation.

This equipment generates uses and can radiate radio frequency energy and, if not installed and used in accordance with the instructions, may cause harmful interference to radio communications. However, there is no guarantee that interference will not occur in a particular installation. If this equipment does cause harmful interference to radio or television reception, which can be determined by turning the equipment off and on, the user is encouraged to try to correct the interference by one or more of the following measures: (1) Reorient or relocate the receiving antenna. (2) Increase the separation between the equipment and receiver. (3) Connect the equipment into an outlet on a circuit different from that to which the receiver is connected. (4) Consult the dealer or an experienced radio / TV technician for help.

### FCC Radio Frequency Exposure Statement

The device has been evaluated to meet general RF exposure requirements. The device can be used in fixed / mobile exposure condition. The min separation distance is 5 mm.

**Notice:** Shielded cables

All connections to other computing devices must be made using shielded cables to maintain compliance with FCC regulations.

The following importer is the responsible party.

Company Name: POWER MOBILE LIFE, LLC

Address: 400 108th Ave NE Ste 400, Bellevue, WA 98004-5541

Telephone: 1-800-988-7973

FCC ID:2AOKB-T8520

# CUSTOMER SERVICE

## Warranty



Smart Lock Touch & Wi-Fi: 36-Month Limited Warranty

Mechanical part: 36-Month Warranty

Electrical Part: 18-Month Warranty



+1 (800) 988 7973 Mon-Fri 9AM-5PM (PT)

+44 (0) 1604 936 200 Mon-Fri 6AM-11AM (GMT)

+49 (0) 69 9579 7960 Mon-Fri 6:00-11:00



Customer Support: [support@eufylife.com](mailto:support@eufylife.com)

Anker Innovations Limited

Room 1318-19, Hollywood Plaza, 610 Nathan Road, Mongkok, Kowloon,  
Hong Kong



@EufyOfficial



@EufyOfficial



eufyofficial