

RACE CAR COMPETITION STORM RIDERS



4X4 Four Wheel Drive
specialty MOUNTAIN CLIMBING
UP TO 30km/h MAXIMUM SPEED
2.4GHz Version

⚠ Caution

- (1). Contains small parts not suitable for use around small children.
- (2). Please operate in an open field without any RF interference.
- (3). When transmitter is low in power, please stop and change batteries immediately.
- (4). Exhausted batteries should be recycled properly and not discarded.
- (5). Please store the car and the transmitter in a dry and cool environment.
- (6). Keep away from fire, hot or humid environment.
- (7). If car battery is wet, be sure to wipe and dry it completely to avoid any damage.

1. Product Configuration



Pictures for reference only, please subject to the actual products.

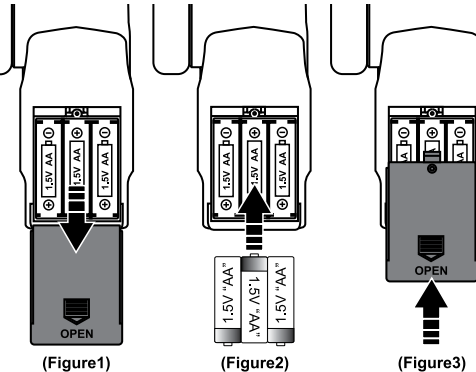
2. Install Transmitter Batteries

Replacing batteries of the transmitter

1. Remove the battery cover by loosening the screw on the back of the transmitter with the included screwdriver. (Figure1)
2. Install 3x1.5V AA batteries (not included) in correct polarities. (Figure2)
3. Close the battery cover and tighten the screw. (Figure3)

⚠ Notice:

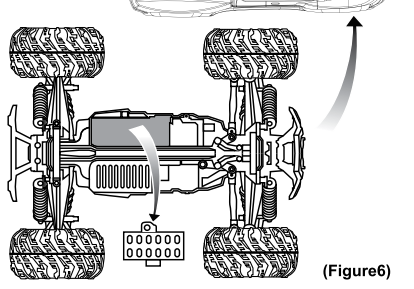
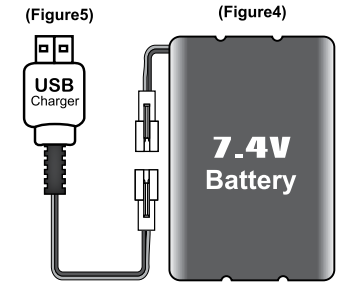
1. When installing batteries, please be sure to match the polarities labeled on the battery holder.
2. Do not mix old and new batteries.
3. Do not mix different type of batteries.
4. Please remove the batteries if long time do not use the transmitter.



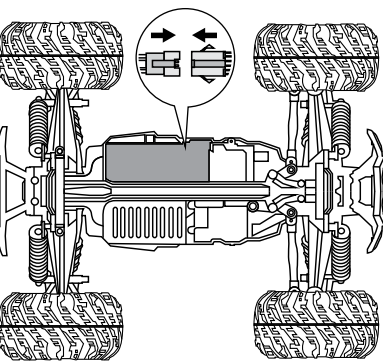
-1-

3. Charge and Install Rechargeable Battery Pack

- (1). a) Insert the USB charging cable to the USB port of the computer or mobile phone charger so that the red USB indicator light is kept on.
b) Connect the USB charging cable (Figure5) to the battery pack (Figure4) as shown in the picture so that the green USB indicator light flashes slowly, indicating that it is charging.
c) About 3 hours later, the green indicator light will remain on, indicating that the charging is completed.
- (2). Remove the car sell and loosen the clips of the battery cover on the chassis of the car, then remove the battery cover. (Figure6)



- (3). Connect the sockets of the rechargeable battery pack within the car ensuring the correct polarities, then insert the battery into the battery compartment. (Figure7)

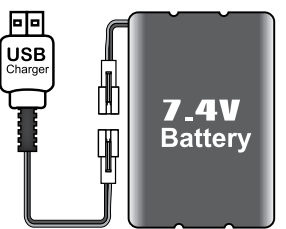


- (4). Close and secure the battery cover by tightening the clips. (Figure8)

• Press the power switch of the car for 0.5 seconds to turn on the power, and press the power switch of the car for about 3 seconds to turn off the power.

4. Charger/Battery Pack/Circuit board Precautions

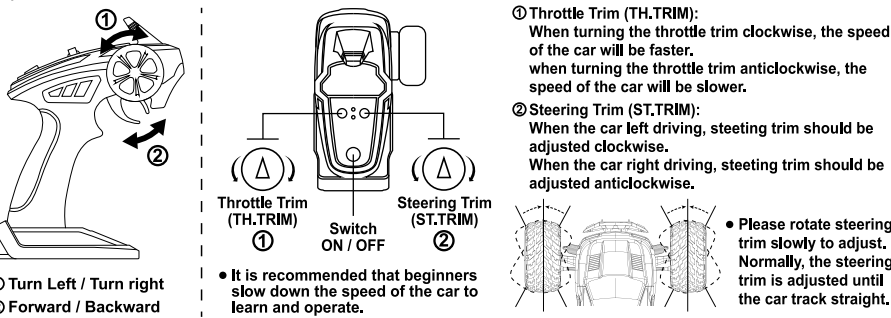
- (1) To prevent the Li-ion battery pack from being charged over voltage, which could lead to damage or explosion, the charger uses a voltage limit protection device. And to maintain the battery pack's charging capacity and performance, we suggest not to charge it continuously for more than 24 hours.
- (2) The battery uses a low voltage and power over-discharge protection device. When the battery is over-discharged, a re-charged is required to active the battery again. It is recommended that you remove the battery and turn the switch to "off" position when the car is not being used.
- (3) The circuit board uses a overheating protection function. When the circuit board is overheated, the car will be disabled (not moving forward/backward) for 3-6 seconds before being restored.



-2-

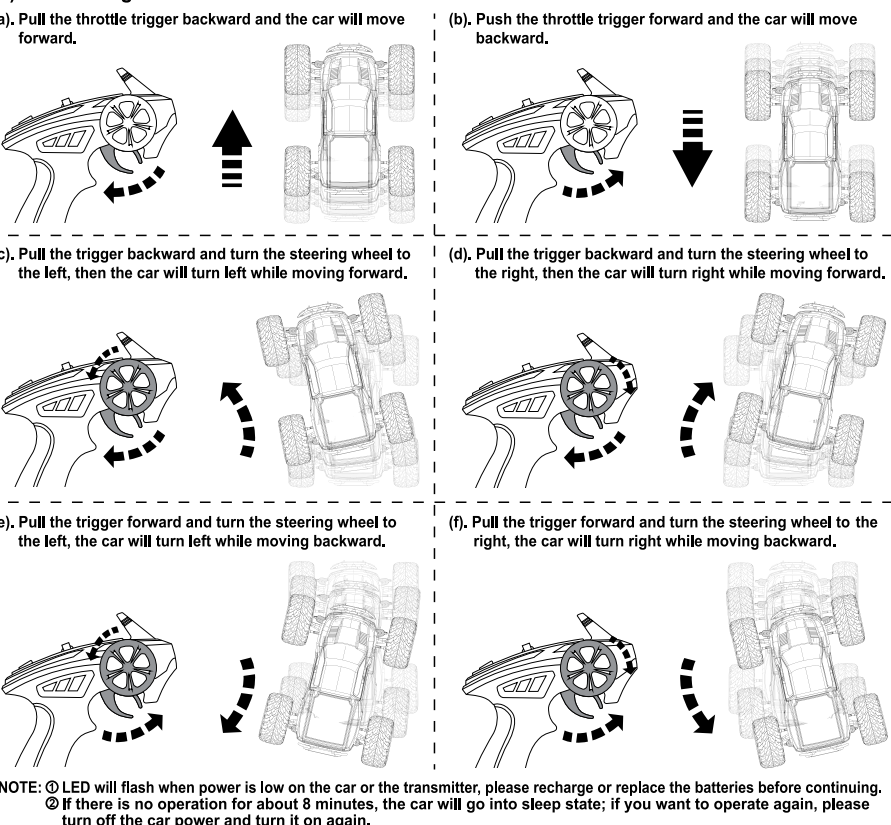
5. Control Methods

(1). Function introduction of transmitter



- (2). Pair the frequency of the car and the transmitter
(a). When being paired for the first time, both the car and the transmitter have to be turned on within 3 seconds to pair the frequency. (During pairing, the LEDs on the car and the transmitter will flash; they will turn solid once pairing is successful)
(b). When pairing the frequency, please don't let anything touch accelerator, ensure that the accelerator position does not appear deviation.
(c). In case pairing is not successful, please turn off both the car and the transmitter, and repeat the pairing process above.

(3). Controlling the car



NOTE: ① LED will flash when power is low on the car or the transmitter, please recharge or replace the batteries before continuing.
② If there is no operation for about 8 minutes, the car will go into sleep state; if you want to operate again, please turn off the car power and turn it on again.

-3-

⚠ Notice

- Please note the battery polarities when installing or replacing batteries
- Non-rechargeable batteries can not be charged
- Remove rechargeable battery pack from car before charging
- Charge the battery under adult supervision
- Do not mix new and old batteries, or batteries of different types
- Remove batteries from car once they are exhausted
- Watch for short circuits at power terminals
- Touching the transmitter antenna while operating the car can affect the remote control distance; broken antennas should be handled by an adult
- This car is equipped with powerful driving forces. When moving at high speed, please do not try to break abruptly due to inertia.
- When the car move slowly, it indicates power is low. Please recharge following charging instructions.
- When charging, please ensure power sockets are connected properly.
- While not used for a long time, please remove batteries from the car and the transmitter.
- Unpack the car under adult supervision.
- Keep this manual for future reference.



WARRANTY INFORMATION

Our product is guaranteed to be free from manufacturing defects for a period of 12 Months. If your product becomes defective during this period, Electus Distribution will repair, replace, or refund where a product is faulty; or not fit for intended purpose. This warranty will not cover modified product; misuse or abuse of the product contrary to user instructions or packaging label; change of mind and normal wear and tear. Our goods come with guarantees that cannot be excluded under the Australian Consumer Law. You are entitled to a replacement or refund for a major failure and for compensation for any other reasonably foreseeable loss or damage. You are also entitled to have the goods repaired or replaced if the goods fail to be of acceptable quality and failure does not amount to a major failure. To claim warranty, please contact the place of purchase. You will need to show receipt or other proof of purchase. Additional information may be required to process your claim. Any expenses relating to the return of your product to the store will normally have to be paid by you. The benefits to the customer given by this warranty are in addition to other rights and remedies of the Australian Consumer Law in relation to the goods or services to which this warranty relates.

This warranty is provided by:
Electus Distribution
Address 46 Eastern Creek Drive, Eastern Creek NSW 2766
Ph. 1300 738 555



UP TO 30km/h MAXIMUM SPEED
2.4GHz Version
8+ AGES
Professional Steering hobby Style body