

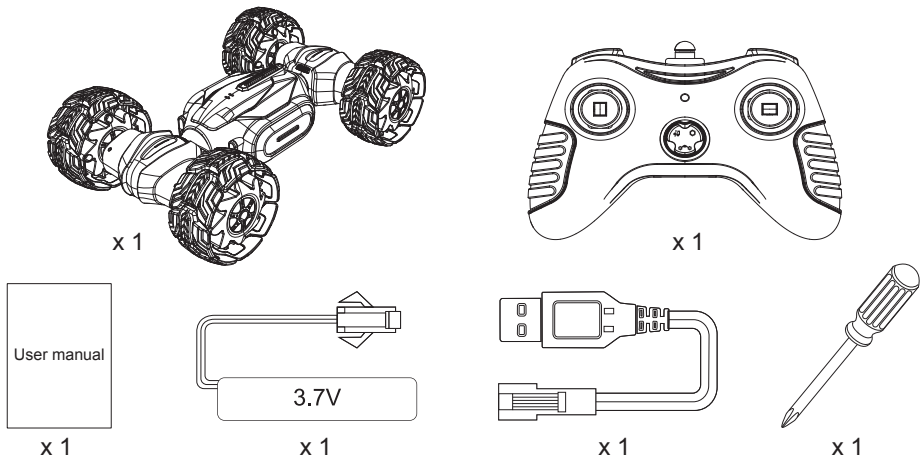
# User manual

## GT4298

### SAFETY INSTRUCTIONS:

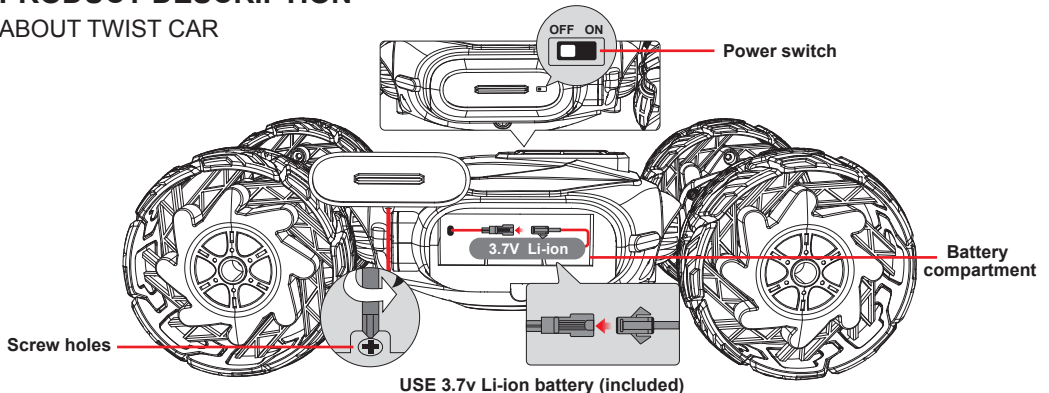
The product contains electronic components. Do not use the product in damp or wet areas.  
Do not mix alkaline batteries with ordinary batteries or rechargeable batteries (Nicd).  
Do not mix old and new batteries.  
Only use batteries of the type recommended by the manufacturer.  
Insert the batteries with the correct polarity.  
Never short-circuit the battery terminals.  
Dispose of spent batteries in accordance with local regulations.  
Do not burn batteries-risk of explosion and/or leakage.

### PACKAGING CONTENTS



### PRODUCT DESCRIPTION

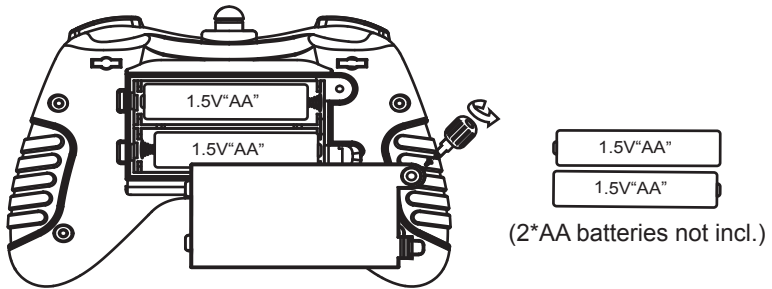
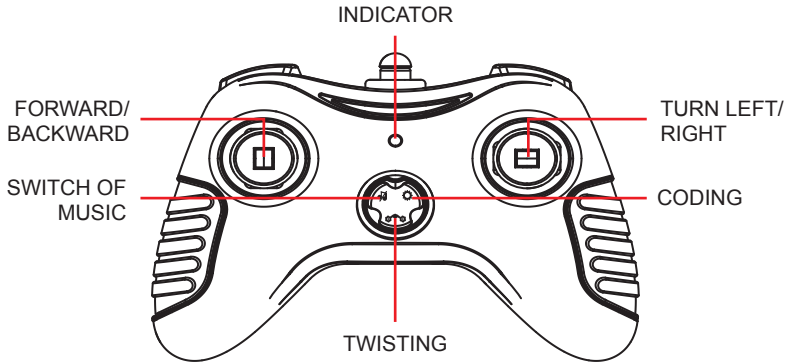
#### ABOUT TWIST CAR



#### INSTALL THE BATTERIES OF RC CAR

1. Unscrew the battery cover.
2. Open the battery compartment and connect li-ion battery with rc car.
3. Close the battery cover and tighten the screws.

## ABOUT CONTROLLER

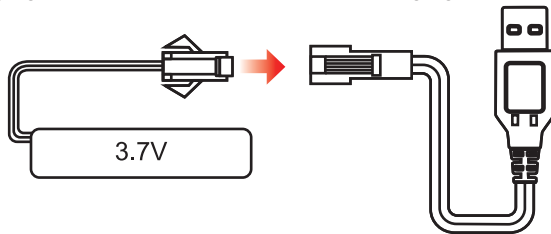


## INSTALL THE BATTERIES OF CONTROLLER

1. Unscrew the battery cover.
2. Open the battery cover and insert 2\*AA battery in correct polarity.
3. Close the battery cover and tighten the screws.

## HOW TO CHARGE

1. Unscrew the battery compartment and take out the battery.
2. Connect the battery with USB charging cable
3. Connect the charging cable to suitable USB port for charging.

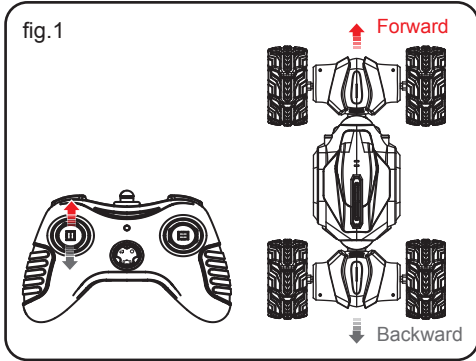


## PAIRING

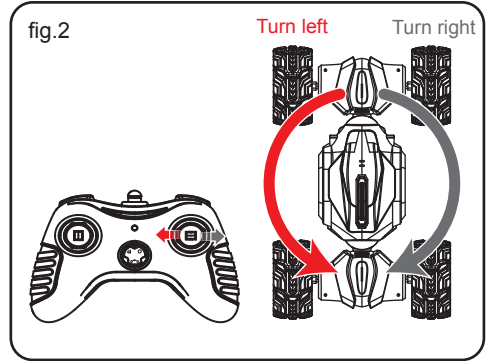
Press the power switch to turn on the RC car then press the power button of remote controller to pair, when indicator of controller keep stable, which means pairing successfully.

**Note: make sure batteries for rc car and controller have been assembled.**

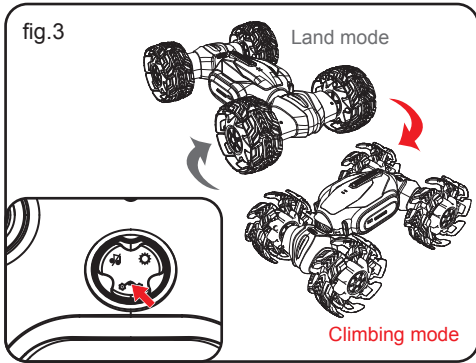
# HOW TO PLAY



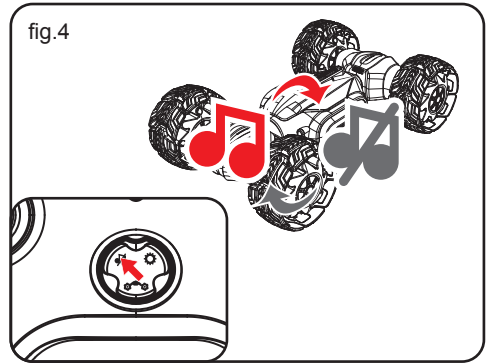
Forward/Backward.  
Press “Forward/backward” button. (fig.1)  
to move Forward or backward.



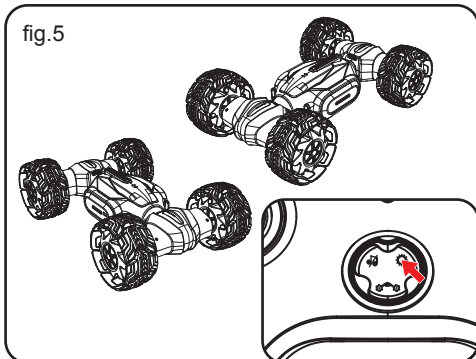
Turn left/Right.  
Press “turn left/right” button to turn left/right.  
(fig.2)



One key to twist.  
Press button (fig.3) to deformation from land  
Mode to climbing mode, or from climbing  
Mode to land mode.



Press button (fig.4) to turn on/off the music.



Press button (fig.5) to enter coding mode,  
press it again and it will demonstrate with  
coding route.

## **WARRANTY INFORMATION**

Our product is guaranteed to be free from manufacturing defects for a period of 12 Months.

If your product becomes defective during this period, Electus Distribution will repair, replace, or refund where a product is faulty; or not fit for intended purpose.

This warranty will not cover modified product; misuse or abuse of the product contrary to user instructions or packaging label; change of mind and normal wear and tear.

Our goods come with guarantees that cannot be excluded under the Australian Consumer Law. You are entitled to a replacement or refund for a major failure and for compensation for any other reasonably foreseeable loss or damage. You are also entitled to have the goods repaired or replaced if the goods fail to be of acceptable quality and failure does not amount to a major failure.

To claim warranty, please contact the place of purchase. You will need to show receipt or other proof of purchase. Additional information may be required to process your claim.

Any expenses relating to the return of your product to the store will normally have to be paid by you.

The benefits to the customer given by this warranty are in addition to other rights and remedies of the Australian Consumer Law in relation to the goods or services to which this warranty relates.

This warranty is provided by:

Electus Distribution

Address 46 Eastern Creek Drive, Eastern Creek NSW 2766

Ph. 1300 738 555