



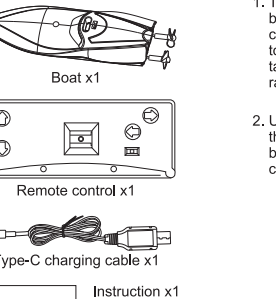
GT4083



INSTRUCTION MANUAL

Please read this instruction manual carefully before use.
Please keep this manual for future reference.

PACKAGE CONTENTS



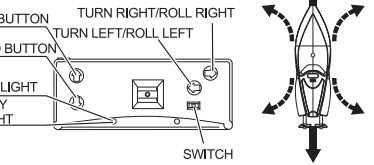
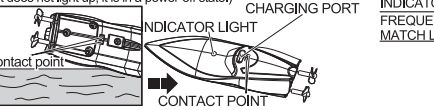
PREPARE

1. Take out the remote control and racing boat from the package can, then drag to the right to take out the racing boat.
2. Use a Phillips screwdriver to unscrew the screw by counterclockwise and open the battery cover on the back of the remote control in the direction of the arrow.
3. Insert 2 "AA" batteries according to the correct polarity, close the battery cover and tighten the screws.

OPERATION

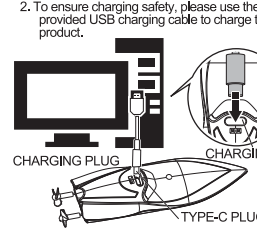
Note: There is no switch on the hull
ON is when the contact point with water (as shown in Figure 1),
Off is when the contact point is dry (Figure 1, Figure 2).

1. When using, first put the rowing boat into the water. At this time, the rowing boat is powered on and the indicator light flashes. Turn on the switch of the remote control and the indicator light on the boat will always be on, indicating that the frequency matched successfully. Keep your hands away from the propeller and make sure there are no obstacles around the propeller to prevent injuries when the propeller rotates at high speed. If the operation stops, please turn off the remote control switch, take the racing boat out of the water, and wipe the water stains on the remote control boat with a cloth. (As shown in Figure 1 and Figure 2, when the two contact points of the rowing boat are wiped dry and the rowing boat indicator light does not light up, it is in a power-off state.)
2. Functions of remote control buttons:
(1) Press the button on the remote control to start the rowing boat. The function indicator light on the remote control will light up as you press the button on the remote control. (Press any button on the remote . The function indicator light in the remote control will light up.)
(2) When pressing the forward/backward button, the rowing boat can move forward/backward.
(3) When pressing the forward button and pressing the left/right button at the same time, the rowing boat can turn left/right.
(4) When the left/right turn button is pressed alone, the rowing boat can roll left/right



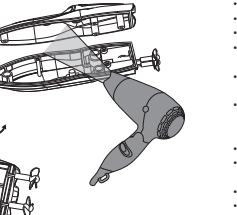
CHARGE

1. The USB charging power cord has two terminals. Insert the square end into the socket hole in the hull, as the picture shows. The light turns on when charging and turns off when fully charged. A complete charging cycle takes about 15-20 minutes.
2. To ensure charging safety, please use the provided USB charging cable to charge the product.



WARM TIPS

If the boat is not working properly due to abnormal operation, or if water has accidentally entered the hull, the boat will not work properly. If the boat does not work properly, stop using it immediately and use a Phillips screwdriver to unscrew the 4 screws on the bottom of the boat in a counterclockwise direction, gently separate the bottom of the boat from the surface of the boat, and use an electric hair dryer to dry the boat. Re-screw the screws on boat, then can use it.



CAUTION

- The toy boat itself uses 3.7V rechargeable lithium-ion batteries. The remote control uses two 1.5V AA batteries;
- Please pay attention to the polarity when installing or replacing batteries;
- Non-rechargeable batteries should not be charged;
- Adult supervision is required when charging rechargeable batteries;
- Rechargeable batteries should be removed from the toy before charging;
- Do not use old, new or different types of batteries;
- Remove exhausted batteries from the toy;
- The power terminals should not be short-circuited.
- This racing boat is equipped with strong power, when in high speed, please pay special attention when using the boat as it cannot be braked sharply due to inertia.
- When the speed of the boat slows down, it means that the power of the boat is not enough. Please recharge the boat to be charged as above.
- If the battery of the remote control is low, the racing boat can not be charged and the charging indicator is dimmed or does not light up, replace the batteries with new ones.
- Please recognize the charging plug and charging port when charging.
- When not in use for a long time, please remove the batteries in the remote control, turn the power switch of the rowing boat to "OFF" position.
- Be guided by an adult when unpacking.
- Retain this information for future reference.
- Boat needs to be wiped dry after use & before charging.

WARRANTY

Our product is guaranteed to be free from manufacturing defects for a period of 12 Months. If your product becomes defective during this period, Electus Distribution will repair, replace, or refund where a product is faulty; or not fit for intended purpose. This warranty will not cover modified product; misuse or abuse of the product contrary to user instructions or packaging label; change of mind and normal wear and tear. Our goods come with guarantees that cannot be excluded under the Australian Consumer Law. You are entitled to a replacement or refund for a major failure and for compensation for any other reasonably foreseeable loss or damage. You are also entitled to have the goods repaired or replaced if the goods fail to be of acceptable quality and failure does not amount to a major failure. To claim warranty, please contact the place of purchase. You will need to show receipt or other proof of purchase. Additional information may be required to process your claim. Any expenses relating to the return of your product to the store will normally have to be paid by you. The benefits to the customer given by this warranty are in addition to other rights and remedies of the Australian Consumer Law in relation to the goods or services to which this warranty relates.

This warranty is provided by:
Electus Distribution
Address 46 Eastern Creek Drive, Eastern Creek NSW 2766
Ph. 1300 738 555