

**8L**  
**Console Fridge/Freezer**  
**GH-1611**  
**User Manual**  
Version 2.0

## FEATURES

- Wireless charging for mobile phone
- DC power connection
- High-efficiency DC compressor and conversion module
- Dual mode operation (Max & Economy)
- Digital temperature display with adjustable control
- 3 Year Warranty
- 3-stage low voltage battery protection
- USB port to charge USB devices

## BOX CONTENTS

- 1 x Portable Fridge/Freezer
- 1 x 12/24V Car Cigarette Power Lead

## SPECIFICATIONS

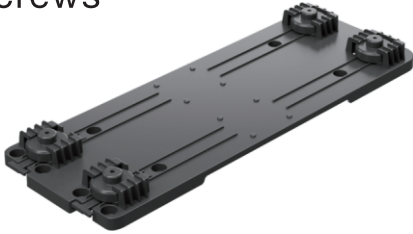
Input Voltage:	12/24VDC
Average Power Consumption:	45W
Power Consumption:	0.25kw.h/24hr
Rated Current:	3.75A/1.875A
Temperature Range:	-20°C to +20°C (with ambient temperature at 25°C)
Refrigerant:	R134a
Insulation:	100% CFC & HFC free PU Foam insulation

## SAFETY

- The installation of DC power sources in a boat must be handled by a qualified electrician
- Make sure to connect power to the suitable voltage socket
- No electrical devices are to be used inside the product
- The product can be powered on only after being unpacked and put on a flat level surface for over 6 hours
- Fridge operating angle:- The fridge can be operated indefinitely at up to 5 degrees, and can be operated at between 6 and 45 degrees for up to 30mins.
- Product must be well ventilated. Ensure there is a minimum of 200mm clearance at the back, and 100mm around the sides
- The product should be in a well-ventilated space, away from heat sources. Try to avoid direct exposure to sunlight
- Keep product stable
- When there is water inside the tank, do not turn the product upside down to empty. Dry the water, do not soak in water
- Do not put metal in the air inlet vent, outlet vent, or gap
- Do not connect with power except 12/24VDC
- Do not soak the product in water or wash with water
- The product should not be repaired. If there is any issues please consult the place of purchase
- Turn off the product before cleaning to avoid electric shocks or other issues
- Keep product away from wet or humid places

## Installation instruction

- 1.Remove the original car console
- 2.Install the included GH1611 fridge base and tighten the screws



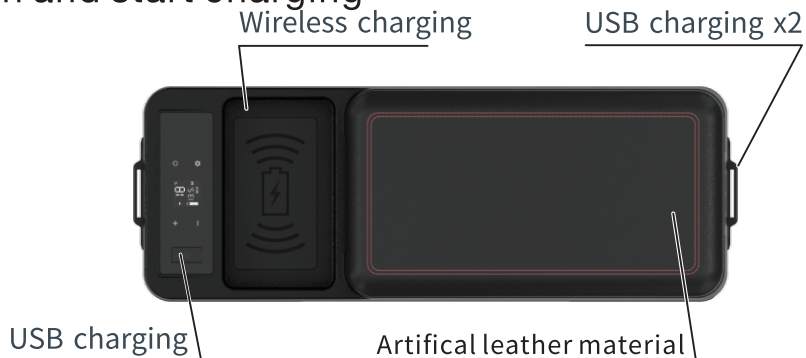
- 3.Install the GH1611 console fridge on the base and secure



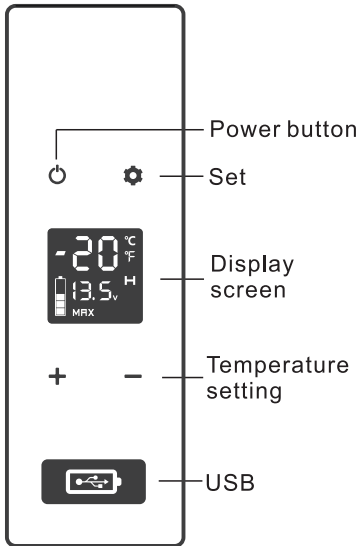
- 4.Connect the included DC power cable with the car cigar lighter

## Wireless charge instruction


- 1.Your mobile phone must have the function of wireless charging
- 2.Put your mobile phone in the center of wireless charge section and start charging




# OPERATION



## • How to Turn on the Fridge

1. Connect to power
2. Press button 
3. The internal temperature will display and the compressor will start

- **SET:** Press button  to enter different modes, ECO (Energy Saving Mode), and MAX (Fast Cooling Mode). Factory setting is MAX
- Press button + or - and set the temperature to 20°C ~ -20°C

## USING IN CAR

The product has a three-level battery protection function, which not only guarantees the normal operation of the product, but also protect the battery of the vehicle. When in the power-on state, long press SET button for 3 seconds and the display screen flashes H, select low voltage production L(ow), M(edium), and H(igh) by clicking SET button. The factory default is set to H(igh) protection.



H should be set when the product is connected to car power, and M or L should be set when it is connected to a portable battery or other back-up battery. Because of the different output voltages between vehicles, the battery gear can be set from H to M or from M to L if there is a voltage protection code F1 shown on the panel. The battery gear should be set to H if the product will keep working after turning off the car engine, or the product may drain the battery.

## CLEANING & MAINTENANCE

1. Do not wash the product with water or soak.
2. Please pull up the plug before cleaning the product to avoid electrical shock.
3. Drain the product simply by removing the plug at the bottom.
4. Clean it with a soft wet cloth.

If you will not use the product for a long period of time, ensure you:

1. Turn it off and pull up the plug.
2. Remove everything from inside it.
3. Drain the left over water through the outlet vent or dry it with a soft cloth.
4. Keep away from wet or humid places.

## TROUBLESHOOTING

- The product is not working:
  - Check the power supply is working
  - Check if the plug and socket are connected
  - Check the fuse
  - Check power switch on control panel is on
  - Compressor starts delay protection for 3 minutes after turning on
- Food inside the product is frozen:
  - Temperature is set too low
- Water flowing sound inside the tank:
  - Refrigerant is flowing, this is normal

- Water drops around the case or door gap:
  - When moisture in the air meets the lower temperature case, it will naturally become liquefied and condensed. Wipe away with a towel or soft cloth
- Code F1 displayed:
  - Low voltage protection, which can be solved by setting the battery protection button from H to M or from M to L
- Code F2 displayed:
  - Fan overload protection. Please turn off the product and restart it after 30 minutes. If the code displays again, please contact the place of purchase
- Code F3 displayed:
  - Compressor frequent start protection. Please turn off the product and restart it after 30 minutes. If the code displays again, please contact the place of purchase
- Code F4 displayed:
  - Compressor is overloaded or working at a low speed. Please turn off the product and restart it after 30 minutes. If the code displays again, please contact the place of purchase
- Code F5 displayed:
  - High temperature compressor module protection. Please move the product to a ventilated area and turn it off for 30 minutes then restart it. If the code displays again, please contact the place of purchase
- Code F6 displayed:
  - No parameter can be detected by the controller. Please restart the product. If the code displays again, please contact the place of purchase
- Code F7 / F8 displayed:
  - Temperature sensor error protection. Please check the sensor terminal

The warranty for this product is 3 years from date of purchase. During the warranty period the following are excluded from coverage:

- Intentional damage
- Damage by fire, flood, etc
- Damage or malfunction caused by incorrect usage and not following this user manual
- Damage or malfunction caused by disassembling