



DC3090

# Whip Car Antenna with Spiral LED Lights



**INSTRUCTION MANUAL**

## BOX CONTENTS



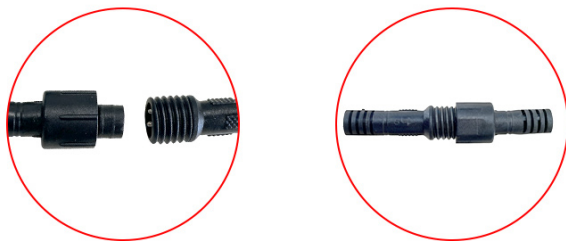
## USAGE INSTRUCTIONS

1

Route and connect the light cables to the rgb module making sure to avoid interference with suspension or any moving parts.

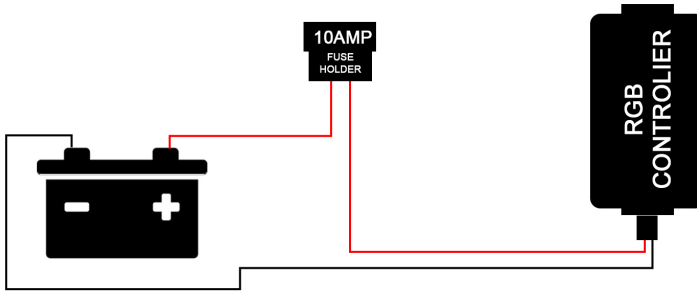


Plug in the quick connector on the whip light and controller.  
Take note that the arrows must be in line to connect and screw together.

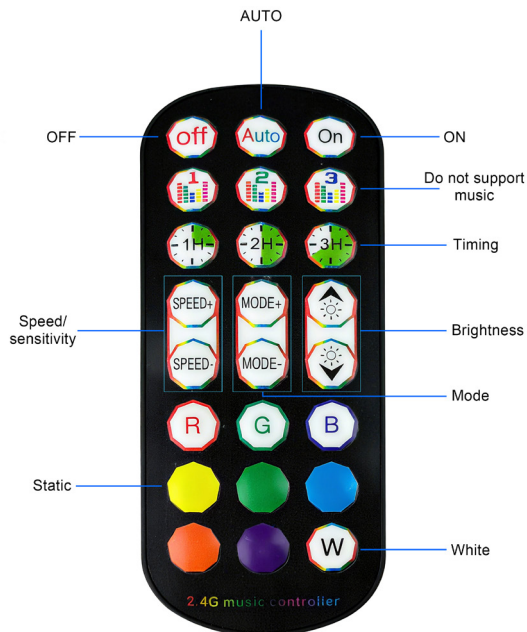


2

The RGB controller wiring to battery will require adding a 10AMP fuse on the Red Positive 12V+ wire connection. The Black Negative 12V - wire will need to be connected on the (-) negative terminal on battery. The RGB controller can then be operated by the included RF remote control or through the Bluetooth App.



## REMOTE CONTROLLER

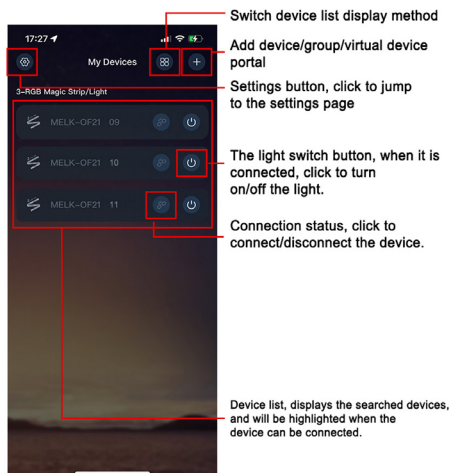


## BLUETOOTH APP & CONTROL

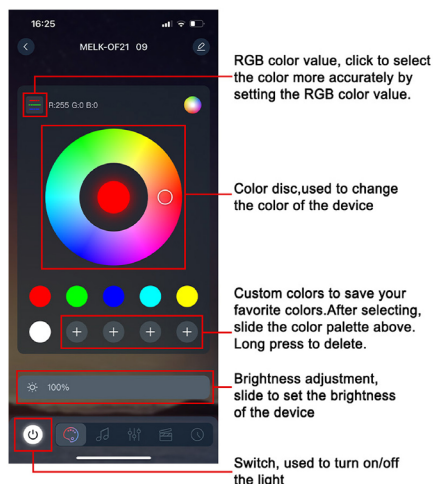


Scan application QR Code to go to Google or APP Store search for application LotusLamp X and download it. Open the App, press the + symbol, select the device called **MELK-OF21**

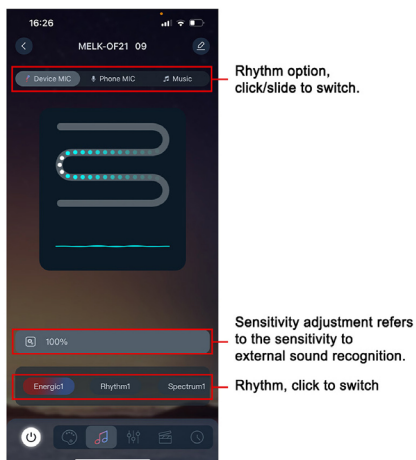
### My equipment ▶▶▶



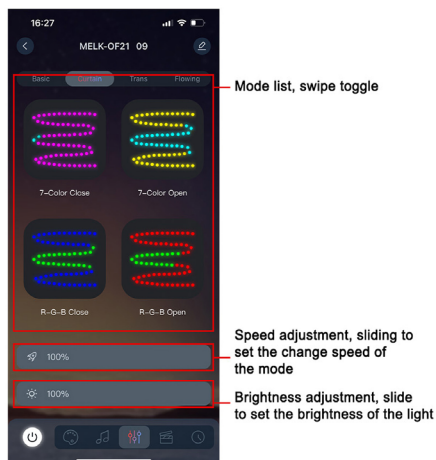
### Equipment details ▶▶▶



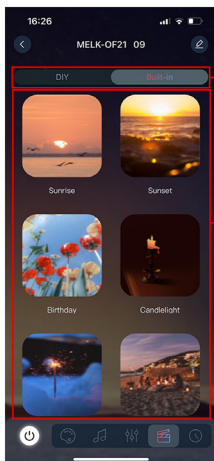
### Rhythm ▶▶▶



### Model ▶▶▶



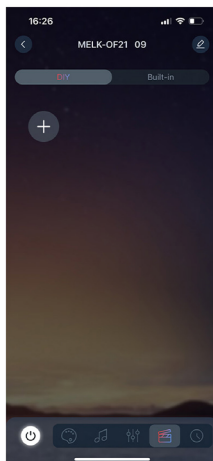
## Scene ▶▶▶



Built-in/DIY scene options, click to switch

Scene List

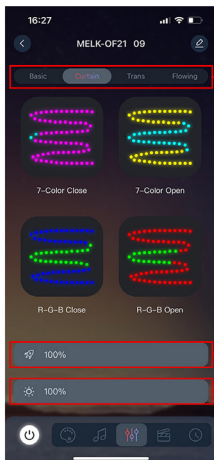
## DIY scene ▶▶▶



To add DIY scene, you need to set the number of points per segment, range [10, 20]

After setting, it will automatically display according to the total light strip level.

## Add DIY scenes ▶▶▶

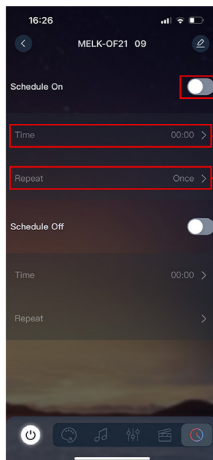


Action settings

Light speed

Light brightness

## Timing ▶▶▶

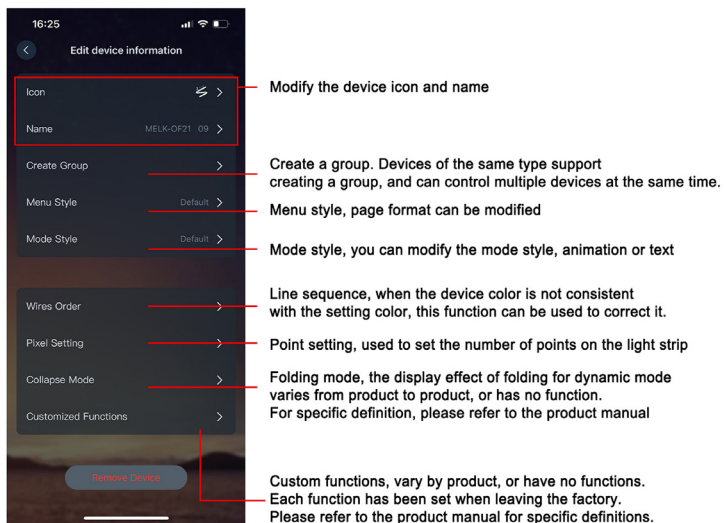


Switch

Time selection

Repeat, you can set any time from week to Sunday, support multiple selections

## Scene ▶▶▶





## WARRANTY INFORMATION

Our product is guaranteed to be free from manufacturing defects for a period of 12 Months.

If your product becomes defective during this period, Electus Distribution will repair, replace, or refund where a product is faulty; or not fit for intended purpose.

This warranty will not cover modified product; misuse or abuse of the product contrary to user instructions or packaging label; change of mind and normal wear and tear.

Our goods come with guarantees that cannot be excluded under the Australian Consumer Law. You are entitled to a replacement or refund for a major failure and for compensation for any other reasonably foreseeable loss or damage. You are also entitled to have the goods repaired or replaced if the goods fail to be of acceptable quality and failure does not amount to a major failure.

To claim warranty, please contact the place of purchase. You will need to show receipt or other proof of purchase. Additional information may be required to process your claim.

Any expenses relating to the return of your product to the store will normally have to be paid by you.

The benefits to the customer given by this warranty are in addition to other rights and remedies of the Australian Consumer Law in relation to the goods or services to which this warranty relates.

This warranty is provided by:

Electus Distribution

Address 46 Eastern Creek Drive, Eastern Creek NSW 2766

Ph. 1300 738 555