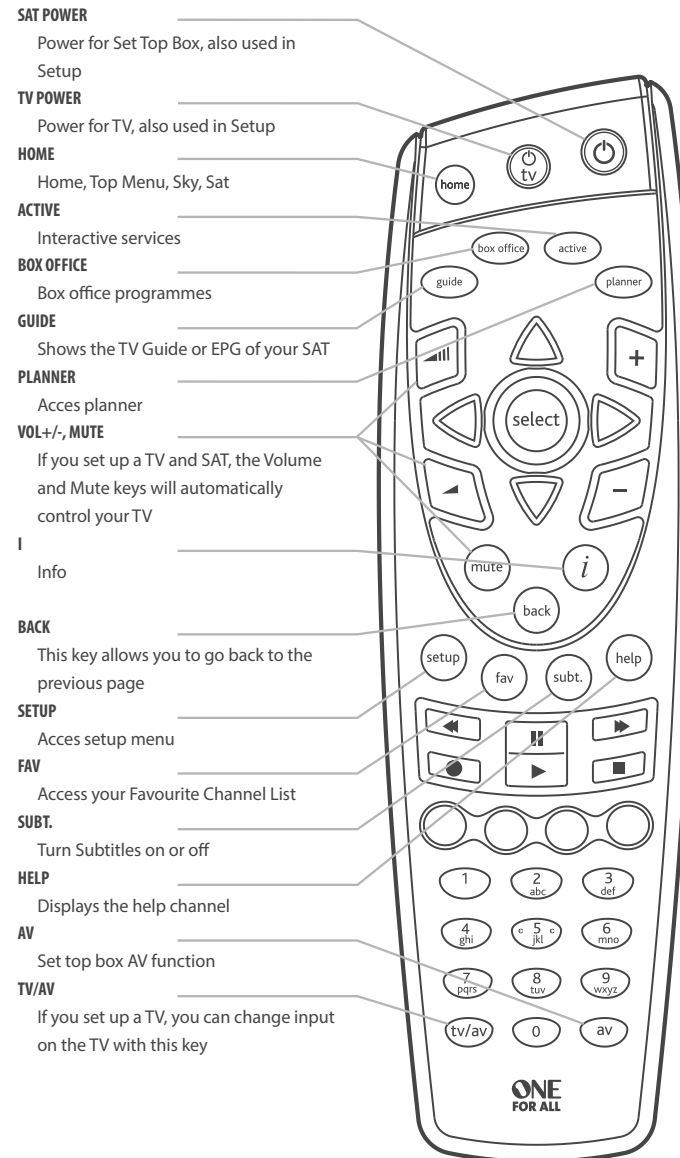
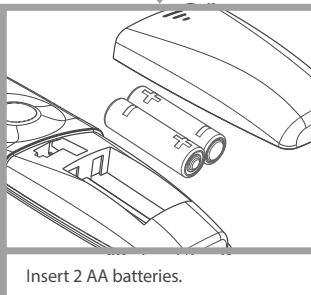
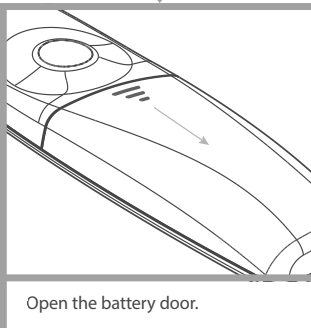


URC 1669

SIMPLE SET UP GUIDE



WELCOME, PREPARE YOUR REMOTE FOR INSTALLATION



FINISH

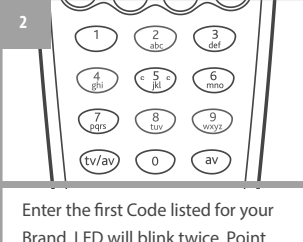
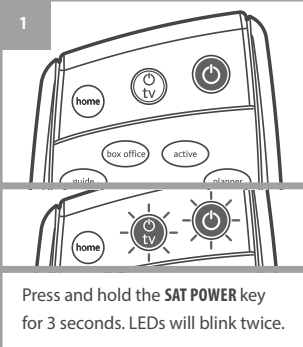
SET TOP BOX

SET UP YOUR SAT

IF YOU HAVE A FOXTEL BOX
YOUR REMOTE IS READY TO USE

IF NOT: DIRECT SET

Locate the brand of your Set Top Box in the codebook

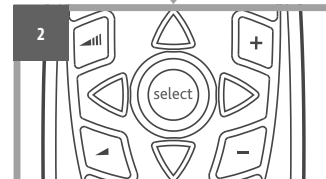
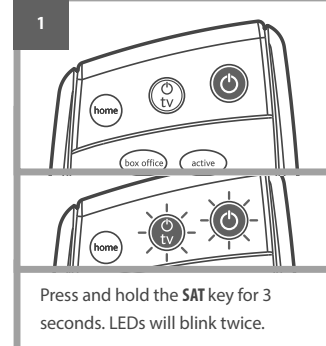


FINISH

AUTO SEARCH

(IF DIRECT SET DOES NOT WORK)

SAT

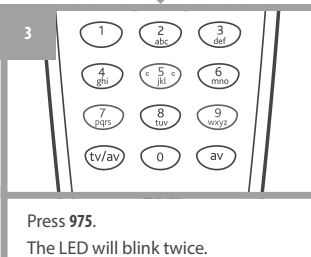
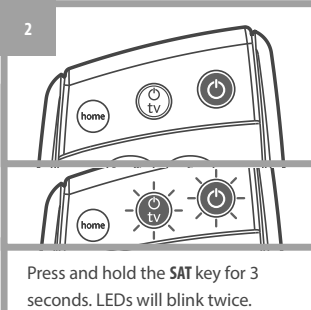
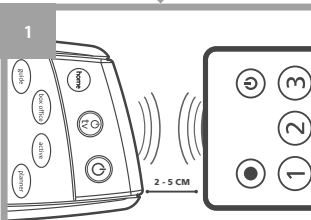


FINISH

COPY LEARN FUNCTION

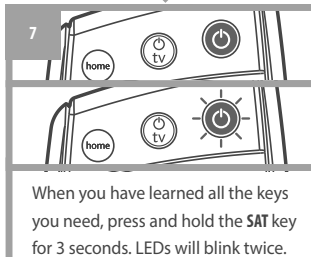
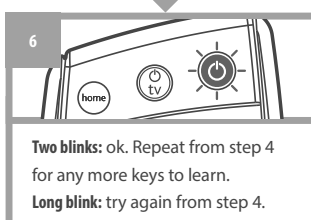
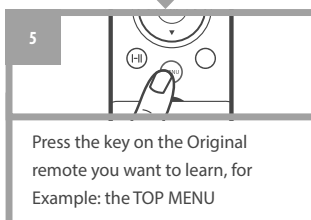
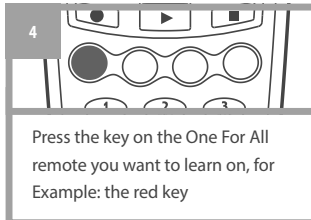
START: LEARN A NEW FUNCTION TO YOUR REMOTE

Your One For All remote can learn any function from your original (working) remote.



HOW TO DELETE A LEARNED FUNCTION

1. Press and hold **SAT** for 3 seconds. Both LED's will blink twice.
2. Press 976.
3. Hold the **CORRESPONDING** key you wish to delete for 3 seconds until the SAT LED blinks twice.
4. Press and hold **SAT** for 3 seconds to end the delete feature. The SAT LED will blink twice.



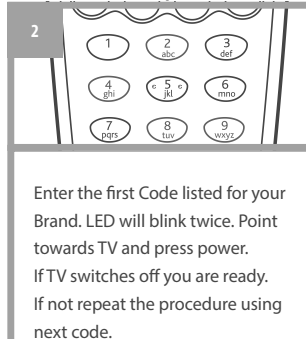
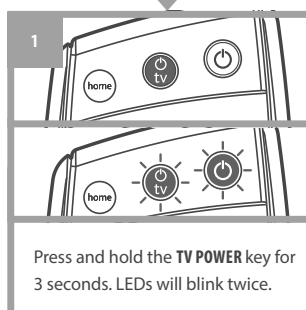
SET UP YOUR TV

OPTIONAL

This option allows for certain TV functions to be used while remaining in SAT mode: Volume, AV and mute. The TV button will also allow the TV to be turned on and off

DIRECT SET

Locate the brand of your TV in the codebook.



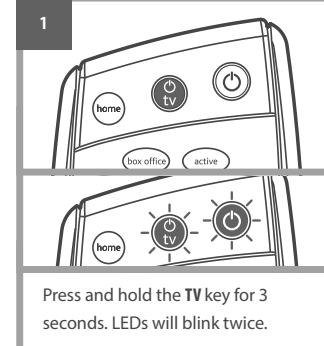
FINISH

TV

AUTO SEARCH

(IF DIRECT SET DOES NOT WORK)

TV - IF REQUIRED



FINISH

HOW TO RESTORE SAT VOLUME

If you have programmed the remote for your TV, but would prefer to control the volume of the Set Top Box, please perform the following:

1. Press and hold **SAT** for 3 seconds. Both LED's will blink twice.
2. Press 993.
3. Press **SAT**. The SAT LED will blink twice.

PRODUCT DISPOSAL

(EUROPEAN DIRECTIVE 2002/96/EC)
The crossed out wheeled bin symbol on this product ensures that this product is manufactured using high quality components that can be recycled and reused according European Directive 2002/96/EC. Please do not dispose this product with your normal household waste but inform yourself about the local separate collection for electrical and electronic products to dispose this product correctly. This will help preventing potential negative effects on the environment and/or human health.

BATTERY DISPOSAL

(EUROPEAN DIRECTIVE 2006/66/EC)
Please do not dispose your batteries with your normal household waste but inform yourself about the local separate collection for empty batteries to dispose them correctly. This will help preventing potential negative effects on the environment and/or human health.

UNIVERSAL ELECTRONICS INC/ONE FOR ALL warrants to the original purchaser that this product will be free from defects in materials and workmanship under normal and correct use for a period of one (1) year from the date of original purchase. This product will be replaced free of charge if it has been proven to be defective within the one (1) year warranty period. This warranty does not cover cartons, carrying cases, batteries, broken or marred cabinets or any other item used in connection with the product. Any further obligation than listed above is excluded. To obtain warranty service during the warranty period, please call us at the number mentioned on the Customer Service page. Please notice that we need your purchase receipt so that we may establish your eligibility for service. If you have bought this product for purposes which are not related to your trade, business of profession, please remind that you may have legal rights under your national legislation governing the sale of consumer goods. This guarantee does not affect those rights.