

digitech

Wi-Fi HDMI Miracast Dongle



Model:
AR1922

Instruction Manual

BOX CONTENTS:

1 x Anycast HDMI Dongle

1 x Male USB Micro B Lead to USB A and WiFi Dongle

1 x User Manual

PRODUCT DIAGRAM:



1 Micro B Socket

2 LED

3 HDMI Plug

4 Reset Button

5 Wi-Fi Dongle

6 USB-A Plug

7 Micro B Plug

PRODUCT FUNCTIONS:

This Anycast dongle allows you to stream content from your smartphone, tablet or PC to your TV. It features a screen mirroring function as well as DLNA and Airplay® for an almost universal ability to stream media from a compatible device. Through the casting functionality, play YouTube, videos, pictures and other streaming services straight onto your TV.

MIRACAST:

Mirrors the display of your device on anything with HDMI Input.

DLNA:

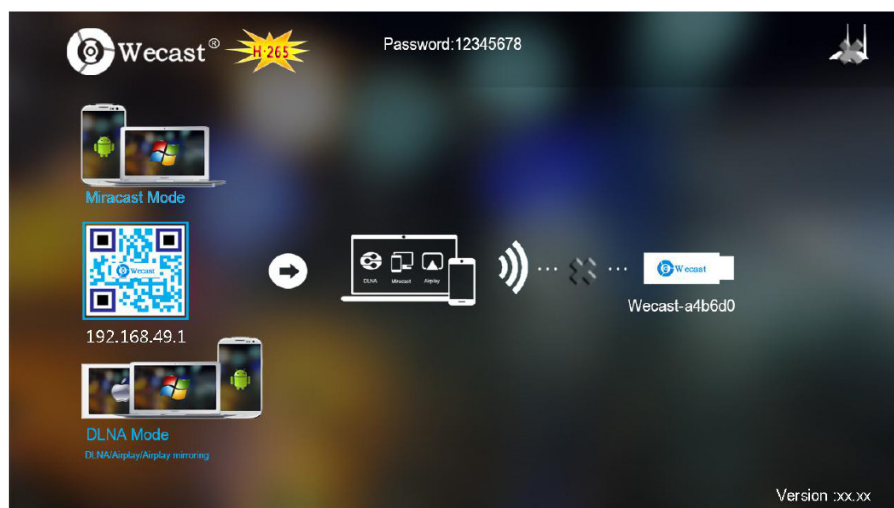
Streams pictures, videos and music from your device on anything with HDMI Input.

SYSTEM REQUIREMENTS:

iOS	iOS 7 and above, iPhone 4+, iPad2, iPod 4+
Android	Android 4.2 model with 1GB RAM
Windows	Windows 8.1+
MAC	MAC10.8

DONGLE INSTALLTION:

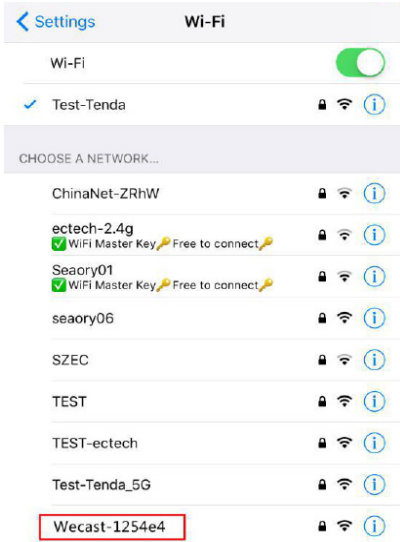
1. Connect the Wi-Fi dongle lead with Micro B to Anycast dongle.
2. Then connect the USB A lead to a USB port to provide power to both dongles
3. Press the reset button for 3 to 5 seconds to unpair any device linked to Anycast
4. Plug the dongle into the HDMI port of your TV or projector.
5. Switch your TV or projector's input source to HDMI. The dongle's main menu should appear on the screen.



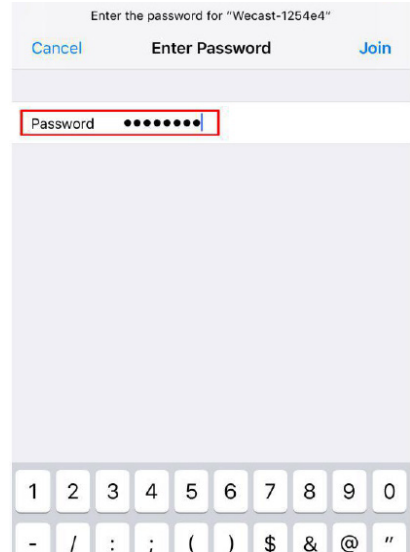
DONGLE INSTALLTION:

Pairing to iOS Device:

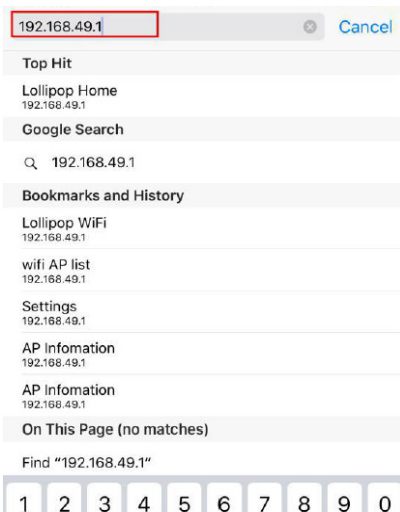
1. Go to Wi-Fi & find “Wecast-xxxxxx”



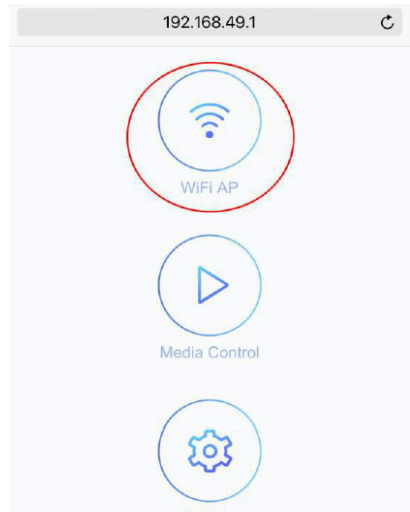
2. Input password: 12345678



3. Open browser & input “192.168.49.1”



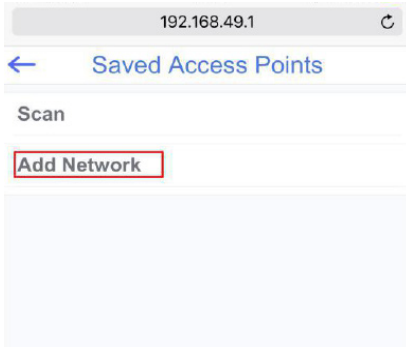
4. Click on WiFi AP



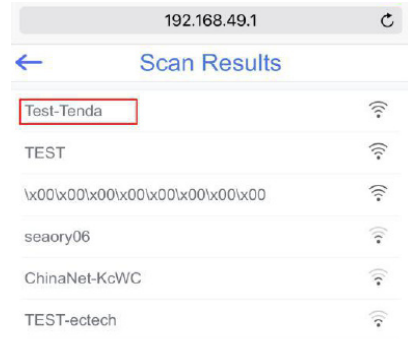
DONGLE INSTALLTION:

Pairing to iOS Device:

5. Select "Scan"



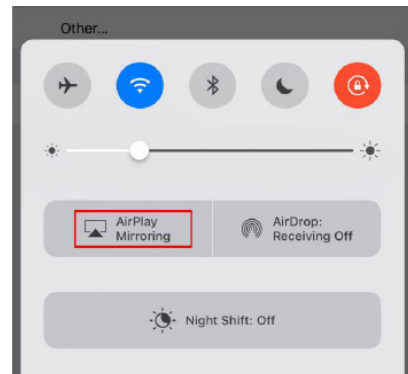
6. Choose your Wi-Fi



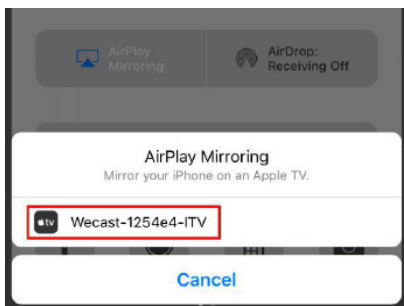
7. Input your WiFi password



8. Select Airplay Mirroring



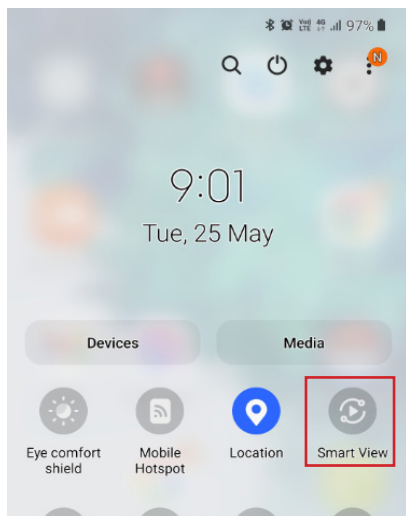
9. Select "Wecast-xxxxxx"



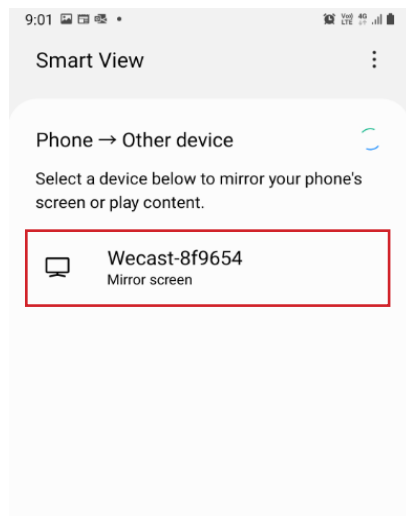
DONGLE INSTALLTION:

Pairing to Android Device:

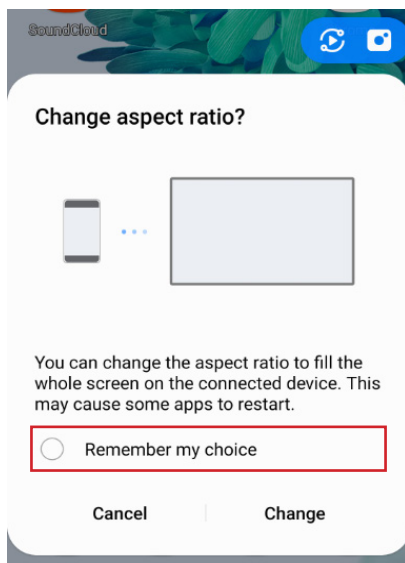
1. Find Smart View/Allshare.



2. Choose "Wecast-xxxxxx"



3. Select "remember my choice" to obtain the best aspect ratio on your TV

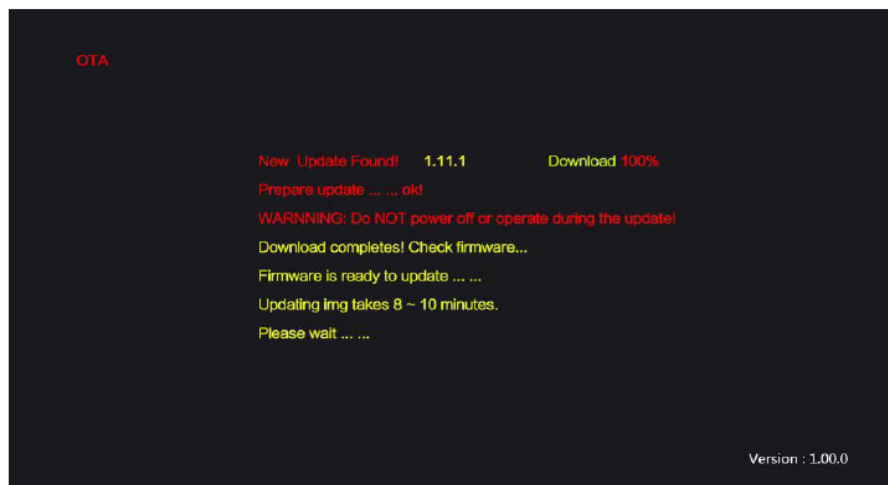


ONLINE UPGRADE:

The Anycast dongle will detect if there is a new firmware and it will automatically upgrade when connected to the Wi-Fi. Please do not operate while the device is updating the firmware.

1. Connect the external Wi-Fi Router.
2. Dongle will detect the new firmware automatically then proceed to download and install the new firmware.
3. Once the installation of the new firmware is complete, the unit will restart itself.

(Do not turn off power during the Firmware Upgrade and make sure Wi-Fi connection is stable.)



NOTES:

NOTES:

NOTES:

Distributed by:
Electus Distribution Pty. Ltd.
320 Victoria Rd, Rydalmere
NSW 2116 Australia

www.electusdistribution.com.au

Made in China