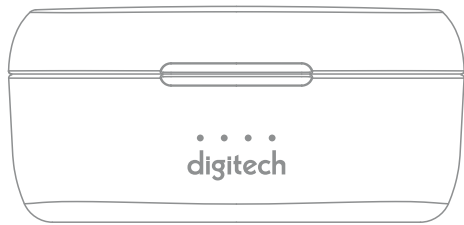


料号:
 名称: 说明书
 材质: 128g铜板纸+风琴折
 颜色: 双面4C印刷
 尺寸: 80×160mm
 比例: 1:1

True Wireless Stereo Earbuds AA2147



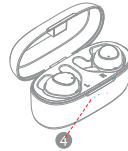
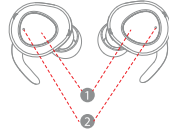
HIGH FIDELITY SOUND
 Combining dynamic speakers for wireless music enjoyment

In the box

- ① AA2147 Wireless Earbuds
- ② On-the-go Charging Case
- ③ 3 Pairs of Silicone Eartips(Size S/M/L),
- ④ 3 Pairs of Earwings(Size S/M/L),/1 Pair of Earloop
- ⑤ USB-C Cable
- ⑥ User Manual

Functions

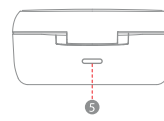
- ① MFB (multifunction button)
- ② Indicator light
- ④ Charging Case indicator



- ③ Charging contact point



- ⑤ USB-C charging port



How to wear your TWS earbuds

① Step 1

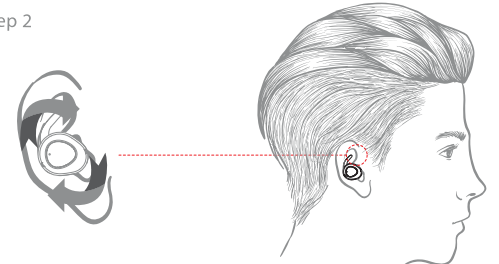


Place the headset into the ear canal



②

② Step 2



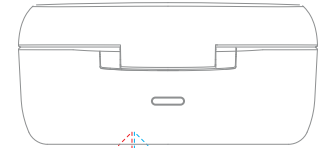
Adjust the earbuds by rotating it back and forth to feel more stable and comfortable.

Charging (case)

To Power up the charging case, simply connect it to a USB power supply via the USB-C Cable. The LEDs on the front of the charging case will flash when charging and all the 4 LEDs will remain on for one minute when fully charged and then all shut off. The fully charged charging case may support 4-5 recharges for both Earbuds.

Electric indicator lamp

25% of Battery capacity or less - 1/4 LEDs
 50% of Battery capacity or less - 2/4 LEDs
 75% of Battery capacity or less - 3/4 LEDs
 100% of Battery capacity or less - 4/4 LEDs

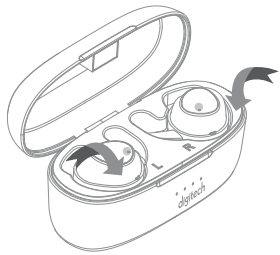


③

Charging (earbuds)

To charge the earbuds, simply place them into the charging case. (Ensure two earbuds are placed in corresponding slot). The LEDs on both earbuds turning red indicate earbuds are under charging status and then shut off when fully charged.

Note: Please charge the earbuds and the charging case once at least every 3 months if you do not use the earbuds for a long time. Please disconnect the charger in time when the charging case is fully charged.



How to Turn On/Off

Turn on:

Method 1: Take both earbuds out from the charging case, they will turn on and connect with each other automatically.

Method 2: When the earbuds is power off, press and hold the multi-function button on either earbud for 5 seconds. (LEDs on both earbuds will keep blue for 1 second)

Turn off:

Method 1: Put the earbuds back into the charging case, they will turn off automatically.

Method 2: When the earbuds is power on, press and hold the multi-function button on either earbud for 5 seconds. (LEDs on both earbuds will keep red for 1 second)

Note: If you turn one of the earbud off while both earbuds are paired with your Bluetooth enabled device, the other one will turn off at the same time.

How to Pair Twins Earbuds Mode

1. Take both earbuds out from the charging case, they will power on and connect with each other automatically. (The LEDs on earbuds flash blue and voice prompt says "left channel" & "right channel")
2. Enable Bluetooth on your device and select "AA-2147" from list to connect. You will hear voice prompt "pairing successfully" once connected.

④

3. Once the earbuds paired with your device manually for the first time as described above, they could pair with this device automatically each time in the future as soon as you take them out from charging case. **Note:** If you hear voice prompt "Low battery" from one of the earbud, the other one may have some battery in fact. You may put the low battery one back to charging case for charging and use the other one as Mono Earbud Mode.

Mono Earbud Mode

Mono mode for Right earbud:

Take the right earbud out of the charging case, it will power on and enter pairing mode automatically. Enable Bluetooth on your device and tap "AA-2147" on the list to connect. If the right earbud has been used as Mono mode last time, it will connect with your last connected device automatically once it was pick up from charging case.

Mono mode for left earbud:

Take the left earbud out of the charging case, it will power on automatically. Quick Double press the multifunction button on earbud to enter pairing mode. Enable Bluetooth on your device and search for "AA-2147 L", tap to connect. If the left earbud has been used as Mono mode last time, it will connect with your last connected device automatically once it enter pairing mode.

Mono mode for both earbuds at the same time:

Take both earbuds out of the charging case, quick triplepress the multi-function button on the right earbud. Both earbuds will lose the connection with each other and enter Mono pairing mode. Then search for "AA-2147" from bluetooth menu on A device and tap to pair, and search for "AA-2147 L" from bluetooth menu on B device to pair.

Remark: How to Reset Mode

If the L sides can't connect with R sides or only have one sides have sound, firstly take both sides put into charge case, then take out to see if works well. If not pls handle below operation way.

1. Turn off R and L both sides separately by handle.
2. Then long press R and L both sides around 8-10s until showing purple Led in R or L sides, then release your handle accordingly, R and L sides will repair each other, after around 4s will see R flash blue and red Led, L flash blue led means both sides repaired successfully.

Controls

Play/Pause music	Press either earbud button for once
Volume up	Quick Double-press the button on left earbud
Volume Down	Quick Triple-press the button on left earbud
Next Track	Quick Double-press right earbud button
Previous Track	Quick Triple-press right earbud button
Answer/End a Call	Press either earbud button for once
Reject an incoming call	Press and hold either earbud button for 2 secs when there is a incoming call
Activate Siri	Press and hold either earbud button for 2 secs until hear voice prompt "Toot"

⑤

Specification

Bluetooth version	V5.0
Music play time	6 hours
Talk time	5 hours
Standby time	100 hours
Effective distance	Up to 10m
Bluetooth profiles	HFP/ A2DP/AVRCP/HFP
Driver	6mm
Sound pressure level	96±3dB
Frequency response	20Hz---20 KHz
Battery of headset	50mAH Li-polymer Battery
Charging voltage of headset	5V
Charging time of headset	1.5hours
Battery of box	500 mAH Li-polymer Battery
Charging voltage of box	5V
Charging time of box	2hours
Earphone weight	5g x 2pcs
Charging box weight	37g
Box size	95x39x170mm

NOTE: This equipment has been tested and found to comply with the limits for a Class B digital device, pursuant to part 15 of the FCC Rules. These limits are designed to provide reasonable protection against harmful interference in a residential installation. This equipment generates uses and can radiate radio frequency energy and, if not installed and used in accordance with the instructions, may cause harmful interference to radio communications. However, there is no guarantee that interference will not occur in a particular installation. If this equipment does cause harmful interference to radio or television reception, which can be determined by turning the equipment off and on, the user is encouraged to try to correct the interference by one or more of the following measures:

- Reorient or relocate the receiving antenna.
 - Increase the separation between the equipment and receiver.
 - Connect the equipment into an outlet on a circuit different from that to which the receiver is connected.
 - Consult the dealer or an experienced radio/TV technician for help
- Changes or modifications not expressly approved by the party responsible for compliance could void the user's authority to operate the equipment. This device complies with Part 15 of the FCC Rules. Operation is subject to the following two conditions:
 (1) this device may not cause harmful interference, and
 (2) this device must accept any interference received, including interference that may cause undesired operation.

⑥