

2.4GHz
**Wireless Stereo
Headphones**
with Cradle

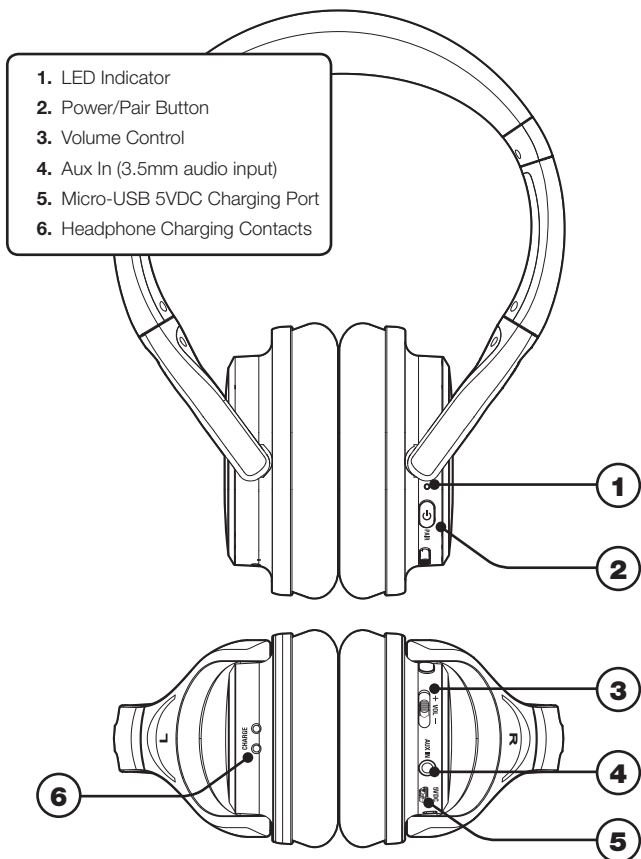


SAFETY WARNINGS

- **WARNING:** Where the mains plug or appliance coupler is used as the disconnect device, such disconnect device shall remain readily operable.
- Risk of electric shock. Grounding continuity must be maintained.
- Lithium batteries, like all rechargeable batteries, are recyclable and should be recycled or disposed of according to state and local guidelines. They should never be disposed of in normal household waste, and they should never be incinerated, as they might explode. Contact your local government for disposal or recycling practices in your area.
- Only use the included power supply or a RCM/MEPS certified power supply of the same power output specifications.
- To avoid hearing damage, make sure that the volume on your music player is turned down before connecting your headphones. After placing headphones in/on your ears, gradually turn up the volume until you reach a comfortable listening level.

OVERVIEW

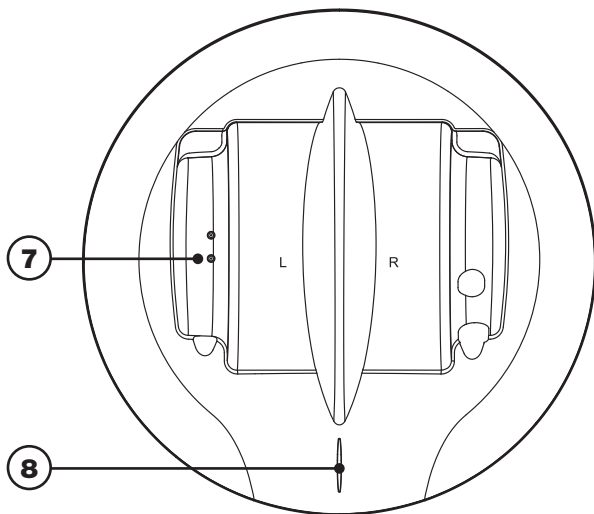
Headphones



OVERVIEW

Base

- 7. Charging Contacts
- 8. LED Indicator



Control Functions



» Power

Press and hold to power ON and OFF.

» Pair

Press to pair to the headset base (see pg. 12 for pairing procedure).



» Volume

Press up or down to adjust volume level.

LED Indicator Lights

» Headphone Functions

Flashing Blue - Wi-Fi connecting
Solid Red - Battery charging

» Base Functions

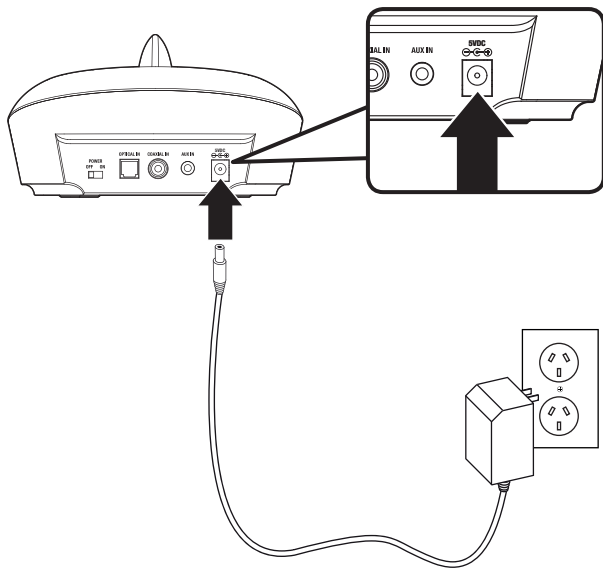
Solid Red - Charging headphones
Solid Blue - Media source connected
Flashing Blue - Media source not connected

SETUP

Base Power

Connect the DC Power Input on the base to a standard power outlet using a DC Power Adapter (included).

The base must be connected to a power source and powered ON to transmit audio to the headphones.



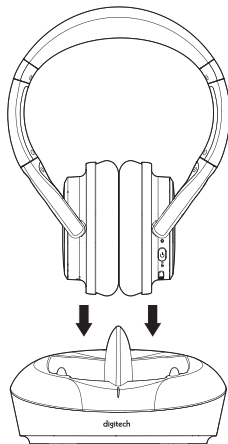
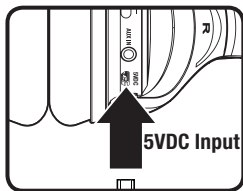
Headphone Charging

There are two ways to charge the headphones.

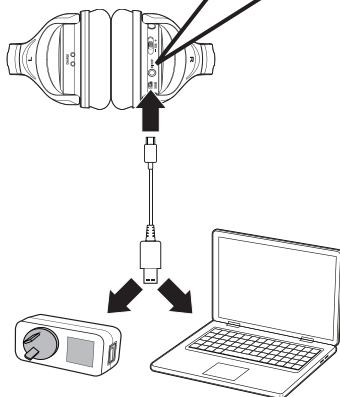
- » Place the headphone on the base so that the charging contacts are aligned.
- » Use a Micro-USB to USB cable (included) to connect the 5VDC Input (Micro-USB) on the headphones to the USB port on a powered on computer or USB power adapter (not included).

A fully charged battery will provide up to 10 hours of playtime. Battery life will improve at lower volume levels and decrease at higher volume levels.

Headphone & Base Indicator Light	Battery Status
Red light ON	Charging battery
Light OFF	Charging complete



Transmitter Base



**USB Power Adapter
(not included) or
powered ON computer
(not included).**

CONNECTING AUDIO

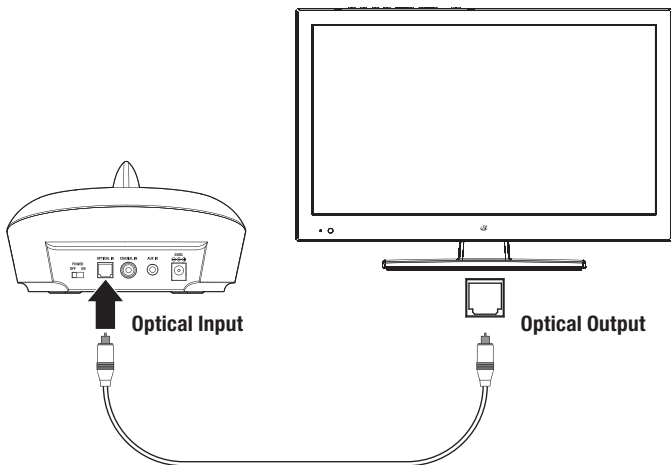
Digital Optical Audio

Requires a media source with an Optical Audio Output and a Digital Optical Audio Cable (included).

1. Using a Digital Optical Audio Cable, connect the **Optical Output on your media source** (TV, amplifier, etc.) to the **Optical Input on the base**.
2. On the connected media source (TV, amplifier, etc.), make sure the audio settings are set to **PCM or Optical Audio**.
3. Audio played through the connected media source (TV, amplifier, etc.) will now be sent through the base.

Important tips for optical audio:

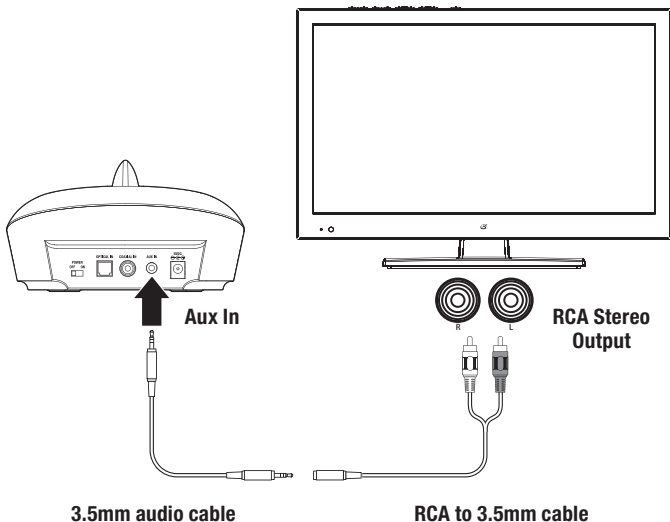
- » Use the correct Optical cable and make sure that it is firmly seated in the Optical Input/Output sockets on the base and the media source.
- » Optical audio output is activated from the media source (a red light should be visible from the Optical socket). It may be labeled SPDIF in the setting menu of the source.
- » The optical output source should be set to output PCM and not Dolby Digital.



RCA Stereo Audio

Requires a 3.5mm to RCA stereo audio cable adapter and a 3.5mm audio cable (included). When connecting an RCA stereo audio cable (Red/White), match the colored plugs to their corresponding ports.

1. Using a 3.5mm to RCA Stereo Audio Cable (included), connect the **RCA Stereo Output** on your media source (TV, amplifier, etc.) to the **Aux In** (3.5mm audio input) on the base.
2. Audio played through the connected media source (TV, amplifier, etc.) will now be sent through the base.

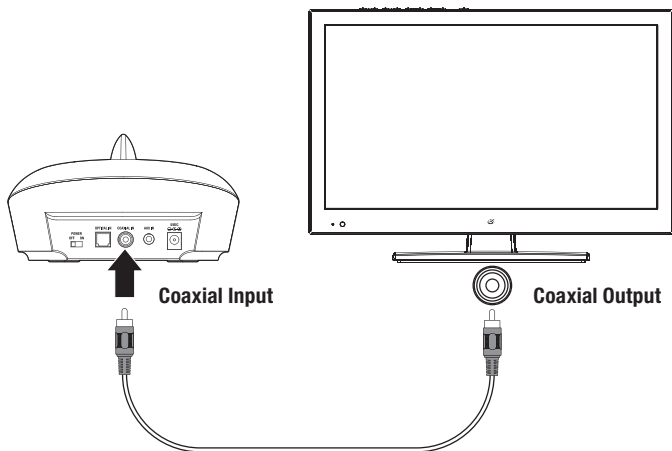


CONNECTING AUDIO

Coaxial Audio

Requires a media source with a Coaxial Audio Output and a Coaxial Audio Cable (not included).

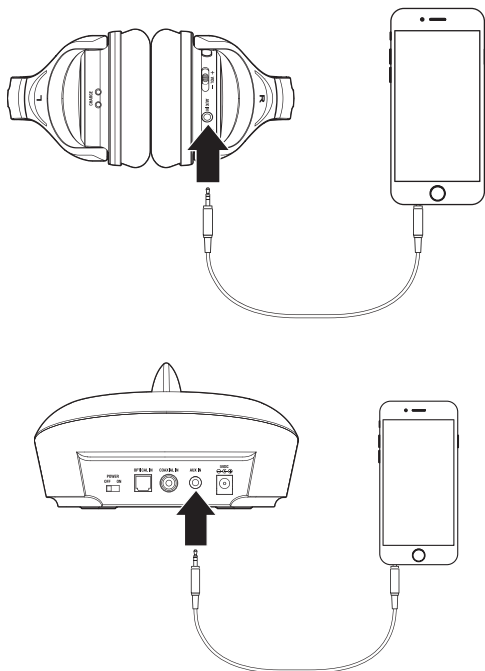
1. Using a Coaxial Audio Cable, connect the **Coaxial Output** on your media source (TV, amplifier, etc.) to the **Coaxial Input** on the base.
2. On the connected media source (TV, amplifier, etc.), make sure the audio settings are set to **Coaxial Output**.
3. Audio played through the connected media source (TV, amplifier, etc.) will now be sent through the base.



Line In

Requires a 3.5mm audio cable (included).

1. Connect a 3.5mm audio cable to the **Line In** on the base or the headphones and the **audio output/headphone jack** on an audio device.



LISTENING

Pairing the Headphones to the Base

Note: After the initial pairing, the headphones will stay paired to the transmitter base. It will not be necessary to reconnect each time you use the headphones.

1. Press and hold the **Power/Pair button** to power on the headphones.
2. Press the **Power/Pair button** again to begin pairing. The headphones will automatically detect the base and connect to it.
3. After a successful connection, the LED on the headphones will slowly blink blue. The LED on the base will turn solid blue.
4. When you are finished using the headphones, press and hold the **Power/Pair button** to power them off, then place them on the base to charge the batteries while not in use.

TROUBLESHOOTING

PROBLEM	POSSIBLE SOLUTION
Unit will not power on	» Make sure the headphones' battery is charged. Recharge if needed.
Audio distortion	» Volume on the headphones or the connected device may be too high. Reduce the volume of one or both of the devices.
Headphones won't play or fails to connect	» Make sure the volume on the headphones is turned up to an audible level. » Make sure the headphones' battery is charged and they are powered on. » Stay within 3 ft. of the headphones when pairing to the transmitter base. » Stay within 50 ft. of the transmitter base.
White noise/ Headphones will not function properly	» Power the headphones OFF, then ON again.