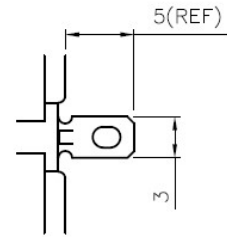
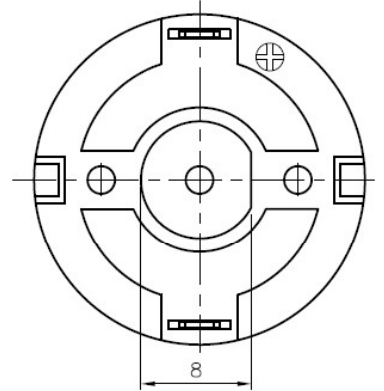
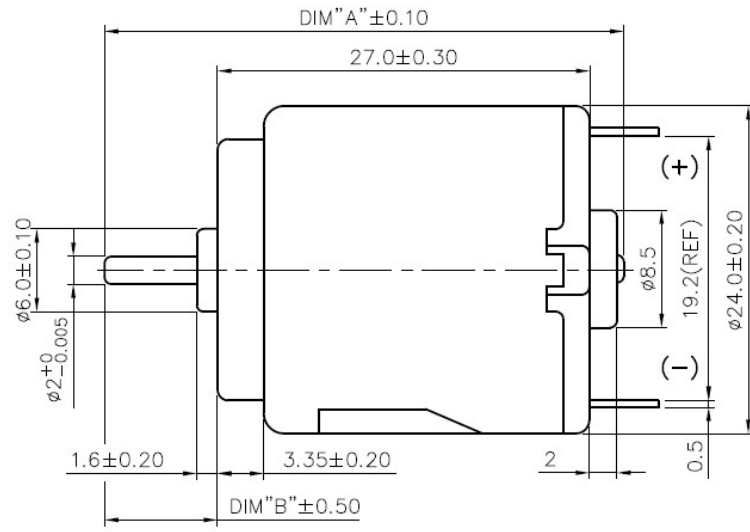
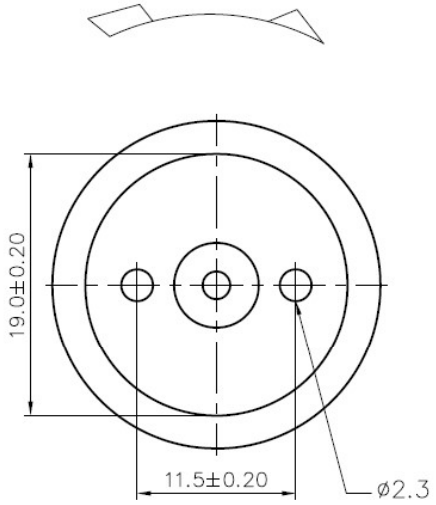


DIRECTION OF ROTATION



額定電壓 (Voltage) : 4.5 V
 額定輸出 (Pout Rated) : 2.10 W

實驗室溫度 (Ambient Temperature) : 25
 無載轉速 (No-Load R.P.M) : 12000
 無載電流 (No-Load Current) : 0.22A
 啓動轉矩 (Started Torque) : 99.90 g-cm
 測試日期 (Test Date) : 2016.03.23

	轉速 R.P.M.	電流 Amps	轉矩 Grcm	效率 Eff(%)	輸出功率 W(out)	輸入功率 W(in)
堵住狀態 (Locked Rotor)	0	3.337	99.906	0.00	0.0000	14.913
最大扭力 (Max-Torque)	0	3.337	99.906	0.00	0.0000	14.913
最大效率 (Max-Efficiency)	9200	0.912	22.300	52.58	2.1069	4.007
最大輸出功率(Max-W(out))	5600	1.852	52.281	36.32	3.0067	8.278

