

protech

80W Soldering Iron

HOBBYIST



User Manual

TS1485

CONTENTS

General Information & Safety Instructions	3
Box Contents.....	3
Product Diagram	4
Operating Instructions	4
Cleaning, Care, Storage & Maintenance	6
Working Temperature	7
Warranty Information	8

GENERAL INFORMATION & SAFETY INSTRUCTIONS

Product introductions, safety warnings, & any other relevant information that doesn't fit anywhere else in the manual.

Any disposal or recycling instructions should be included here.

Any major warnings or notes should be clearly addressed at the end of this section in the below method;

For safety warnings, age restrictions & recommendations;

WARNING: The manufacturer is not responsible for any potential injury from misuse

Throughout the manual any important notes should be clearly identified using addressed as per below;

NOTE: The product should be placed in a secure location before turning on

BOX CONTENTS



1x Soldering Iron

PRODUCT DIAGRAM

Soldering Tip



OPERATING INSTRUCTIONS



1. Remove any dirt, rust, or paint from the part you intend to solder. Then, heat the part using the soldering iron.

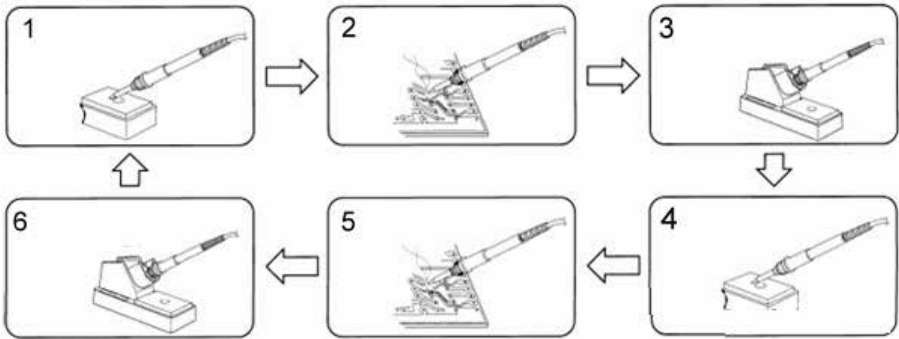


2. Apply rosin-based solder to the part and melt it with the soldering iron. Note: If you're using non-rosin-based solder, make sure to apply soldering paste to the part before applying the solder.



3. Allow the solder to cool and harden before handling the soldered part.

Soldering steps to protect the tip from oxidation.



1. Before soldering, clean the tip using a sponge, and then apply solder to the tip.
2. Begin your soldering work.
3. When not in use, please place the soldering iron on the holder.
4. Clean the tip and apply solder to it.
5. Proceed with the soldering.
6. Repeat steps 1 to 5 as needed.
7. When the soldering job is complete clean the tip and apply solder for protection. Remember to turn off power to the soldering iron and allow to cool before storing.

CLEANING, CARE, STORAGE & MAINTENANCE

Soldering Tip Care Guidelines

- Always ensure that the tips are coated with solder to prolong their service life.
- Avoid leaving the iron at high temperatures for an extended duration.
- Never clean the tip with abrasive materials.
- Do not quench the tip in water.
- It is advisable to remove and clean the tip every twenty hours of use, or at least once a week, and clear any loose residue from the barrel.
- Refrain from using fluxes that contain chloride or acid; opt for rosin or activated resin fluxes only.
- Avoid using any compounds or anti-seize materials.
- Handle the heated soldering iron with extreme caution, as its high temperature can lead to fires or severe burns.
- Ensure the soldering tip is correctly fitted and the locking screw is tightened securely.

Soldering Iron Maintenance

This tool should be placed on its stand when not in use. If the supply cord is damaged, it should be replaced by an authorised service person to avoid any hazards.

Do not attempt to file the specially-plated tip.

Tip Replacement

Tip replacement or cleaning should be performed only when the iron is at room temperature or below. To change or replace the tip, unscrew the knurled nut barrel assembly. Ensure that the station is switched off and allowed to cool both before and during this operation, as leaving the system on without the tip inserted could lead to damage.

After removing the tip, clean any oxide dust that may have formed in the tip-retaining area of the barrel. Be cautious to prevent dust from getting into your eyes. To replace the tip, screw the retaining knurled nut barrel assembly using only hand pressure to tighten. Pliers should be used only if the nut needs tightening when the iron is hot, to avoid burns on your fingers. Be careful not to overtighten, as this could damage the heating element.

General Cleaning

You can clean the outer case of the iron or station with a damp cloth and a small amount of liquid detergent. Do not submerge the unit in liquid or allow any liquid to enter the case of the station. Never use solvent to clean the case.

WORKING TEMPERATURE

Soldering at the correct temperature is very important to ensure perfect solder connection. If the temperature is too low the solder will not flow correctly and will cause cold solder joints. If the temperature is too high the flux will be burned and not allow the solder to flow. High temperature can also cause damage to the PC Board and other sensitive components. The most common solder wire is 60% tin, 40% lead (60/40). A common tip working temperature of 60/40 solder is as below

- Melting point..... 419°F (215°C)
- Normal operation.....419°F-572°F (215°C - 300°C)
- Production line operation608°F-716°F (320°C - 380°C)
- Desoldering operation for small joint..... 599°F (315°C)
- Desoldering operation for larger joint 752°F (400°C)

WARRANTY INFORMATION

Our product is guaranteed to be free from manufacturing defects for a period of 12 Months.

If your product becomes defective during this period, Electus Distribution will repair, replace, or refund where a product is faulty; or not fit for intended purpose.

This warranty will not cover modified product; misuse or abuse of the product contrary to user instructions or packaging label; change of mind and normal wear and tear.

Our goods come with guarantees that cannot be excluded under the Australian Consumer Law. You are entitled to a replacement or refund for a major failure and for compensation for any other reasonably foreseeable loss or damage. You are also entitled to have the goods repaired or replaced if the goods fail to be of acceptable quality and failure does not amount to a major failure.

To claim warranty, please contact the place of purchase. You will need to show receipt or other proof of purchase. Additional information may be required to process your claim.

Any expenses relating to the return of your product to the store will normally have to be paid by you.

The benefits to the customer given by this warranty are in addition to other rights and remedies of the Australian Consumer Law in relation to the goods or services to which this warranty relates.

This warranty is provided by:
Electus Distribution
Address 46 Eastern Creek Drive,
Eastern Creek NSW 2766
Ph. 1300 738 555