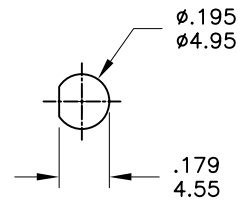
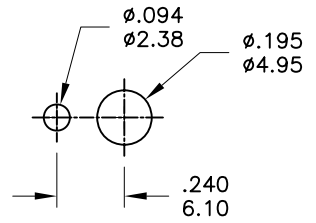


	POS.1	POS.2	POS.3
	ON	NONE	ON
Term. Comm.	2-3	N/A	2-1
SCHEMATIC			

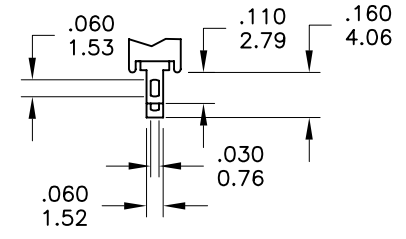
SWITCH FUNCTION



Without locking ring.



With standard locking ring.



SOLDER LUG

PANEL MOUNTING

**SPECIFICATIONS**

- MECHANICAL LIFE:** 30,000 make-and-break cycles.
- CONTACT RESISTANCE:** 20m $\Omega$  max. initial @ 2-4VDC  
100mA for both silver and gold plated contacts.
- INSULATION RESISTANCE:** 1,000M $\Omega$  min.
- DIELECTRIC STRENGTH:** 1,000 V RMS@sea level.
- OPERATING TEMPERATURE:** -30° C to 85° C.

**MATERIALS**

- CASE -** Diallyl phthalate(DAP)( UL94V-0 )
- ACTUATOR -** Brass,chrome plated
- BUSHING -** Brass,nickel plated
- HOUSING -** Stainless Steel
- SWITCH SUPPORT -** Brass,tin plated.
- TERMINALS/CONTACT -** Brass, with Silver plated.

**RATING :**

- 1Amp @250VAC
- 3Amps @120 VAC or 28 VDC

<b>SCALE (比例) : 3 : 2</b>	TITLE 圖名	Sub - Miniature Toggle Switches	SIZE 圖紙	A4
TOLERANCE (公差) : 0.00 mm $\pm$ 0.25mm 0.0 mm $\pm$ 0.40mm ANGULAR : $\pm$ 5°	DWG NO. 圖號	ST0300	UNIT 單位	inch mm