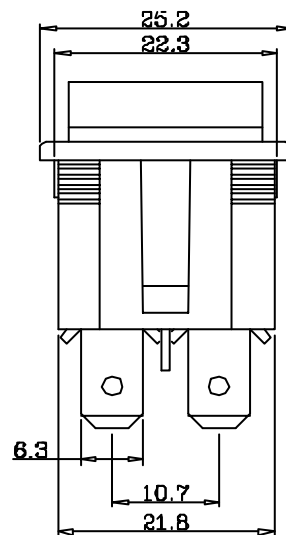
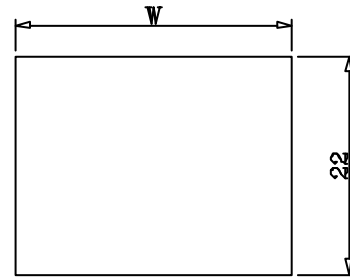
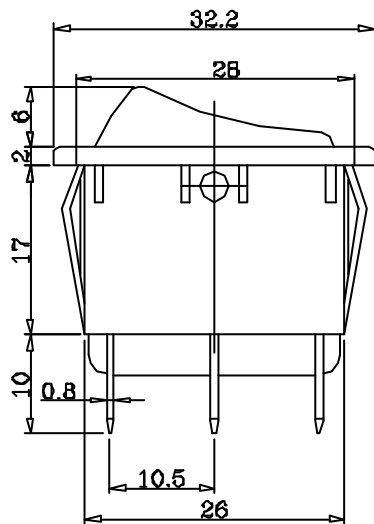
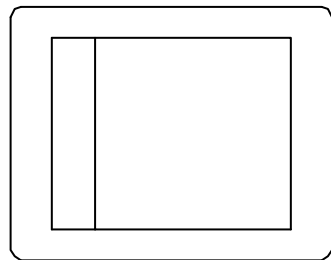
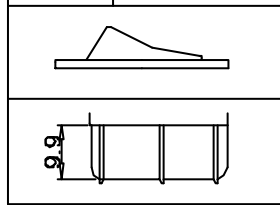


W	PANEL THICK
28.0	0.75-1.25
28.2	1.25-2.0
28.5	2.0-3.0



規格 SPECIFICATIONS:

- 迴路
CIRCUIT ON-ON
- 定格
RATING 10A 125VAC/250VAC
16A 250VAC
- 接觸電阻
CONTACT RESISTANCE 30mΩ Max .
- 絕緣電阻
INSULATION RESISTANCE DC 500V 100MΩ Min .
- 耐電壓
WITHSTAND VOLTAGE AC 2000V 1 Minute .
- 作動力
OPERATION FORCE 800±300 g .
- 電氣壽命
ELECTRICAL LIFE 10,000 Cycles At Full Load .
- 使用溫度範圍
OPERATING TEMPERATURE RANGE -25°C~+85°C .
- 焊接
SOLDERING 280°C FOR 3 Sec .

	品名	ROCKER SWITCH	無註記公差	第三	
	品號	SK0981	長度 ±0.2 角度	角法	
			比例	單位	mm