

PC Programmable remote control

User Manual (USB mode)

*For more information and support, please see Remote Control Database Center
www.clurc.net.*

Quick Guide

First Step

- Prepare PC programmable remote control and install 3pcs AAA battery.(When connecting to PC, please take out of battery.)
- Prepare USB cable and connect USB remote control to the USB port of PC.
- Downloading and installing software in your PC(windows OS).

Second Step

- Identify (Read) or select USB remote control model manually
- Code Select from database
- Program (Write)

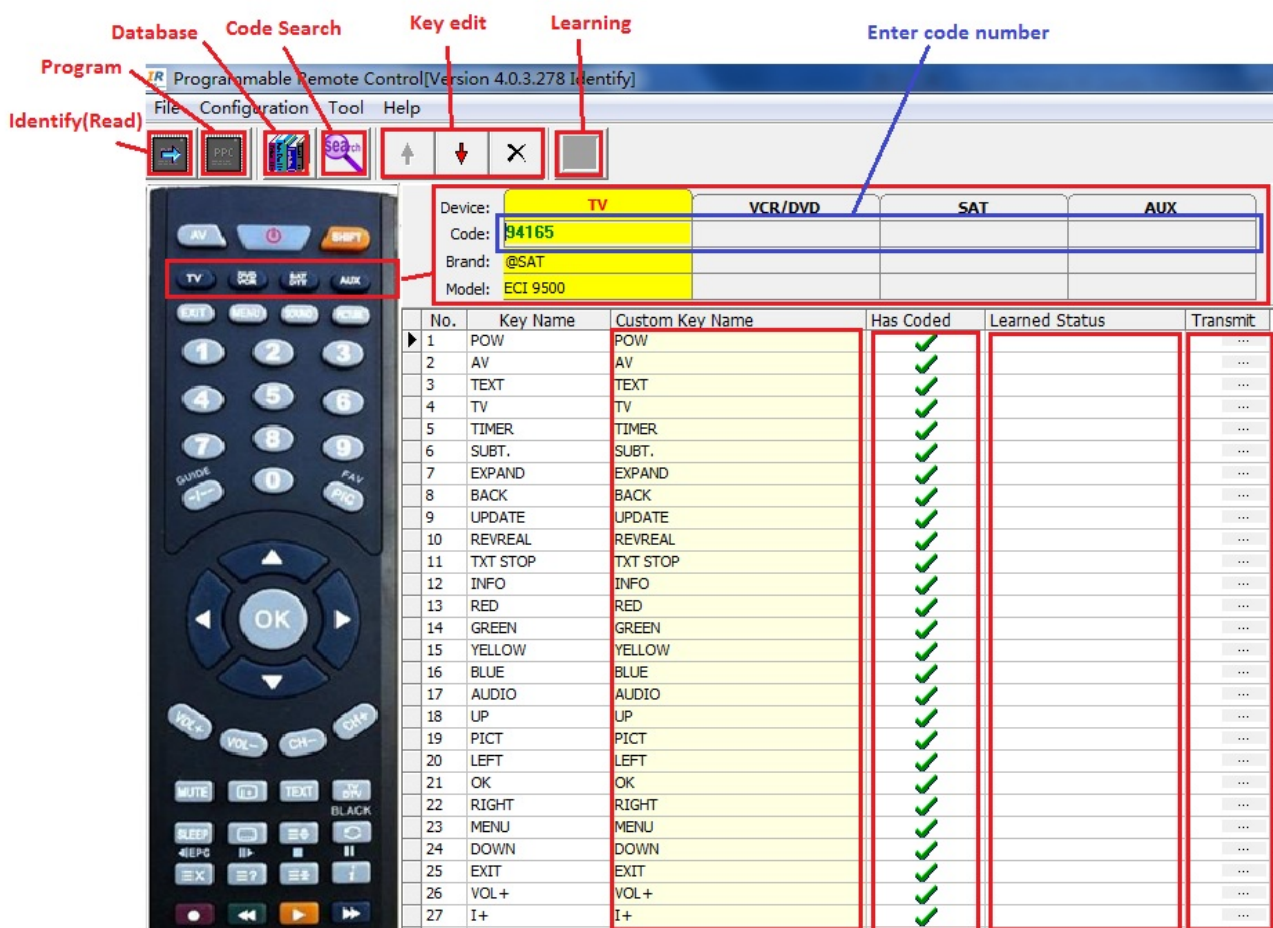


Photo 1

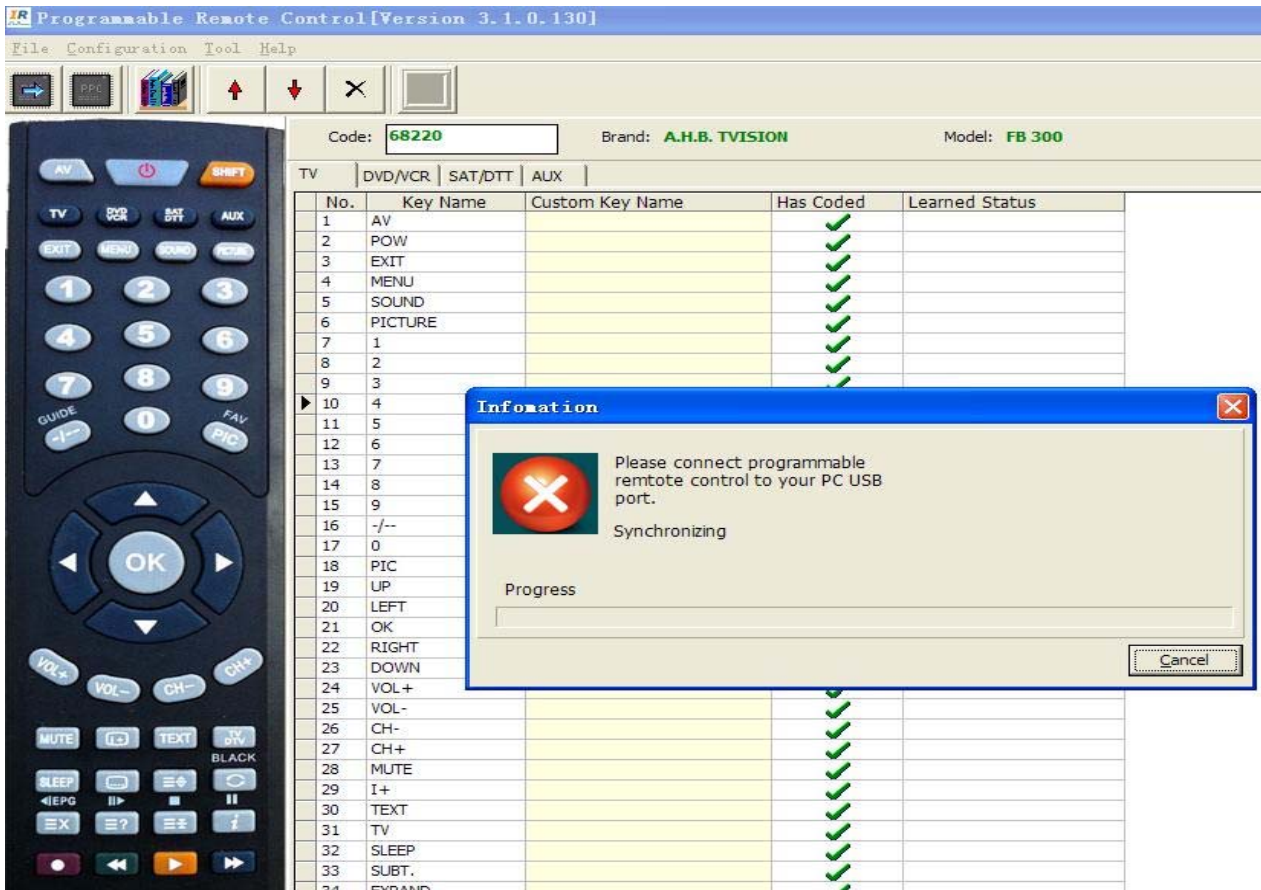


Photo 2 Program

Index

- 1, Description
- 2, Remote control
- 3, Identify(Read)
- 4, Code Program
- 5, Code Learn
- 6, Manage Database
- 7, Code Search
- 8, Some Useful Skills
- 9, Others
- 10, FAQ

1, Description

1) PC programmable remote control is an update product for traditional universal remote control. Its main difference and characteristic is the IR code database source.

Universal remote control contains IR code database in itself. PC programmable remote database is stored in PC or web server. So PC programmable remote has no risk to be out of date.

USB mode, please see below diagram.



2) Software

PC hardware request:

- CPU: 800MHZ and above
- RAM: 256Mbytes and above
- Hard diask, 4G bytes and above
- Operation system: Win 2000, Windows XP, Windows Vista, Windows 7.

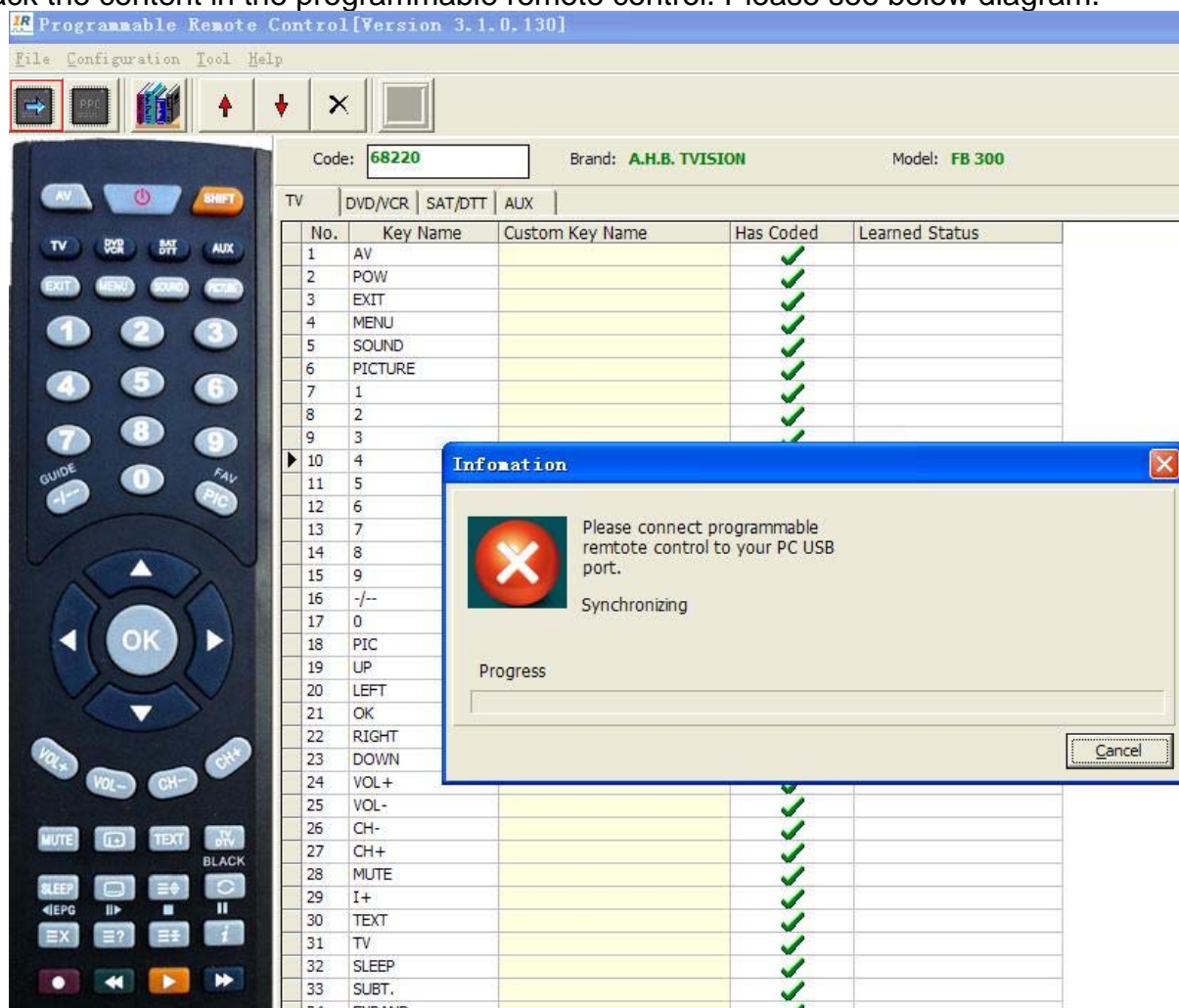
2, Remote control

This kind of remote looks same as universal remote control or learning remote control. It combines all functions of universal remote control and learning remote control.

It can be programmed with any code of any device. Because its key code can be programmed to any key, we can design any kind of remote control with any key

3, Identify(Read)

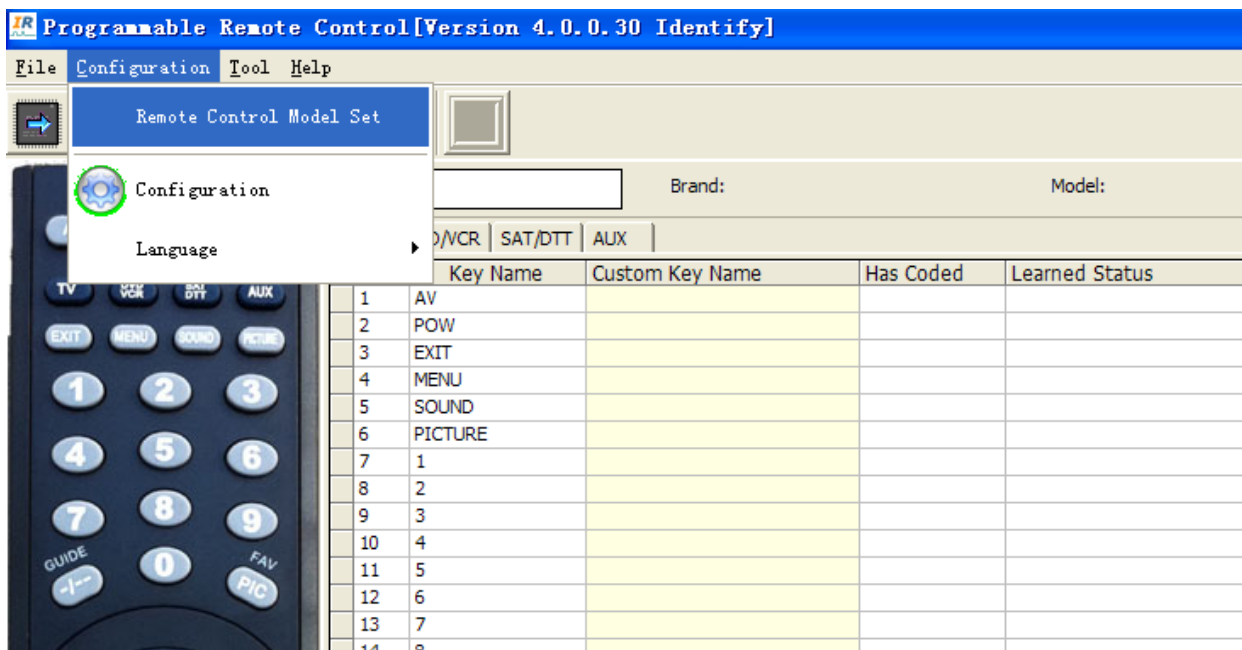
When first using or after programming, it can be identified by PC software and read back the content in the programmable remote control. Please see below diagram.

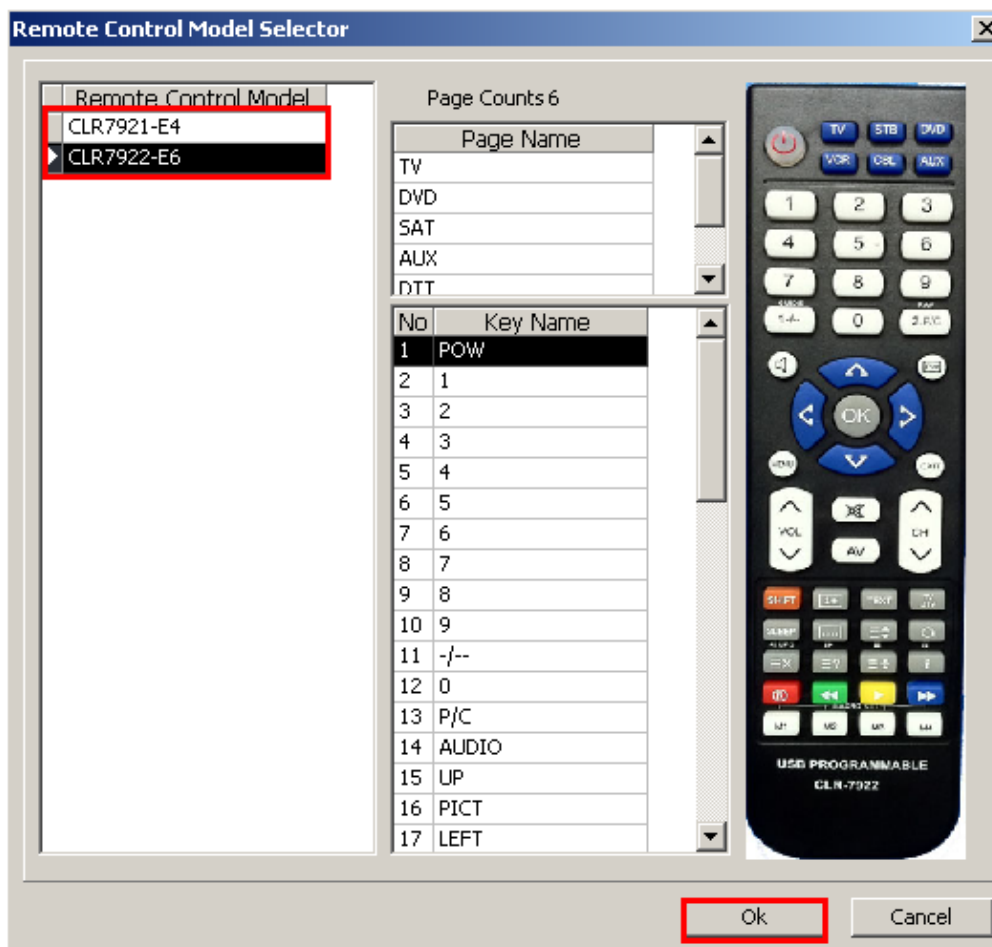


After identify, the photo and model of the programmable remote control will be identified to correct model and photo, the content of the programmable remote control will be read back and displayed in the software as above diagram, including Code, Brand, Model and key code info.

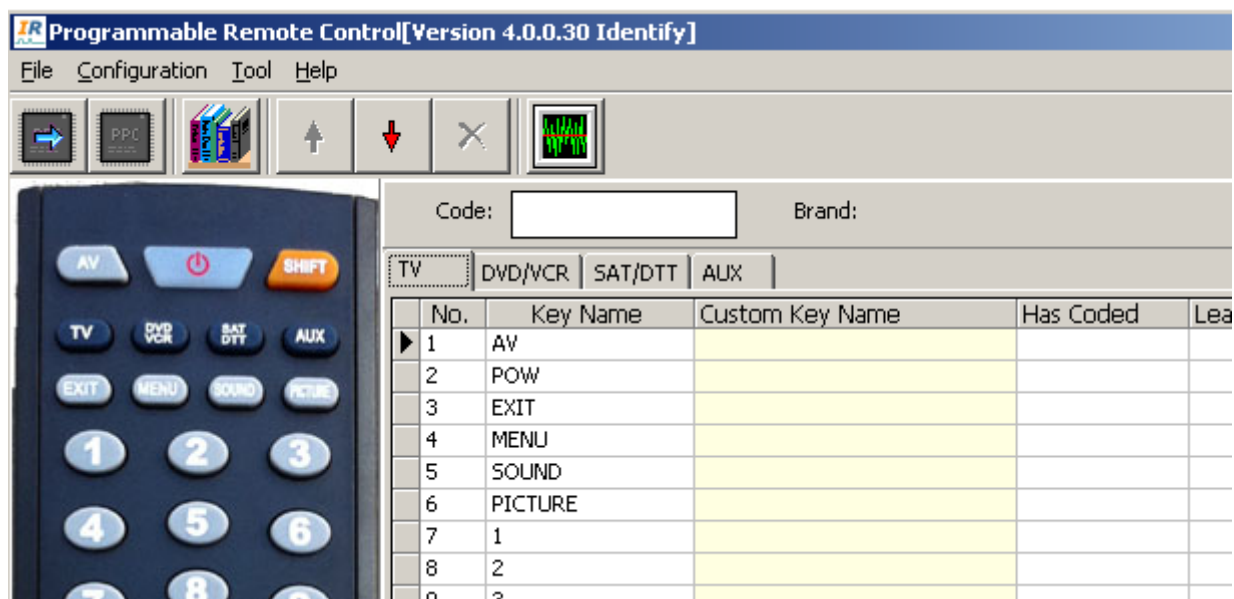
4, Code Program

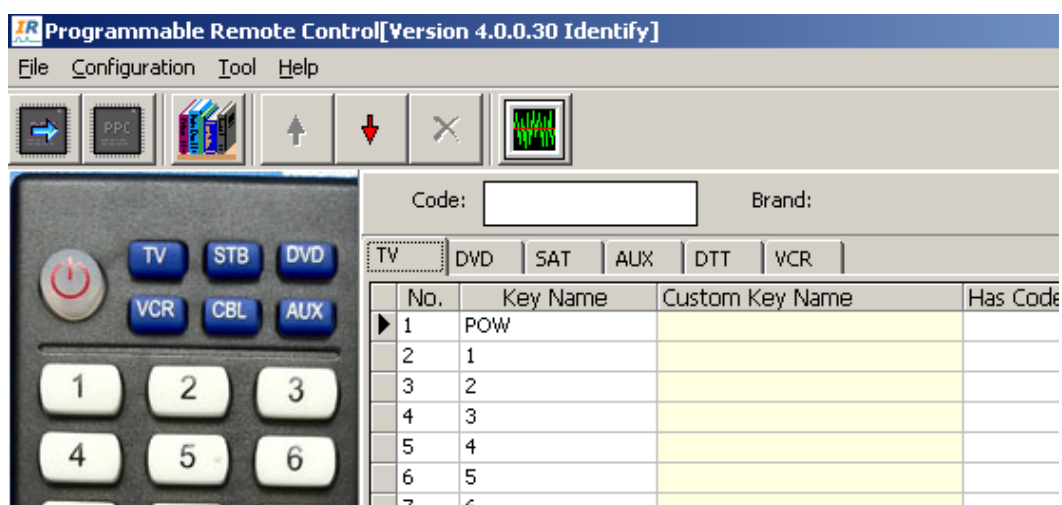
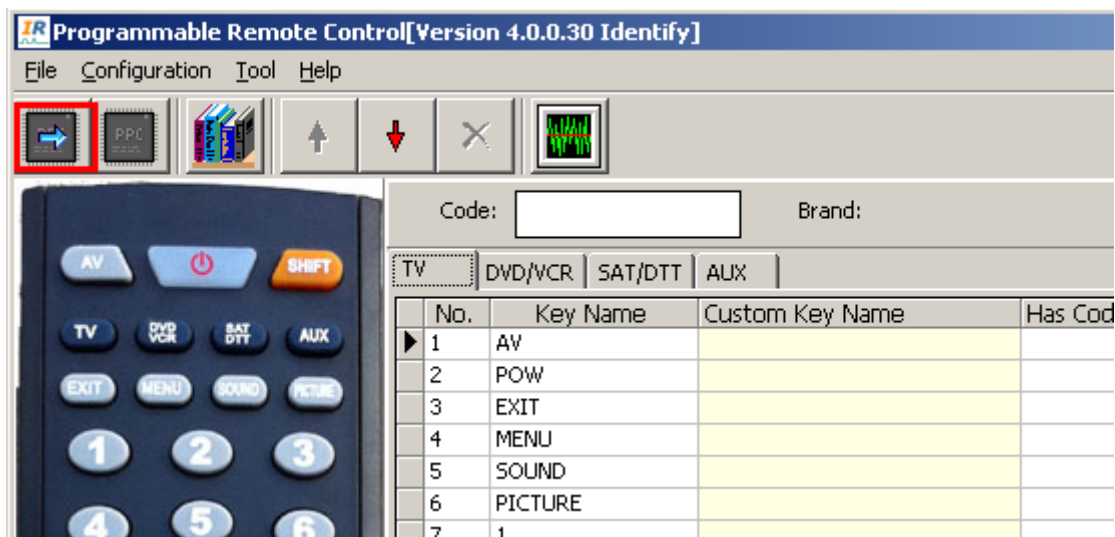
- 1) Before program, it should be selected the model of programmable remote control. You can select the model by hand or it can be identified automatically when using Identify function.





For V4 version, it can be identified by software and adjusted to correct model and photo. Before using, the model is CLR7921 as above photo, if you use CLR7922, after using, the remote model and photo will be changed to below photo. In the meantime, the code and info are also read back into PC software.

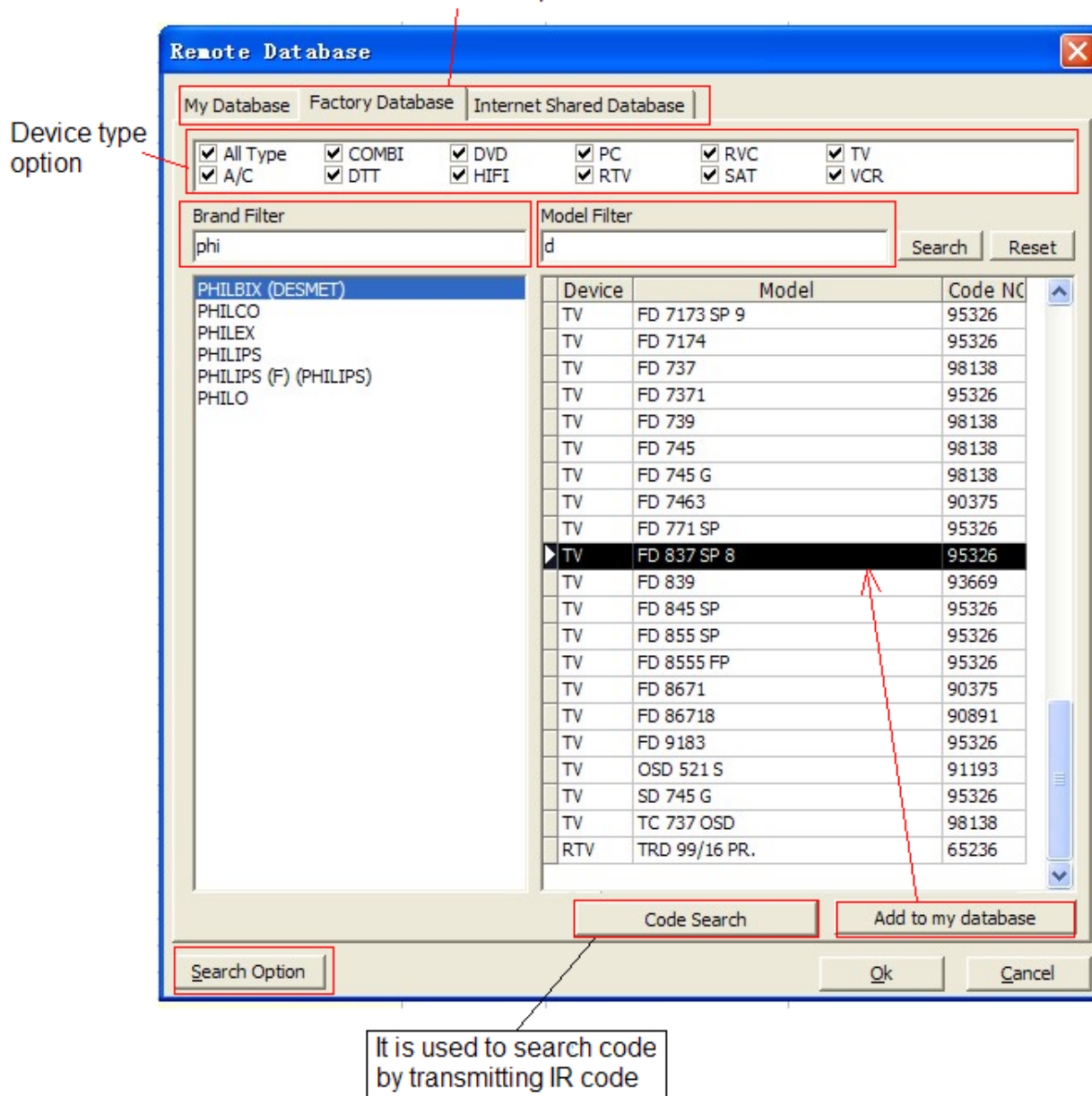




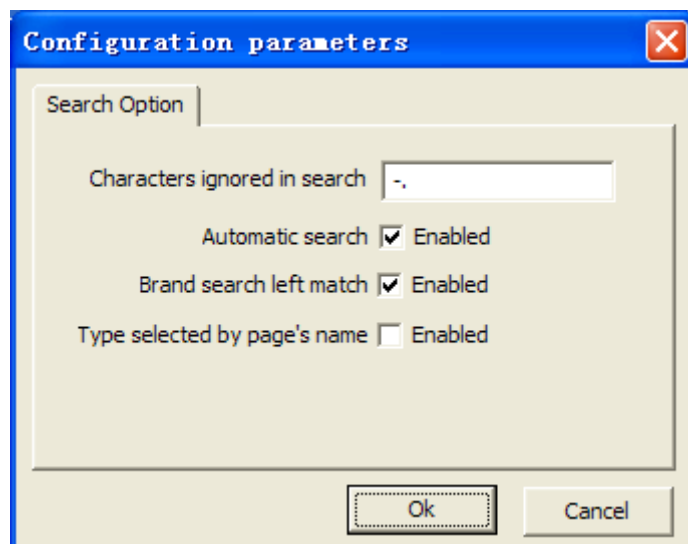
2) Search and select code in database

A) Please see photo 1 and find “Database” menu button, after pressing “Database” button, it appears below photo.

Database Option



- (1) My Database, Factory Database, Internet Shared Database
- (2) Device type option
- (3) Brand Filter, Model Filter,
The search result is different according to "Search Option".
- (4) Search Option



-----Characters ignored in search, this is for Brand filter and Model Filter.

-----Automatic search, means the result will change according to the characters entered if “enabled”.

-----Brand search left match, means it is only searched from prefix if “enabled”. If “enabled” is not selected, the entered characters will be searched anywhere.

-----Type selected by page’s name,

(5) Code Search

Please see Item 7, “Code Search”.

(6) Add to my database

Please refer to Item 6, “Manage database”.

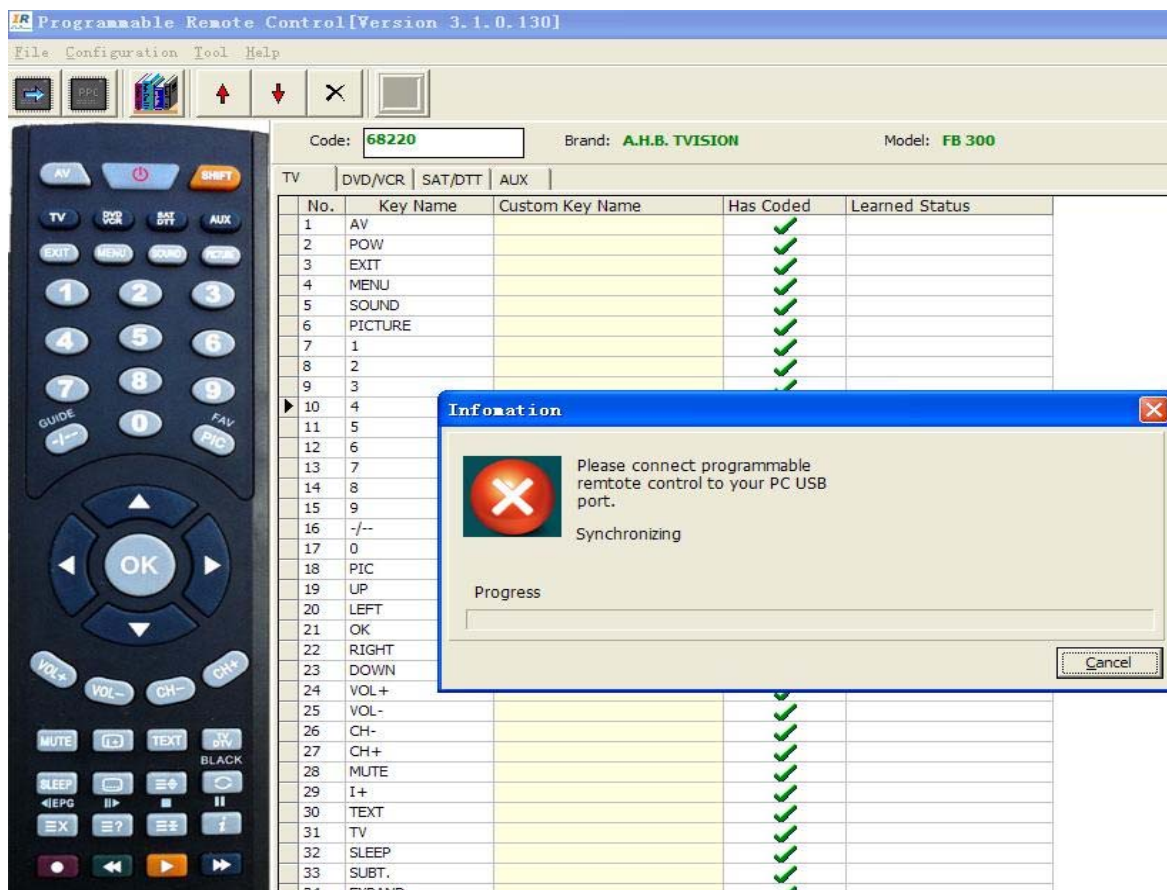
B) Once one of code is selected, you can press OK, then it will appear in the list of “Has coded”, in the meantime, Code number, brand and model name is displayed.

Code: Brand: Model:

No.	Key Name	Custom Key Name	Has Coded	Learned Status
1	AV		✓	
2	POW		✓	
3	EXIT		✓	
4	MENU		✓	
5	SOUND		✓	
6	PICTURE		✓	
7	1		✓	
8	2		✓	
9	3		✓	
10	4		✓	
11	5		✓	
12	6		✓	
13	7		✓	
14	8		✓	
15	9		✓	
16	-/--		✓	
17	0		✓	
18	PIC		✓	
19	UP		✓	
20	LEFT		✓	
21	OK		✓	
22	RIGHT		✓	
23	DOWN		✓	
24	VOL +		✓	
25	VOL -		✓	
26	CH -		✓	
27	CH +		✓	
28	MUTE		✓	
29	I +		✓	
30	TEXT		✓	
31	TV		✓	
32	SLEEP		✓	
33	SUBT.		✓	
34	EXPAND		✓	
35	BACK		✓	

Then select one code for each device bank as shown above, TV, VCR/DVD, SAT and AUX.

C) Program(write)





After all codes are decided, press “ Program” menu button, place remote toward the USB remote control head to head, press “left” and “right” button simultaneously, then appear above photo. After it finishes, program(write) succeed.

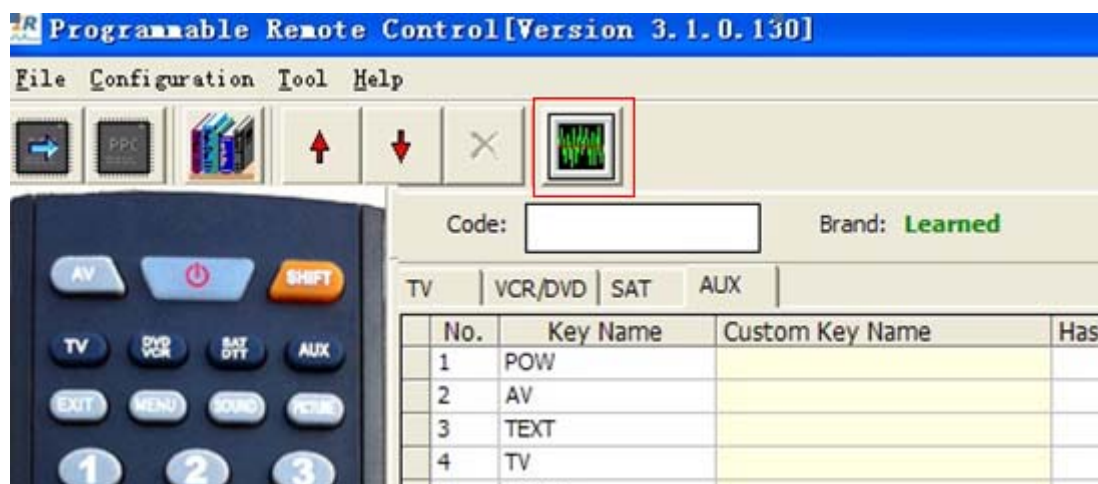
3) Search by code number

If you remember the code number, you enter the code number, the code will appear in the table immediately.

5, Code Learn


- 1) Press the learning button in software as below.

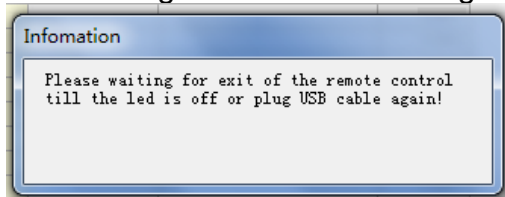
After USB remote control is connected to PC correctly,  will become green from gray color .



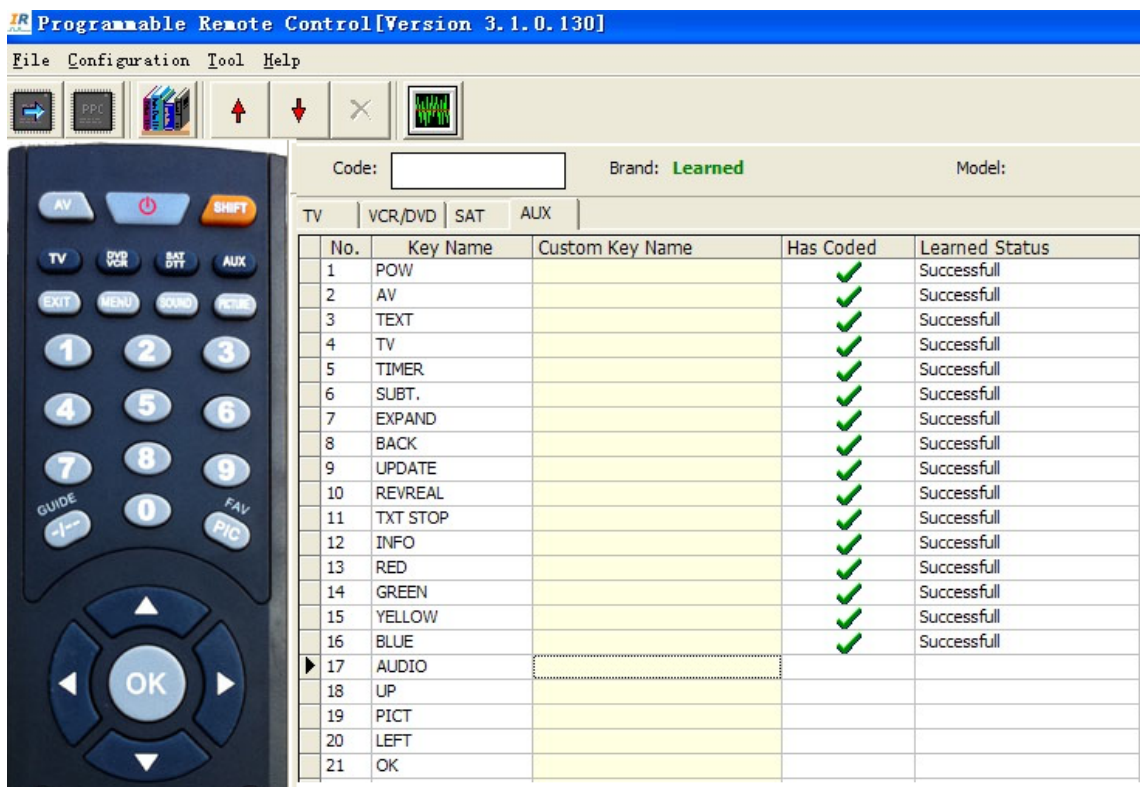
- 2) Place the original remote control toward the USB remote control, leave 2-10cm.



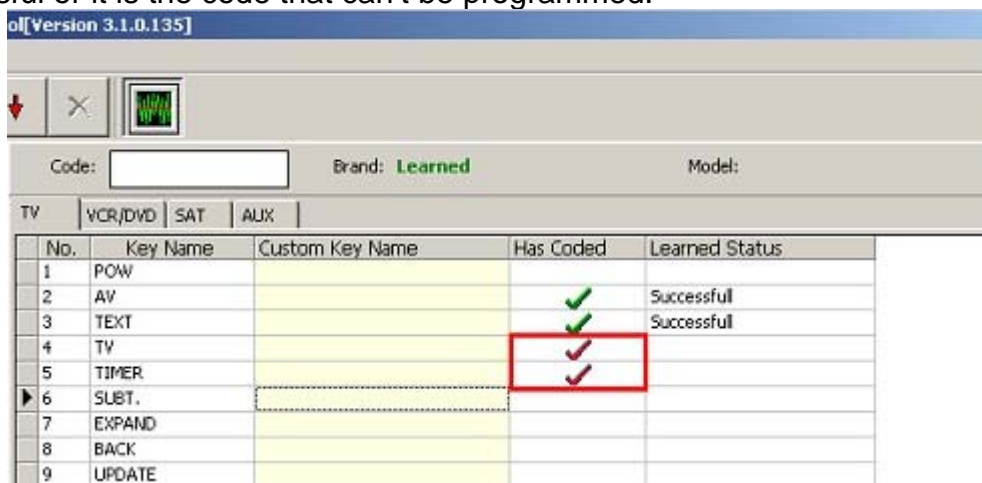
- 3) Then, place the cursor to the key line you want to learn, then press key. PC receives the IR signal and will display the status of learning result.
- 4) Exit learning mode: Press  again, then popup a message window as below.



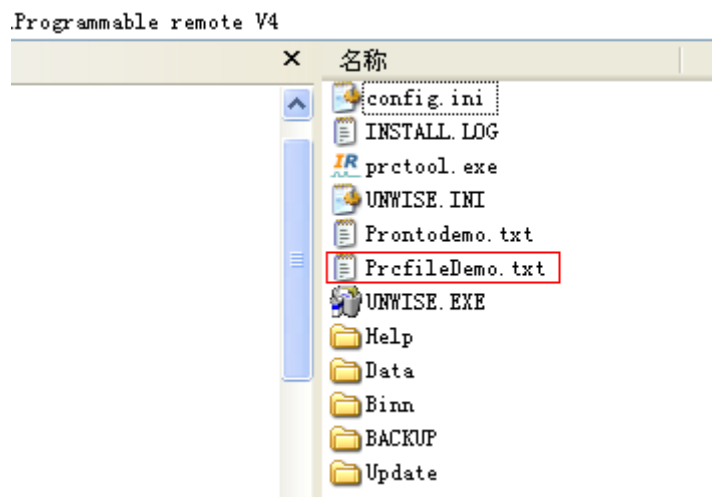
After unplug the USB cable, please remember to press the key for one time then plug the USB cable to PC again.



If learning result display below photo, red rectangle, it means the learning is not successful or it is the code that can't be programmed.



The learning result can be output to hard disk. Let us see the sample result in install directory ..\Programmable remote V3 or ..\Programmable remote V4,



Open it, its content is as below photo.

```
FileFormat=PRCTOOL
Remote control describe=:
Device=PC
Brand=UnkownBrand
Model=33
```

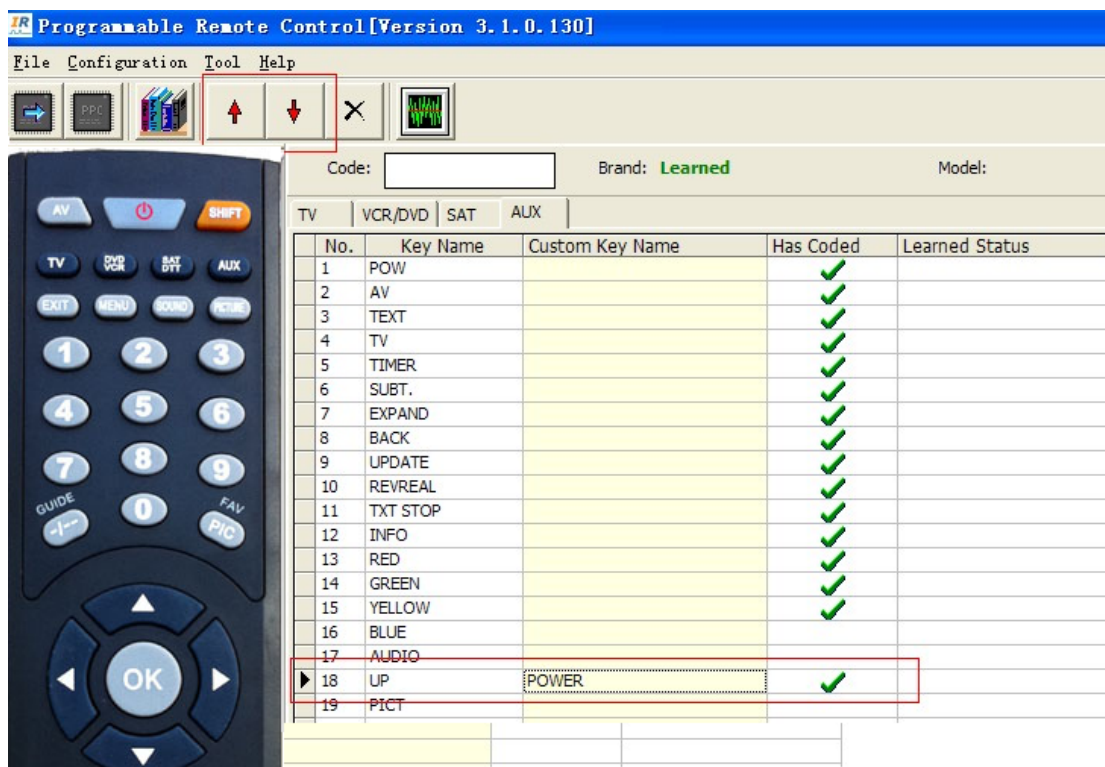
```
Button's counts=4
0,POW=0031 47 0
6,1=0040 47 8
7,2=0040 47 10
```

```
8,3=A881 001E 0022 0000 00FF 000709 0135 0002EA
0135 0002EA 0135 0002EA 00FF 000709 0135 0002EA
0135 0002EA 00FF 000709 0135 0002EA 0135 0002EA
00FF 000709 00FF 000709 0135 0002EA 0135 0002EA
0138 00548A 00FF 000709 00FF 000709 00FF 000709
0135 0002EA 0135 0002EA 0135 0002EA 00FF 000709
0135 0002EA 0135 0002EA 00FF 000709 0135 0002EA
0135 0002EA 00FF 000709 00FF 000709 0135 0002EA
0135 0002EA 0138 00548A
```

```
14,7=0040 47 30
```

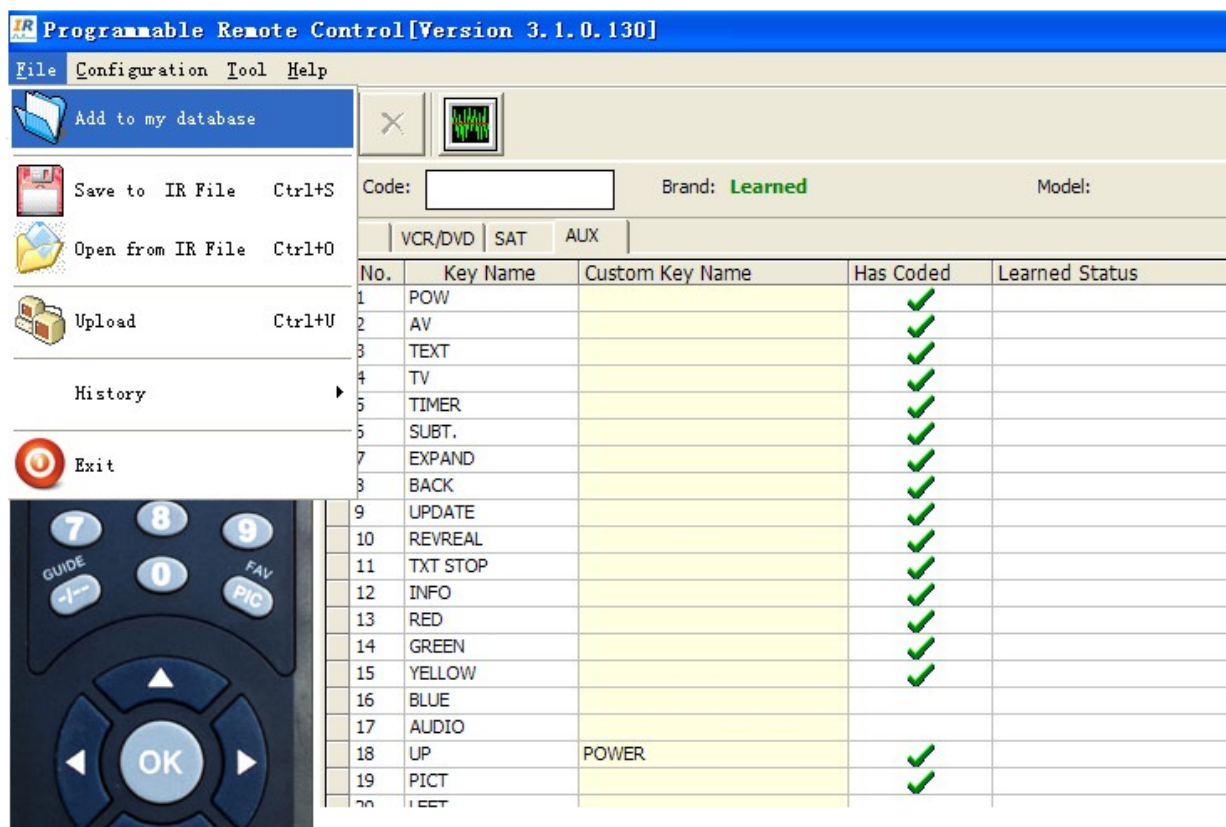
This result in rectangle is a kind of IR wave data, which should be processed then can be programmed into USB remote control. For more detail, please browse supplier's website or remote control data center.

(1) Key code adjust



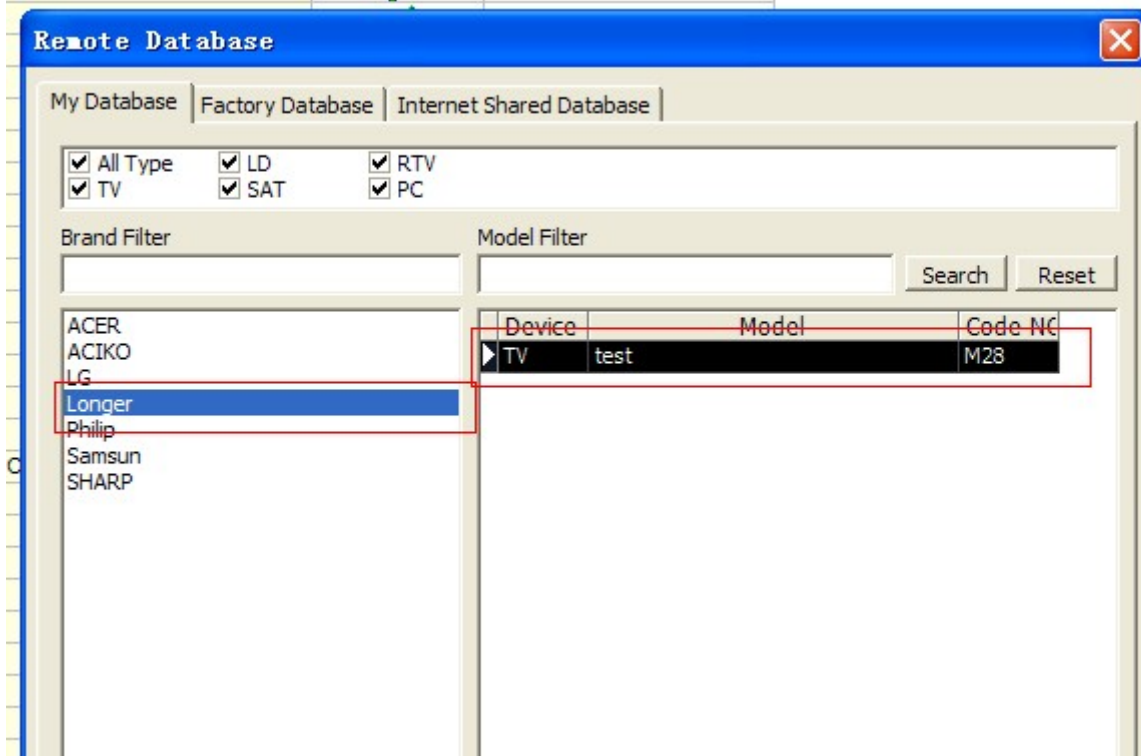
You can add or edit a custom key name, then press "up" and "down" arrow button, that means you adjust the code position.

(2) Store to my database

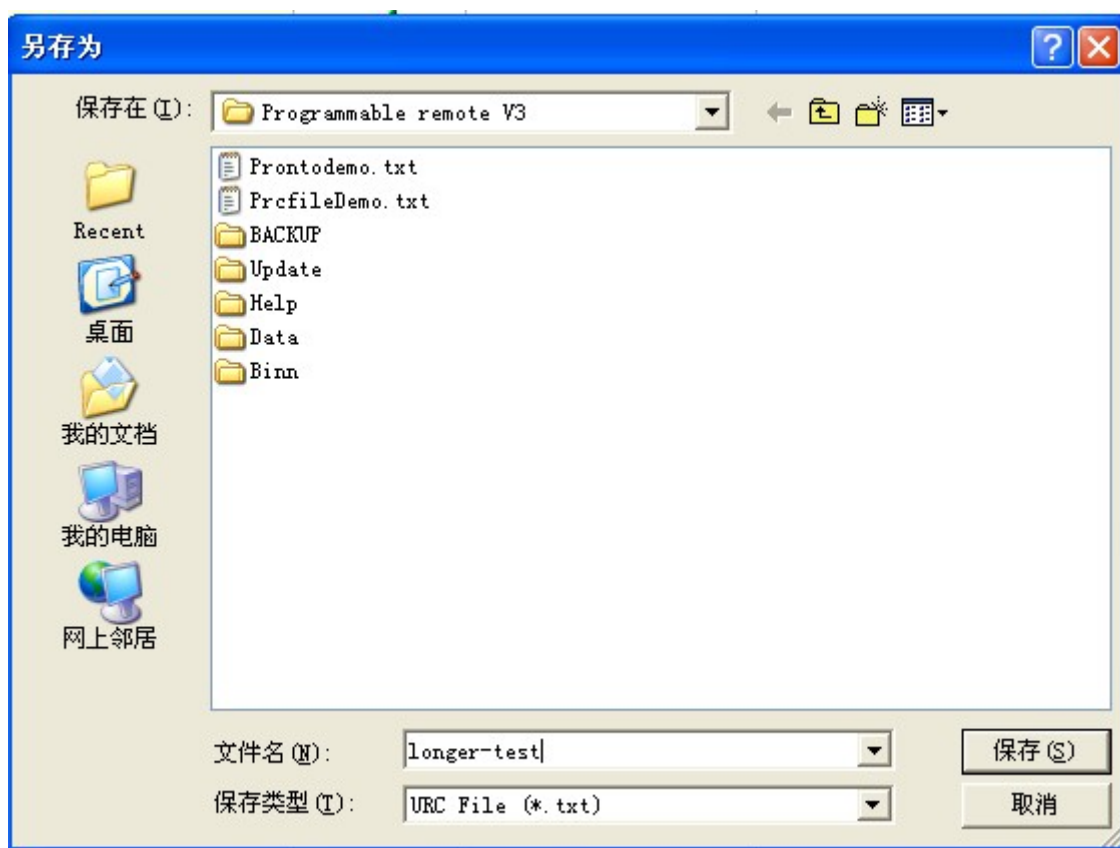
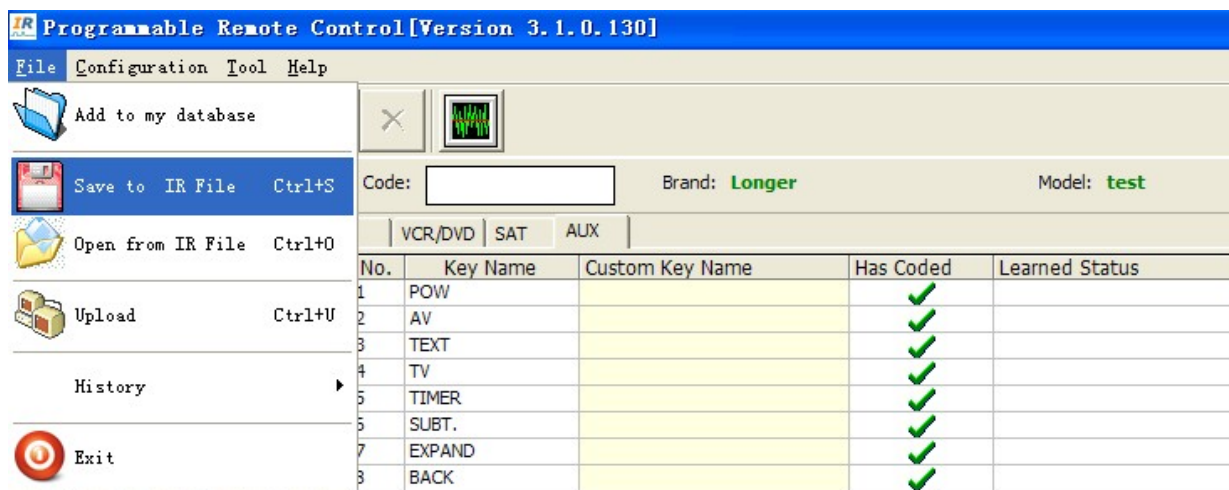




Then, we can find this code record in "My database" as below.



(3) Output to PC hard disk



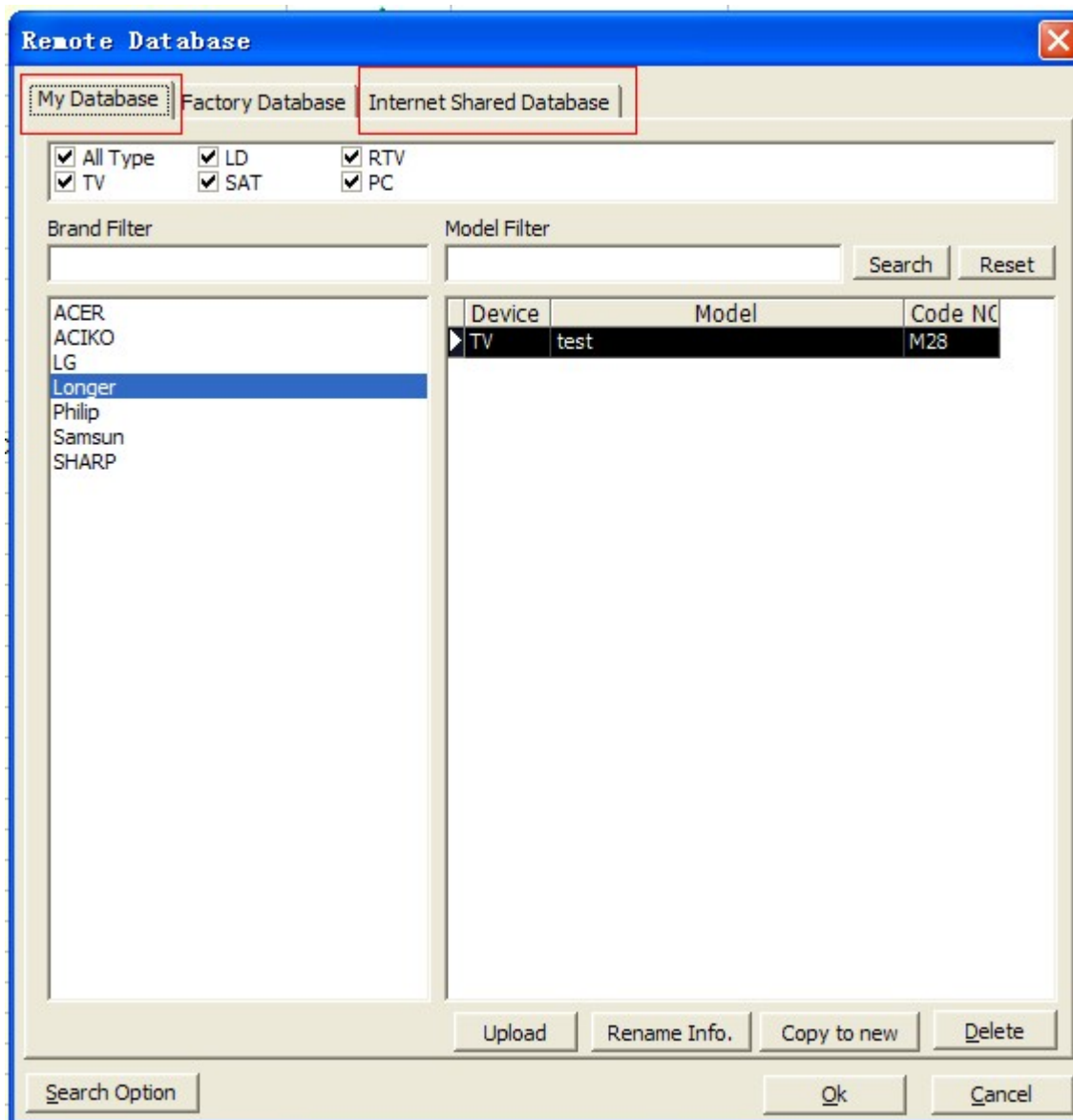
Then you can find the Longer-test.txt file in harddisk. Let's open this txt file, we can see as below.


```
longer-test.txt - 记事本
文件(F) 编辑(E) 格式(O) 查看(V) 帮助(H)
FileFormat=PRCTOOL
Remote control describe=:
  Device=TV
  Brand=Longer
  Model=test

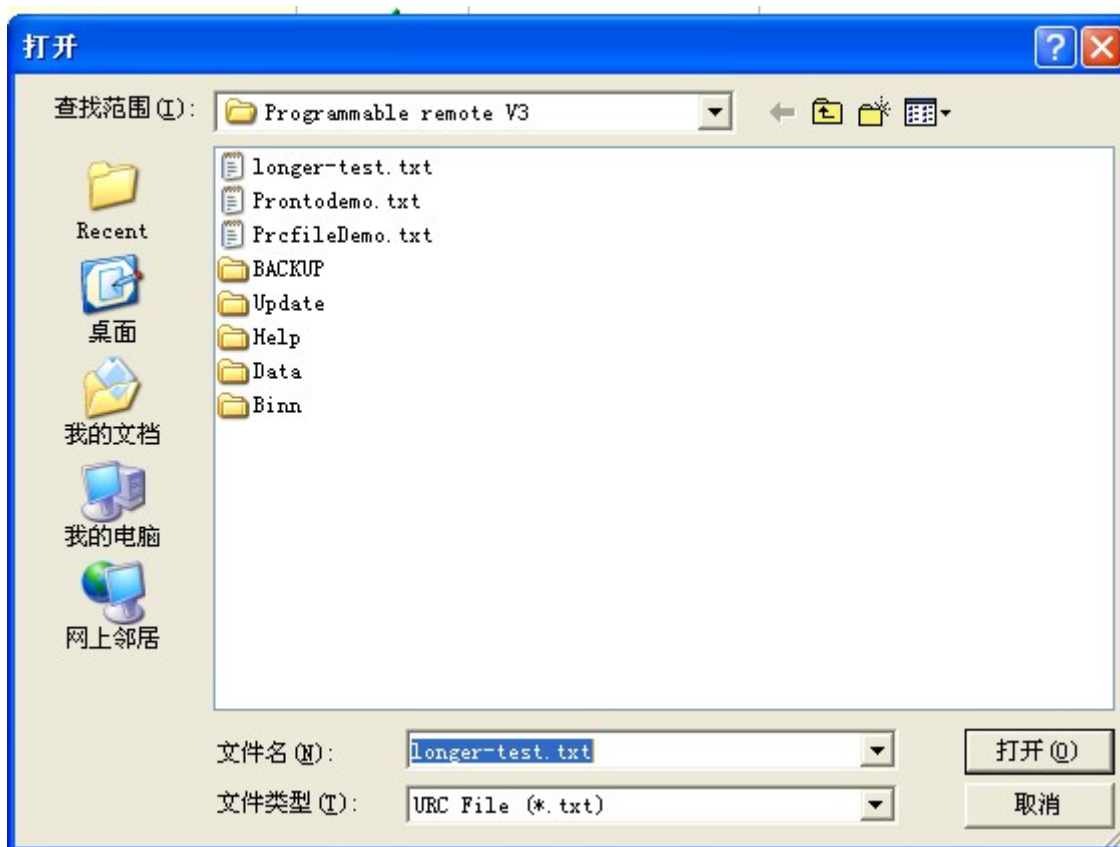
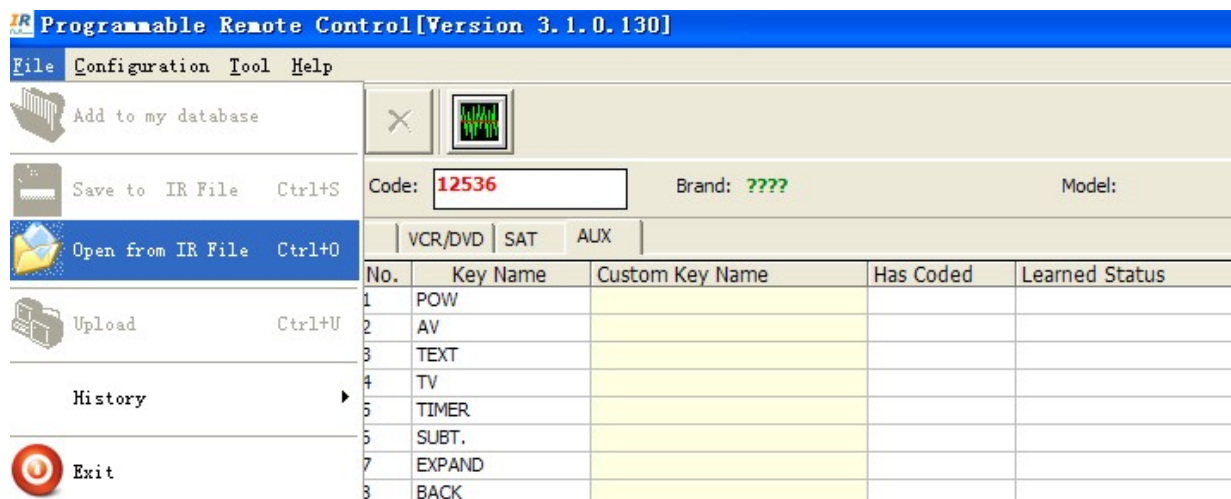
Button's counts=17
0,=0051 0 FF 13
1,=0051 0 FF 12
2,=0051 0 FF 19
3,=0051 0 FF 12
4,=0051 0 FF E
5,=0051 0 FF 14
6,=0051 0 FF 6
7,=0051 0 FF 7
8,=0051 0 FF A
9,=0051 0 FF C
10,=0051 0 FF E
11,=0051 0 FF E
12,=0051 0 FF E
13,=0051 0 FF F
14,=0051 0 FF 13
17,POWER=0051 0 FF 10
18,=0051 0 FF 16
```

6, Manage database

- 1) The code info in My database and "Internet shared database" can be added, deleted, imported/outputted. It lets the VIP user setup own database.



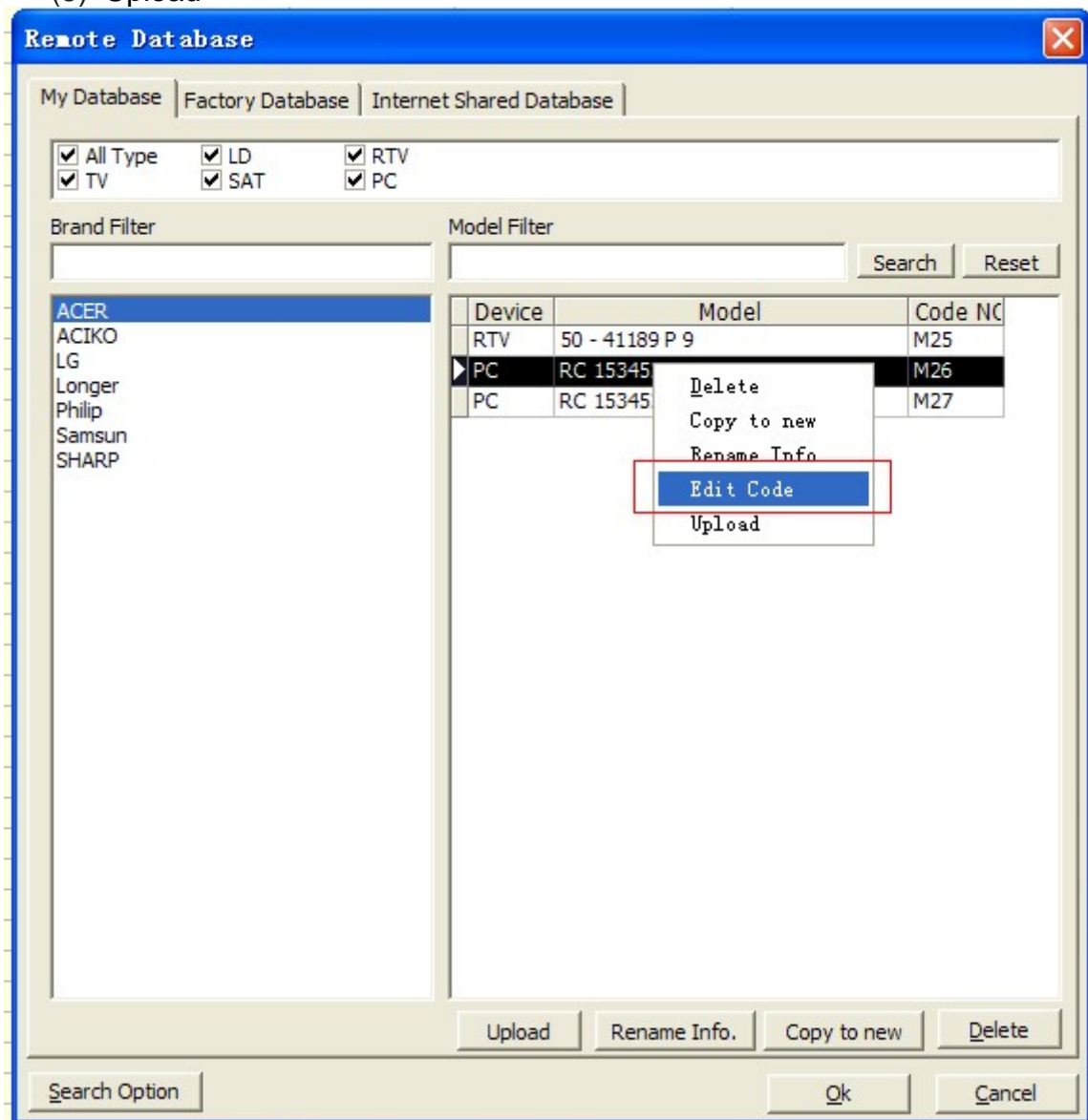
- 2) My database
 - New code in my database can be imported from PC file, "Factory database", "Internet shared database" and learning code.
 - a) Open from IR file

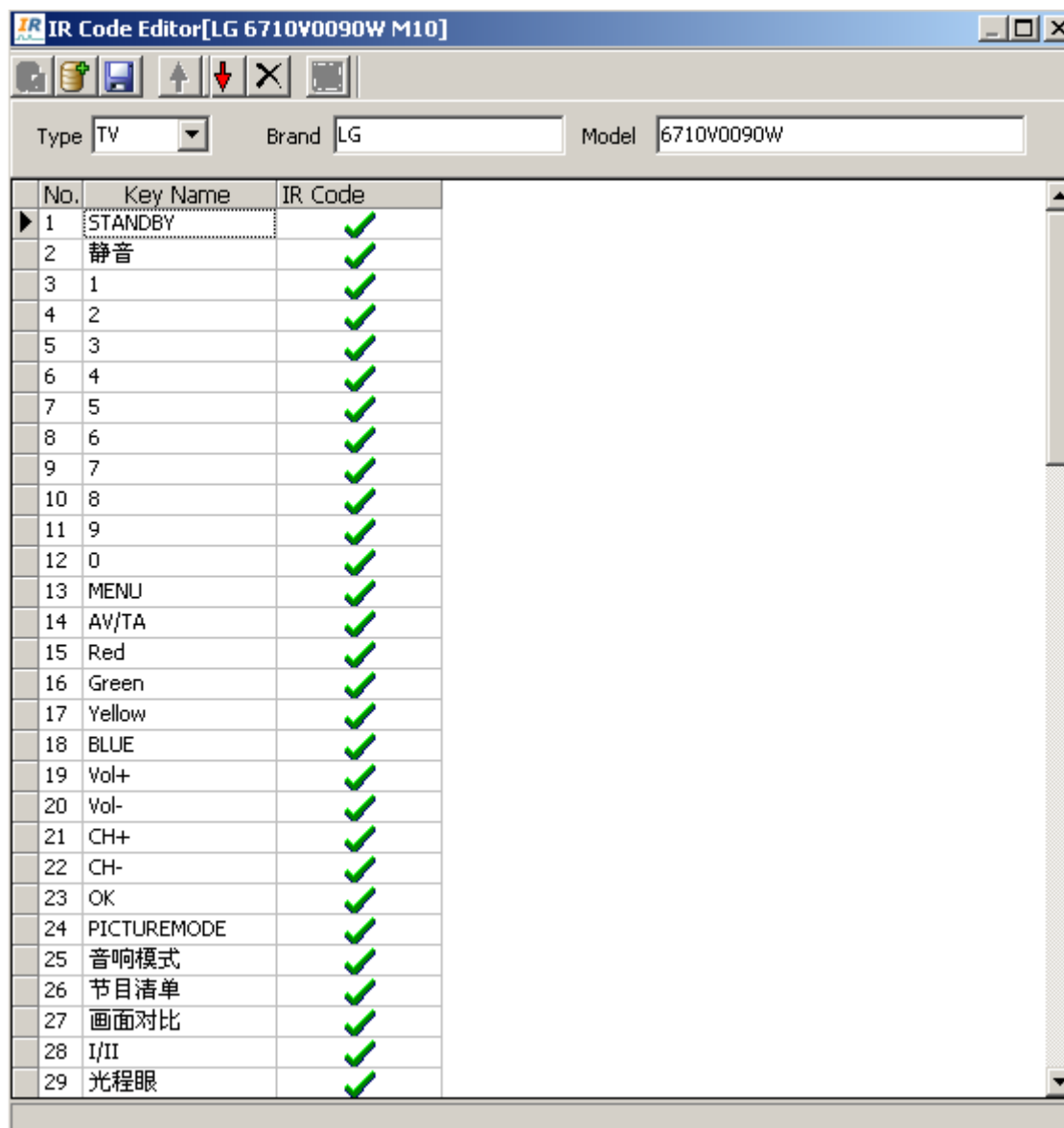


- b) Add to my database from "Factory database", "Internet shared database" and learning code
- c) Code learn
Refer to item 5 "Code learn" to learn how to get a code by learning.
- d) Edit the code in "My Database"
Select one code as below photo, click right button of Mouse, it appears below option.
 - (1) Delete
 - (2) Copy to new
 - (3) Rename Info








(4) Edit Code

(5) Upload



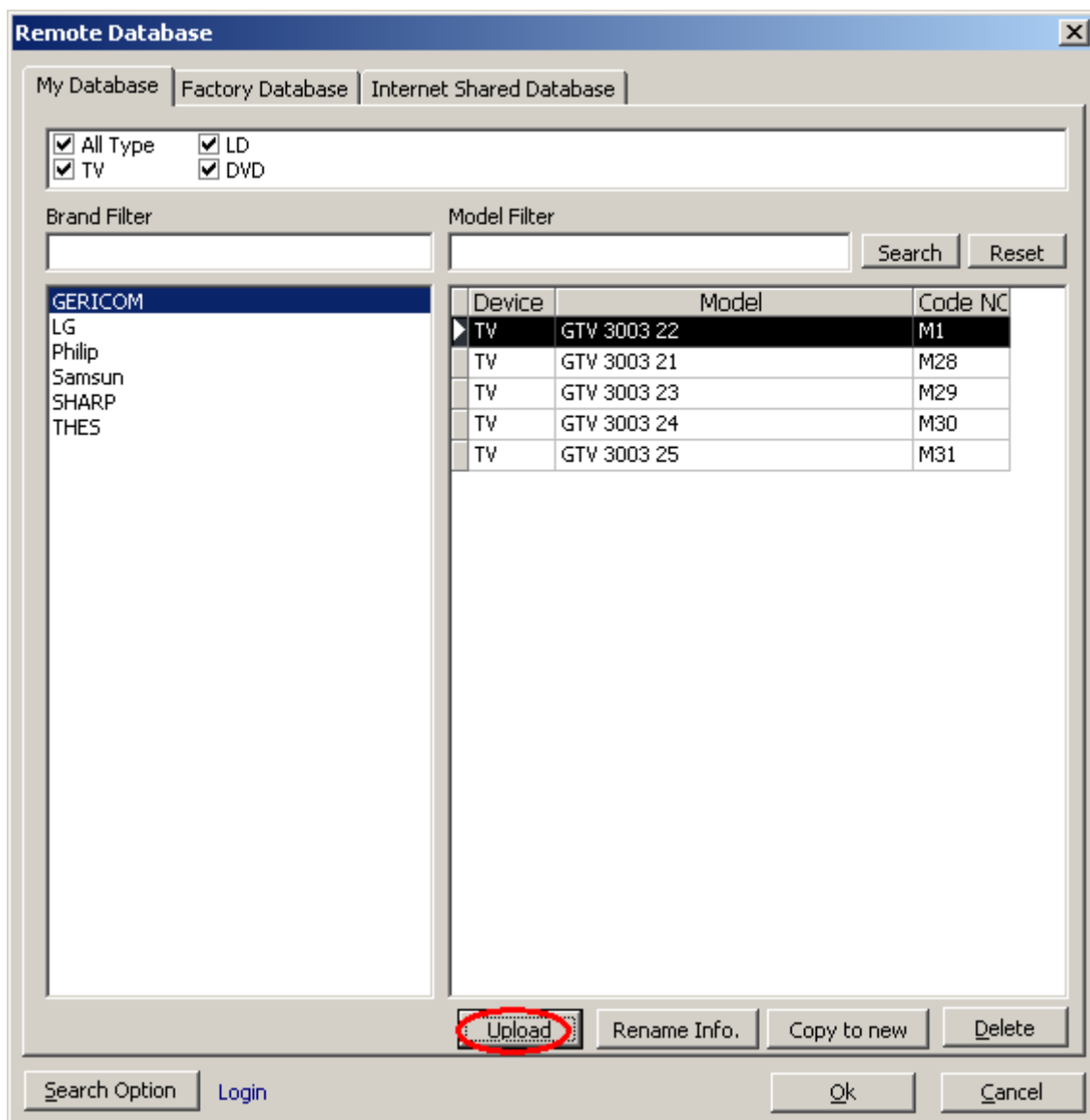


There are below functions to edit code.

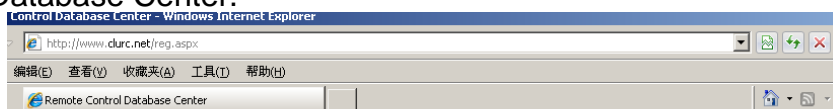
- a)  Save into my database
- b)  add to my database
- c)  save to IR file(TXT)
- d)  adjust up
- e)  adjust down
- f)  delete
- g)  Learning

3) Internet Shared Database


In My database, any code can be upload to server.



When uploading, it needs user to login. You can register in www.clurc.net, which is Remote Control Database Center.

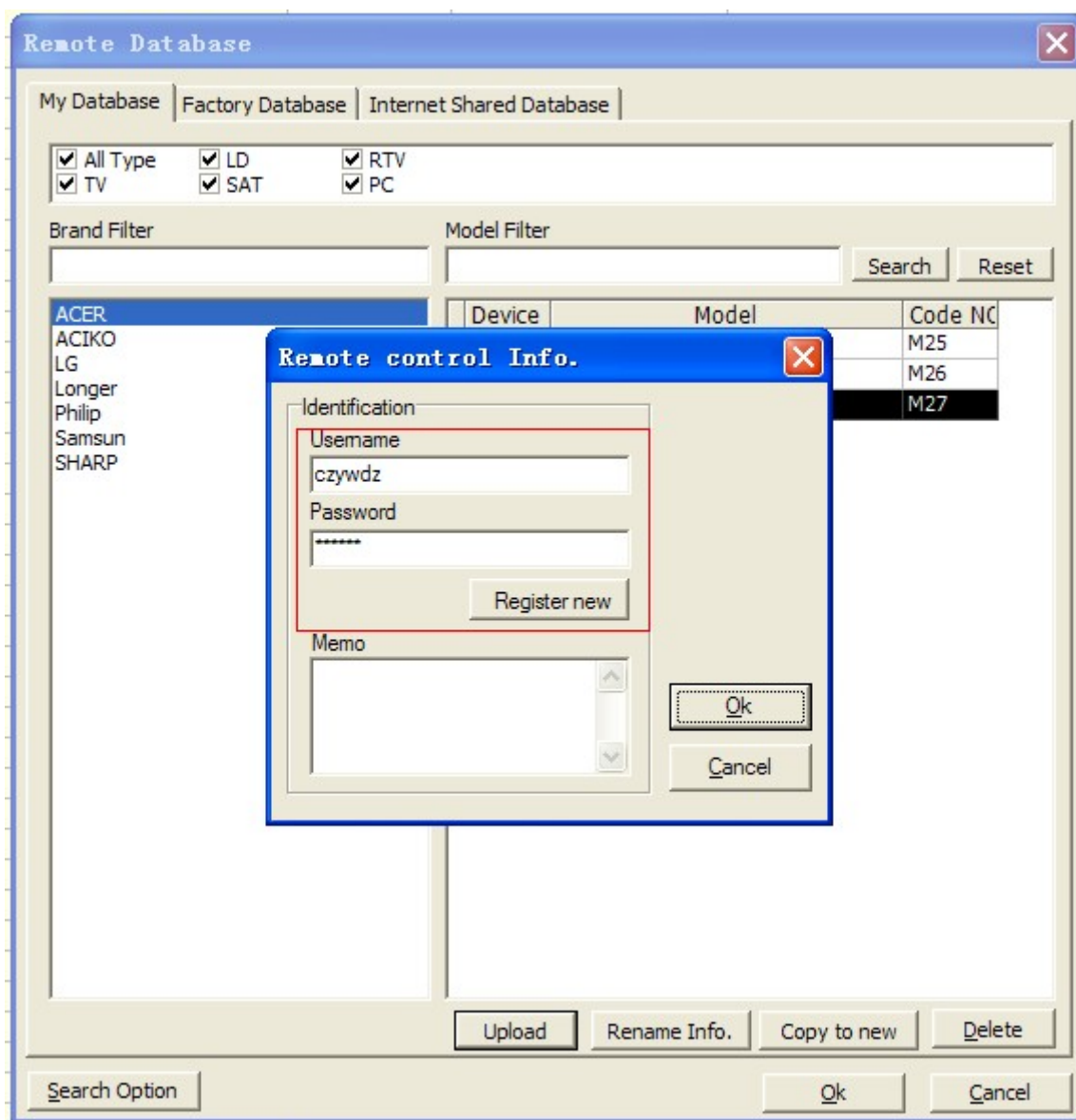
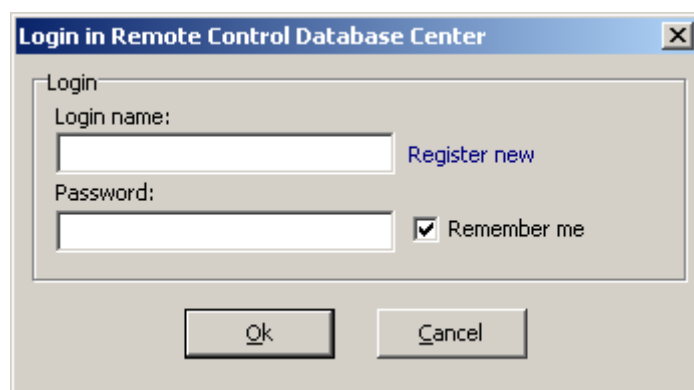


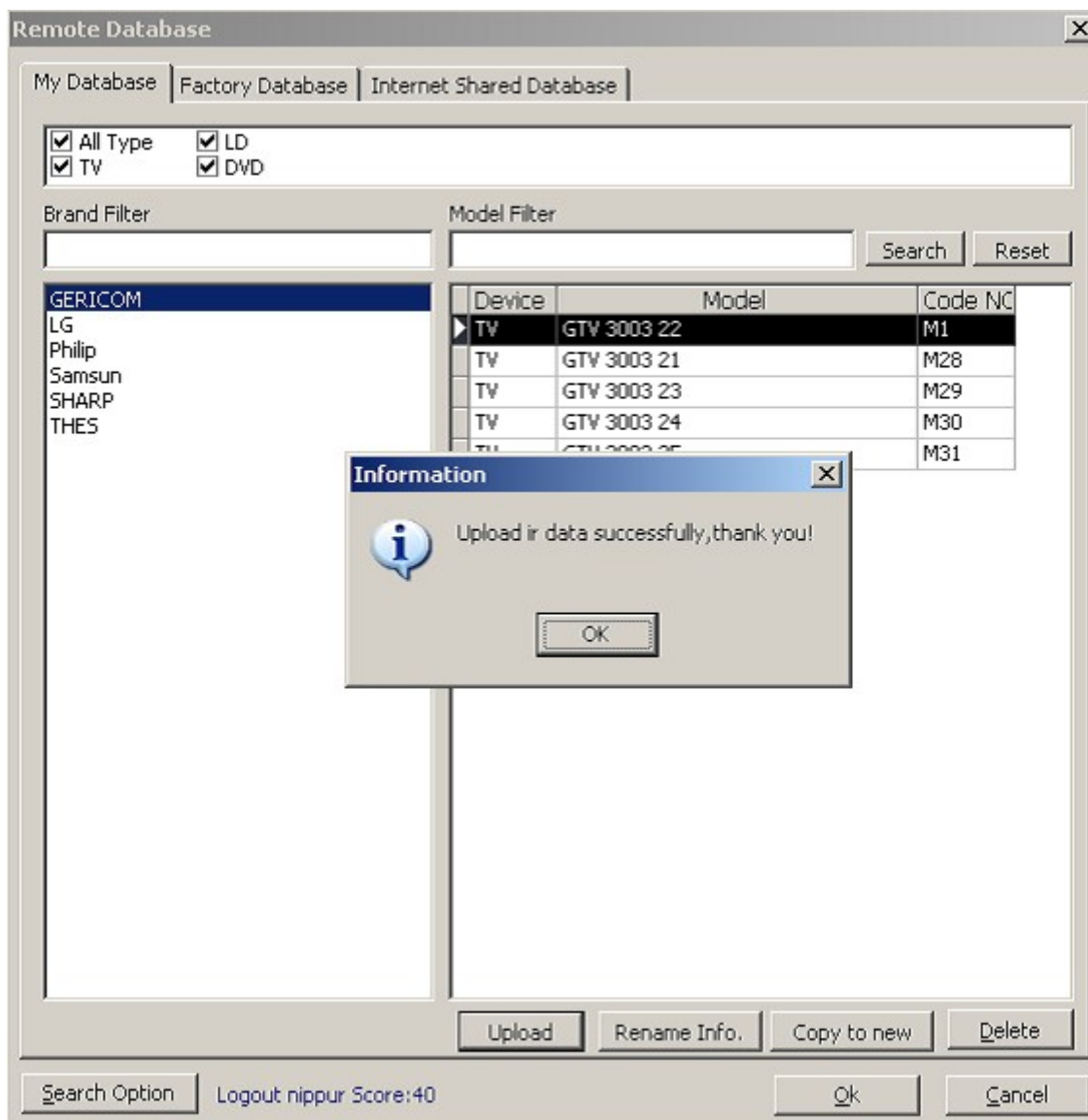
Remote Control Database Center

Email: Please enter your e-mail commonly used to activate your mem
 UserName: ❌ 5-15 characters (only letters, digits and underline "_" allow
 Password: ✅ 6-16 characters (&%;!@<>+ not allowed), case sensitive
 Confirm: Please enter the password of above.
 Verify Code: 

4)

After you register, you can login to upload the data code.



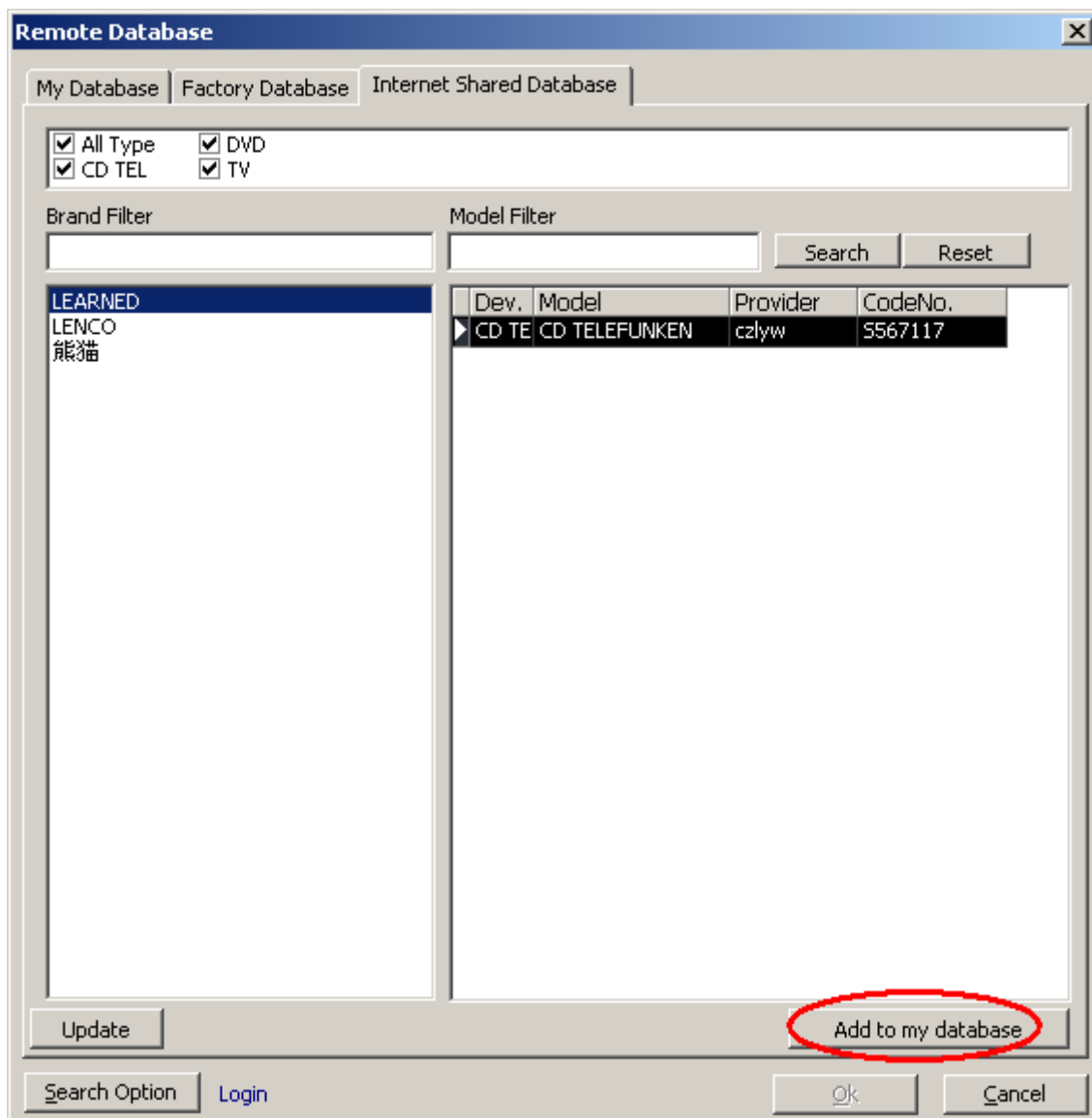


After uploading the IR code, it will be shown in "Internet shared database". In the meantime, it will appear in the upload database of website www.clurc.net.

When the "Internet shared database" is opened each time, software will try to connect to web server.



After connecting the server, then the new code info in the web server will be displayed in the software. But it can't be used to program directly. You have to "Add to my database", then it can be used to program.



7, Code search

If you only know device type (TV,DVD,...), don't know brand name, model name, you can use this function to search the code. When you meet a device, you are not able to find its remote or replacement, please try this function, maybe it can help you.

How to use this function?

It is very simple. Please connect USB remote to PC and put toward your device.

There are 3 kinds of code search function. Key code search, transmitting search and learning search.

1) Key code search

It can be used to search the database to match selected or assigned remote control. See photo below.

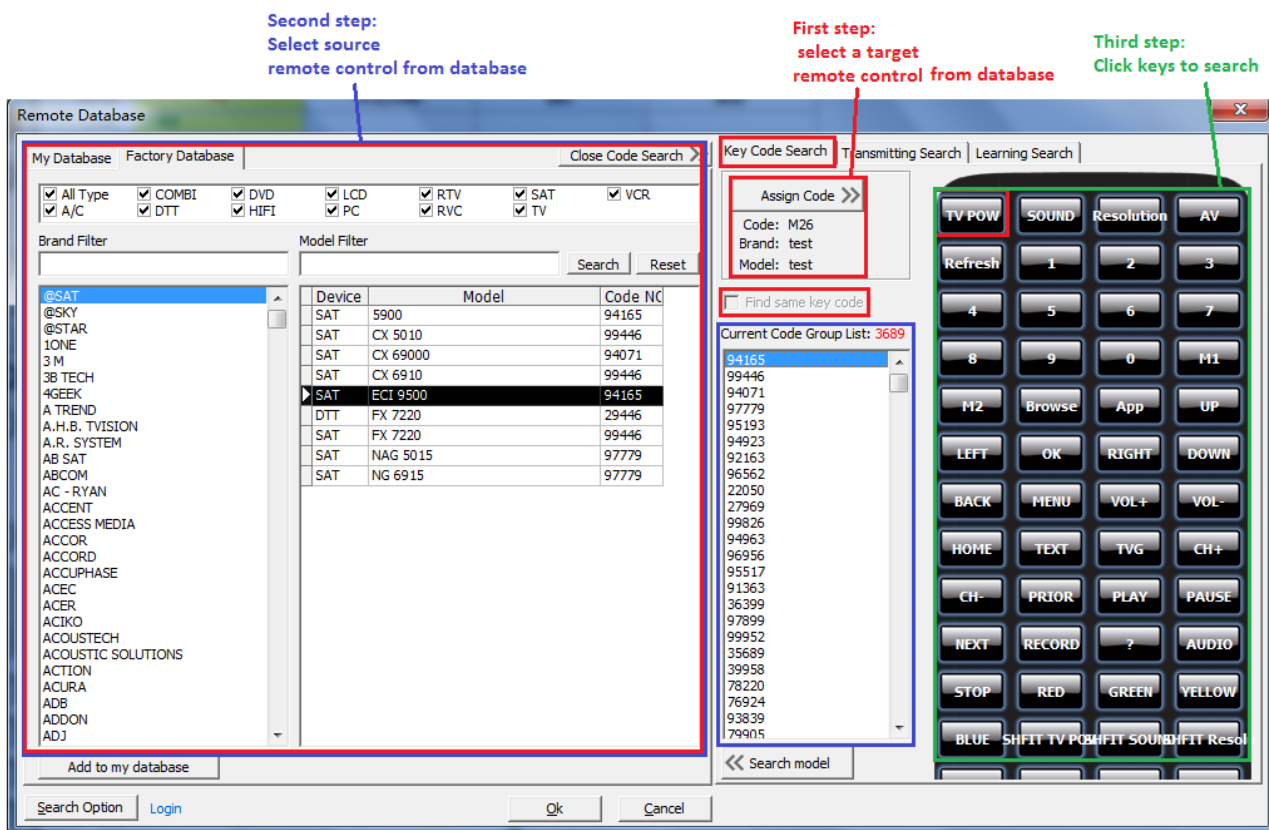
First step: select a target remote control from "my database" or "system database".

Then click "Assign code" to select this code to right remote control map.

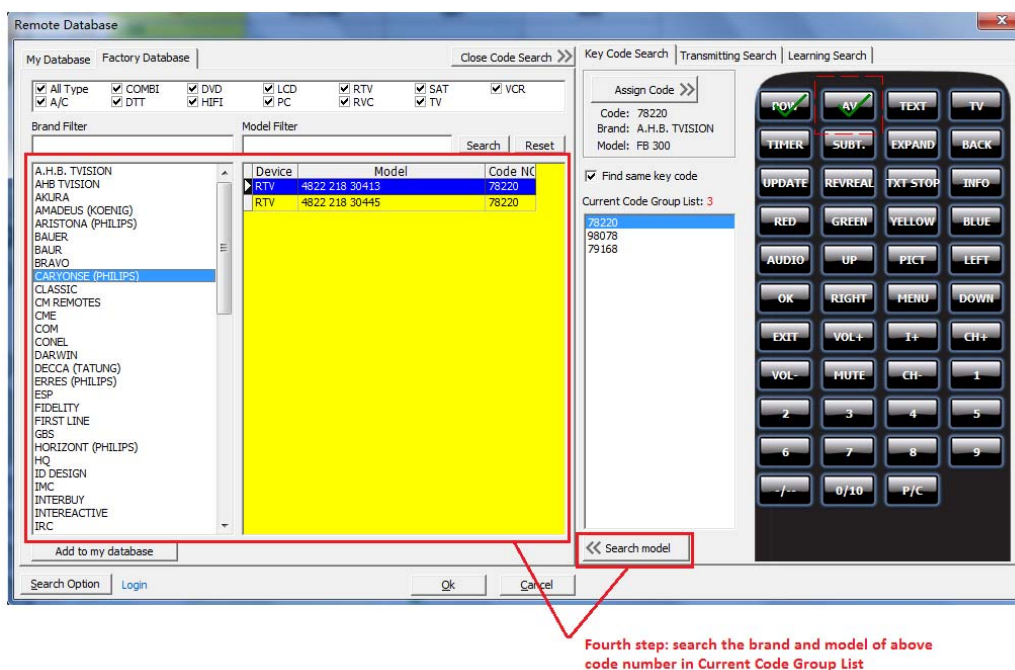
Second step: select source remote control range from "my database" or "system database". You can enter key words of brand or model to limit the range. After selecting, the searched key code number will appear in "Current Code Group List: ". The quantity display beside.

Third step: Click the key in right remote control map and double click to search the key to match in the code range in " Current Code Group List ". The searching result also displayed in this list.

User manual for USB programmable remote control (V13)

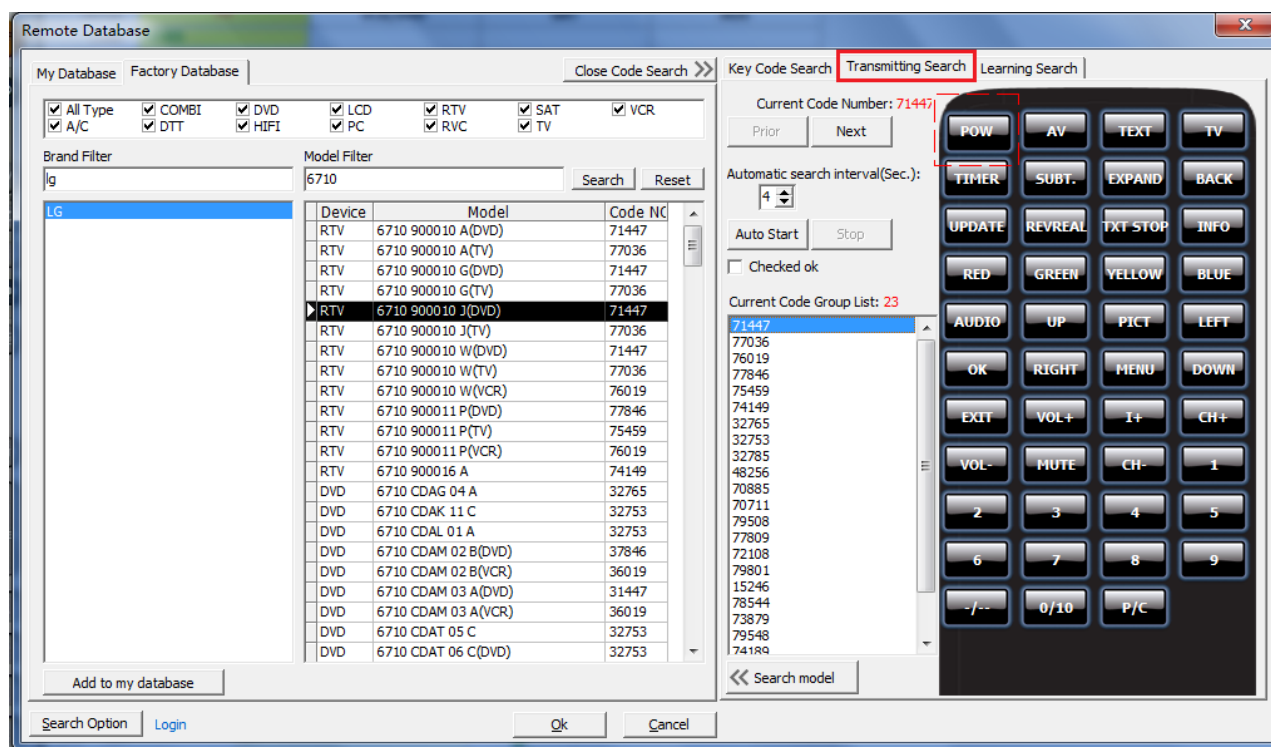


Fourth step: After finding the correct code by click to search key code, click "Search Model" to search brand and model which have same code number in "Current Code Group List".



2) Transmitting search

Search the code by transmitting key code in database from PC directly. See below photo.



First step: select the source remote control range. For example, enter "LG" brand and "6710" model key words. The result is listed. In the meantime, the code numbers of these remote control are listed in "Current Code Group List". The first code number of remote control key name is displayed in right remote control map.

Second step: Click one key name to select the key to transmit key code by USB remote control directly. Before transmitting, the device has to be prepared and power on. USB remote control has to be put toward the device. If the device can be controlled, try other keys. If the device isn't controlled, try next code number by clicking "Next" button or "Start" button to transmit IR codes automatically. When the device is controlled, click "Stop" button to stop the auto transmitting. (Setup the interval time between 2 codes, 4-9 seconds).

After finding one code number with the selected key name, select "Checked OK". Then select other key name to repeat this second step.

Third step: After finding the correct code key code, click "Search Model" to search brand and model which have same code number in "Current Code Group List".

3) Learning search

Search the code in database by learning. See below photo.

First step: select the source remote control range. For example, enter "LG" brand and "6710" model key words. The result is listed. In the meantime, the code numbers of these remote control are listed in "Current Code Group List". The first code number of remote control key name is displayed in left remote control map.

Second step: Click one key name to select the key to be matched or searched. Put the other remote control toward the USB remote control in direct line, leaving 2-10CM. Press the key of other remote control with the same key name as the remote control map. The learning search result is listed in "Current Code Group List". After one key learning search, repeat this second step to search other key.

Third step: After finding the correct code key code, click "Search Model" to search brand and model which have same code number in "Current Code Group List".

8, Some useful skills

1) Reset to factory setting

Fill in "test" in the brackets, then program to remote control.

2) Test if the programmed code into remote is correct.

In order to test if the remote is fine, please follow below instruction.

a) Reset to factory setting

b) Restart software and make sure the key table is blank.

c) Use "Code Learn"(Item 5) to learn each key code to key table.

d) Save to IR file. Refer to Item 5-5) output to PC hard disk. Name its file to be "Test-new.txt"

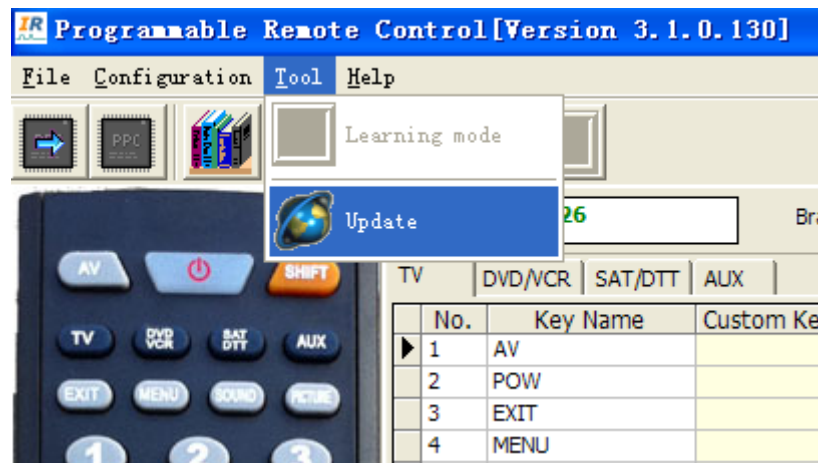
e) Identify (Read) the remote code, or save "Test" code into PC file, also name it to be "Test.txt".

f) open "text.txt" and "Text-new.txt", compare its content, check if the key codes inside is same.

(Note: Above is only an example. User can use other codes to test and compare. This method is either to test remote control, or to test the content inside the remote)

9, Others

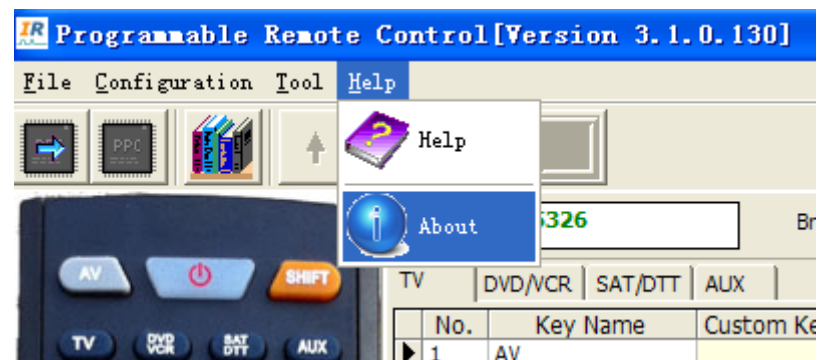
1) Updating



Updating database...

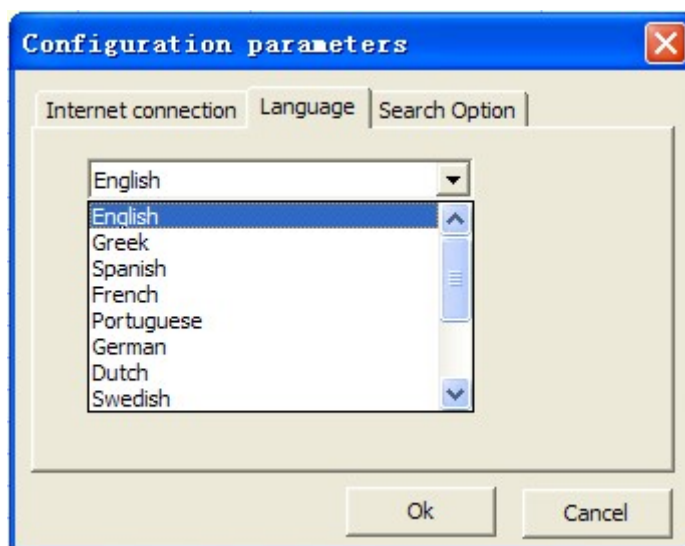
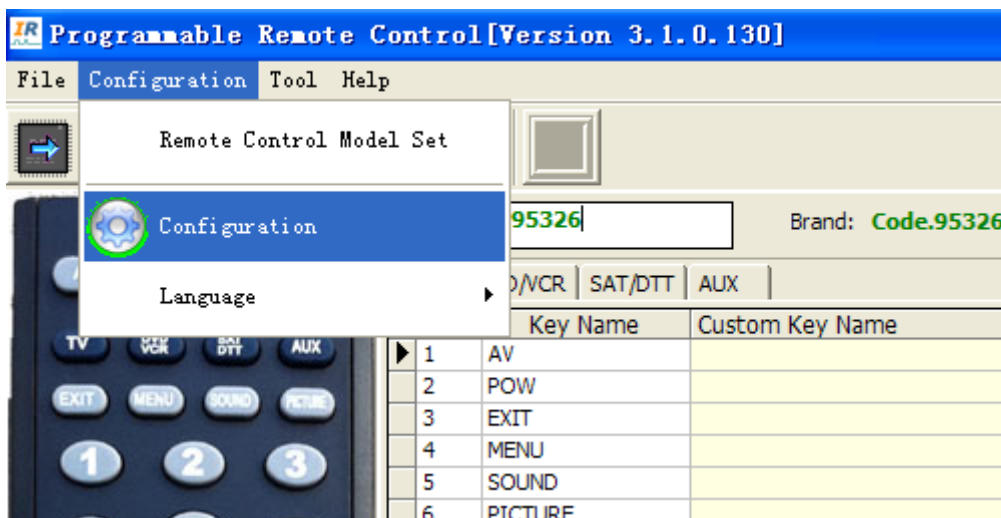


2) About



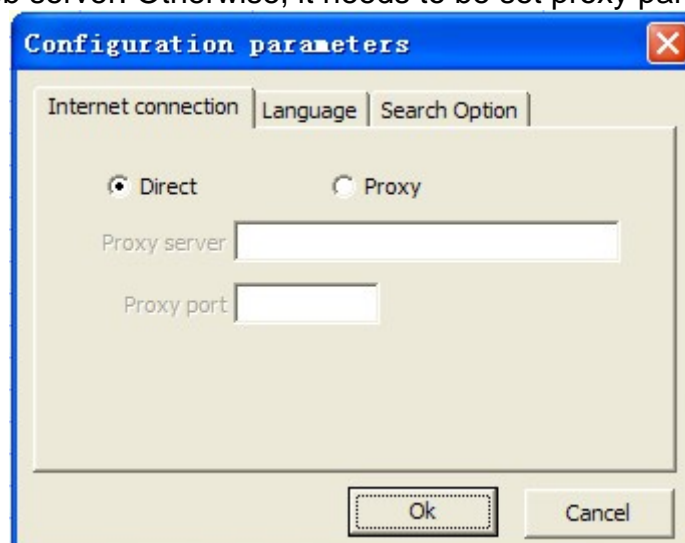
3) Language



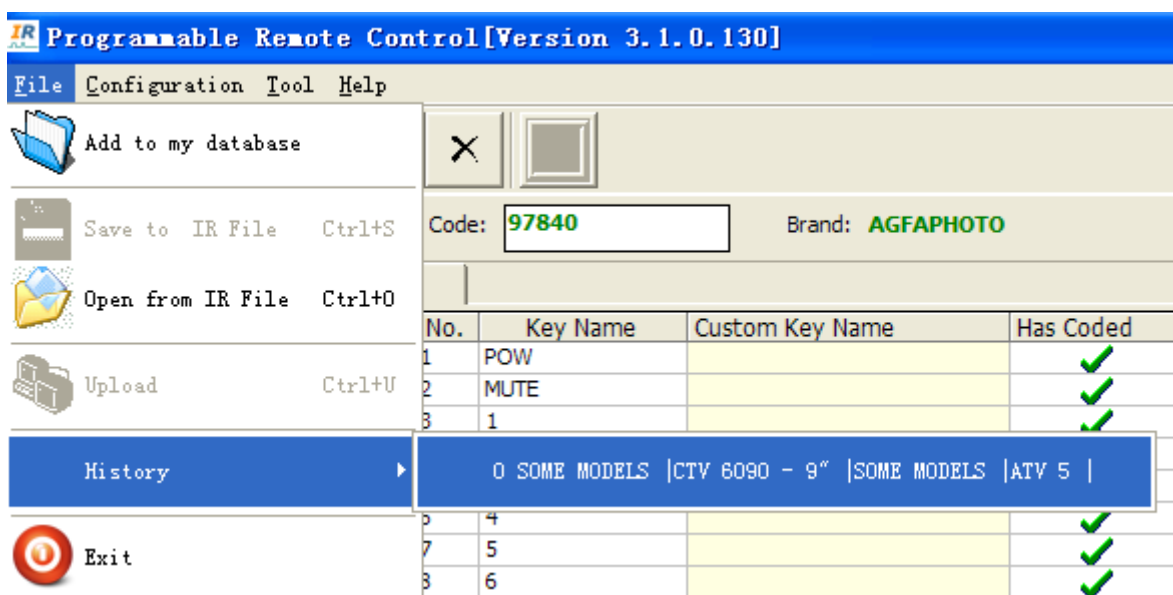


4) Internet proxy setting

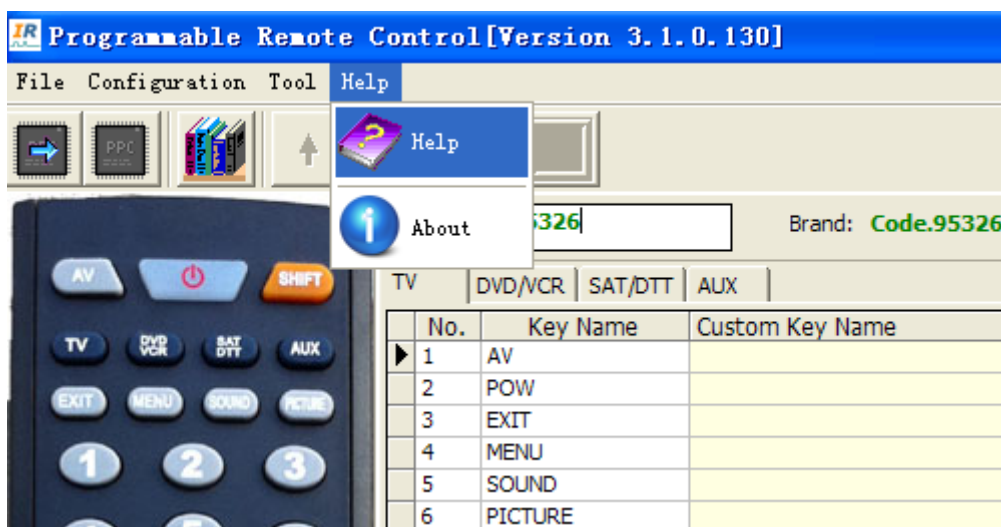
Only when updating, PC is needed to connect internet. If no proxy is set, it uses direct mode to connect web server. Otherwise, it needs to be set proxy parameter.



5) History



6) Help



10, FAQ

1) *How to test the remote control to be fine?*

Answer: Refer to item 8-2.

2) *Why doesn't the LED flash when pressing some keys?*

Answer: It is correct, because there is no key codes in some keys.

3) *Why can't USB remote control be identified by PC?*

Answer: When USB remote control is connected to PC, it's better to take the battery out of USB remote control. If USB remote control can be identified in the first time, but can't be identified by PC after unplugging and plugging again, please press the key for some times after unplugging the USB cable. Then connect USB remote control to PC again.

4) *How to get more support?*

Answer: Please contact your direct supplier.

5) *How to find more codes which is not included in database by yourself?*

Answer: There are many ways.

- a) Find a universal remote control, if you can find one code which can control your device, then you can learn it into PC software and adjust its key position.
- b) Find other PC programmable remote control, search it and learn it into "My database".
- c) If you know its brand and make, you can search it in website, www.clurc.net.